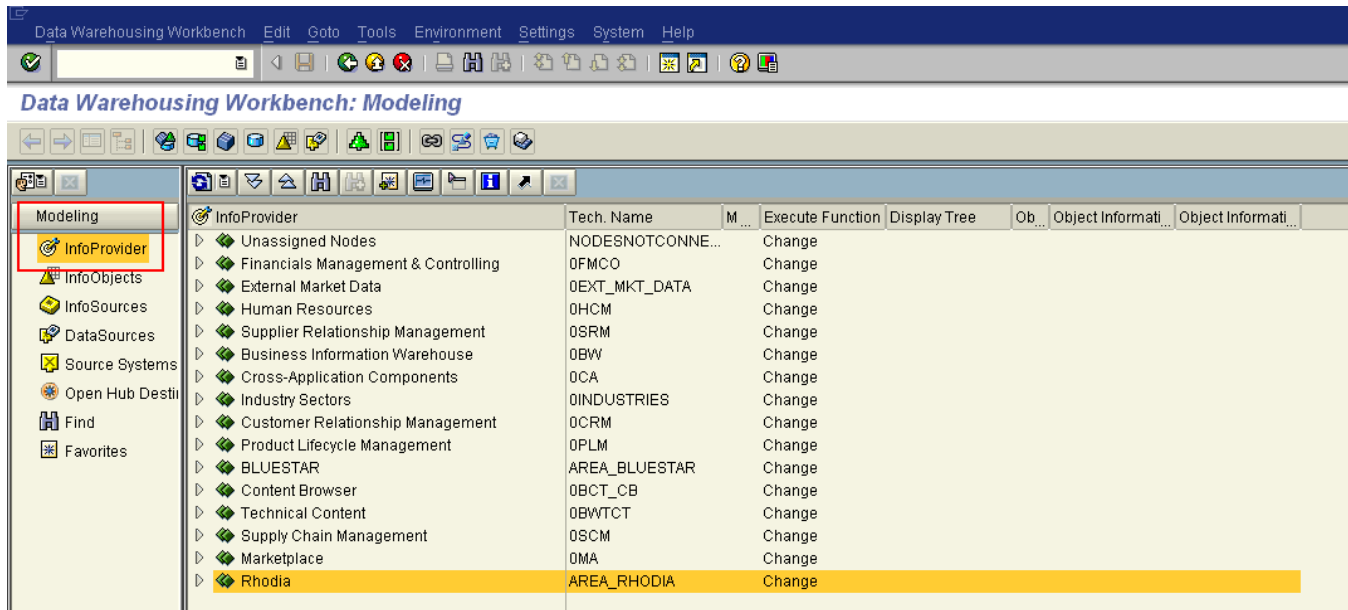


How to replicate and reactivate transfer rules

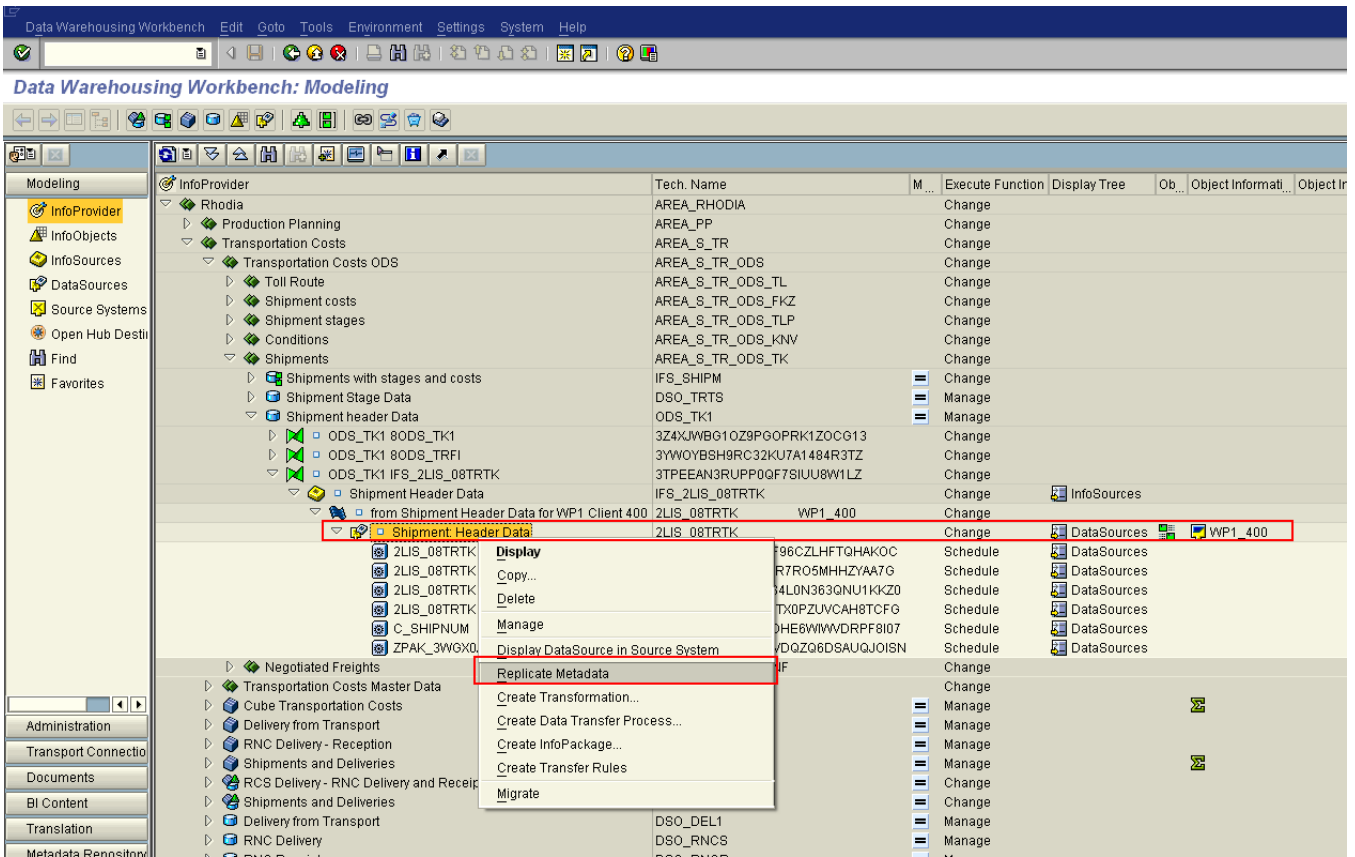
- [Instructions for BW 3.x datasource replication](#)
- [Instructions for BI7 datasource replication](#)

Instructions for BW 3.x datasource replication

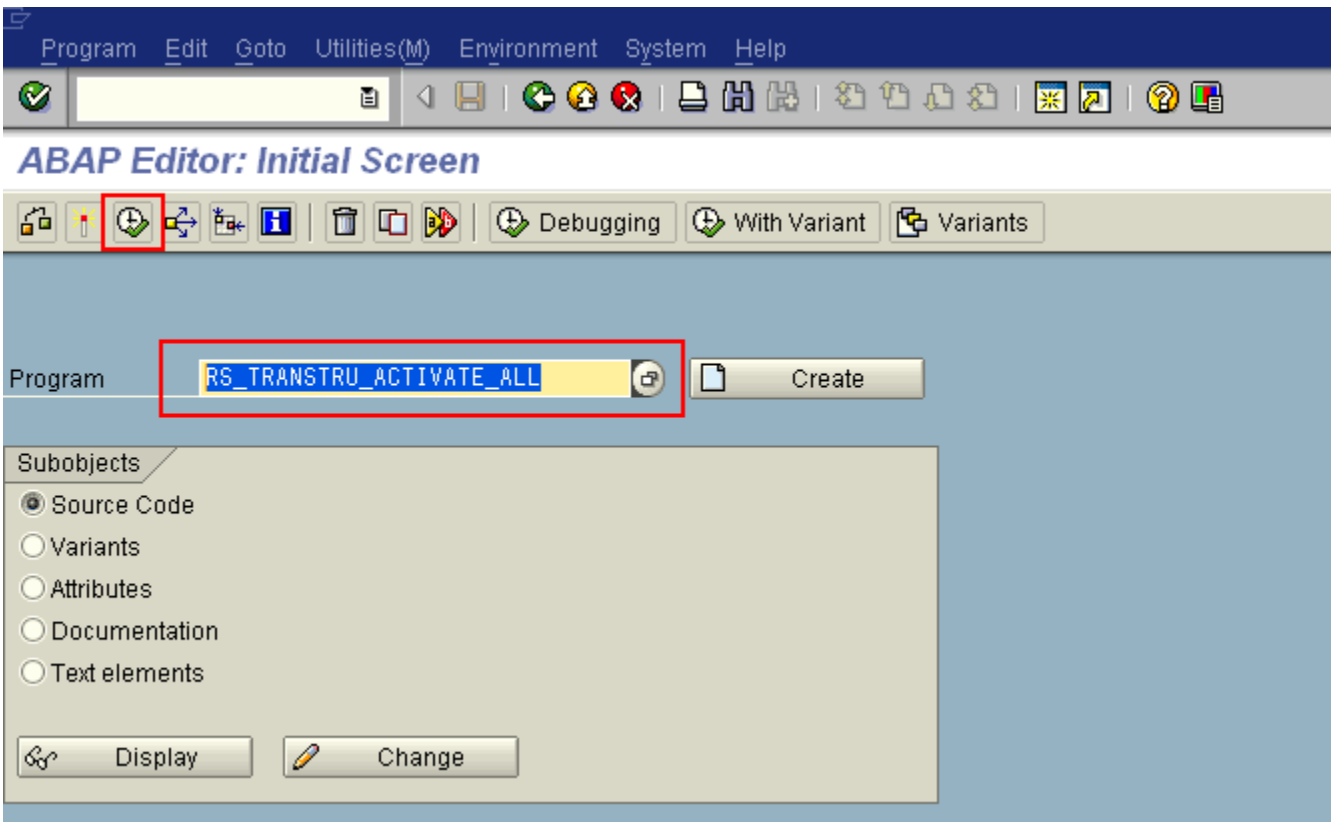
Go to RSA1 -> Modeling -> InfoProvider



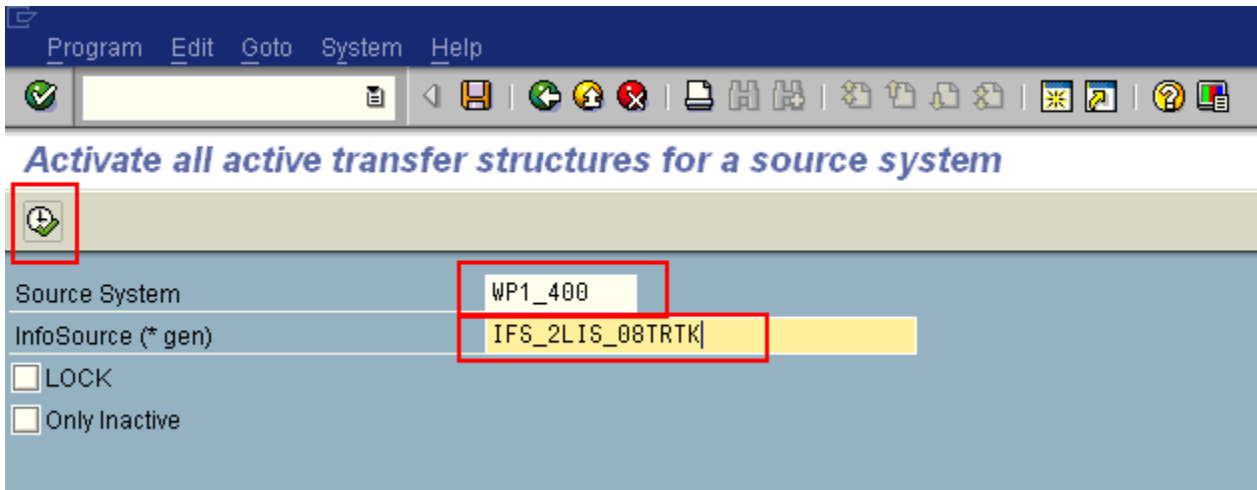
Right click on the datasource and select Replicate Metadata.



Go to transaction code SE38 and execute the program RS_TRANSTRU_ACTIVATE_ALL to activate the transfer structure.



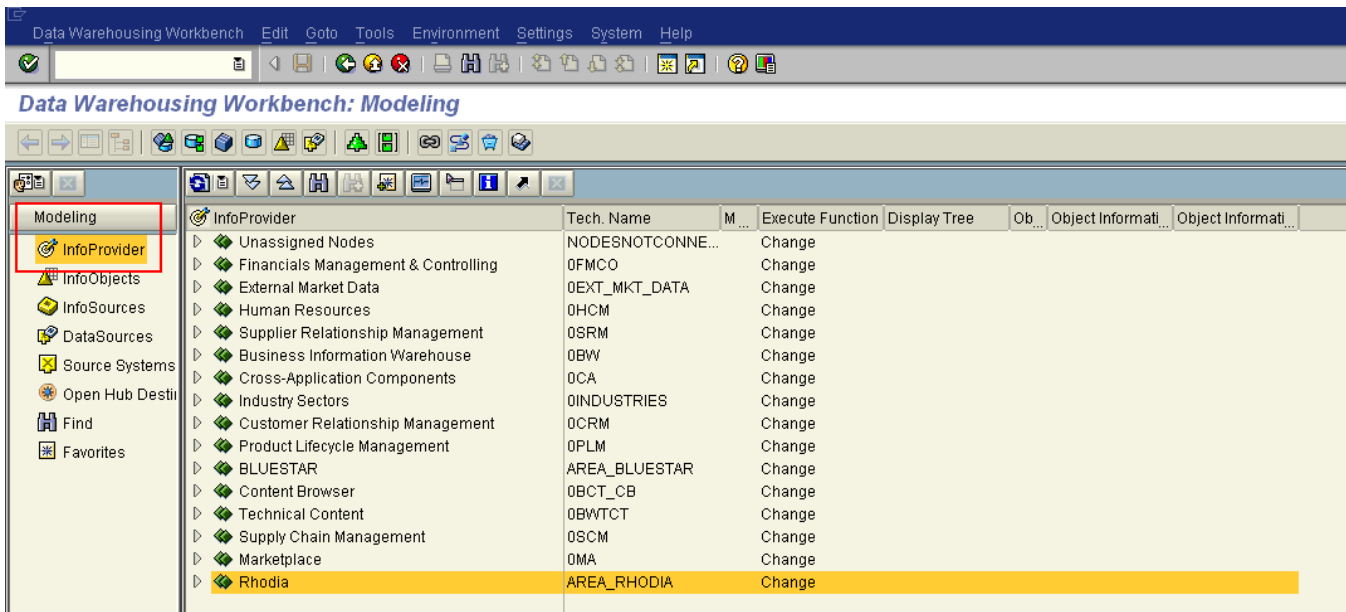
Input the technical names of the Source System and InfoSource that are related to the replicated datasources. Click execute to activate the info source.



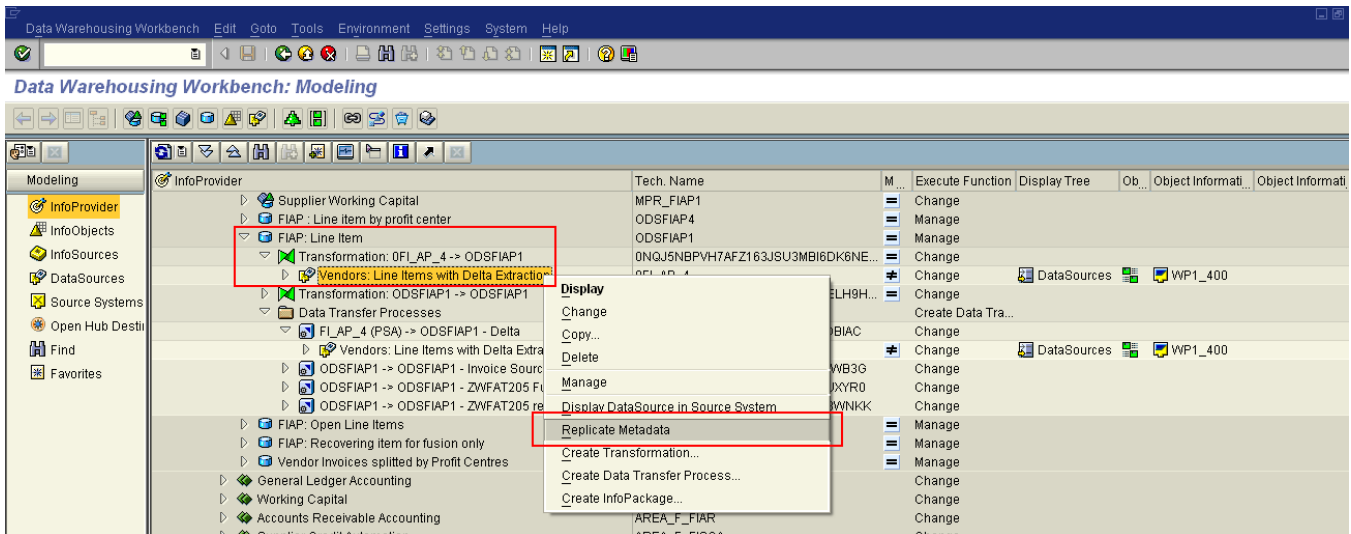
Proceed to repeat the loading in the process chain.

Instructions for BI7 datasource replication

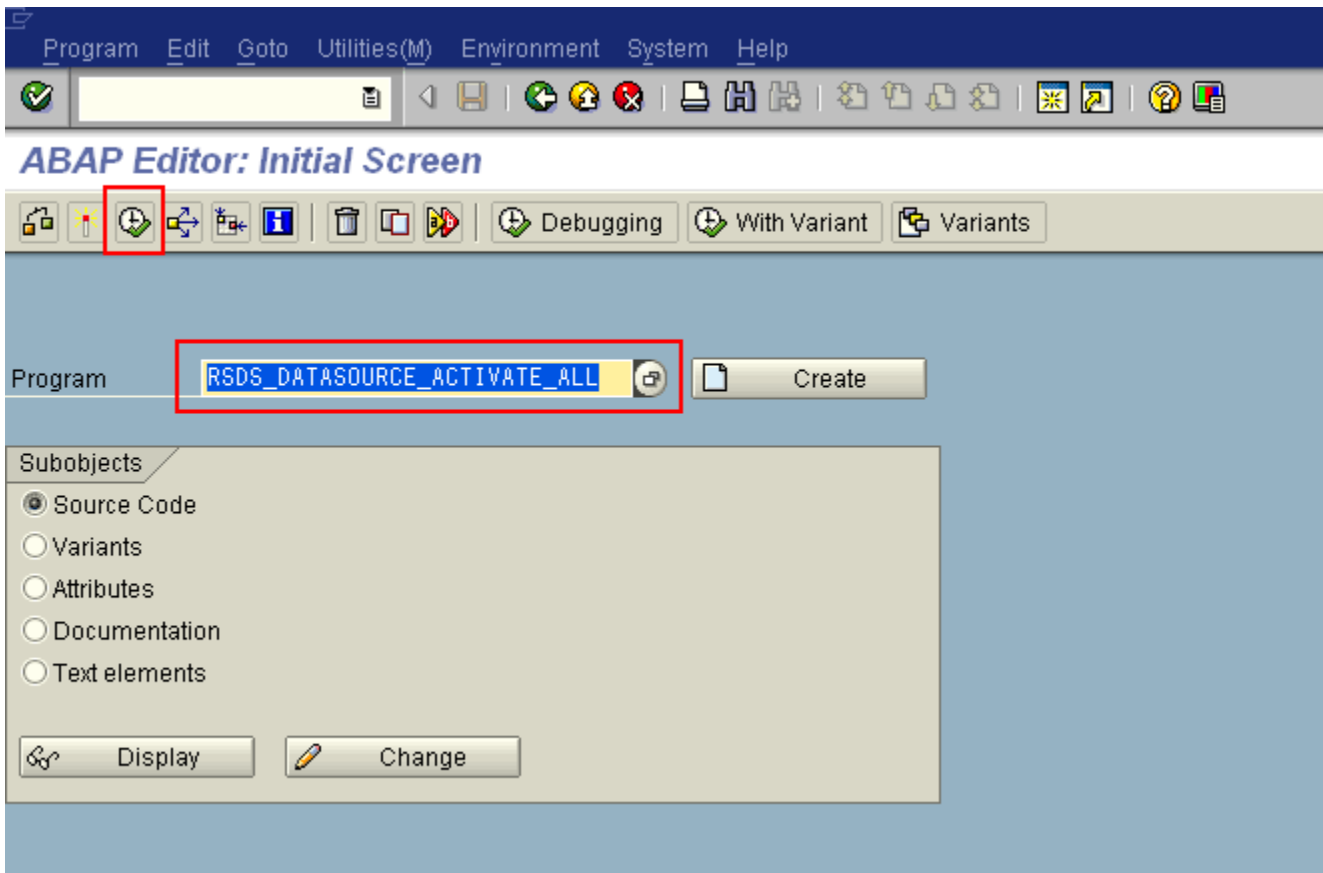
Go to RSA1 -> Modeling -> InfoProvider



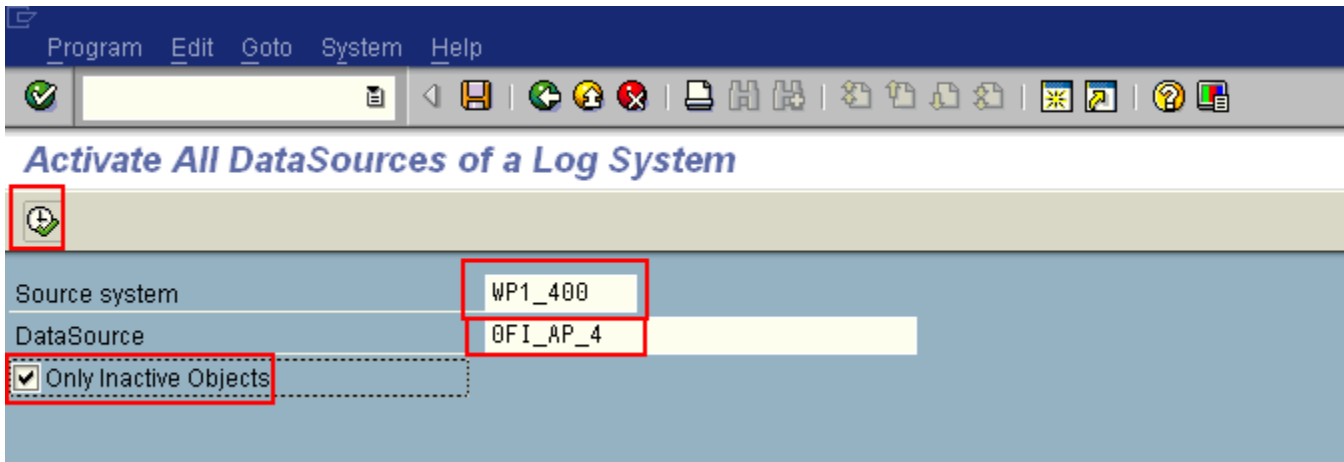
Right click on the DataSource and select Replicate Metadata.



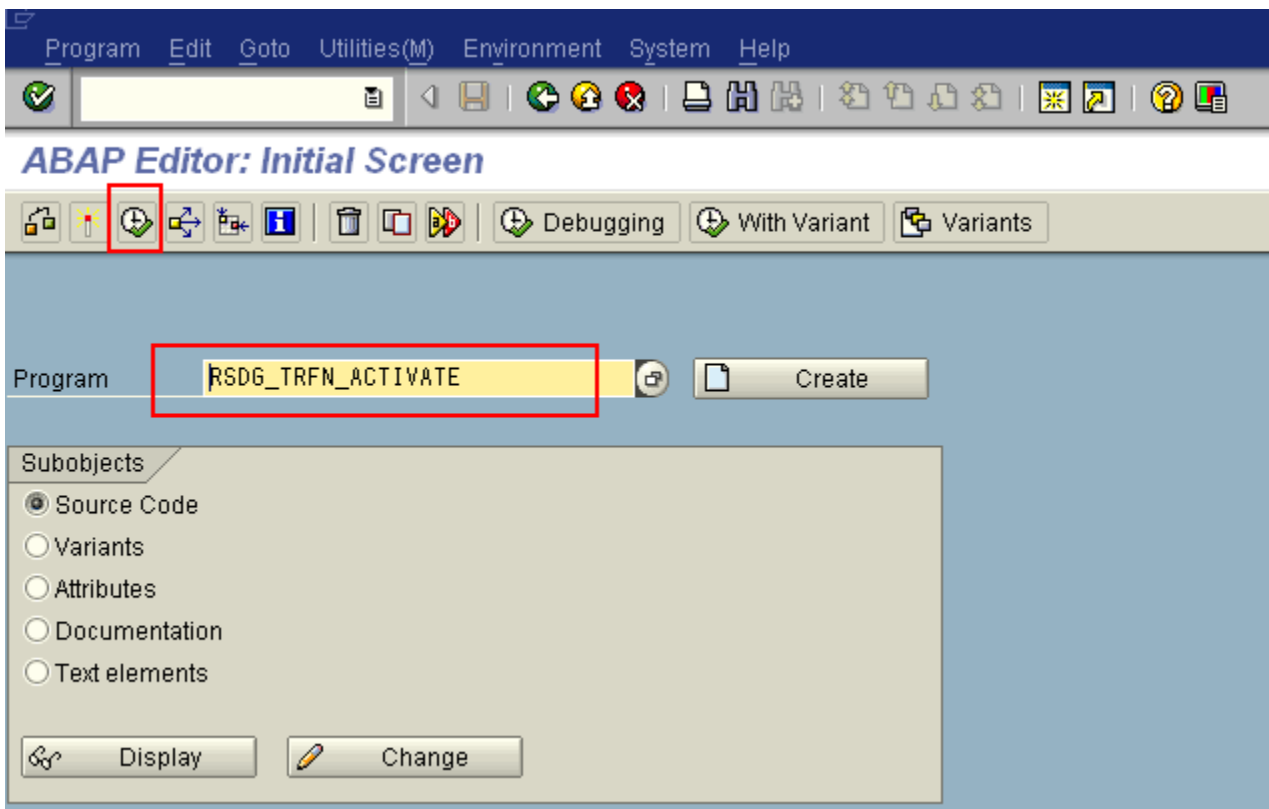
Go to transaction code SE38 and execute the program RSDS_DATASOURCE_ACTIVATE_ALL to activate the Datasource structure.



Input the technical names of the Source System and DataSource that was being replicated. Click execute to activate the datasource structure.



Go to transaction code SE38 and execute the program RSDG_TRFN_ACTIVATE to activate the Transformation related to the replicated DataSource.



Input the technical name (ID) of the Transformation that is related to the replicated datasource. Enter ACT in the OBJSTAT field. Click execute to activate the transformation structure.

Program Edit Goto System Help

Report RSDG_TRFN_ACTIVATE

⏱

TRAN_ID	0NQJ5NBPVH7AFZ163J:	to		➡
OBJSTAT	ACT			↻
SRC_TYPE		to		➡
SRC_NAME		to		➡
TRG_TYPE		to		➡
TRG_NAME		to		➡

Proceed to repeat the loading in the process chain.

\</content>\</wikidoc>