

zzz RAP

- [OVERVIEW](#)
- [DATABASE DIAGRAM](#)
- [BI4/Oracle CONNECTIONS](#)
- [BI4 UNIVERSE](#)
 - [RAP.UNX](#)
 - [Data Foundation \(PDF\)](#)
 - [Business Layer \(PDF\)](#)
- [BI4 REPORTS](#)
 - [BI4 core folder: 46 - RAP HSE \(Solvay Legacy\)](#)
- [Useful links](#)

09.2020 - BI4-RAP decomissionned

On Tue, Sep 8, 2020 at 6:15 PM DE-ZEEUW, Laurence <laurence.de-zeeuw@solvay.com> wrote:

Hello,

pour votre information, nous avons eu ce matin un réunion avec les utilisatrices de l'outil RAP.

Elle nous ont confirmé qu'elles valident le nouvel outil développé par Gilles dans QlikSense et que l'on peut supprimer dans BI4.

Gilles va donc transférer le dashboard en production (validation --> compliance), et de mon côté, je vais supprimer l'accès au QuickLoad et au répertoire BI4.

La doc utilisateur est accessible directement via le dashboard.



BI4 - RAP application) - SMILE campaigns Boîte de réception x



Nicot, Christine

À moi, Nathalie, Francesco, Jean-Hugues, HSE ▾

15:25 (il y a 6 minutes)



Dear Laurence,

PLEASE DO NOT DISABLE THIS APPLICATION as we continue to use it and this database/tool is very important to us. Only we are currently in the period of requests for samples and we wait for the analytical results coming from the external laboratories. When we got the results we will download all the results into the database and then we will may queries in order to write the annual reports.

SO PLEASE DO NOT CHANGE ANYTHING. **Without this database and this tool we will no longer be able to work.**

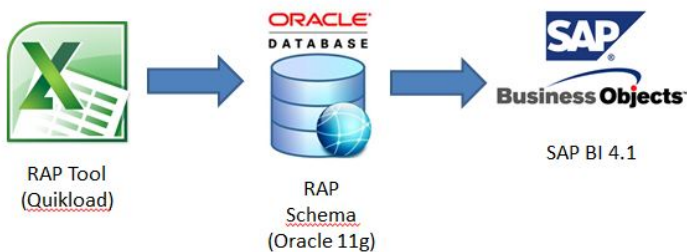
Thanks for your understanding !!!!

Kind regards,

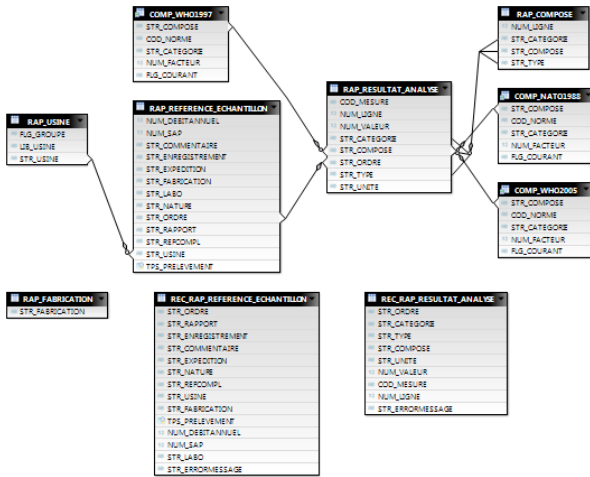
Christine

OVERVIEW

The RAP BI4 application deals with HSE dioxine rates control, by collecting result of analysis of samples (sludges, wastes, soils,etc) from external labs.



DATABASE DIAGRAM



The main fact table is RAP_RESULTAT_ANALYSE

BI4/Oracle CONNECTIONS

In Oracle, user **ICRDBA**

User / Schema:

Password:

TNS Direct LDAP

Database:

Oracle connections and users

General Information

Shortcut Name	RAP
Repository Server	@WDCBIAD01.eua.solvay.com:6400
Connection Name	RAP.cnx
Connection Type	Relational
Repository Folder	/46 RAP HSE (Solvay Legacy)

Oracle ODBC Driver Configuration

Data Source Name: RAP10P_ODBC
 Description: ODBC for RAP_APPLICATION (PROD UN7)
 TNS Service Name: ICP:WORLD
 User ID: RAP

Application: Oracle | Workarounds | SQLServer Migration

Enable Result Sets: Enable Query Timeout: Read-Only Connection:
 Enable Closing Cursors: Enable Thread Safety:

Batch Autocommit Mode: Commit only if all statements succeed
 Numeric Settings: Use Oracle NLS settings

Oracle ODBC Driver Configuration

Data Source Name: RAP10P_ODBC
 Description: ODBC for RAP_APPLICATION (DEV L04)
 TNS Service Name: ICP:WORLD
 User ID: RAP

Application: Oracle | Workarounds | SQLServer Migration

Enable Result Sets: Enable Query Timeout: Read-Only Connection:
 Enable Closing Cursors: Enable Thread Safety:

Batch Autocommit Mode: Commit only if all statements succeed
 Numeric Settings: Use Oracle NLS settings

Data Loading - RAP QUIKLOAD

QuikLoad XLS file is available here : [\\wdcbiaq01.eua.solvay.com](http://\wdcbiaq01.eua.solvay.com)

QuikLoad name : [RAP_Tool_Ex2010_V06.xlsm](#)

The loading process is done by using the RAP tool (with embedded version of QuikLoad) on the following table layouts:

TABLE_NAME	TABLE_COMM
QUIK_RAP_REFERENCE_ECHANTILLON	HSE RAP REFERENCE ECHANTILLON
QUIK_RAP_RESULTAT_ANALYSE	HSE RAP RESULTAT ANALYSE

The loading frequency is eventual (usually twice a month).

Link to RAP Tool

BI4 UNIVERSE

RAP.UNX

Data Foundation (PDF)

▲ Data Foundation	16
Alias Tables	0
Contexts	0
Derived Tables	3
Joins	6
Lists of Values	0
Parameters	0
Standard Tables	7
Tables	10
Views	0

Business Layer (PDF)




blocked URL

BI4 REPORTS

BI4 core folder: 46 - RAP HSE (Solvay Legacy)

Access restriction applied on the BI4 folder.

There are two core reports "Resultats d'analyses" and "Error_Data_Sample_Results" that contains a scheduled publication.

	Title ^	Type
	Errors_Data_Sample_Results	Publication
	Errors_Data_Sample_Results	Web Intelligence
	Resultats d'analyses	Web Intelligence





Useful links

[Link to UpToDate documentation of universes \(from 360 eyes\)](#)

[Link to Knowledge Transfer documents for RAP](#)

Workflow history

This view shows the 5 most recent entries. The complete workflow log is available from the 'Document Activity' menu item.

From May 20, 2016 to May 25, 2025	Actor	Type	Activity	Version
	Laurence De Zeeuw , Jose Alvaro De Jesus Monteiro and SWAMI-ext, Shivani Siddhrameshwar	Edit	multiple updates from  Laurence De Zeeuw ,  Jose Alvaro De Jesus Monteiro and  SWAMI-ext, Shivani Siddhrameshwar	
	 Jose Alvaro De Jesus Monteiro	Edit	created the page at 7:49 pm	