

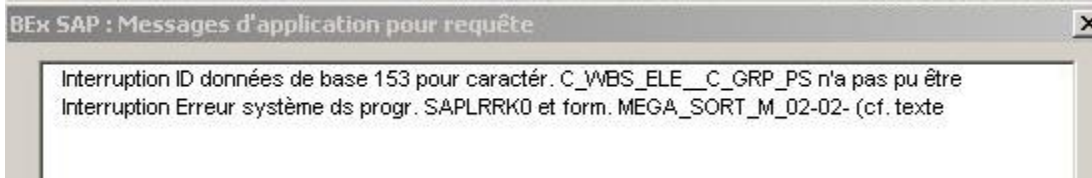
# How to flag a query to not use BIA

- [Business Scenario](#)
- [For all queries in one or more info-providers - Step by step procedure](#)
- [For a single query - Step by step procedure](#)

## Business Scenario

1. query that was working before the creation of the BWA (BW Accelerator) on the source infocube no longer works after the index creation and displays an error message relevant to the BWA.

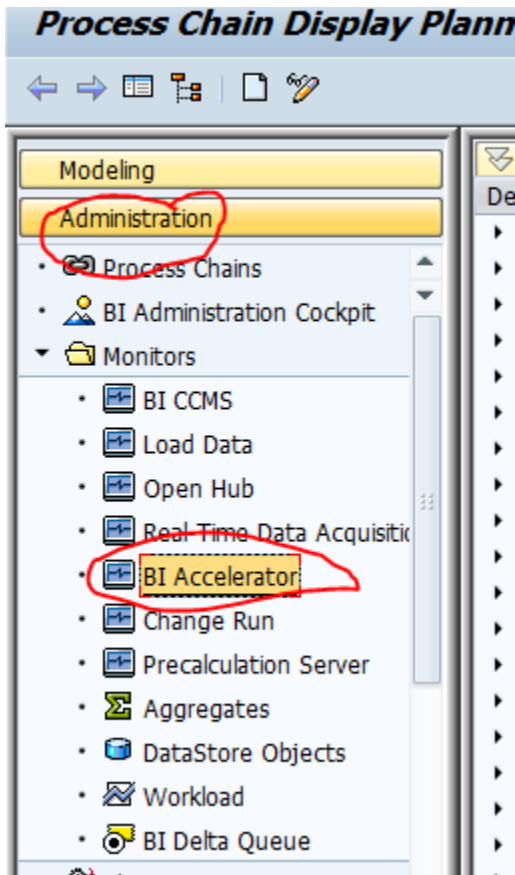
Examples of error messages :



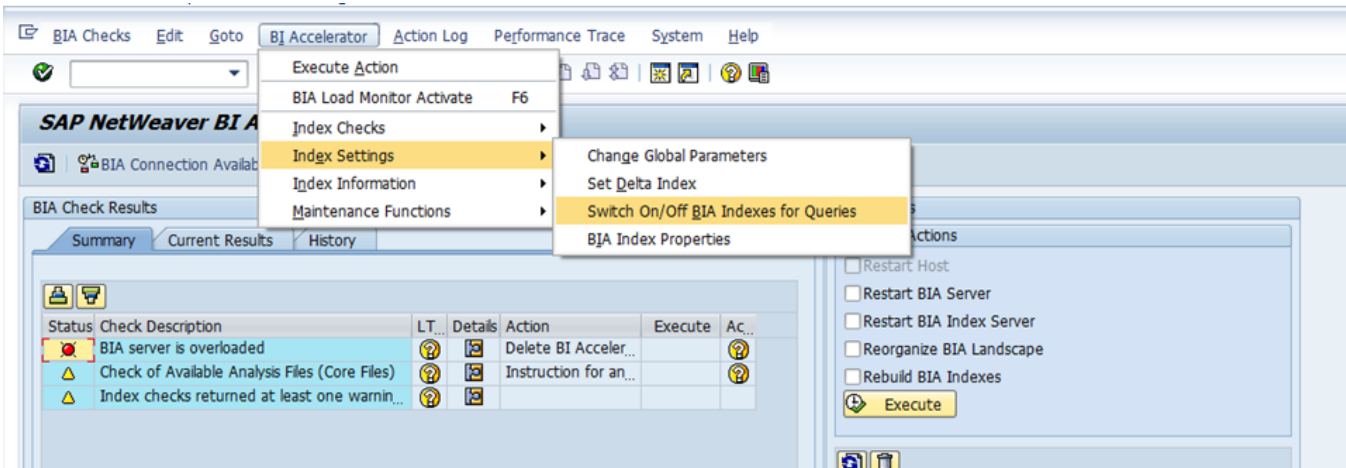
If no other solution is found a short term solution is to flag the query so that it will no longer use the BWA.

## For all queries in one or more info-providers - Step by step procedure

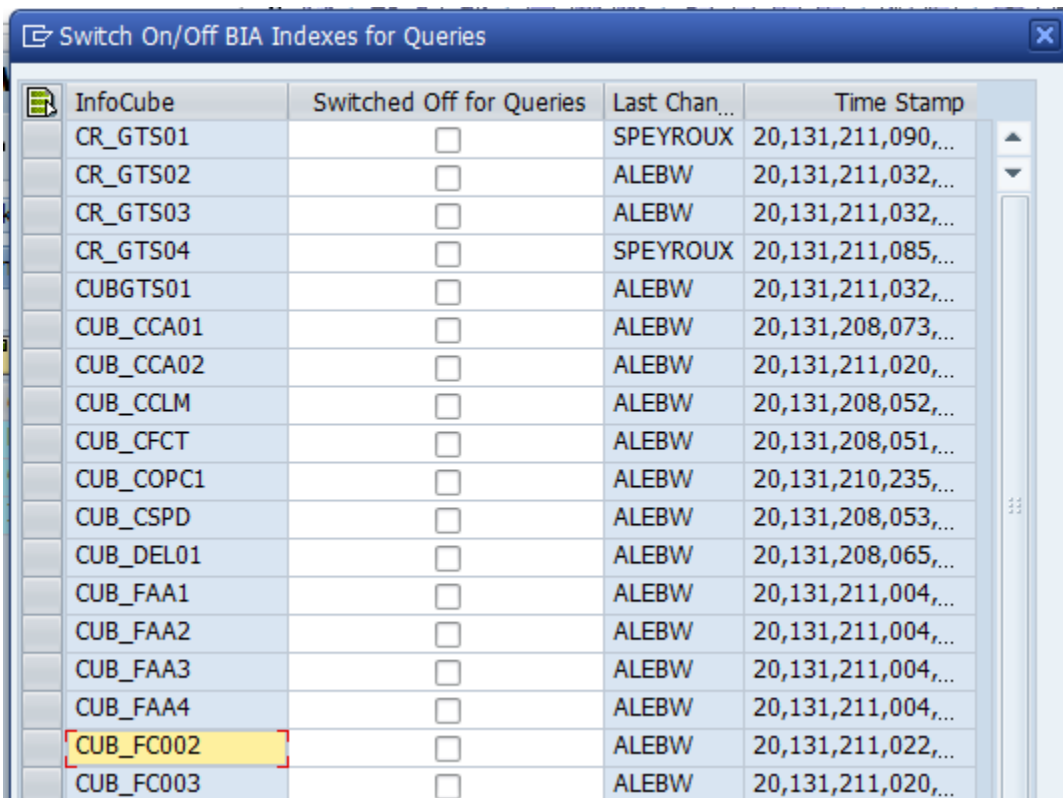
1. - In RSA1, go under Administration -> Monitors -> BI Accelerator




- 2 - From the menu bar, choose the following :



3 - Then check the infoproviders for which you don't want the queries to use BIA :



## For a single query - Step by step procedure

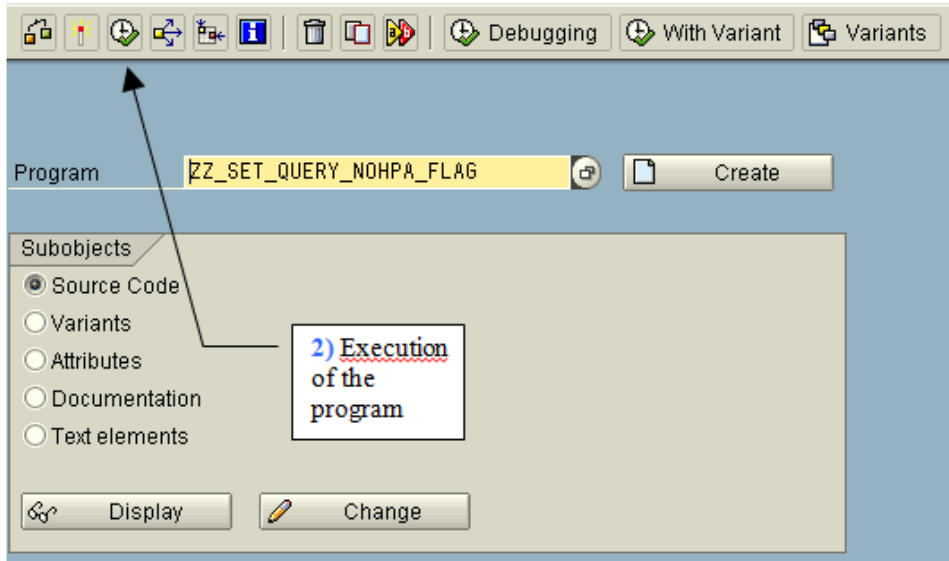
 All queries flagged to not use the BIA must be logged into the Eroom file : [https://teamspace2.rhodiacenter.com/eRoom/InformationSystems/APM-TechnoStream/0\\_aa698](https://teamspace2.rhodiacenter.com/eRoom/InformationSystems/APM-TechnoStream/0_aa698)

Solution were found on SAP NOTE 1161525 and applied to WBD/WBQ/WBP.

1. Log into BW and run transaction SE38

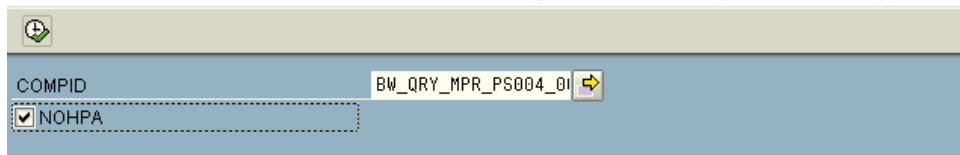
2. Select program "ZZ\_SET\_QUERY\_NOHPA\_FLAG" and click on "Execute" icon.

### ABAP Editor: Initial Screen



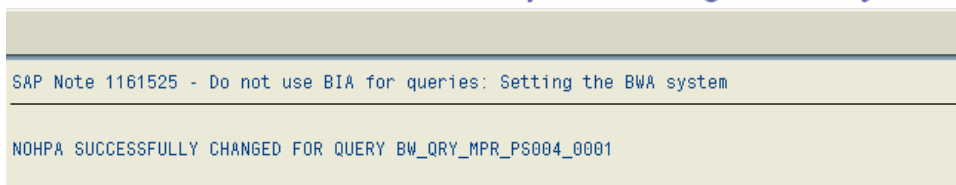
3. Enter the query technical name in the "COMPID" field.

### SAP Note 1161525 - Do not use BIA for queries: Setting the BWA system



4. Check the NOHPA box.

### SAP Note 1161525 - Do not use BIA for queries: Setting the BWA system



5. Execute.
6. Go to the [Eroom log file](#) and add the query that you flagged

To remove the flag, same process, just leave the NOHPA box unchecked.