

BW - Text extractions

- General presentation
 - Objective of the application
 - Dataflow overview

General presentation

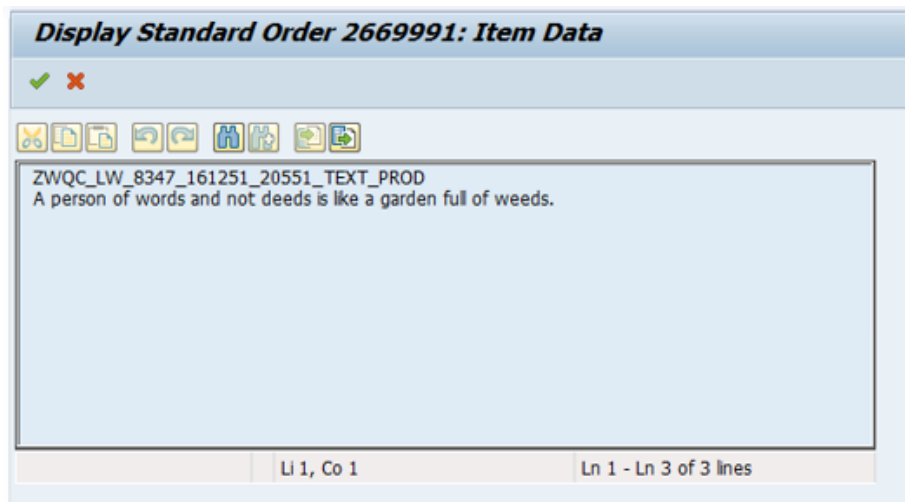
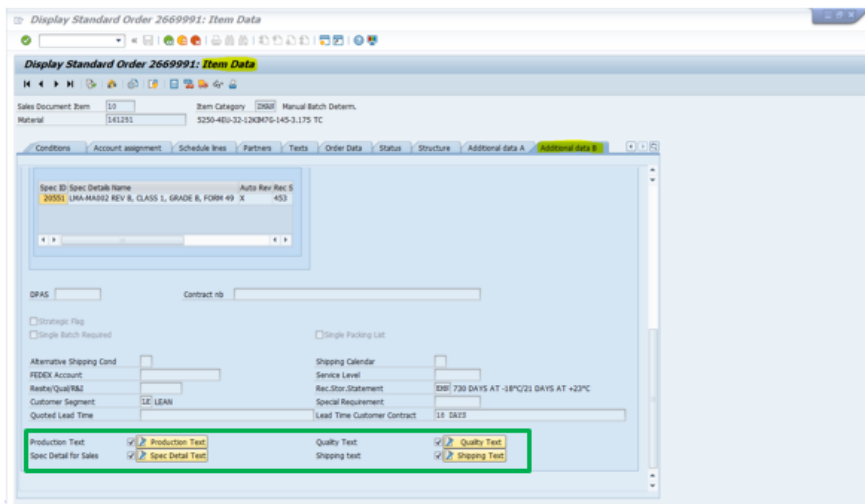
Objective of the application

BW Text extractions.

Tool Leader + IT leader of the application: Craig Wanamaker + Diogo Paiva

Dataflow overview

Aero Specific Text fields for the Sales Order Item location:



New extractor "DTS_BW_AERO_VBAP - Aero Additional B" created to extract the Aero Specific Text data from the Sales Order Item in the Additional Data B tab:

Sales and Distribution	SD
Sales Master Data	SD-IO
Billing Doc. Header Data	2LIS_13_VDHDR
Customer	2LIS_01_S001
Delivery Header Data	2LIS_12_VCHDR
SD- Quotation	2LIS_01_S264
Sales Document Header Status	2LIS_11_VASTH
Sales-Shipping Allocation Item Data	2LIS_11_V_ITM
Sales-Shipping Allocation Schedule	2LIS_11_V_SCL
Sales-Shipping Schedule Line Delivery	2LIS_12_VCSCL
Shipment Costs at Item Level	2LIS_08TRFKP
Shipping point	2LIS_01_S005
Aero Additional B	DTS_BW_AERO_VBAP

Fields regarding this development:

Display DataSource DTS_BW_AERO_VBAP(EF2_400)

DataSource: DTS_BW_AERO_VBAP Aero Additional B
Source System: EF2_400 EF2 Client 400
Version: Active Compare with...
Active Version: Executable Edited Version

General Info. Extraction Fields

Pos.	Field	Descript.	D...	T...	Data type	Length	Decl...	Exter...	C...	K...	Con...	Format	SS ...	cur/unit	S...	SeL Opts	Field Type
21	ZZ_QUOT_LEADTIME	Quoted Lea...			CHAR	200	0	0				Inter...				0	
22	ZZ_CUST_LEADTIME	Lead Time C...			CHAR	200	0	0				Inter...				0	
23	ZZ_SALES_PLANNING_TEXT				CHAR	300	0	0				Inter...				0	
24	ZZ_PRODUCTION_TEXT				CHAR	300	0	0				Inter...				0	
25	ZZ_QUALITY_TEXT				CHAR	300	0	0				Inter...				0	
26	ZZ_SHIPPING_TEXT				CHAR	300	0	0				Inter...				0	
27	ZZ_SPEC_DETAIL				CHAR	300	0	0				Inter...				0	

The data extracted will be stored in the DSO "DPSDSO56 - Sales Document Header/Item Data Active docs (Rhodia)" and then loaded to the attributes from the characteristic "C_ITM_SD - Sales document item":

Sales document item	C_ITM_SD
Sales document item (Attributes)	ATTRIBUTES_C_ITM_SD
TRSF: C_ITM_SD -> C_ITM_SD	0603DNRTIA7XQOY1X16Q3QPBT5T8090J
TRSF: DBSDSO08 -> C_ITM_SD (Solva)	0D1HERWVYTSDJGDCXP33T3LDU281LG2
TRSF: DBSDSO11 -> C_ITM_SD (Solva)	069EFS TLXGD2PAVZRE72KXZ29FIQB4JL
TRSF: DBSDSO12 -> C_ITM_SD (Solva)	0IPDIPCL7W0F35TK4SZYJ728GTNQ4FOV
TRSF: DBSDSO48 -> C_ITM_SD (Rhodia)	0MN6T684F2W3JOT7YRUXC6NE3P91DXK
TRSF: DBSDSO51 -> C_ITM_SD (Rhodia)	040FUJ68T6VFQGR3WMU965R5GVPFEK0L
TRSF: DBSDSO52 -> C_ITM_SD (Rhodia)	0DAKHEIHV1YNUPGN2R2Z57YE7L9ZKGHK
TRSF: DPSDSO16 -> C_ITM_SD (Solva)	04TA3ZE004CGL4YUJK3H21FRNK5LF58M
TRSF: DPSDSO56 -> C_ITM_SD (Rhodia)	0MTTPDYBUBR4WAUHSXHRN0I0NDGOGAH7
Sales Document Header/Item Data Active docs (Rhodia)	DPSDSO56
RSDS DTS_BW_AERO_VBAP EF2_400 -> ODSO DPSDSO56	03EBWRU6HE0QJCW0580S5W1K4TFSQT8S3
TRSF: DTS_BW_VBAK_VBAP -> DPSDSO56 (Rhodia)	0MKJNSNT7XQCQECKOUZ7L81C3JNESAI3
Data Transfer Processes	DPSDSO56
DTP: DTS_BW_AERO_VBAP / WD1_110 -> DPSDSO56 (Rhodia)	DTP_B1FNY5NDTMCTE05GYAM9Z3RQ
DTP: DTS_BW_VBAK_VBAP -> DPSDSO56 - Delta (Rhodia)	DTP_AKL1L2RFQC0VNN0Q747MJKLB
DTP: DTS_BW_VBAK_VBAP -> DPSDSO56 - delta (Rhodia)	DTP_AKL1L2RFQC0SPHY30UWESDGI

The data is also loaded from "C_ITM_SD - Sales document item" to "C_ITM_GS - Order Line (SO+PO)":

Order Line (SO+PO)	C_ITM_GS
Order Line (SO+PO) (Attributes)	ATTRIBUTES_C_ITM_GS
ADSO APSDSO38 -> IOBJ C_ITM_GS (Rhodia)	0C5S3PW6R3B4FIH6GVD35RUK4V6FTVOO
ADSO APSDSO78 -> IOBJ C_ITM_GS (Solva)	05EUHF8YVOEXTAOAV70BRES5LUT29Q1H
TRSF: DBSDSO70 -> C_ITM_GS (Rhodia)	02RN5MIMU6PDGJGJTD YMJ84IBUWH8160
TRSF: C_ITM_SD -> C_ITM_GS (Solva&Rhodia)	0NRV8ESN06W3PV4UC3F1PB4WCJ1H3JCV

Once data is available in those InfoObjects, they could be retrieved in all the OTC reports through attributes exhibition:

The screenshot shows the SAP Analysis tool interface. On the left, a data table is displayed with columns for Order Line, Sales/Planning Text, Shipping Text, Quality Text, Production Text, and Spec. Detail For Sale. The table contains data for Order Lines 4 through 8. On the right, the 'Data Sources' pane is open, listing various data sources such as [C_ORREK] Reason for order, [C_PLUG] Pallet Surcharge Pkg, [C_PLUGST] Planning Order Status, [C_PNMETH] Payment Method, [C_PNTRSH] Payment Term (PMO), [C_PNTR] Production Term, [C_PL_STS] Process Status, [C_OTRT] Quoted Lead Time, [C_QMNT] Quality Text, [C_READLY] Reason for delay, [C_READRE] Reason for rejection, [C_READRT] Reason Statement, [C_RQZ] Reason/QualRME, [C_SBPQL] Single Batch Require, [C_SDCATE] Del. Cating (PMO), [C_SBRWAP] Created by (G_Order), [C_SHPDZ] Shipping conditions (para), [C_SHPCAL] Shipping Calendar, [C_SHP] Shipping Text, [C_SPCDT] Spec. Detail For Sale, [C_SPCPL] Single Packing List, [C_SPECEM] Main Specification, [C_SPECL] Specification List, [C_SPLANT] Sales/Planning Text, [C_SPLANT] Service Level, [C_STRPLNG] Strategic Flag, [SBOC_NAME] Order Number, [C_MARW2_C_PACKAG] Packaging type, [C_PAYER] Payer, [C_SPL_ZONE] Planning Zone, [C_SPLANT] Plant, and [C_MARW2_C_PACKAG] Packaging type.

Extractor "DTS_BW_AERO_VBAP - Aero Additional B" is based on a custom function module:

The screenshot shows the configuration screen for the data source 'DTS_BW_AERO_VBAP'. The screen is titled 'Display DataSource for Trans. Data: DTS_BW_AERO_VBAP' and includes a 'Generic Delta' icon. The configuration fields are as follows:

- DataSource:** DTS_BW_AERO_VBAP
- Applic. Component:** SD
- Data Reconciliation:**
- Object Status:** Saved
- Texts:**
 - Short description: Aero Additional B
 - Medium description: Aero Additional B
 - Long description: Aero Additional B
- Extraction from DB View:**
 - View/Table: [Empty field]
 - ExtractStruct.: [Empty field]
- Extraction from SAP Query:**
 - InfoSet: [Empty field]
- Extraction by Function Module:**
 - Function Module: ZFM_BW_AERO_VBAP
 - Extract.Struct.: ZSTR_BW_AERO_VBAP

The long texts fields were stored in ECC as TEXT IDs and then we used the READ_TEXT function to retrieve its values for the extractor:

```
Function Builder: Display ZFM_BW_AERO_VBAP
Function module: ZFM_BW_AERO_VBAP Active
Attributes Import Export Changing Tables Exceptions Source code

178 REFRESH it_line.
179
180 " Sales/Planning Text
181 CALL FUNCTION 'ZFM_BW_AERO_VBAP'
182 EXPORTING
183   client      = sy-mandt
184   id          = '000001'
185   language   = 'E'
186   name       = 'v_order_line'
187   object     = 'VSBP'
188   archive_handle = 0
189   local_cat  = ''
190 TABLES
191   lines      = it_line
192 EXCEPTIONS
193   id        = 1
194   language = 2
195   name     = 3
196   not_found = 4
197   object   = 5
198   reference_check = 6
199   wrong_access_to_archive = 7
200   OTHERS   = 8.
201
202 LOOP AT it_line INTO wa_line.
203   CONCATENATE v_sales_planning_text ' ' wa_line-tdline INTO v_sales_planning_text.
204 ENDOLOOP.
205
206 REFRESH it_line.
```

Reporting documentation drive folder:

<https://drive.google.com/drive/u/0/folders/1-7jbV-hDDyd8BqUFk6MJgHXvzfiLyCo0>