

# Reloading data when Keyfigures missing in BW\_QRY\_MVFICX01\_0021 !\ Obsolete !\



The new wiki link for this data flow is here:

Reloading data when Keyfigures missing in BW\_QRY\_MVFICX01\_0021

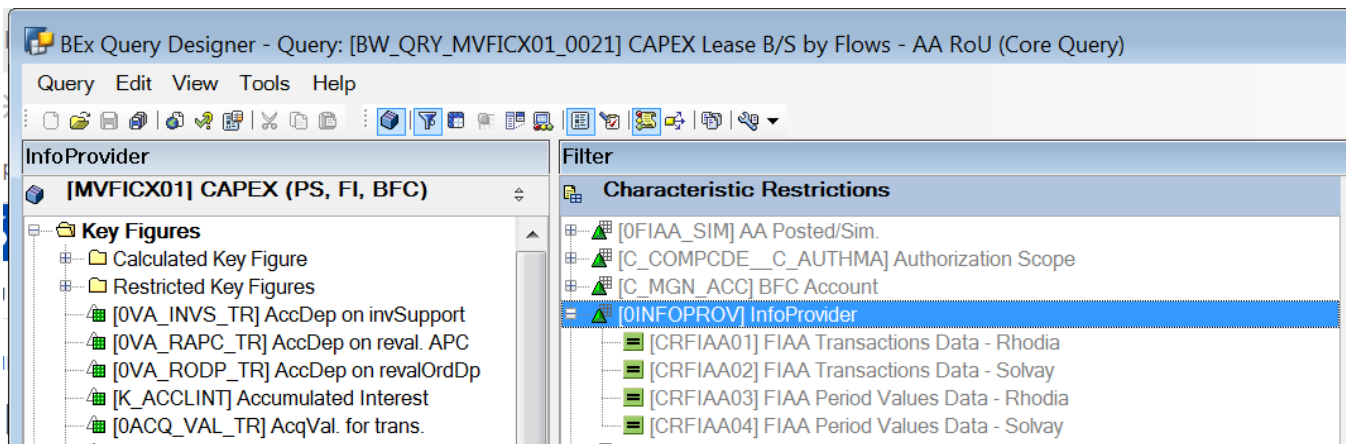
Please update the new doc there and no longer here.



## Importance of the query - BW\_QRY\_MVFICX01\_0021

The query - BW\_QRY\_MVFICX01\_0021 is used by users to deliver information to the auditors and it is very critical to solve any issues related to the query especially during closing period.

## Infoproviders used in the query:



## Know issue when DTP filter is incorrect

When we have any issues like missing keyfigures due to incorrect DTP filters, the affected infoproviders are to be reloaded.

Refer ticket - <https://sbs-support.solvay.com/a/tickets/5068132>

We had missing data for Nov and Dec 2020 due to an incorrect DTP filter sent to WBP:

DTP - DTP: APFIAA04(Solvay) -> ABFIAA04 - Delta (DTP\_B1FNYSNDTMCV57WV0IJ330CZX)

blocked URL

## Correction steps

Since the DTP filters are incorrect between propagation layer and business layer, the business layer and reporting layer has to be dropped and reloaded for the impacted data.

For example if the DTP was loaded with wrong filters since November 2020 all the data greater than October 2020 has to be reloaded, we reload October 2020 data as well to make sure there are no missing data.

Below are steps made for ticket - 5068132 , following steps can be taken as a reference to solve the issue

Step - 1 : Delete impacted data from Business layer, ABFIAA04 (where FISCPER is greater than or equal to 010.2020)

Job Log Entries for BI\_ADSOD5OKKM696NTTXU8B900IMN12K / 17252100

Job log Edit System Help

Job log overview for job: BI\_ADSOD5OKKM696NTTXU8B900IMN12K / 17252100

Date	Time	Message text
11.01.2021	17:25:21	Job started
11.01.2021	17:25:21	Step 001 started (program ODQ_TASK, variant &0000000004792, user ID FF_BWDEV9_T2)
11.01.2021	17:25:24	SQL: 11.01.2021 17:25:24 FF_BWDEV9_T2
11.01.2021	17:25:24	DELETE FROM "/BIC/AABFIAA042" "A" WHERE (
11.01.2021	17:25:24	"A"."FISCPER" >= '2020010'
11.01.2021	17:25:24	SQL-END: 11.01.2021 17:25:24 00:00:00
11.01.2021	17:25:24	SQL: 11.01.2021 17:25:24 FF_BWDEV9_T2
11.01.2021	17:25:24	LOCK TABLE "RSDRDLOGHEADER" IN EXCLUSIVE MOD
11.01.2021	17:25:24	SQL-END: 11.01.2021 17:25:24 00:00:00
11.01.2021	17:25:25	Delete records from DataStore table /BIC/AABFIAA042
11.01.2021	17:25:25	3.3767000000000000E+04 data records deleted from DataStore table /BIC/AABFIAA042
11.01.2021	17:25:25	Job finished

Step 2 : Verify if the impacted data is deleted in Business layer

Step 3 : Reload the impacted data from Propagation layer to Business layer using full DTP and filters should match with the selections used for deletion of data in Business layer:

Monitor: Data Transfer Process {2021-01-11 17:27:40 000008 CET}

Request Edit Goto Extras Environment System Help

Request ID {2021-01-11 17:27:40 000008 CET}

Start Time 11.01.2021 17:27:40

Finish Time 11.01.2021 17:28:25

Header Details

Overall Status ○○○

Runtime 45s

Source APFIAA04 (FIAA: Period Values - Solvay)

Transformation ADSO APFIAA04 -> ADSO ABFIAA04 ( 04LVTXG2I9HPBHB27I480JB8ND..

Target ABFIAA04 (FIAA: Period Values - Solvay Level 2)

Selections /BIC/C MGN ACC CP A23\* ; FISCPER >= 2020010 ; All Data from..

Request Template DTP\_4NDDUZTVR8LBN4UV20PPB4NNF (WBP: APFIAA04 -> ABFIAA04: Re

User FF\_BWDEV9\_T2

Extraction Mode Full

Package Size 50.000

Error Handling Cancel Request, Track First Incorrect Record, No Update

Processing Mode Serial Extraction, Immediate Parallel Processing

Data Records Inserted 34.007

Request ID DTPR\_20210111162740000008000

Step 4 - Activate the request reloaded in Step -3

Step 5 - Delete the impacted data from Reporting layer:

Job Log Entries for BI\_INDX5OJKMYET6JB3LHDASZ65P669R / 17303200

Job log Edit System Help

Long text Previous Page Next page

Job log overview for job: BI\_INDX5OJKMYET6JB3LHDASZ65P669R / 17303200

Date	Time	Message text
11.01.2021	17:30:32	Job started
11.01.2021	17:30:32	Step 001 started (program RSINDEX1, variant &0000000005041, user ID FF_BWDEV9_T2)
11.01.2021	17:30:35	SQL: 11.01.2021 17:30:35 FF_BWDEV9_T2
11.01.2021	17:30:35	DELETE FROM "/BIC/FCRFIAA04" "F" WHERE
11.01.2021	17:30:35	"F"."SID_OFISCPER" IN ( SELECT "MD1"."SID" FROM
11.01.2021	17:30:35	"/BIO/SFISCPER" "MD1" WHERE ( "MD1"."FISCPER" >=
11.01.2021	17:30:35	'2020010' )
11.01.2021	17:30:35	SQL-END: 11.01.2021 17:30:35 00:00:00
11.01.2021	17:30:35	SQL: 11.01.2021 17:30:35 FF_BWDEV9_T2
11.01.2021	17:30:35	LOCK TABLE "RSDRDLOGHEADER" IN EXCLUSIVE MOD
11.01.2021	17:30:35	SQL-END: 11.01.2021 17:30:35 00:00:00
11.01.2021	17:30:35	Job finished

Step 6 - Verify if the impacted data is deleted from reporting layer.

Step 7 - run the Delta DTP from Business layer to Reporting layer to load the request from Step 3 (As we use delta DTP there is no need to do an init)

Step 8 - Verify if the values appear in the report for the impacted data and inform the users

Step 9 - The DTP settings are to be corrected in WBP directly and then from WBD and moved to WBP to avoid such issues in the future