

PPE

Premier Pilotage Economique

=====

- [Contact](#)
- [Overview](#)
- [Detailed chart-flow](#)
- [PPE functional documentation](#)
- [PPS/PPE master data functional documentation](#)
- [Database Diagram](#)
 - [Main Master Data](#)
- [Universe Documentation](#)
 - [GL_MB_E \(UNV\) - Premier Pilotage Economique frozen universe in UNV version](#)
 - [GL_MB_E \(UNX\) - Premier Pilotage Economique in UNX version](#)
 - [Data Foundation \(PDF\)](#)
 - [Business Layer \(PDF\)](#)
- [Main BI4 Core Reports](#)
 - [BI4 core folder: 1 - PPS/PPE Corporate Reports](#)
- [Impact of PPE replacement in dashboard Analytics](#)
- [Useful links](#)

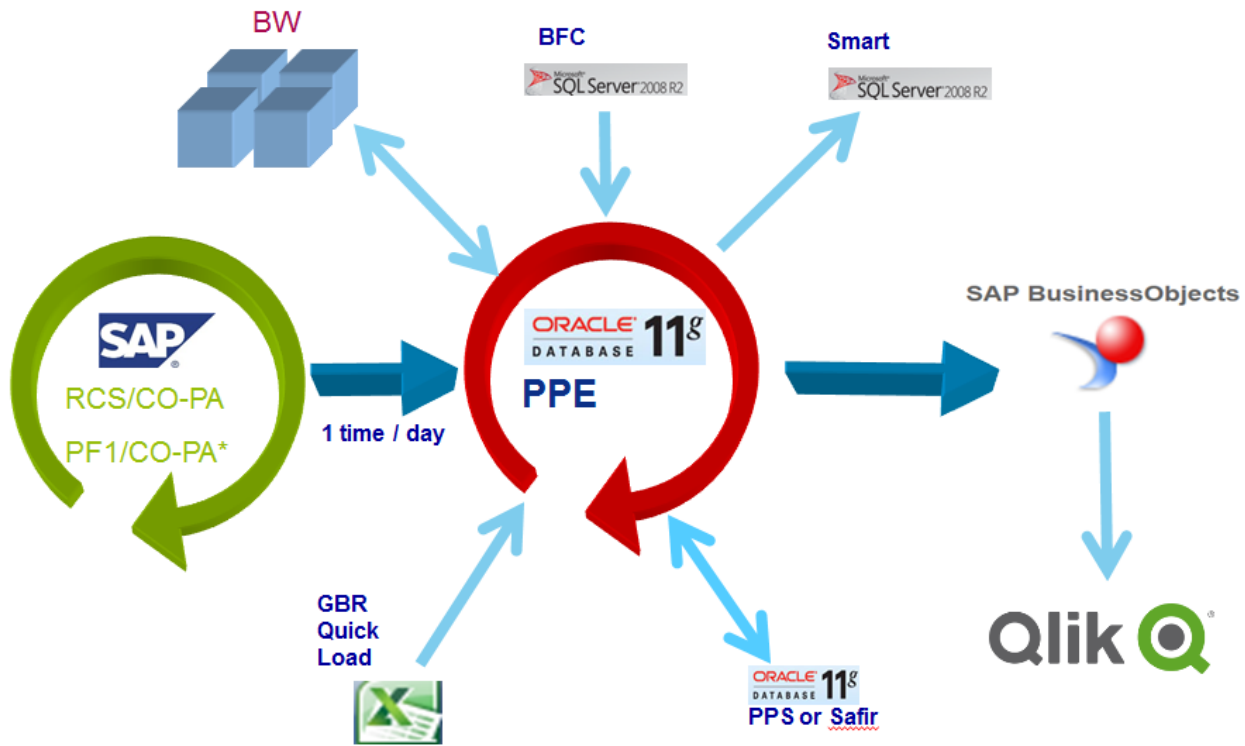
=====

Contact

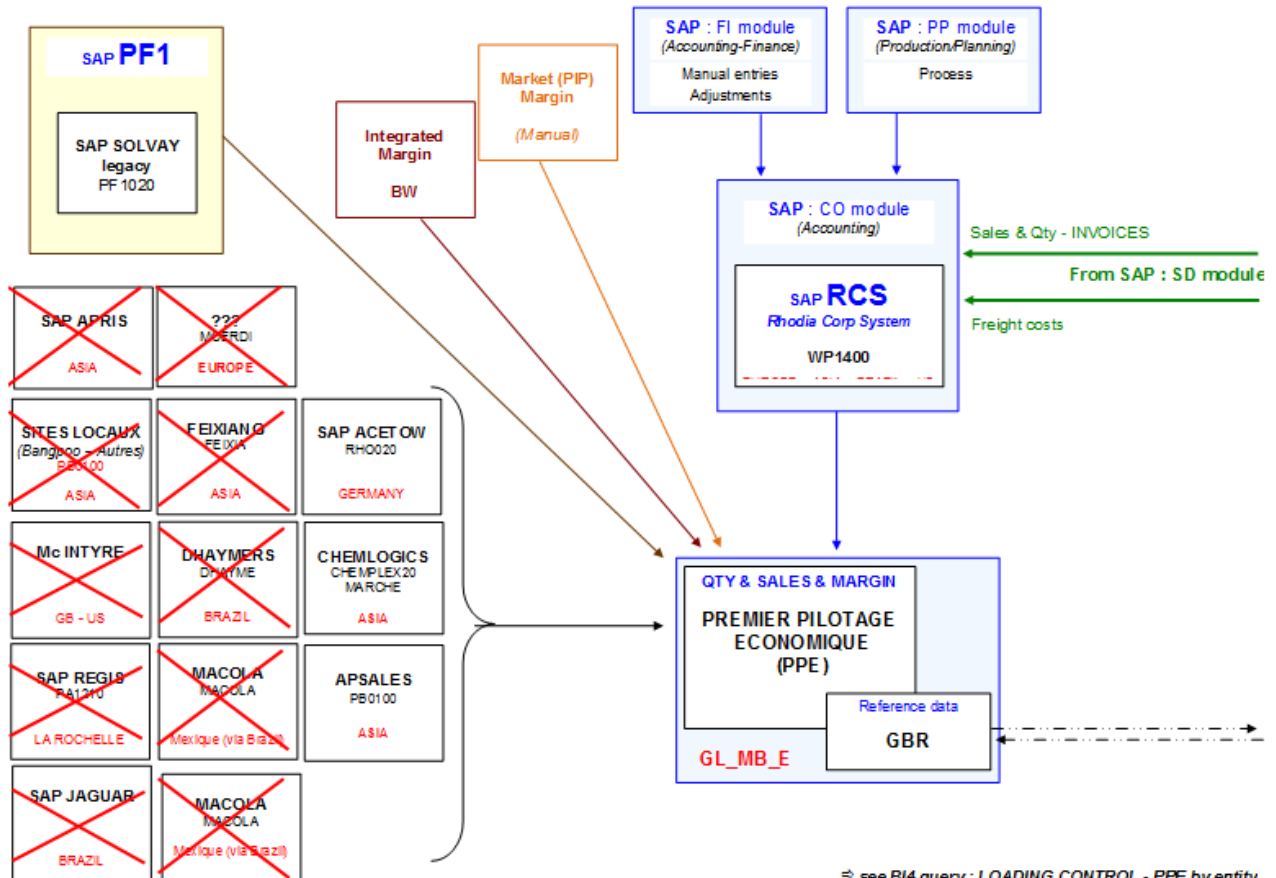
	BFC BU	RCS GBU	RCS Enterprises	Financial queries (with Contrib & Margin)	Broadcasts
all	Core Queries	all	all	Laurence De Zeeuw Charlotte Rollier	Laurence De Zeeuw Charlotte Rollier
CH	SPECIAL-CHEM other	ZSECT00075	ENTRP00003 - ENTRP00162 ENTRP00185 - ENTRP00186 ENTRP00187 - ENTRP00188		
CS	NOVECARE	ZSECT00011	ENTRP00020		
CT	COATIS	ZSECT00064	ENTRP00061 - ENTRP00156		
FI	FIBRAS	ZSECT00063	ENTRP00075 - ENTRP00080		
GY	SOLVAY ENERGY SERVICES	ZSECT00007	ENTRP00153		
PA	AROMA PERFORMANCE	ZSECT00066	ENTRP00108	Marie Pereira	Marie Pereira
PE	PEROXIDES	ZSECT00072	ENTRP00172 - ENTRP00191		
PM	PEPOL - ENGINEERING PLASTICS	ZSECT00077	ENTRP00030		
PM	PEPOL - ENGINEERING PLASTICS	ZSECT00077	query SAFIR SALES PLAN PRE-SOIP EPWWPPESAFIR R002 COMMODITY	Valerie Stoeckel	Valerie Stoeckel
PM	PEPOL - ENGINEERING PLASTICS	ZSECT00077	queries "NEW PRODUCT..."	--	--
PM	PEPOL - ENGINEERING PLASTICS	ZSECT00077	query KA REPORT	--	Sylviane Larboulette
PM	PEPOL - POLYAMIDE & INTERMED (in KGW)	ZSECT00077	ENTRP00031		
PM	PEPOL - other	ZSECT00077	ENTRP00103 - ENTRP00168		
SD	SODA ASH	ZSECT00073	ENTRP00173		
SI	SILICA	ZSECT00067	ENTRP00002	Audrey Laurent	Audrey Laurent
SP	SEPCIALITY POLYMER	ZSECT00071	ENTRP00170		
TO	ACETOW	ZSECT00019	ENTRP00151 - ENTRP00158 ENTRP00159 - ENTRP00160 ENTRP00161		
TS	TECHNOLOGY SOLUTIONS	ZSECT00078	ENTRP00190		

Overview

The PPE - Premier Pilotage Economique application deals with profitability analysis data extracted from SAP CO-PA module at an aggregated level including invoiced sales, variable costs, fixed costs, variable sales expenses in order to compute the contribution margin and gross margin



Detailed chart-flow



⇒ see BI4 query : LOADING CONTROL - PPE by entity

PPE functional documentation

PPE - F11EN - T(M) T(12) objects in PPE

PPE - F12EN - GROSS MARGIN computation in PPE

PPE - F14FR - KE24 et PPE

PPS/PPE master data functional documentation

PPE - F01FR - Taux de Change

PPE - F03EN - Neutralization Flag & Movement Type

PPE - F06EN - Key Accounts

PPE - F07EN - Sales Groups

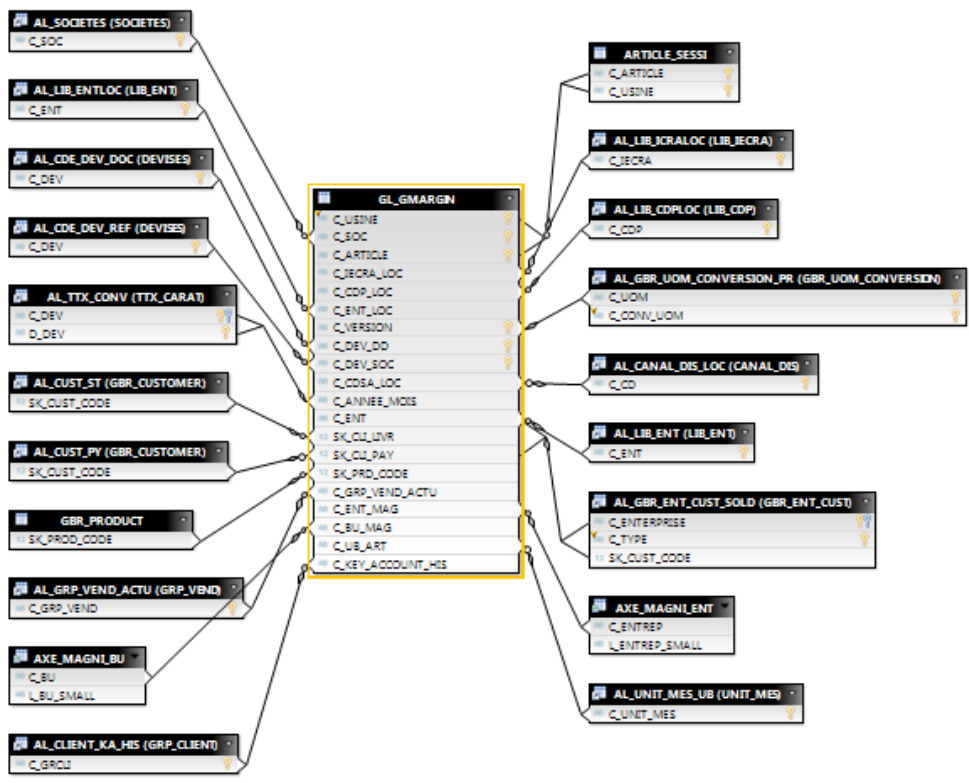
PPE - F08EN - BFC Axis

PPE - F09EN - Distributor Flag

PPE - F13FR - Axe Value-Stream

Database Diagram

Main Master Data



Universe Documentation

GL_MB_E (UNV) - Premier Pilotage Economique frozen universe in UNV version

This version of PPE universe has been kept for compatibility reasons in order to support non-migrated WebI reports from BOXI in personal folders.

Statistics:

- 127 Classes
- 2837 Objects
- 97 Tables
- 116 Aliases
- 201 Joins
- 0 Contexts
- 12 Hierarchies
- 83 Conditions

[Link to documentation of UNV version of GL_MB_E universe \(PDF\)](#)

GL_MB_E (UNIX) - Premier Pilotage Economique in UNIX version

The UNIX version of PPE universe is being updated regularly.

Data Foundation (PDF)

▲ Data Foundation	465
Alias Tables	119
Contexts	0
Derived Tables	4
Joins	217
Lists of Values	11
Parameters	12
Standard Tables	102
Tables	225
Views	0






Business Layer (PDF)

▲ Business Layer	3382
Attributes	0
Business Layer Views	0
Dimensions	1060
Filters	85
Folders	133
Lists of Values	123
Measures	1890
Navigation Paths	12
Parameters	79
Queries	0

Main BI4 Core Reports

BI4 core folder: [1 - PPS/PPE Corporate Reports](#)

blocked URL

	BW INTEGRATED MARGIN CONTROL CWWPPE R001
	CUSTOMER LIST CWWPPE V001
	KA CONTROL with date (from/to) in BI4 CWWPPE_R001
	MATERIAL AIT RATE CONTROL CWWPPSPE R001
	Structure Evolution between 2 years CWWPPE

10.1 - Alignment Project - BFC (Magnitude)

- Magnitude zwfat_explanation
- MAGNITUDE 01 MARKET CONTROL_CWWPPE_003
- MAGNITUDE 02 CODE SL CONTROL_CWWPPE_002
- MAGNITUDE 03 INTRAGROUP SALES CONTROL_CWWPPE_003
- MAGNITUDE 04 GENERIC PARTNER CONTROL_CWWPPE_003
- MAGNITUDE BATCH ENTRY_CWWPPE_004

blocked URL

- BUSINESS MOVEMENT TRACKING REPORT CWWPPE_001
- DISTRIBUTION REPORT Y Y-1 _CWWPPE_R001
- KEY ACCOUNT MANAGEMENT REPORT Y Y-1_CWWPPE_R001
- MARGES EN STOCK CWWPPE_V003 (PUB)
- SALES TREND & MANAGEMENT REPORT CWWPPE_R001
- SALES-REP SALES Y vs Y-1_CWWPPE_002

12 - Sales & profitability

- BO vs BFC_CWWPPE_R001
- DISTRIBUTION REPORT with CONTRIB-MARGIN Y Y-1 _CWWPPE_R002
- KEY ACCOUNT MANAGEMENT REPORT Y Y-1_INT_STD_MARGIN_CWWPPE_R002
- NEGATIVE INTEGRATED MARGINS CWWPPE_V003
- NEGATIVE MARGINS CWWPPE_V006
- P&L - CLOSING RESULT ANALYSIS BY ENTERPRISE & LEGAL COMPANY CWWPPE_008
- SALES TREND & MANAGEMENT REPORT with CONTRIB-MARGIN (period) CWWPPE_R001
- SALES-REP SALES (Y vs Y-1) with CONTRIB-MARGIN_CWWPPE_R001
- TRANSFER PRICE DISTRIBUTION CWWPPE_V005
- TRANSFER PRICE DISTRIBUTION macro
- TRANSFER PRICE DISTRIBUTION Procedure
- VOLUME PRICE VARIANCE Core Query Instructions
- VOLUME PRICE VARIANCE_CWWPPE_006

13 - Orders, shipments and invoices follow up

- BILLING INTRA-Sales & Sales-TO-CUST CWWPPE_001

Impact of PPE replacement in dashboard Analytics

Useful links

[Link to UpToDate documentation of universes \(from 360 eyes\)](#)

[Link to Knowledge Transfer to CGI documents for PPE universe](#)