

PPS

Premier Pilotage Sales

=====

- [Contacts](#)
- [Overview](#)
- [Detailed chart-flow](#)
- [PPS functional documentation](#)
- [PPS/PPE master data functional documentation](#)
- [Database Diagram](#)
 - [Main Fact Tables](#)
 - [Main Master Data](#)
- [Universe Documentation](#)
 - [PP_F1_E \(UNV\) - Premier Pilotage Sales frozen universe in UNV version](#)
 - [PP_F1_E \(UNX\) - Premier Pilotage Sales in UNX version](#)
 - [Data Foundation \(PDF\)](#)
 - [Business Layer \(PDF\)](#)
- [Main BI4 Core Reports](#)
 - [BI4 core folder: 1 - PPS/PPE Corporate Reports](#)
- [Useful links](#)

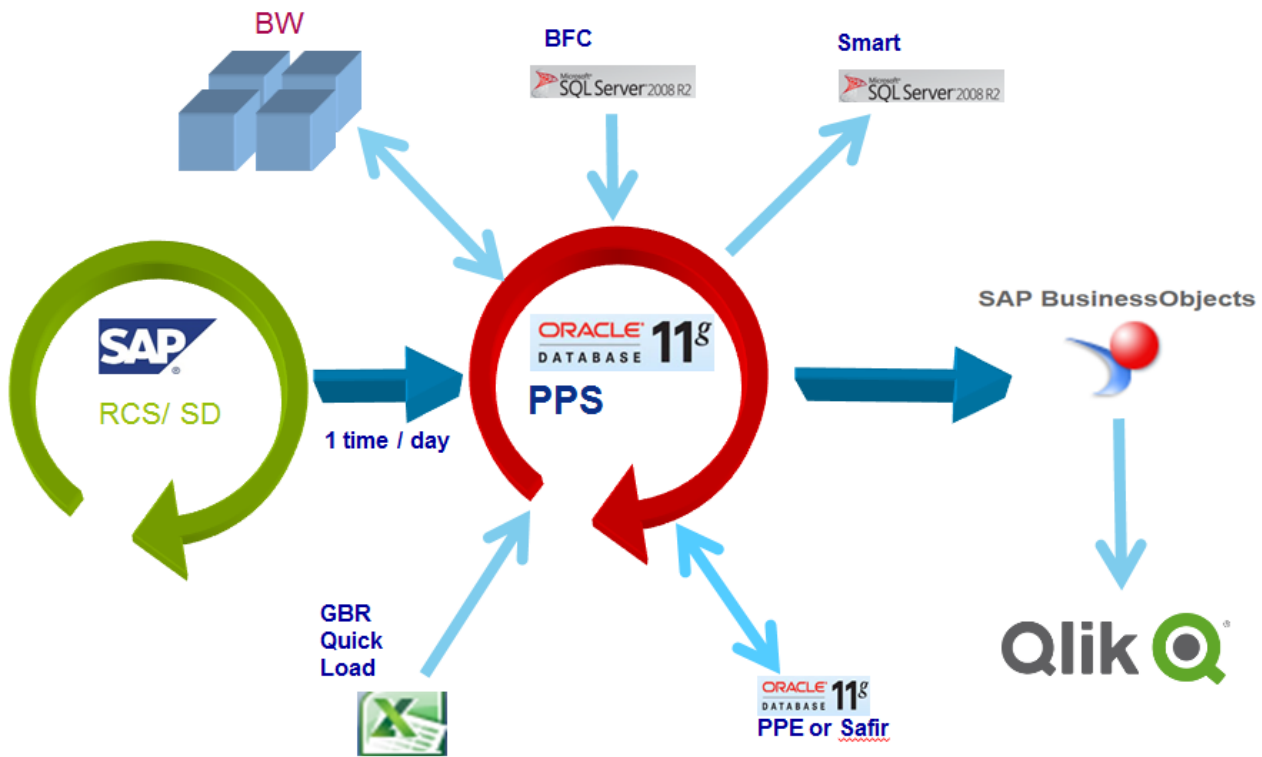
=====

Contacts

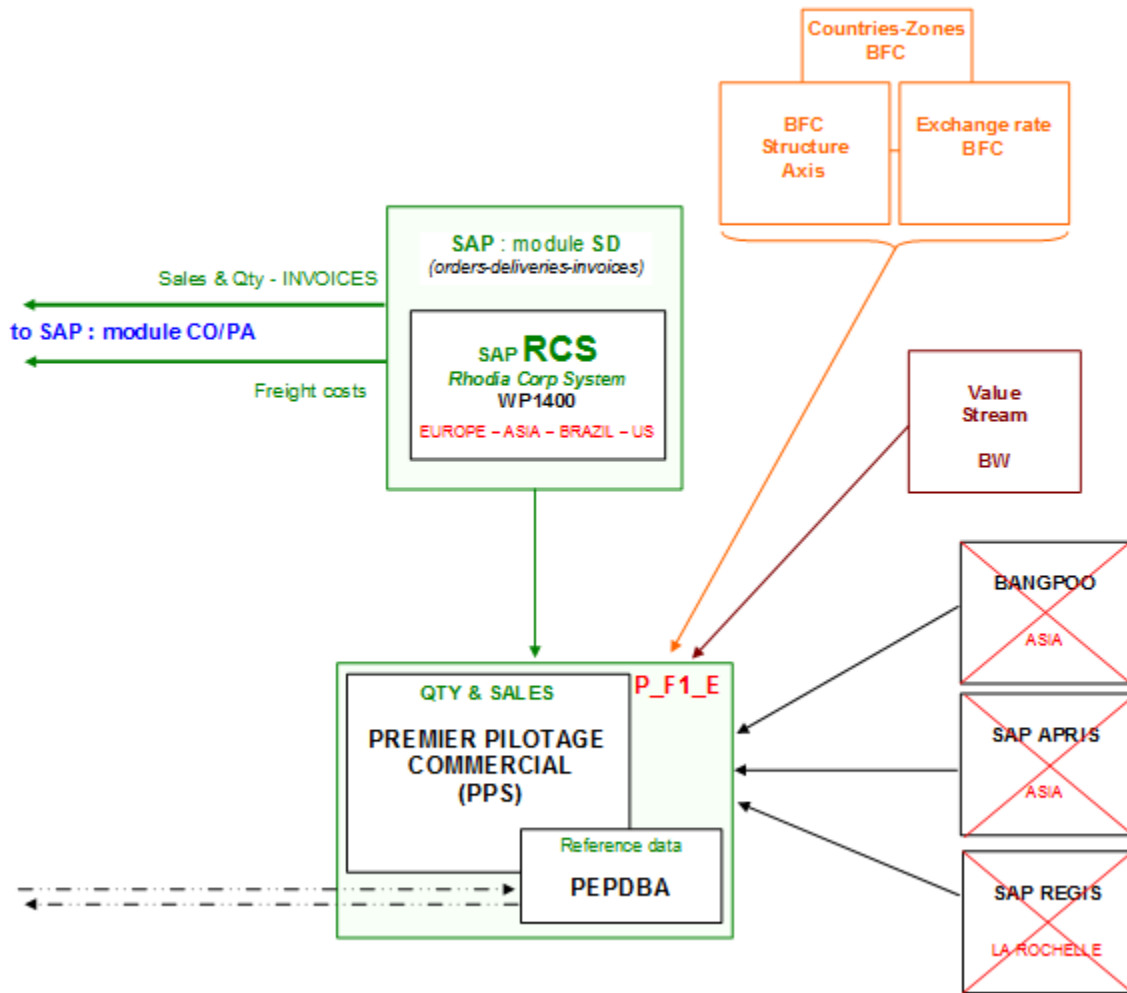
BFC BU	RCS GBU	RCS Enterprises	Other queries	Broadcasts
Core Queries	all	all	Laurence De Zeeuw Sandra Silveira Diogo Paiva	Laurence De Zeeuw Sandra Silveira Diogo Paiva
SPECIAL-CHEM other	ZSECT00075	ENTRP00003 - ENTRP00162 ENTRP00185 - ENTRP00186 ENTRP00187 - ENTRP00188		
NOVECARE	ZSECT00011	ENTRP00020	Justin Chafey	
COATIS	ZSECT00064	ENTRP00061 - ENTRP00156		
FIBRAS	ZSECT00063	ENTRP00075 - ENTRP00080		
SOLVAY ENERGY SERVICES	ZSECT00007	ENTRP00153		
AROMA PERFORMANCE	ZSECT00066	ENTRP00108	Marie Pereira	Marie Pereira
PEROXIDES	ZSECT00072	ENTRP00172 - ENTRP00191		
PEPOL - ENGINEERING PLASTICS	ZSECT00077	ENTRP00030		
PEPOL - ENGINEERING PLASTICS	ZSECT00077	query SAFIR SALES PLAN PRE-SOIP EPWWPPESAFIR R002 COMMODITY	Valerie Stoeckel	Valerie Stoeckel
PEPOL - ENGINEERING PLASTICS	ZSECT00077	queries "NEW PRODUCT..."	Martine Mauco	--
PEPOL - ENGINEERING PLASTICS	ZSECT00077	query KA REPORT	--	Sylviane Larboulette
PEPOL - POLYAMIDE & INTERMED (in KGW)	ZSECT00077	ENTRP00031		
PEPOL - other	ZSECT00077	ENTRP00103 - ENTRP00168		
SODA ASH	ZSECT00073	ENTRP00173		
SILICA	ZSECT00067	ENTRP00002	Audrey Laurent	Audrey Laurent
SEPCIALITY POLYMER	ZSECT00071	ENTRP00170		
ACETOW	ZSECT00019	ENTRP00151 - ENTRP00158 ENTRP00159 - ENTRP00160 ENTRP00161		
TECHNOLOGY SOLUTIONS	ZSECT00078	ENTRP00190		

Overview

The PPS - Premier Pilotage Sales application deals with sales data extracted from SAP SD module (Rhodia Legacy only) at a detailed level including sales orders, deliveries, shipments and invoices.



Detailed chart-flow



PPS functional documentation

Link for general PPS documentation (sorry but a part of this document is in french ... blocked URL)

PPS - F01EN - Order Book Business View

PPS - F02EN - Order Book To Be Issued

PPS/PPE master data functional documentation

PPE - F01FR - Taux de Change

PPE - F03EN - Neutralization Flag & Movement Type

PPE - F06EN - Key Accounts

PPE - F07EN - Sales Groups

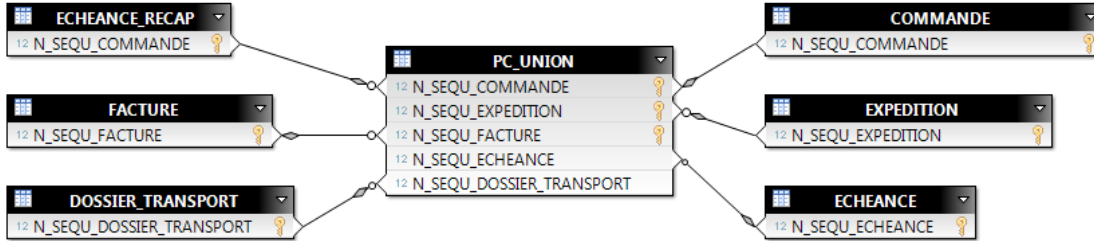
PPE - F08EN - BFC Axis

PPE - F09EN - Distributor Flag

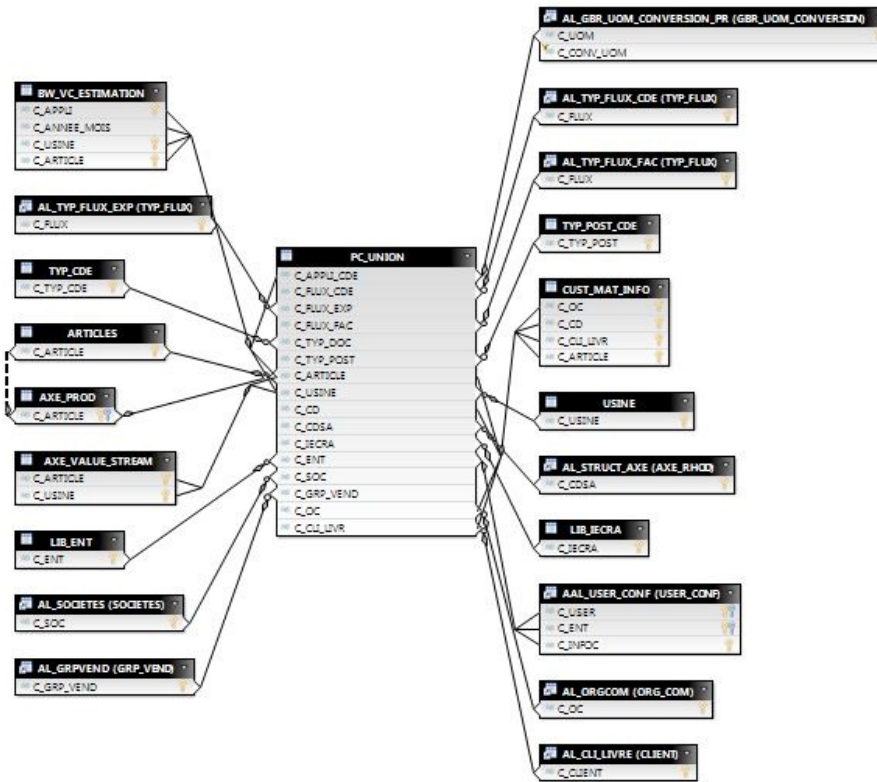
PPE - F13FR - Axe Value-Stream

Database Diagram

Main Fact Tables



Main Master Data



Universe Documentation

PP_F1_E (UNV) - Premier Pilotage Sales frozen universe in UNV version

The UNV version of PPS universe has been kept for compatibility reasons in order to support non-migrated WebI reports from BOXI in personal folders.

Statistics:

- 76 Classes
- 1717 Objects
- 123 Tables
- 176 Aliases
- 298 Joins
- 0 Contexts
- 14 Hierarchies
- 126 Conditions

[Link to documentation of UNV version of PP_F1_E universe \(PDF\)](#)

PP_F1_E (UNX) - Premier Pilotage Sales in UNX version

The UNX version of PPS universe is being updated regularly.

Data Foundation (PDF)


▲ Data Foundation	653
Alias Tables	186
Contexts	0
Derived Tables	4
Joins	319
Lists of Values	4
Parameters	10
Standard Tables	130
Tables	320
Views	0




Business Layer (PDF)

▲ Business Layer	2312
Attributes	0
Business Layer Views	0
Dimensions	1536
Filters	132
Folders	81
Lists of Values	177
Measures	272
Navigation Paths	14
Parameters	100
Queries	0

Main BI4 Core Reports

BI4 core folder: [1 - PPS/PPE Corporate Reports](#)

 10 - Data administration

	CUSTOMERS RCS SALES-VIEW CONTROL CWWPPS R001
	KA CONTROL w/o date in BI4 CWWPPS_R001
	MATERIAL AIT RATE CONTROL CWWPPSPPE R001

11 - Sales reports

COMMISSION SALES BY AGENT (ACCRUAL)_CWWPPS_R001

13 - Orders, shipments and invoices follow up

- INVOICING BUSINESS ACCURACY REPORT_CWWPPS_R001
- LIST OF DELIVERIES_CWWPPS_R001
- LIST OF INVOICES_CWWPPS_R002
- MINIMUM ORDER VALUE FOLLOW UP_CWWPPS_R001
- ORDER ANALYSIS FOLLOW UP_CWWPPS_R001
- ORDER BOOK BUSINESS VIEW (TO BE INVOICED) & FORECAST CWWPPS-SAFIR R001
- ORDER BOOK BUSINESS VIEW (TO BE INVOICED) CWWPPS_RO001
- ORDER BOOK BUSINESS VIEW (TO BE INVOICED) DOCUMENTATION
- ORDER BOOK BUSINESS VIEW SUMMARY_CWWPPS_RO001
- ORDER BOOK TO BE ISSUED CWWPPS_RO001
- ORDER BOOK TO BE ISSUED DOCUMENTATION
- POST INVOICING ANALYSIS REPORT_CWWPPS_R001

14 - Front Office

- INFO PRODUCT REPORT_CWWPPS_R001
- PAYMENT TERMS FOLLOW UP_CWWPPS_R001
- REBATES FOLLOW UP REPORT_CWWPPS_R001

15 - ECommerce - EInvoicing

- eCOMMERCE ACTIVITY FOLLOW-UP REPORT CWWPPS_R003
- eCOMMERCE DASHBOARD_CWWPPS_R004
- eINVOICING - MONTHLY DASHBOARD_CWWPPS_R002

16 - Pricing

- PRICE MONITORING ANP TREND REPORT CWWPPS_R001
- PRICE MONITORING ANP TREND REPORT WITH PERIOD OF REFERENCE CWWPPS_R001

17 - Supply Chain

- CORPORATE OTIF ANALYSIS - SCE CWWPPS_R0001
- DAILY EXPEDITION_ORDER BOOK TO BE ISSUED CWWPPS_RO001
- DELIVERIES BOOK_MANAGEMENT AND FOLLOW UP REPORT_CWWPPS_R002
- LIST OF ORDERS_CWWPPS_R001
- OTIF - FIRST/LAST ATP DATES rule in PPS
- OTIF C BY VALUE STREAM_CWWPPS_R001

18 - EHS : Environment, Health and Safety

SALES REPORTING by COUNTRIES for EHS team_CPPPE_001

19 - APO

APO FORECAST & TO BE ISSUED QUANTITIES CWWPPS-SAFIR_R002

APO FORECAST in SAFIR CWWSAFIR_001

98 - OpenDoc

PP_F1_E_Order_Analysis_CWWPPS

Useful links

[Link to UpToDate documentation of universes \(from 360 eyes\)](#)

[Link to Knowledge Transfer to CGI documents for PPS universe](#)

Workflow history

This view shows the 5 most recent entries. The complete workflow log is available from the 'Document Activity' menu item.

From May 19, 2016 to May 25, 2025	Actor	Type	Activity	Version
	Laurence De Zeeuw , Jose Alvaro De Jesus Monteiro , SWAMI-ext, Shivani Siddhrameshwar and Stéphane Mignard-Ex	Edit	multiple updates from Laurence De Zeeuw , Jose Alvaro De Jesus Monteiro , SWAMI-ext, Shivani Siddhrameshwar and Stéphane Mignard-Ex	
Apr 17, 2015	Jose Alvaro De Jesus Monteiro	Edit	created the page at 2:10 pm	