

# zzz ICPM - Innovation Critical Path Method

*This folder is no more used. It has been flagged as **OBSOLETE in 05/2019**.*

*But loading Jobs and universes are kept until end of BI4 decommissioning*

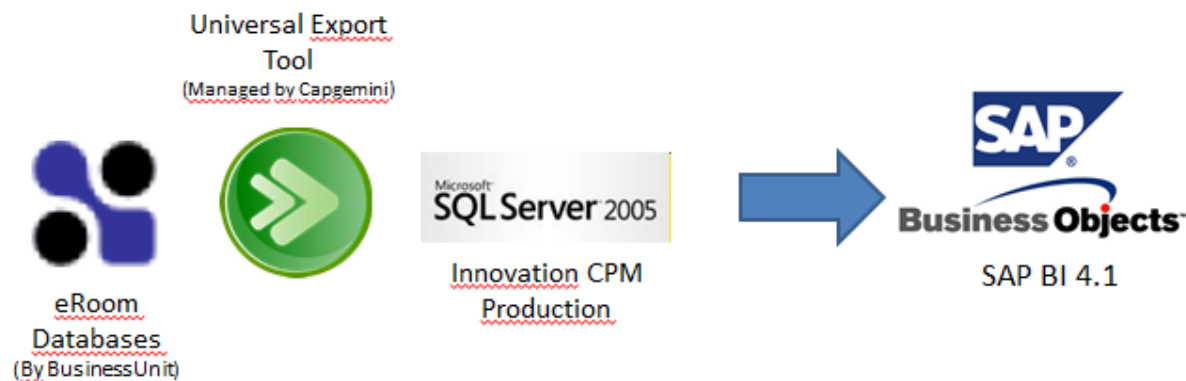
*See in this [link](#) list of users whose rights have been removed*

- 
- [OVERVIEW](#)
  - [DATABASE](#)
    - [ICPM v2.5 Database Diagram](#)
  - [DATA LOADING](#)
  - [UNIVERSE](#)
    - [ICPMv2.5.UNV](#)
    - [BI4 connexion to E-room database](#)
  - [MAIN BI4 REPORTS](#)
    - [BI4 core folder: 511 - ICPM \(Private\)](#)
  - [USEFUL LINKS](#)
  -
- 

*\*\*\* No WebI report using this universe has been refreshed by end users in 2016 \*\*\**

## OVERVIEW

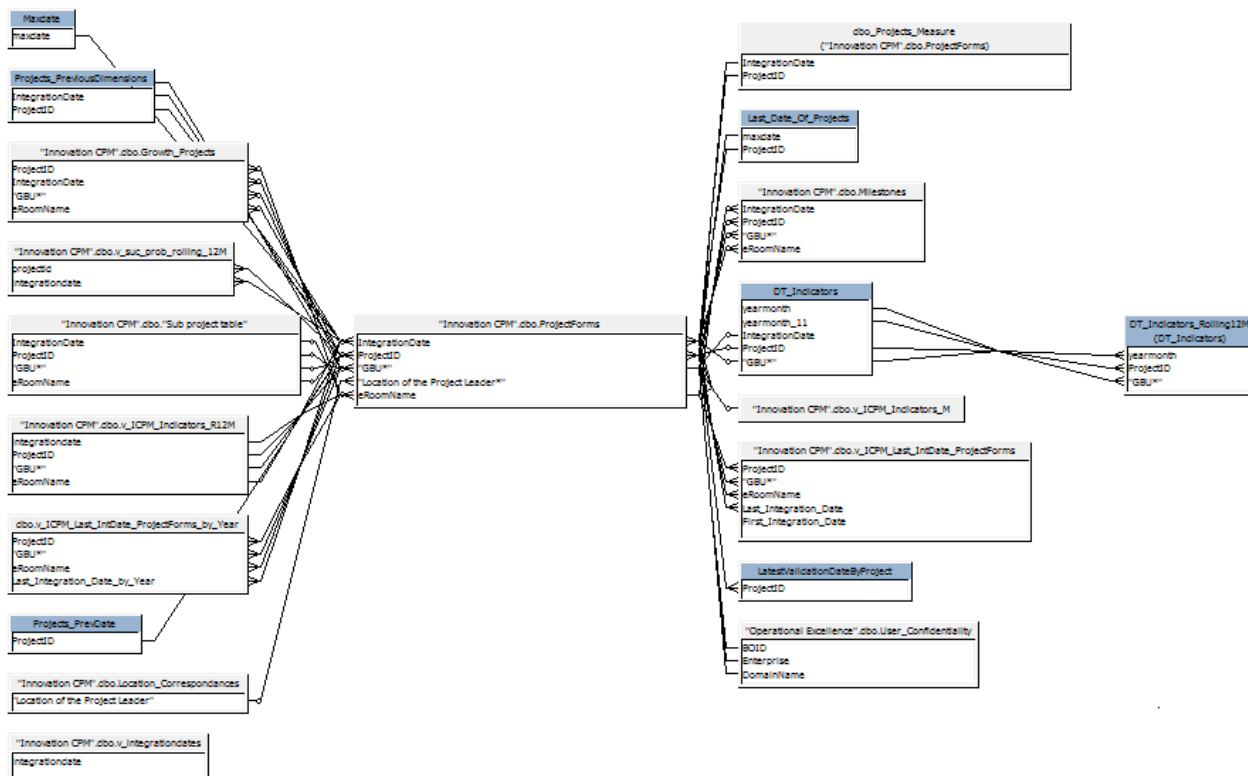
The ICPMv2.5 BI4 application deals with R&D projects portfolio stored in eRoom databases.



The universal export tool makes snapshot copies from eRoom databases with the same template to a sqlserver database

## DATABASE

### ICPM v2.5 Database Diagram



Several snapshots are available in the replicated database having the Integration Date as the snapshot ID.

## DATA LOADING

ICPM snapshots are created in SQLServer replicated database twice a week (Monday and Thursday) from eRoom databases of several Business Units but having the same eRoom database template. Anyway only the latest snapshot copy for each month is kept in the replicated sqlserver database.

## UNIVERSE

### ICPMv2.5.UNV

- 18 classes
- 325 objects
- 17 conditions
- 18 tables
- 2 alias
- 18 joins
- 3 contexts
- 1 hierarchies

[Link to documentation of UNV version of ICPMv2.5 universe \(PDF\)](#)

### BI4 connexion to E-room database

**Edit Proban connection**

**Login parameters [3/5]**  
Define the login parameters to access your Microsoft SQL Server database using OLEDB

Authentication Mode: Use specified username and password

User Name: BI4\_User

Password: xxxxxxxxxxxx

Server: wdcectp21\ecollab

Database: Proban

Test Connection < Back Next > Cancel Help

## MAIN BI4 REPORTS

BI4 core folder: [511 - ICPM \(Private\)](#)

51 - R&D	
511 - ICPM (Private)	
511 - ICPM (Public)	
511 - ICPM Enterprise-Linked Reports	
Novocare	
R&D Innovation Excellence	
ICPM List of all Milestones by GBU & Project 002	ICPM Complete Extraction 004
ICPM Milestones Analysis 004	ICPM Operational Excellence Indicators Dynamics 007
ICPM Quality Dashboard 002	ICPM Operational Excellence Indicators Snapshot 007
ICPM Sustainable Development Indicators 004	ICPM Project Card 004
	ICPM Success Rates Rolling 12 Months

## USEFUL LINKS

[Link to UpToDate documentation of universes \(from 360 eyes\)](#)

[Link to Knowledge Transfer documents for ICPM](#)

**\*\*\* This application is not in the list of planned eRoom applications to be migrated to SQLServer 2008 \*\*\*** [see details ...](#)

