

Factory calendar

Factory calendar of WBP come from WP1 (WP1_400), loading is done in [PC_TECH_01](#) with program RSIMPCUST and variant Z_FACT_CAL_WP1.

The factory calendar are used in the schedule of process chain (14, 50 for D4 process chain, BE or FR) and also used in the transformation or program to manage some business rules linked with transactional data for example on GTS dataflow.

In the end routine of the transformation TRSF : DP_GTS01 -> DB_GTS01, used to calculate a duration :

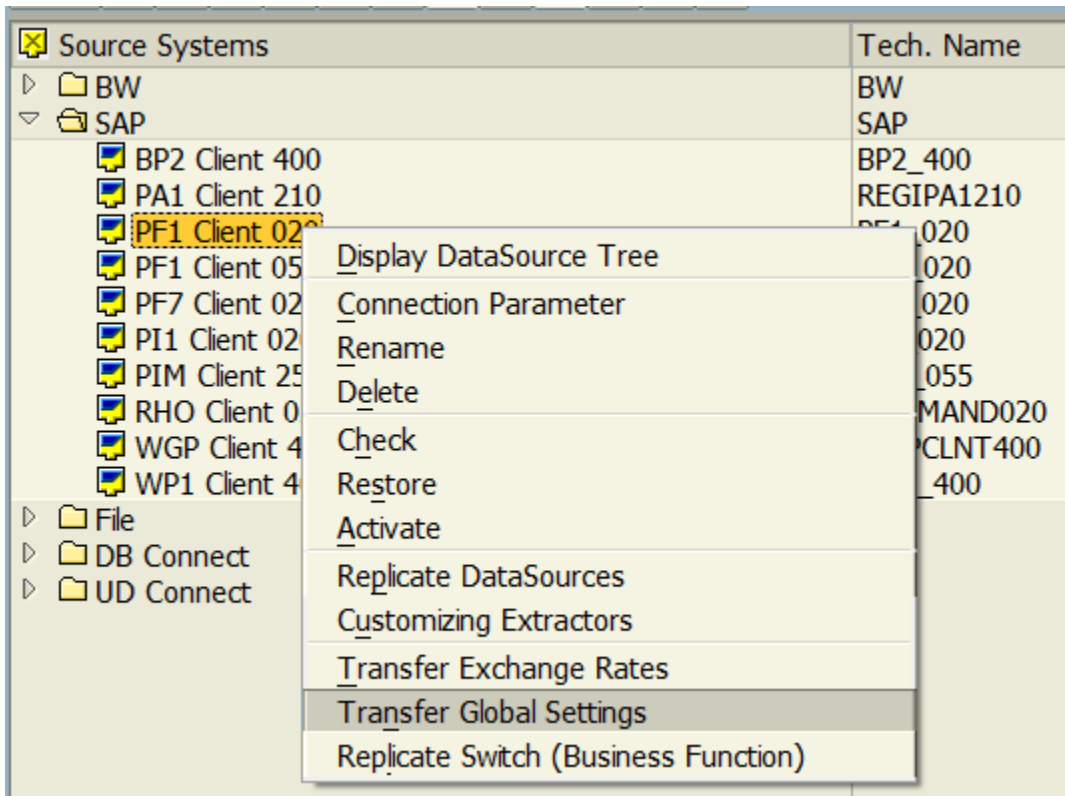
```
400      ENDIF.  
401      * Calculation of the duration of blocking  
402      IF v_emb_b_d NE '00000000'  
403      AND v_emb_r_d NE '00000000'  
404      AND v_emb_r_d >= v_emb_b_d.  
405          CALL FUNCTION 'DURATION_DETERMINE'  
406              EXPORTING  
407                  unit                = 'H'  
408                  factory_calendar    = v_cal  
409              IMPORTING  
410                  duration            = v_emb_1  
411              CHANGING  
412                  start_date         = v_emb_b_d  
413                  start_time         = v_emb_b_t  
414                  end_date           = v_emb_r_d  
415                  end_time           = v_emb_r_t  
416              EXCEPTIONS  
417                  factory_calendar_not_found = 1.  
418  
419      IF sy-subrc <> 0.  
420          MESSAGE ID sy-msgid TYPE sy-msgty NUMBER sy-msgno  
421              WITH sy-msgv1 sy-msgv2 sy-msgv3 sy-msgv4.  
422      ENDIF.  
423
```

To avoid this kind of message during a loading :

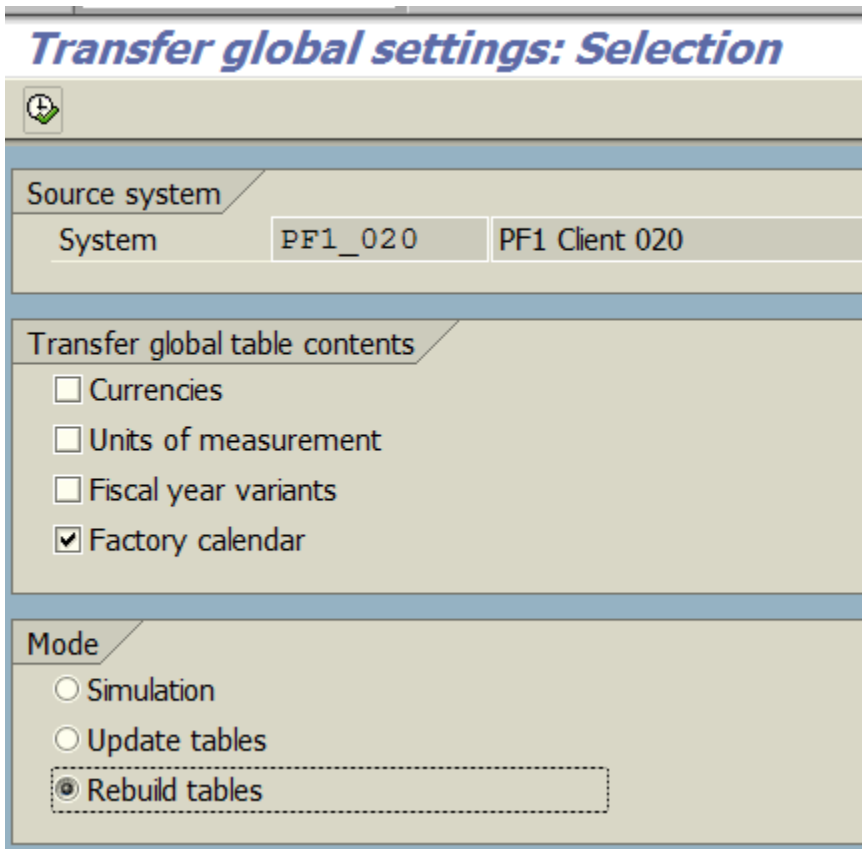
[blocked URL](#)

The rebuild tables is done every day at 11.30 am.

To schedule the transfert of data from PF1_020, go to RSA1 -> source system -> right click and transfert global settings.



Then choose factory calendar and rebuild tables.



It only remains to choose when schedule the transfert of data (program, execute in background...)

Background Print Parameters

Output Device: loc

Number of copies: 1

Number of pages

Print all

Print from page: 0 To: 0

✓ Properties ✕ ⓘ

Settings of the schedule for this job :

Every days at 11:30am / Calendar BE

Start Time

Immediate | Date/Time | After job | After event | At operation mode

Date/Time

Scheduled start: Date: 24.01.2017 Time: 11:30:00

No Start After: Date: Time:

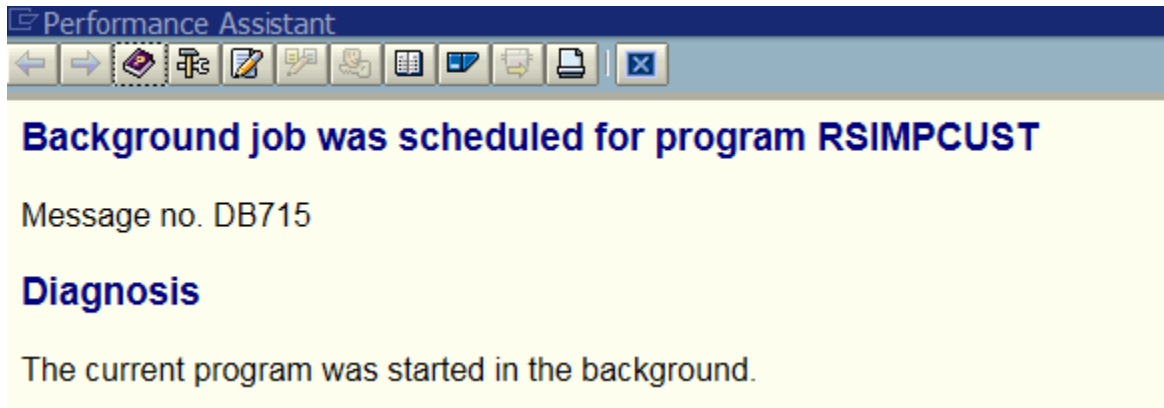
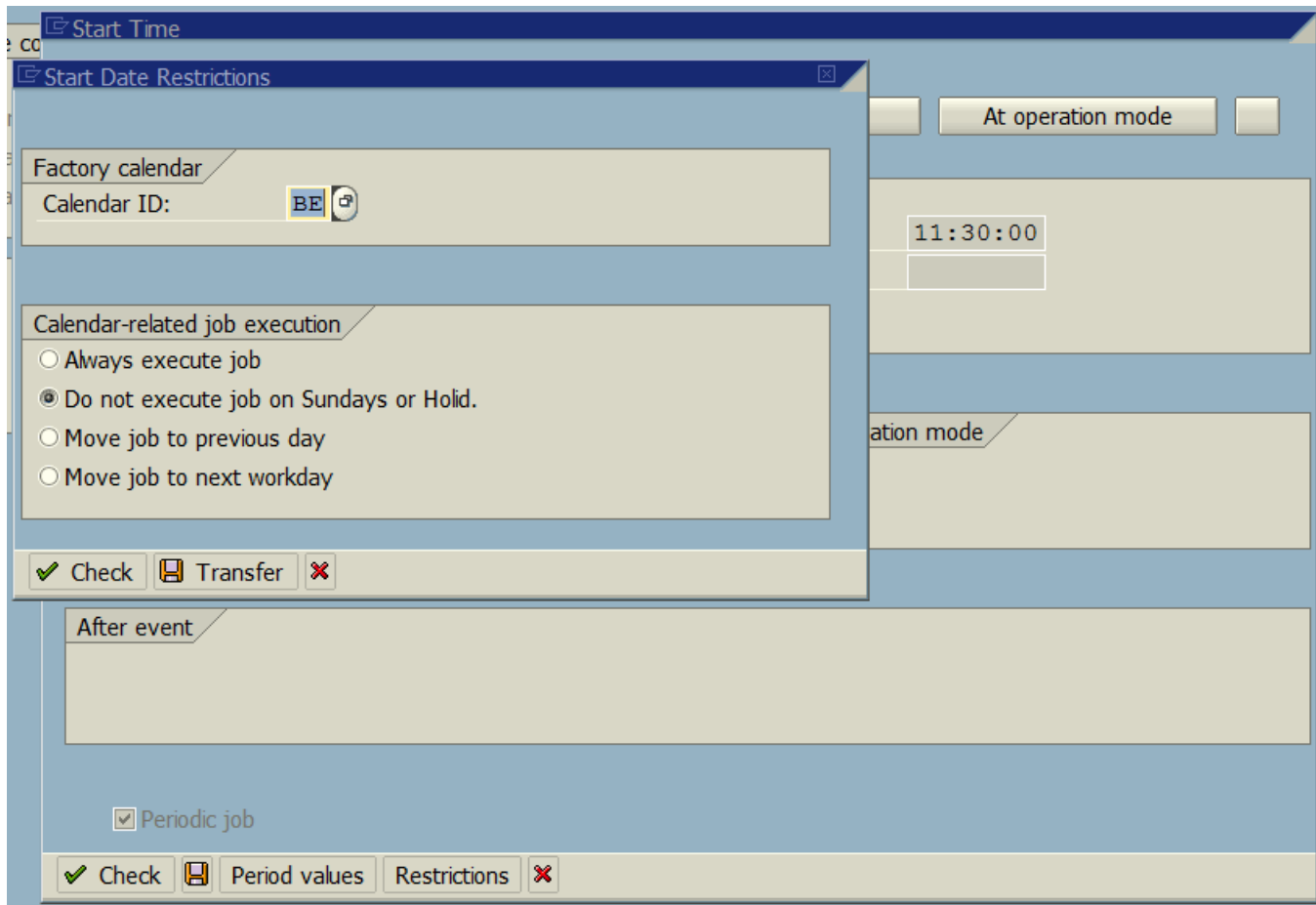
After job

At operation mode

After event



Periodic job

✓ Period values Restrictions



It is RSIMPCUST program but for Calendar

ABAP: Selections of Variant &00000000000009

Catalog  Values  Attributes



Objects for selection screen

Selection Scrns	Field name	Type	I/E	Option	frm	to
1000	LOGSYS	P			PF1_020	
1000	LOGSYSNM	P			PF1 Client 020	
1000	Currencies	P				
1000	Units of measurement	P				
1000	Fiscal year variants	P				
1000	Factory calendar	P			X	
1000	ANALYZE	P				
1000	UPDATE	P				
1000	SYNCH	P			X	