

# BW RTR - i-MEP (WBP) !\ Obsolete !\



The new wiki link for this data flow is here:

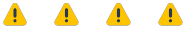
[Technical Documentation - IMEP](#)

Please update the doc there and no longer here.



- General presentation
  - Objective of the application
  - Usage information
  - History
- Roles & Access
  - Roles and access
  - Authorization objects
- Dataflow overview
  - PF1
    - Flat Files & WP1
  - Functional and Technical rules on Workbench + Reporting
  - Rules & Explanations
    - Source tables
      - Table ZWPPMCKOST / i-MEP extraction table
      - Table ZZX\_CO2\_COEFFS / Energy and CO2 Emission Coefficients
      - Table TKKH2 / Origin Group Texts in CO Object
      - View ZBW\_V\_TKKH2 / Origin Group Texts
      - View ZBW\_V\_CKPX / Cost Objects Hierarchies
      - View ZBW\_V\_ETABR3 / Establishment Texts
    - At datasource level (PF1/WP1)
      - Controlling Area (OCO\_AREA)
      - Cost Component Structure (OCCOMPSTRUC)
      - Cost Element Texts (OCOSTELMNT) & Statistical Key Figure (OSTKEYFIG)
    - At business level (WBP)
      - GBU (CPFCTR1\_2)
      - Exclude activity and Balancing movements (C\_EXACBMO)
      - Material Ledger Costs Split (K\_MLWRT)
      - Origin Split (C\_ORIGIN)
        - Origin Texts
      - Origin Group (C\_HRKFT)
      - Total Actual Quantity Conversion
      - Master Data Cost Element (OCOSTELMNT)
  - Dependencies with other applications
- Data loadings
  - Info providers and objects loaded
    - Global Filters (C\_GLBFLT) used in Chains
    - ABAP Programs used in Chains
      - Further explanations for program ZBW\_IMEP001
      - Further explanations for program ZBW\_IMEP002
        - Interface
        - Source Code
          - Interface
          - Import File
          - Program Output
          - Program Load
          - Program Log
      - Further explanations for program ZBW\_IMEP003
      - Further explanations for program ZBW\_IMEP004
    - Main Chains
      - SAP events detail
    - Sub Chains
    - Loading frequency
  - Average performance
  - Record Keeping
- Reporting
  - Queries End User Documentation
    - IMEP Glossary : IMEP - Characteristics
  - Main queries
  - Main functionalities
    - "Special" KPIs
  - Broadcast
- Maintenance
  - Known bugs

- [Recurring procedure](#)
  - [Reload data on a given period](#)
- [Planned Evolution](#)



**The new wiki link for this data flow is here:**

**[Technical Documentation - IMEP](#)**

**Please update the doc there and no longer here.**



## General presentation

### Objective of the application

**i-MEP** stands for **I**ntegrated **M**anufacturing & **E**nergy **P**erformance

The I-MEP application provides to business the possibility to analyze the production's target cost, actual cost, the variance for each cost item in process order, the cost collector, and to determine energy consumption and CO2 emission during production process.

BI manufacturing reports will replace house solutions :

- on RCS (WP1) : programs ZWPP40A/B/C
- on Solvay (PF1) : program Z1K\_MATCOST (Prix de Revient)

Tool Leader + IT leader of the application:

### Usage information

Around 400 users worldwide.

Access to ZIMEP\_FILE transaction for Flat File Integration is limited to 17 users as of 26.07.2018.

### History

2020.08:

- Update of WP1 Dataflow to make use of Hana. DPCOPP02 replaced by APCOPP02 and DBCOPP02/05 replaced by ABCOPP02.

2018.10:

- Update Current Month Loading Period to be reloaded every day of the month (except Sundays), including closing period.
- Split Global Filters SOLV\_DEL, SOLV\_LOAD, RCS\_DEL and RCS\_LOAD between Current Period and Previous Period to reduce risks of collisions between the chains.
- Update Main Process Chains to reduce risks of collisions: Coefficients, Plants for ML Split and Texts only loaded in Current Month chain (once a day).
- Creation of C\_IMEPAPP and update of the AppLoadStatus program to load C\_IMEPAPP at the same time as C\_BWAPP for Applications "IMEP\*"

2018.06-2018.07:

- Evolution of CC Postings flow (CRCOPP06). Data is now separated between Production CC postings (CRCOPP06) and Other CC postings (CRCOPP10)
- Creation of C\_ORIMAP2, in reference to C\_MATPNT2, to collect Cost Object from PF1
- Update of Programs ZBW\_IMEP002/ZBW\_IMEP003 to take into account the Fiscal Year and a list of Plants when importing Flat Files.
- Update of associated Process Chains to take these changes into account.
- Creation of Historical Process Chain, to store M-2 data from CRCOPP01 into CRCOPP04 once a month.
- Deployment of authorization ZR\_RCS\_CA\_M551 to controllers for Flat Files Integration.

2018.04:

- Creation of C\_ORIMAP3, in reference to C\_MATPNT3, to collect Origin Group from PF1 table MBEW.
- Evolution of Main IMEP flow (CRCOPP01/04). Data is no longer separated by Index1, but in current data (CRCOPP01, M & M-1) and history (CRCOPP04, M-2 and older).
- Update of associated Process Chains to take this change into account.

- Creation of Program ZBW\_IMEP004 to delete history data from DBCOPP01 after they have been moved to DBCOPP04.
- Update on how Real Factors are calculated in DSO DBCOPP10.

2018.03:

- Implementation of Cost Centers postings (CRCOPP06) & Cost Centers SKF postings (CRCOPP07) flows.
- Implementation of Cost Center Postings Budget Import (CRCOPP08) flows.
- Creation of Process Chains PC\_CO\_IMEP\_32/33/34/35/36, for CC Posting Budget Import.
- Update of ZBW\_IMEP002 to integrate CC Posting Budget Flat Files.
- Creation of C\_CELTHX5, 5th and last level of XCS-ALL hierarchy in 0COSTELMNT.

2018.01:

- Creation of Process Chains PC\_CO\_IMEP\_28/29/30, collecting Standard Key Figure Attributes and Texts from PF1.
- Implementation of Business Rules and Selective Deletion in InfoProviders for ZBW\_IMEP002.
- Update of Flat File Integration structure - removed obsolete InfoProviders.

2017.12:

- Creation of C\_KSTRG4 (Cost Object Hierarchy) and C\_ETABR3 (R/3 Establishment)
- Implementation of new flows for above MDs
- Update of C\_MATPNT2 to include above MDs as attributes
- Update of Flat File Integration structure

2017.11:

- Separation of Process Chains for daily loading for Current Month (events XXX) and Previous Month (events XXX\_PREV\_MTH) Loadings
- Implementation of Material Ledger Costing Split
- Implementation of Origin Split & Origin Group
- Implementation of Cost Element Group

## Roles & Access

### Roles and access

Role Code	Role Description	Explanation
ZR_RCS_CA_M55	IMEP - Integrated Manufacturing & Energy Performance	Gives access to queries & workbooks IMEP (Manufacturing & Energy reports)
ZBI_RCS_IMEP_A01	IMEP - Integrated Manufacturing & Energy Performance	Gives access to InfoArea IA_FMCO_CO_IMEP* and all authorization relevant objects except <ul style="list-style-type: none"> <li>• GBU (CPFCTR1_2)</li> <li>• Plant (C_PLANT)</li> </ul> Authorization object ZBI_IMEP
ZR_RCS_CA_M551	IMEP - Upload Data - Non-SAP Plant ZIMEP_FILE	Gives access to transaction ZIMEP_FILE which allows IMEP Flat Files upload. (same logic than for P&L / role ZR_RCS_CA_M432)

### Authorization objects

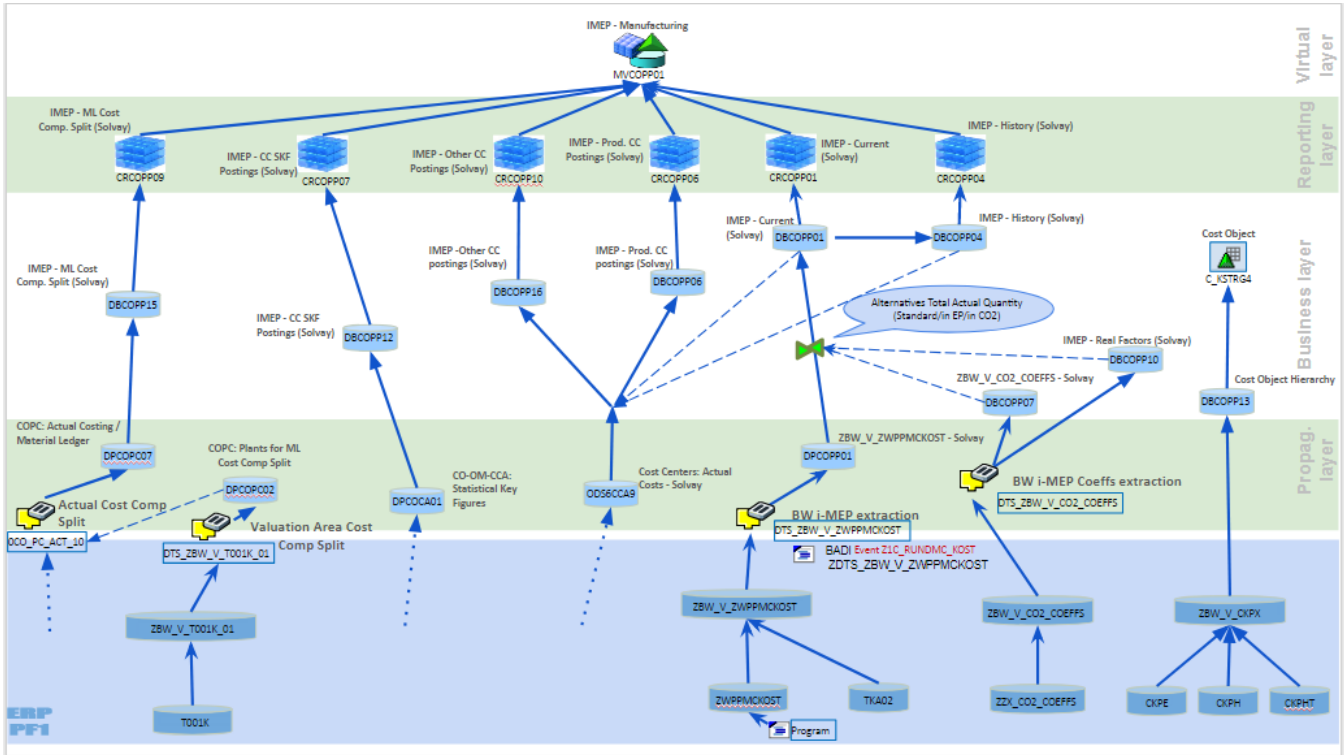
List of authorization objects mandatory for the application.

Authorization object	Explanation
GBU (CPFCTR1_2)	ZR_*_CA_P05
Plant (C_PLANT)	ZR_*_CA_P02 ZR_7866_CA_P02 => Plant 7866 - Chalampé (ex 7027) - (Cie ZFR9) ZR_TOUT_CA_P02 => All Plants "Solvay"
Company (C_COMPCDE)	<del>ZR_*_CA_P04</del> Role ZBI_RCS_IMEP_A01 already gives full access

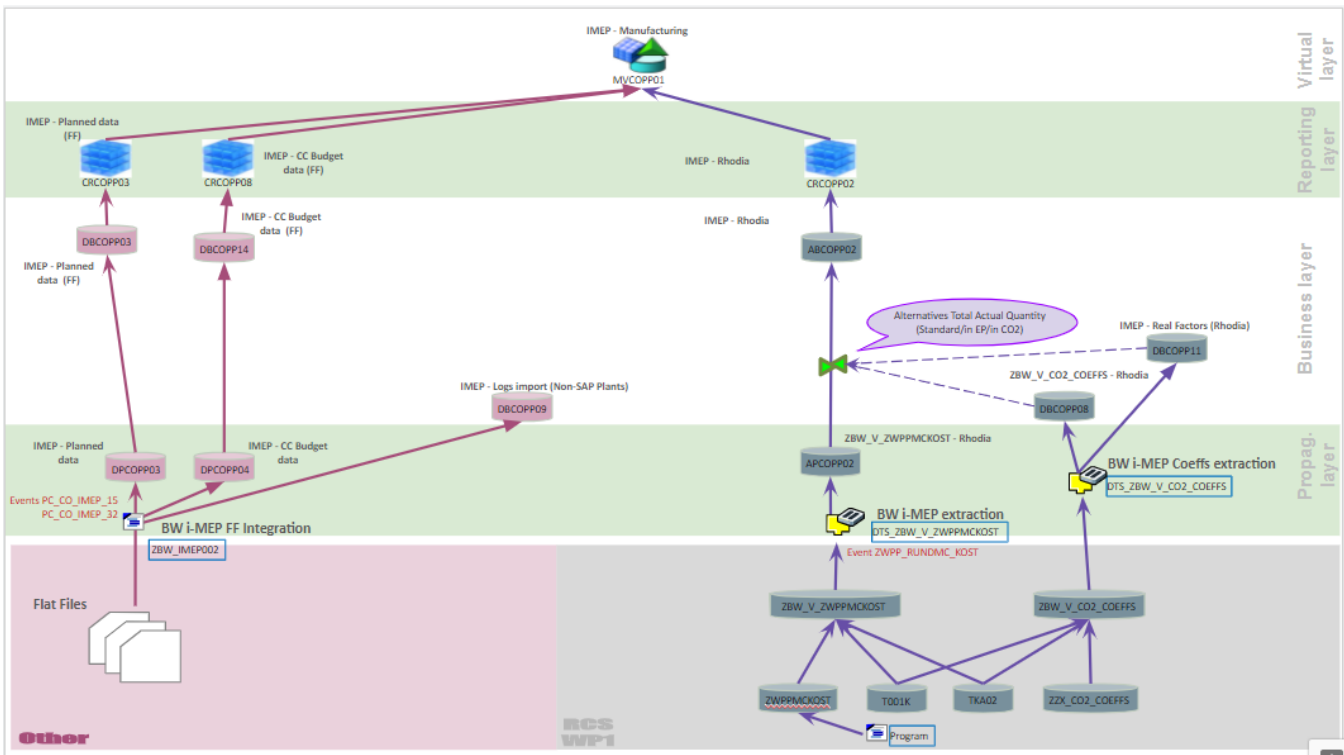
See also file maintained by Authorization team : BW Catalog of Roles / link: [https://drive.google.com/open?id=10GEfKYqrT1eeTO\\_uHYAheL1GX7L5y\\_pvH0KQU64qh5l](https://drive.google.com/open?id=10GEfKYqrT1eeTO_uHYAheL1GX7L5y_pvH0KQU64qh5l)

### Dataflow overview

[https://drive.google.com/file/d/1rWy33BWhh\\_83uoRCAGYnVPSjla2ib2y0LcR1FJywkKs/view](https://drive.google.com/file/d/1rWy33BWhh_83uoRCAGYnVPSjla2ib2y0LcR1FJywkKs/view)



Flat Files & WP1



Functional and Technical rules on Workbench + Reporting  
 Rules & Explanations  
 Source tables

## Table ZWPPMCKOST / i-MEP extraction table

This table exists on both systems PF1/WP1, but the structure is slightly different.

Following additional fields exists for PF1 table, but not for WP1 table : append ZWPPMCKOST\_EXTRA

Process Chain	Code
Code établissement DSI	ETABL
Code édition	EDITI
Libellé de la ligne d'édition	LIBLI
Type: Fix/Var/Dep	FVD
Cost collector for production process PROCNR	PKOSA
Material Ledger Cost	MLWRT
Material Ledger Variable Cost	ML_VC
Material Ledger Fixed Cost	ML_FC
Material Ledger Dependencies Cost	ML_DEP
Material Ledger Unit Cost	ML_UCOST

This table is filled via program XXX and contains only the values for the previous period (The table is emptied before each loading)

## Table ZZX\_CO2\_COEFFS / Energy and CO2 Emission Coefficients

This table exists on both systems PF1/WP1, and is filled manually by Energy Carbon team

## Table TKKH2 / Origin Group Texts in CO Object

This table exists on system PF1 and contains texts for Origin Group.

### View ZBW\_V\_TKKH2 / Origin Group Texts

This view exist on system PF1 and references table:

- TKKH2 / Text Table for Origin in CO Object

View contains Texts associated to Origin Group.

View is filtered on Controlling Area = CHEF, Origin Type = 02 and Language = English.

### View ZBW\_V\_CKPX / Cost Objects Hierarchies

This view exist on system PF1 and references tables:

- CKPE / CO-PC Cost Object Hierarchy: Individual Objects
- CKPH / Master Record: Cost Object ID Number
- CKPHT / Texts for CKPH

View contains all levels of Cost Object Hierarchy as attributes, as well as the associated texts.

~~View is filtered on CKPHT Language = English. (obsolete)~~

~~Tables are filled from table KKPHIE. (To be confirmed)~~

### View ZBW\_V\_ETABR3 / Establishment Texts

This view exist on system PF1 and references tables:

- ZZRETABR3 / R3 establishment
- ZZRETAB / Establishment
- ZZRSITE / Site

View contains Texts associated to R/3 Establishments.

## At datasource level (PF1/WP1)

For PF1 only:

- DataSource DTS\_ZBW\_V\_TKKH2, based on view ZBW\_V\_TKKH2, returns Origin Group Texts.
- DataSource DTS\_ZBW\_V\_CKPX, based on view ZBW\_V\_CKPX, returns Cost Object Attributes & Texts.

- DataSource DTS\_ZBW\_V\_ETABR3, based on view ZBW\_V\_ETABR3, returns R/3 Establishment Texts.

Datasource : DTS\_ZBW\_V\_ZWPPMCKOST based on view ZBW\_V\_ZWPPMCKOST

## Controlling Area (0CO\_AREA)

The controlling area is unique on PF1 ( value CHEF), but not on WP1 ( Z006, Z025, Z026...)

The controlling Area is not available on ECC side specific tables, but, in order to match the BI referential, this information is necessary to get referential attribut and texts (example 'Cost Center' C\_COSTCTR, 'Profit Center' C\_PFT\_CTR)

To get the information extractor are based on specific view with follow the business rule given :

- A plant belongs to a single company code (link found in table T001K where 'Valuation Area' (BWKEY) corresponds to the plant (WERKS)
- A company code belongs to a single controlling area (link found in table TKA02 / field 'Business Area' (GSBER) is always empty)

## Cost Component Structure (0CCOMPSTRUC)

The Cost Component Structure id is not unique on PF1 (on WP1, only id Z1 is used), and the id is not part of source table ZWPPMCKOST.

The append ZEXTRA\_FIELDS has been added to extract structure of the data source (ZOXDF10019). Fields belonging to the append are field within class ZDTS\_ZBW\_V\_ZWPPMCKOST.

To get the information :

- by default set id to 'Z1' except for exception managed in table TCK07 'Costing Variants for Organizational Units'
- Exceptions for certain company codes (BUKRS)
  - ignore value '++++'
  - keep only one valid record by company code (the latest)

## Cost Element Texts (0COSTELMNT) & Statistical Key Figure (0STKEYFIG)

Some Cost Elements do not fit the standard format for this Master Data - coded on 6 characters, they stand for Statistical Key Figures that are not used.

Because these Cost Elements do not exist in hierarchy CHEFXCS-ALL, values for attributes C\_CELTHX1/2/3/4/5 are collected through Flat File flow based on DataSource DTS\_FMCO\_0COSTELMNT\_01.

Statistical Key Figures are loaded using generic datasources 0STKEYFIG\_ATTR (Attributes) and 0STKEYFIG\_TEXT (Texts).

Texts from Statistical Key Figures are then copied in Cost Element texts.

Generic datasources exist in SOLVAY PF1 Dataflow only.

## At business level (WBP)

### GBU (CPFCTR1\_2)

The GBU available for reporting is BFC Global Business Unit (CPFCTR1\_2)

- For RCS WP1 data, the GBU is taken from the Profit Center (Navigational attribut 0PROFIT\_CTR\_\_CPFCTR1\_2)
- For Solvay PF1 data, the GBU is calculated at Business Level following below rule

**Case 1:** Profit Center (0PROFIT\_CTR) & Company Code (C\_COMPCDE) are filled

Case 1a: Profit Center is 10 characters long + starting with 'F' + plant is filled

- Concatenate Profit Center, Company Code, Plant
- Read MasterData Technical Business Area (C\_TECHBA) and get GBU (CPFCTR1\_2)

Case 1b: Profit Center on 5 positions starting by 'D'

- Concatenate '00000', Profit Center, Company Code
- Read MasterData Technical Business Area (C\_TECHBA) and get GBU (CPFCTR1\_2)

**Case 2 :** Plant (C\_PLANT) & Material (C\_MATPNT2) are filled

- Read MasterData Material Plant (C\_MATPNT2) and get Profit Center (0PROFIT\_CTR)
- Then apply Case 1a and Case 1b

**Case 3:** Controlling Area (0CO\_AREA), Cost Center (C\_COSTCTR) are filled

- Read MasterData Cost Center (C\_COSTCTR) and get GBU (CPFCTR1\_2)

## Exclude activity and Balancing movements (C\_EXACBMO)

The flag is set to 'X' when :

- cost element, first 2 positions = '98'.
- index 1 = '9' and origin, first 2 positions = 'KL'.

```
"Set flag activity and balancing movements exclusion
IF <result_fields>-costelmnt(2) = '98'.
  <result_fields>-/bic/c_exacbmo = 'X'.
ELSEIF <result_fields>-/bic/c_index1 = 9
  AND <result_fields>-/bic/c_origin(2) = 'KL'.
  <result_fields>-/bic/c_exacbmo = 'X'.
ENDIF.
```

This rule is settled in transformation at Business Level for SOLVAY PF1 only

The flag is set to 'P' (Produced Component) when Index1 = 3 and Origin exists as an Index1 = 1 Material in Propagation level.

This allows users to filter out lines where a component of a Material already exists as a Material, to avoid counting the associated key figures twice.

This rule is settled in transformation at Business Level for both SOLVAY PF1 and RCS WP1.

### Material Ledger Costs Split (K\_MLWRT)

For SOLVAY PF1 (DBCOPP01/04) and Flat Files (DBCOPP03), Material Ledger Costs are split between 3 components:

- Material Ledger Fixed Costs (K\_ML\_FC)
- Material Ledger Variable Costs (K\_ML\_VC)
- Material Ledger Dependencies (K\_ML\_DEP)

From Flat File, for index1 = 3 or index1 = 9, we check that K\_MLWRT is not null.

At all times,  $K\_MLWRT = K\_ML\_FC + K\_ML\_VC + K\_ML\_DEP$ .

The same split has been added to RCS WP1 (DBCOPP02/05) for MultiProvider assignment, based on Cost Component Group 0CCOMPGRP.

### Origin Split (C\_ORIGIN)

In DBCOPP01/04 (SOLVAY PF1), Origin details have been split between 5 infoObjects:

- Origin Activity Type (C\_ORICACT)
- Origin Cost Center (C\_ORICCTR)
- Origin Order (C\_ORICORD)
- Origin WBS Element (C\_ORICWBS)
- Origin Material (C\_ORIMAT)

Their value is dependent on the Index1 value and C\_ORIGIN structure:

- For index1 = 1 or 3, C\_ORIMAT = C\_ORIGIN+12(18). For index1 = 5 or 7, it is the same but first we check that LOGSYS/C\_ORIGIN exists as C\_MATNR2.
- For index 1 = 5 or 7, C\_ORICACT = 0ACTTYPE (Activity Type) and C\_ORICCTR = C\_COSTCTR (Cost Center)
- For index1 = 9, depending on the first 2 characters of C\_ORIGIN:
  - When 'KL', C\_ORICCTR = C\_ORIGIN+6(10) / C\_ORICACT = C\_ORIGIN+16(6)
  - When 'KS', C\_ORICCTR = C\_ORIGIN+6(10)
  - When 'OR', C\_ORICORD = C\_ORIGIN+2(12)
  - When 'PR', C\_ORICWBS = C\_WBS\_EL2 where C\_WBS\_EL2\_C\_OBJNR = C\_ORIGIN+0(10)
  - When '00', C\_ORIMAT = C\_MATNR2

The same split has been applied to DBCOPP02/05 (RCS WP1), with simplified rules:

- For Index1 = 1 or 2 or 3, C\_ORIMAT = C\_ORIGIN+12(18).
- For index 1 = 5, C\_ORICACT = 0ACTTYPE (Activity Type) and C\_ORICCTR = C\_COSTCTR (Cost Center)

### Origin Texts

Origin Texts are collected from PF1 and WP1. Loads are included in Main Chains and thus happen daily on Current Month (and Previous Month from 01 to 08 of each month).

Because of a large amount of missing texts, a corrective DTP runs every day to collect texts from other Master Data, once more based on the first 2 characters of C\_ORIGIN:

- When 'KL', Short Text from C\_COSTCTR & ' / ' & Medium Text from 0ACTTYPE
- When 'KS', Medium Text from C\_COSTCTR
- When 'OR', Short Text from C\_COORDER
- When 'PR', Medium Text from C\_WBS\_EL2

- When '00', Medium Text from C\_MATNR2

There is also a special case where text exists but must be replaced: If INDEX1 = 5 and Text begins with 'ATY', apply the same text as 'KL' Origins.

## Origin Group (C\_HRKFT)

Origin Group is collected as a subchain of CO Key Subnumber (C\_COKSNB)

Origin Group Texts are collected from SOLVAY PF1 by datasource DTS\_ZBW\_V\_TKKH2.

Origin Group is also collected as attribute of C\_ORIMAP3, infoobject created in reference to C\_MATPNT3 and identical to C\_ORIMAT in our data. That Origin Group, C\_ORIMAP3\_\_C\_HRKFT, is collected from SOLVAY PF1 by datasource DTS\_MBEW\_01.

## Total Actual Quantity Conversion

Total Actual Quantity is converted to fill the values of the following attributes of Activities DSOs (DBCOPP04 for SOLVAY PF1, DBCOPP05 for RCS WP1):

- Total Actual Quantity Standard (K\_ACQTSTD)
- Total Actual Quantity in EP (K\_ACQTYEP)
- Total Actual Quantity in Scope 1 in CO2 (K\_AQT1CO2)
- Total Actual Quantity in Scope 2 in CO2 (K\_AQT2CO2)
- Total Actual Quantity in Scope 3 in CO2 (K\_AQT3CO2)

Conversion is based on *Real Factors* DSOs (DBCOPP10 for PF1, DBCOPP11 for WP1) and *ZBW\_V\_CO2\_COEFFS* DSOs (DBCOPP07 for PF1, DBCOPP08 for WP1).

If coefficient *Real Factor Conversion* (K\_RFACONV) exists in *Real Factors* DSO, TAQ Standard and TAQ in EP are calculated using that coefficient. Otherwise, they are calculated using *Local To Standard UoM Conversion* (K\_UOMCONV) and *Primary Energy Coefficient* (K\_ENGCOEF), respectively, from *ZBW\_V\_CO2\_COEFFS* DSO.

TAQ in CO2 are always calculated using coefficients *CO2 Emission Scope* (K\_CO2EMI1/2/3) from *ZBW\_V\_CO2\_COEFFS* DSO if they exist.

## Master Data Cost Element (0COSTELMNT)

CHEFXCS-ALL Hierarchy Levels are stored in Master Data Cost Element, in attributes C\_CELTHX1 to C\_CELTHX5.

Levels are stored as follow:

Attribute	Hierarchy Level	Example
C_CELTHX1	2	XCS-SELL
C_CELTHX2	3	XCS-SELLA
C_CELTHX3	4	XCS-SELLB
C_CELTHX4	5	XCS-SELLC
C_CELTHX5	6	XCS-SALE01

Hierarchy Level 1 is always "XCS-ALL" and thus not stored.

## Dependencies with other applications

(None known)

## Data loadings

### Info providers and objects loaded

### Global Filters (C\_GLBFLT) used in Chains

Stream	Rule	Explanation
IMEP	RCS_LOAD	<p>Period (YYYYPPP) to load, RCS. NO_LOAD to avoid loadings</p> <p><b>Counter 1</b> = "Current Period" used by chains PC_CO_IMEP_01/20.</p> <p><b>Counter 2</b> = "Previous Period" used by chains PC_CO_IMEP_08/25.</p> <p>Do not change active flag (Active = Y)</p> <p>This variable is used in decision block</p>

IMEP	RCS_DEL	<p>Period (YYYYPPP) to delete, RCS DSO/Cube. NO_DEL to avoid</p> <p><b>Counter 1</b> = "Current Period" used by chains PC_CO_IMEP_01/20.</p> <p><b>Counter 2</b> = "Previous Period" used by chains PC_CO_IMEP_08/25.</p> <p>Do not change active flag (Active = Y)</p>
IMEP	RCS_HISTO	<p><b>Counter 1</b> = Number of Year to keep in all DSOs/Cubes RCS</p> <p><b>Counter 2</b> = Delete all data in all DSOs/Cubes RCS older than</p> <p>The counter 1 is entered manually, it is a number of years to keep in all DSOs and Cubes.</p> <p>If '3' is entered, 3 full years + current year are kept.</p> <p>The counter 2 is determined within program ZBW_IMEP001 depending of the loaded period and the counter 1.</p> <p>Example : we are the 01/08/2016, the period 007.2016 is loaded. As the counter 1 is '3', the calculated counter 2 is 001.2013.</p> <p>All period previous to 001.2013 will be deleted via the main process chain</p>
IMEP	SOLV_LOAD	Same explanation as RCS_LOAD
IMEP	SOLV_DEL	Same explanation as RCS_DEL
IMEP	SOLV_HISTO	Same explanation as RCS_HISTO
IMEP	FF_DATA	<p><b>Counter 1</b> = Input filename for ZBW_IMEP002 program.</p> <p><b>Counter 2</b> = Store actual delta queue of running process chain PC_CO_IMEP_15.</p> <p><b>Counter 3</b> = Total counter for ZBW_IMEP002 program file loading.</p> <p><b>Counter 4</b> = Version to be updated by program ZBW_IMEP002</p> <p><b>Counter 5</b> = List of Plants to be updated by program ZBW_IMEP002 - Format: "PL1/PL2/PL3/...", up to 120 characters</p> <p><b>Counter 6</b> = Fiscal Year to be updated by program ZBW_IMEP002</p> <p><u>Data in counter 4 to 6 are read in program ZBW_IMEP003 to define Selective Deletion perimeter before import.</u></p>

## ABAP Programs used in Chains

Program	Variant	Explanation
ZBW_DEL DIM	ZVAR_IME P_01 ZVAR_IME P_02 ZVAR_IME P_03 ZVAR_IME P_04 ZVAR_IME P_05 ZVAR_IME P_06	Existing program, reused to clean cube dimensions. It delete unused dimension elements
ZBW_IMEP 004  (Obsolete)	ZVAR_DEL _RCS ZVAR_DEL _SOLV ZVAR_OBS _RCS ZVAR_OBS _SOLV ZVAR_PER _RCS ZVAR_PER _SOLV	<p>Program created for the projet to :-</p> <ul style="list-style-type: none"> <li>■ Determine period to load from source system (and period to delete, obsolete periods)</li> <li>■ Delete exercice/period (previously to new load)</li> <li>■ Delete obsolete periods (to keep a constant perimeter of data)</li> </ul>
ZBW_IMEP 002		<p>Program created for the project to allow users to load flat files to integrate additional IMEP data.</p> <p>Program is not used in Process Chain, but launches event PC_CO_IMEP_15 or PC_CO_IMEP_32, starting PC of the same name.</p>

ZBW_IMEP 003	ZVAR_DEL _RCS1 ZVAR_DEL _RCS2 ZVAR_DEL _RCS3 ZVAR_DEL _RCS4 ZVAR_DEL _SOLV1 ZVAR_DEL _SOLV2 ZVAR_DEL _SOLV3 ZVAR_DEL _SOLV4 ZVAR_OBS _RCS1 ZVAR_OBS _RCS2 ZVAR_OBS _SOLV1 ZVAR_OBS _SOLV2 ZVAR_PER _RCS1 ZVAR_PER _RCS2 ZVAR_PER _SOLV1 ZVAR_PER _SOLV2  ZVAR_DEL _FF1 ZVAR_DEL _FF2	Program created for the projet to : <ul style="list-style-type: none"> <li>• Determine period to load from source system (and period to delete, obsolete periods)</li> <li>• Delete exercise/period (previously to new load)</li> <li>• Delete obsolete periods (to keep a constant perimeter of data)</li> </ul> Program replaces ZBW_IMEP001 and takes into account whether Current Month M (variants XXX1/XXX3) or Previous Month M-1 (variants XXX2/XXX4) is being reloaded.  Variables ZVAR_DEL_FF* used for Flat File imports, modifying filters so that data is deleted in Budget DSOs and Cubes depending on Version C_VERSF, Fiscal Year 0FISCYEAR and Plant C_PLANT rather than Period 0FISCPER.  Two instances of the program cannot run at the same time, to avoid incorrect data initialization in C_GLBFILTER.
ZBW_IMEP 004	ZVAR_COP P01 ZVAR_COP P02	Program created for the project to delete non-current data (M-2 and older) from InfoProviders. It is only used as of now to clear DBCOPP01 /CRCOPP01 after the historical data has been sent to history flow (DBCOPP04) for SOLVAY PF1 and to clear DBCOPP02/CRCOPP02 after the hstorical data has been sent to history flow (DBCOPP05) for RCS WP1.

**Further explanations for program ZBW\_IMEP001**

**IMEP - Options for IMEP loading**

If 'X', nothing is done.  
The variables in C\_GLBFILTER are not changed.  
This option is helpful to use the main process chain for initialization or reloadings.

If Initialization is selected, below parameters are ignored

Initialization?

If 'Solvay', only Solvay's variables are changed  
Stream 'IMEP', rules 'SOLV\*'

If 'RCS', only RCS's variables are changed  
Stream 'IMEP', rules 'RCS\*'

Which flow is concerned ?

Solvay  
 RCS

Which action?

1) Get period to load  
From  to , load previous period.

2) Delete period

3) Delete obsolete periods

To be filled for action 2) or 3)

DSOs/Cubes list

Display Application Log

**Action 1)**  
If we are D1 to D4, the period determine is the previous one  
Example 01/08/2016 => period 007.2016  
Variables updated : Stream 'IMEP'  
- rules 'RCS\_LOAD' or 'SOLV\_LOAD'  
- rules 'RCS\_DEL' or 'SOLV\_DEL'  
- rules 'RCS\_HISTO' or 'SOLV\_HISTO', counter '002'

**Else NO\_LOAD**  
Variables updated : Stream 'IMEP'  
- rules 'RCS\_LOAD' or 'SOLV\_LOAD' with NO\_LOAD  
- rules 'RCS\_DEL' or 'SOLV\_DEL' with NO\_DEL  
- rules 'RCS\_HISTO' or 'SOLV\_HISTO', counter '002', with NO\_HISTO

**Action 2)**  
Delete period(s) reading variable Stream 'IMEP' / rules 'RCS\_DEL' or 'SOLV\_DEL'  
And lists of DSOs/Cubes entered in the selection screen

**Action 3)**  
Delete previous periods reading variable Stream 'IMEP' / rules 'RCS\_HISTO' or 'SOLV\_HISTO', and lists of DSOs/Cubes entered in the selection screen

**Further explanations for program ZBW\_IMEP002**

### IMEP - Loading of flat files

🔄 📄

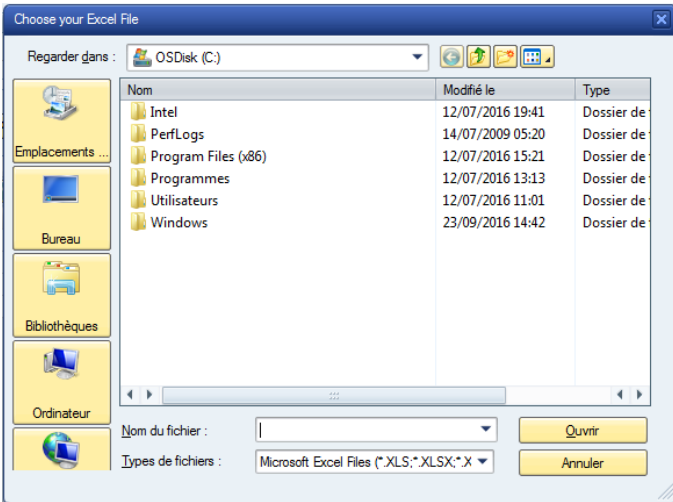
Import Budget  
 Import CC Postings

**Choose the file to load**  
 File to load

👤 Preview
📄 Check file
🕒 Load file
📜 History
✖ Exit

User must first indicate whether he is loading a Planned Data **Budget File** (Target: CRCOPP03, Event/Process Chain launched: PC\_CO\_IMEP\_15) or a Cost Center **Postings Budget File** (Target: CRCOPP08, Event/Process Chain launched: PC\_CO\_IMEP\_32). Only one type of file can be loaded at once, and both types have different format.

User can choose an Excel flat file from his local computer by using the "File to load" browser.



Once the file is chosen, the user can preview the content to be uploaded from his selected file by clicking on "Preview" icon.

Preview is color-coded: green entries are correct, while yellow ones return warnings and red ones return one or more errors.

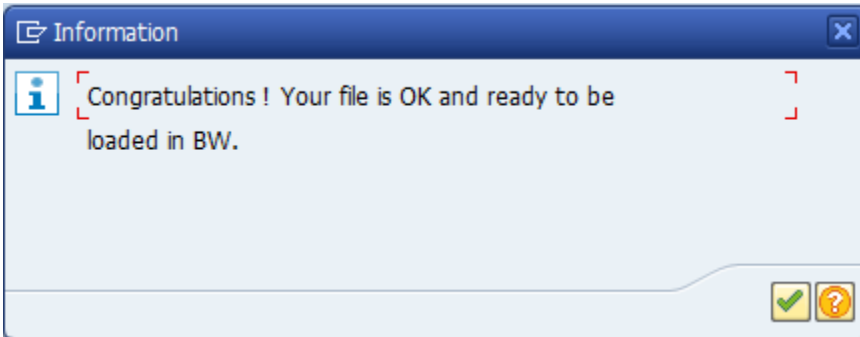
**Choose the file to load**  
 File to load

👤 Preview
📄 Check file
🕒 Load file
📜 History
✖ Exit

Versio...	Fisc...	Po...	I	Cost Object	Cost Element	Cost Center	Origin	Ite...	Curre...	Total Actual Qty
B18	2018	10	3	ST32410920	6090020100		100139	KG	EUR	100,000
B18	2018	10	3	ST32410920	6090020100		104462	KG	EUR	30,000
B18	2018	10	3	ST32410920	6090020303		101218	TO	EUR	7.047,000
B18	2018	10	3	ST32410920	6090020303		101580	TO	EUR	207,000
B18	2018	10	3	ST32410920	6090020500		103474	M3	EUR	71.039,000-
B18	2018	10	3	ST32410920	6096020000		103055	KG	EUR	130.885,000

Once the file is chosen, the user can start the content checking of the file by clicking on "Check file" icon.

If errors and warnings exists, they will be listed with a description of the error at the end of each line.

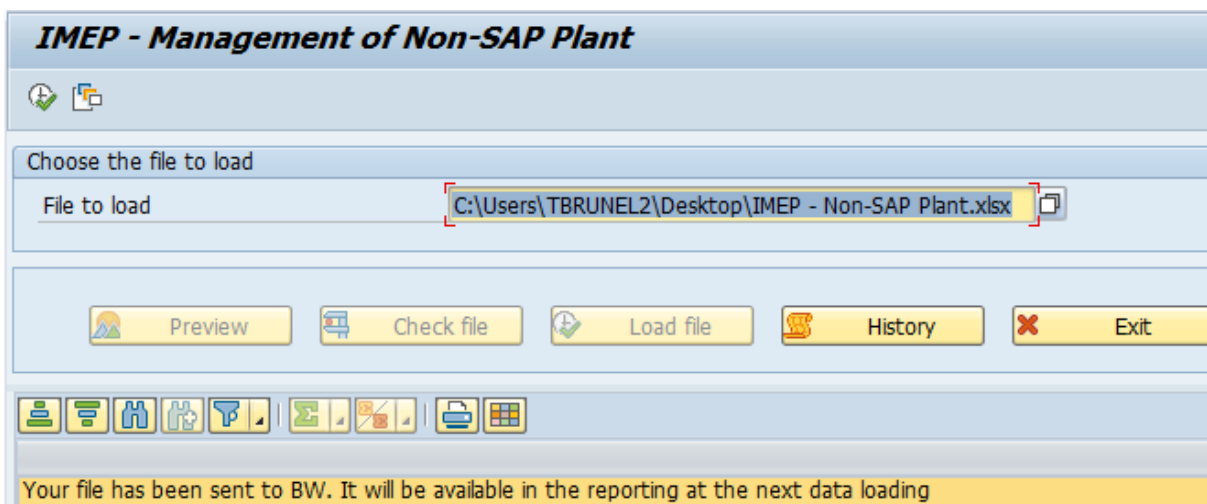
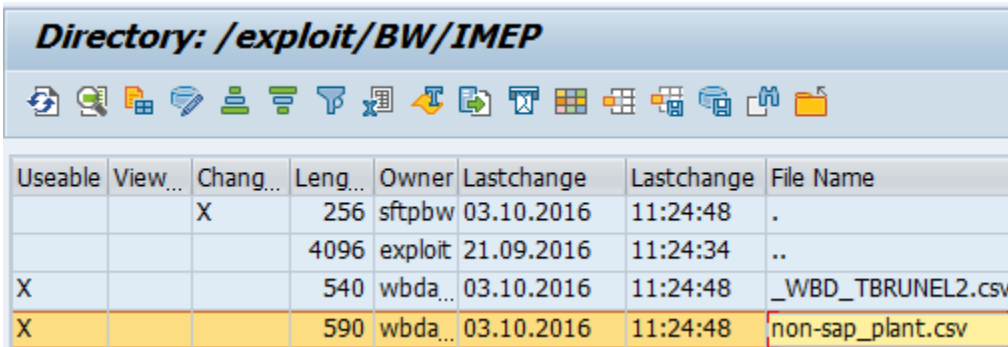


Once the file content is checked and all errors corrected, the user can load the file to BW application server (AL11) and raise the event associated with the type of import they chose by clicking on "Load file" icon .

The event PC\_CO\_IMEP\_15 triggers the process chain PC\_CO\_IMEP\_15 - "IMEP: META - T - Main (Flat Files)".

The event PC\_CO\_IMEP\_32 triggers the process chain PC\_CO\_IMEP\_32 - "IMEP: META - T - Main (CC postings) (Flat Files)".

Either process chain will load the user's file data into IMEP BW application.



User can view the history of loaded files by clicking on "History" icon.

### IMEP - Management of Non-SAP Plant

Choose the file to load

File to load: C:\Users\TBRUNEL2\Desktop\IMEP - Non-SAP Plant.xlsx

Preview Check file Load file History Exit

Name of file	Start Time	End Time	End Date	Start Date	Coun...	User	BW System
IMEP - Non-SAP Plant.xlsx	17:56:04	00:00:00		03.10.2016	11	TBRUNEL2	WBD
IMEP - Non-SAP Plant.xlsx	17:52:14	00:00:00		03.10.2016	10	TBRUNEL2	WBD
IMEP - Non-SAP Plant.xlsx	17:37:45	00:00:00		03.10.2016	9	TBRUNEL2	WBD
IMEP - Non-SAP Plant.xlsx	16:53:39	00:00:00		03.10.2016	8	TBRUNEL2	WBD

The user can exit the program by clicking on "Exit" icon.

#### Source Code

Report ZBW\_IMEP002 contains several distinct forms:

Interface

Selection screen.

Import File

f200-import\_file: Import the XLS file from user's workstation.

f210-upload\_excel: Convert the XLS file in Internal table.

f220-check\_file: Check content of the file as follow, only for Planned Data Budget Files:

For more details, see file ZWPPMCKOST\_table structure & contents\_QF1.xlsx. (obsolete)

- BUSINESS RULE 1. **VERSION VALUE** - IMEP\_BR1 (Rejection Code)  
BFR06 (Budget Forecast) or By (Yearly Budget, where yy between 00 and 99)
- BUSINESS RULE 2. **FISCAL YEAR VALUE** - IMEP\_BR2  
Year, between 1900 and 2999
- BUSINESS RULE 3. **PERIOD VALUE** - IMEP\_BR3  
Month, between 01 and 12
- BUSINESS RULE 4. **INDEX VALUE** - IMEP\_BR4  
Index is 1 (Produced material), 3 (BOM Component) or 9 (SKF/Direct Posting)
- BUSINESS RULE 5. **COST OBJECT EXISTS** - IMEP\_BR5  
Check DSO *DBCOPP13* for Cost Object. Empty Cost Object is accepted too.
  - BUSINESS RULE 5.2. **MATCHING COST OBJECT AND PLANT** - IMEP\_BR5\_2  
Check DSO *DBCOPP13* for Plant with Imported Cost Object. The Plant in the DSO must match imported Plant.
- BUSINESS RULE 6. **COST ELEMENT EXISTS** - RK14\_2  
Check Master Data *OCOSTELMNT* for Cost Element with Controlling Area *CHEF* and Level 1 Hierarchy *XCS-ALL*
- BUSINESS RULE 7. **COST CENTER**
  - BUSINESS RULE 7.1. **COST CENTER MANDATORY FOR INDEX 9** - RK3\_1
  - BUSINESS RULE 7.2. **COST CENTER EXISTS** - RK3\_2  
Check Master Data *C\_COSTCTR* for Cost Center with Controlling Area *CHEF*
- BUSINESS RULE 8. **ORIGIN**
  - BUSINESS RULE 8.1. **ORIGIN MANDATORY FOR INDEX 3** - IMEP\_BR8\_1
  - BUSINESS RULE 8.2. **ORIGIN EXISTS (as MATERIAL)** - IMEP\_BR8\_2  
Check Master Data *C\_MATNR2* for Origin with Source System *PF1\_020*
- BUSINESS RULE 9. **UNIT EXISTS** - RD12\_2  
Check Master Data *OUNIT* for Unit
- BUSINESS RULE 10. **CURRENCY EXISTS** - RD11\_2  
Check Master Data *OCURRENCY* for Currency.
- BUSINESS RULE 11. **KEY FIGURES VALUES** - IMEP\_BR11  
For index 3 and 9, check that Material Ledger Costs are not null (Sum of Fixed Costs, Variable Costs and Dependencies)
- BUSINESS RULE 12. **DUPLICATE ENTRIES** - RD14
- BUSINESS RULE 16: **KEY FIGURES ARE NUMERIC** - IMEP\_BR16  
Key figures only contains the following characters: '0123456789.'
- BUSINESS RULE 17: **MATERIAL EXISTS** - RD10  
Check Master Data *C\_MATPNT2* for Material with imported Plant and Cost Object.

f230-check\_file\_cc: Check content of the file as follow, only for Cost Center Postings Budget Files:

Info: Business Rules sharing the same name are identical in both "check\_file" forms.

- BUSINESS RULE 1. **VERSION VALUE** - IMEP\_BR1 (Rejection Code)  
BFR06 (Budget Forecast) or Byy (Yearly Budget, where yy between 00 and 99)
- BUSINESS RULE 2. **FISCAL YEAR VALUE** - IMEP\_BR2  
Year, between 1900 and 2999
- BUSINESS RULE 3. **PERIOD VALUE** - IMEP\_BR3  
Month, between 01 and 12
- BUSINESS RULE 6. **COST ELEMENT EXISTS** - RK14\_2  
Check Master Data *OCOSTELMNT* for Cost Element with Controlling Area *CHEF* and Level 1 Hierarchy *XCS-ALL*
- BUSINESS RULE 7. **COST CENTER**
  - BUSINESS RULE 7.2. **COST CENTER EXISTS** - RK3\_2  
Check Master Data *C\_COSTCTR* for Cost Center with Controlling Area *CHEF*
  - BUSINESS RULE 7.3. **PARTNER COST CENTER EXISTS** - IMEP\_BR7\_3  
Check Master Data *C\_COSTCTR* for Cost Center with Controlling Area *CHEF*
  - BUSINESS RULE 7.4. **MATCHING COST CENTER AND PLANT** - IMEP\_BR7\_4  
Check Master Data *C\_COSTCTR* with Controlling Area *CHEF* and imported Cost Center. The attribute *C\_RPLANT* must match imported Plant.
- BUSINESS RULE 9. **UNIT EXISTS** - RD12\_2  
Check Master Data *OUNIT* for Unit
- BUSINESS RULE 10. **CURRENCY EXISTS** - RD11\_2  
Check Master Data *OCURRENCY* for Currency.
- BUSINESS RULE 12. **DUPLICATE ENTRIES** - RD14
- BUSINESS RULE 13: **PARTNER ORDER EXISTS** - IMEP\_BR13  
Check Master Data *C\_COORDER* for Cost Order with Source System *%F1\_020*
- BUSINESS RULE 14: **PARTNER WBSE EXISTS** - RK27\_2  
Check Master Data *C\_WBS\_EL2* for WBS Element with Source System *%F1\_020*
- BUSINESS RULE 15: **DEBIT/CREDIT INDICATOR IS SET** - IMEP\_BR15  
Debit/Credit Indicator is either 'S' or 'H'
- BUSINESS RULE 16: **KEY FIGURES ARE NUMERICS** - IMEP\_BR16  
Key figures only contains the following characters: '0123456789.'

Program Output

f300-output\_preview: Generate ALV grid to show Converted data from Excel.

f310-output\_check: Generate ALV grid to show Converted data from Excel after check.

Program Load

f400-load\_pchain: Check if process chain is already in progress.

f413-csv\_file\_data: Import Customer file in ALL11.

- Filename consumed by process chain PC\_CO\_IMEP\_15 is hardcoded in this form: "/exploit/BW/IMEP/IMEP\_flat\_file.csv".
- Filename consumed by process chain PC\_CO\_IMEP\_32 is hardcoded in this form: "/exploit/BW/IMEP/IMEP\_cc\_flat\_file.csv".
- Flat file integrated manually by user, is saved as follow: '/exploit/BW/IMEP/' w\_file '\_' sy-sysid '\_' sy-uname '.csv'.  
Where *w\_file* is the filename on user's local pc, *sy-sysid* is the BW environment and *sy-uname* is the user name which is running the program.

f423-filename\_data: Update Global filter master data with new file name.

f433-savelog\_data: Update log after loading (DSO DBCOPP09 - "IMEP - Log Import (Non-SAP Plant) ( Direct Update )").

f440-finish\_message: Pop - up message once the program's operations are complete .

f453-send\_email\_data: Send an email after data loading.

f463-delete-obsolete-data: Selective deletion of data in either DPCOPP03/DBCOPP03/CRCOPP03 or DPCOPP04/DBCOPP14/CRCOPP08 based on *Version* (*C\_VERSF*) and *Fiscal Period* (*0FISCPER*).

Program Log

f500-display\_log: Display log.

**Further explanations for program ZBW\_IMEP003**

## IMEP - Options for IMEP loading



If Initialization is selected, below parameters are ignored

Initialization?

Which flow is concerned ?

- Solvay  
 RCS  
 Flat File

For Solvay and RCS, Selective Deletion is done on a given Period.  
For Flat Files, the Version, the Fiscal Year (for Budget Forecasting) and the list of Plants in the imported file are taken into account instead.

Which action?

- Update current period     Update previous period  
 1) Get period to load  
 From  to , load previous period.  
 From  to , load current period.  
 2) Delete period  
 3) Delete obsolete periods

Only a single period is loaded/deleted at a time, either current period M or previous period M-1.  
Program does not run if executed outside of the limits defined for the period selected ( From \_\_ to \_\_ )

The same principle is applied for Actions 2 and 3, everything else is functionally identical to program ZBW\_IMEP001.

To be filled for action 2) or 3)

DSOs/Cubes list

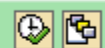
Display Application Log

Program reads Global Filter to define Selective Deletion Perimeter. Depending on selected flow (and, for RCS and Solvay, selected period), Perimeter will be established reading different entries in Global Filter:

Stream	Rule	Counter	Global Filter Descri	Sign	Option	Low	Hight	Acti...
IMEP	FF_DATA	1	Input filename for ZBW_IMEP002 program			B19 upload file Rheinberg_V3_upload WBP.xlsx		Y
IMEP	FF_DATA	2	Store actual delta queue of running RSPC PC_CO_IMEP_15			0		Y
IMEP	FF_DATA	3	Total counter for ZBW_IMEP002 program file loading			156		Y
IMEP	FF_DATA	4	Version that will be updated in Budget DSOs/Cubes	I	EQ	B19		Y
IMEP	FF_DATA	5	List of Plants that will be updated in Budget DSOs/Cubes	I	EQ	RBAA/RBAB		Y
IMEP	FF_DATA	6	Fiscal Year that will be updated in Budget DSOs/Cubes	I	EQ	2019		Y
IMEP	RCS_DEL	1	Period (YYYYPPP) to delete, RCS DSO/Cube. NO_DEL to avoid	I	BT	2018010	2018010	Y
IMEP	RCS_DEL	2	Period (YYYYPPP) to delete, RCS (M-1)	I	BT	NO_DEL		Y
IMEP	RCS_HISTO	1	Number of Year to keep in all DSOs/Cubes RCS	I	EQ	6		Y
IMEP	RCS_HISTO	2	Delete all data in all DSOs/Cubes RCS older than	I	EQ	2012010		Y
IMEP	RCS_LOAD	1	Period (YYYYPPP) to load, RCS. NO_LOAD to avoid loadings	I	BT	2018010	2018010	Y
IMEP	RCS_LOAD	2	Period (YYYYPPP) to load, RCS (M-1)	I	BT	NO_LOAD		Y
IMEP	SOLV_DEL	1	Period (YYYYPPP) to delete, SOLVAY DSO/Cube. NO_DEL to avoid	I	BT	2018010	2018010	Y
IMEP	SOLV_DEL	2	Period (YYYYPPP) to delete, SOLVAY (M-1)	I	BT	NO_DEL		Y
IMEP	SOLV_HISTO	1	Number of Year to keep in all DSOs/Cubes Solvay	I	EQ	6		Y
IMEP	SOLV_HISTO	2	Delete all data in all DSOs/Cubes Solvay older than	I	EQ	2012010		Y
IMEP	SOLV_LOAD	1	Period (YYYYPPP) to load, SOLVAY. NO_LOAD to avoid loadings	I	BT	2018010	2018010	Y
IMEP	SOLV_LOAD	2	Period (YYYYPPP) to load, SOLVAY (M-1)	I	BT	NO_LOAD		Y

Further explanations for program ZBW\_IMEP004

## IMEP - Delete older data from Current flow



DSOs/Cubes

All DSOs and Cubes listed in the program variant will be cleared of all M-2 data and older, leaving only Current and Previous Month.

## Main Chains

### SAP events detail

PF1:

Z1C\_RUNDMC\_KOST for current month update

Z1C\_RUNDMC\_KOST\_PREV\_MTH for previous month update

WP1:

ZWPP\_RUNDMC\_KOST for current month update

ZWPP\_RUNDMC\_KOST\_PREV\_MTH for previous month update

Flat Files:

PC\_CO\_IMEP\_15 for every Budget update

PC\_CO\_IMEP\_32 for every CC Postings update

No chain runs on Sunday.

Process Chain	Code	Type	Frequency	Comments
IMEP: META - T - Current month (Solvay)	PC_CO_IMEP_01	MAIN	09 to 31	This chain is starting when event Z1C_RUNDMC_KOST is received from Solvay PF1. Global Filter IMEP/SOLV_LOAD/1 is used in the decision block. Usually starts around 0:30 (CET) <del>For info, job PF1 is ZWPPTOUKC, it runs for 1 hour, and starts at 4 am CET</del>
IMEP: META - T - Previous month (Solvay)	PC_CO_IMEP_20	MAIN	01 to 08	This chain is starting when event Z1C_RUNDMC_KOST_PREV_MTH is received from Solvay PF1. Global Filter IMEP/SOLV_LOAD/2 is used in the decision block. DBCOPP10 (Solvay Real Factors) is updated and activated in this PC only. Usually starts around 3:00 (CET) <del>For info, job PF1 is ZWPPTOUKC, it runs for 1 hour, and starts at 4 am CET</del>
IMEP: META - T - Current month (RCS)	PC_CO_IMEP_08	MAIN	01 to 31	This chain is starting when event ZWPP_RUNDMC_KOST is received from RCS WP1. Global Filter IMEP/RCS_LOAD/1 is used in the decision block. Usually starts around 1:00 (CET) <del>For info, job WP1 is xx, it runs for 1 hour 1/2, and starts at 3 am CET</del>
IMEP: META - T - Previous month (RCS)	PC_CO_IMEP_25	MAIN	01 to 08	This chain is starting when event ZWPP_RUNDMC_KOST_PREV_MTH is received from RCS WP1. Global Filter IMEP/RCS_LOAD/2 is used in the decision block. Usually starts around 3:00 (CET) <del>For info, job WP1 is xx, it runs for 1 hour 1/2, and starts at 3 am CET</del>
IMEP: META - T - Planned data for Budget (Flat Files)	PC_CO_IMEP_15	MAIN	Manually (Trigger)	This chain is starting when event PC_CO_IMEP_15 is received from ZBW_IMEP002 Program.
IMEP: META - D - Cost Object Hierarchy (DBCOPP13 /C_KSTRG4)	PC_CO_IMEP_26	MAIN	Daily	This chain is starting every day at 5:30 (CET)
IMEP: TXT - D - R3 Establishment	PC_CO_IMEP_27	MAIN	Daily	This chain is starting every day at 8:05 (CET)
IMEP: META - W - Standard Key Figure (Solvay)	PC_CO_IMEP_30	MAIN	Weekly	This chain is starting every Saturday at 8:00 (CET)
IMEP: META - T - Cost Center postings (Flat Files)	PC_CO_IMEP_32	MAIN	Manually (Trigger)	This chain is starting when event PC_CO_IMEP_32 is received from ZBW_IMEP002 Program.
IMEP: TD - M - Historical Data (Solvay)	PC_CO_IMEP_37	MAIN	Monthly	This chain is starting every 15th of the month at 1:00 (CET) M-2 Data is moved from CRCOPP01 to CRCOPP04
<del>IMEP: TD - M - Historical Data (RCS)</del>	<del>PC_CO_IMEP_38</del>	<del>MAIN</del>	<del>Monthly</del>	<del>This chain is starting every 15th of the month at 1:00 (CET) M-2 Data is moved from CRCOPP02 to CRCOPP06</del>
IMEP: TXT - W - Texts (RCS & Solvay)	PC_CO_IMEP_39	MAIN	Weekly	This chain is starting every Saturday at 5:00 (CET). It loads texts for C_ORIGIN.

## Sub Chains

Process Chain	Code	Type	Main chain	Comments
IMEP: MD - Referential & Conversion factors (Solvay)	PC_CO_IM EP_02	subchain	1	Data required for Business Rules
IMEP: TD - Delete period in DSOs (Current) (Solvay)	PC_CO_IM EP_03	subchain	1	Before loading a period, the same period has to be deleted from target DSOs. The same is done in cubes using a Delete Overlapping DTP after they are loaded.  Global Filter IMEP/SOLV_DEL/1 is used
IMEP: TD - Propagation (Current) (Solvay)	PC_CO_IM EP_04	subchain	1	Global Filter IMEP/SOLV_LOAD/1 is used to limit the InfoPackage
IMEP: TD - Business (Current) (Solvay)	PC_CO_IM EP_05	subchain	1	
IMEP: TD - Reporting (Current) (Solvay)	PC_CO_IM EP_06	subchain	1	
IMEP: MD - Texts (Solvay)	PC_CO_IM EP_07	subchain	1	This load could be done once a week or once a month
IMEP: MD - Referential & Conversion factors (RCS)	PC_CO_IM EP_09	subchain	8	Data required for Business Rules
IMEP: TD - Delete period in targets (Current) (RCS)	PC_CO_IM EP_10	subchain	8	Before loading a period, the same period has to be deleted from targets (DSO/Cubes)  Global Filter IMEP/RCS_DEL/1 is used
IMEP: TD - Propagation (Current) (RCS)	PC_CO_IM EP_11	subchain	8	Global Filter IMEP/RCS_LOAD/1 is used to limit the InfoPackage
IMEP: TD - Business (Current) (RCS)	PC_CO_IM EP_12	subchain	8	
IMEP: TD - Reporting (Current) (RCS)	PC_CO_IM EP_13	subchain	8	
IMEP: MD - Texts (RCS)	PC_CO_IM EP_14	subchain	8	This load could be done once a week or once a month
IMEP: TD - Propagation (Flat Files)	PC_CO_IM EP_16	subchain	15	
IMEP: TD - Business (Flat Files)	PC_CO_IM EP_17	subchain	15	
IMEP: TD - Reporting (Flat Files)	PC_CO_IM EP_18	subchain	15	
IMEP: TD - Delete period in DSOs (Previous) (Solvay)	PC_CO_IM EP_21	subchain	20	Before loading a period, the same period has to be deleted from target DSOs. The same is done in cubes using a Delete Overlapping DTP after they are loaded.  Global Filter IMEP/SOLV_DEL/2 is used
IMEP: TD - Reporting (Previous) (Solvay)	PC_CO_IM EP_22	subchain	20	
IMEP: TD - Reporting (Previous) (RCS)	PC_CO_IM EP_23	subchain	25	
IMEP: TD - Delete period in targets (Previous) (RCS)	PC_CO_IM EP_24	subchain	25	Before loading a period, the same period has to be deleted from targets (DSO/Cubes)  Global Filter IMEP/RCS_DEL/2 is used
IMEP: TXT - Cost Element (through 0STKEYFIG) (Solvay)	PC_CO_IM EP_28	subchain	30	Loads 0STKEYFIG Texts and copy them in 0COSTELMNT for Controlling Area CHEF
IMEP: MD - Standard Key Figure (Solvay)	PC_CO_IM EP_29	subchain	30	Loads 0STKEYFIG Attributes
IMEP: TD - Delete period in DSOs for Budget (Flat File)	PC_CO_IM EP_31	subchain	15	Before loading a period, the same period has to be deleted from targets (DSO/Cubes)  Global Filter IMEP/FF_DATA/4 is used for Version, 5 for Plants, and 6 for Fiscal Year.
IMEP: TD - Delete period in DSOs for CC postings (FF)	PC_CO_IM EP_33	subchain	32	Before loading a period, the same period has to be deleted from targets (DSO/Cubes)  Global Filter IMEP/FF_DATA/4 is used for Version, 5 for Plants, and 6 for Fiscal Year.
IMEP: TD - Propagation (CC postings) (Flat Files)	PC_CO_IM EP_34	subchain	32	
IMEP: TD - Business (CC postings) (Flat Files)	PC_CO_IM EP_35	subchain	32	
IMEP: TD - Reporting (CC postings) (Flat Files)	PC_CO_IM EP_36	subchain	32	
IMEP: TD - Business (Previous) (Solvay)	PC_CO_IM EP_40	subchain	20	
IMEP: TD - Propagation (Previous) (Solvay)	PC_CO_IM EP_41	subchain	20	Global Filter IMEP/SOLV_LOAD/2 is used to limit the InfoPackage
IMEP: TD - Propagation (Previous) (RCS)	PC_CO_IM EP_42	subchain	25	Global Filter IMEP/RCS_LOAD/2 is used to limit the InfoPackage
IMEP: TD - Business (Previous) (RCS)	PC_CO_IM EP_43	subchain	25	

## Loading frequency

IMEP is loaded daily, excluding Sundays. Previous month is loaded from 01 to 08 only while Current month is loaded from 01 to the end of month.

Events on Solvay ECC (PF1) and RCS (WP1) start BW Process Chains. These events are not expected to run on Sundays.

Flat Files (Excel file) can be loaded manually in transaction ZIMEP\_FILE, at will.

## Average performance

Key Figure	Estimation
~ Average Process Chain Runtime	1 hour 20 minutes (PC 01/20) 40 minutes (PC 08/25) 10 minutes (PC 15/32) 5 minutes (PC 26) <1 minute (PC 27/30)
~ Average nb of rows loaded per load	CRCOPP01 - 0 15.000 CRCOPP04 - 0 200.000 CRCOPP06 - 0 100.000 CRCOPP07 - 0 6.000 CRCOPP09 - 0 400.000
~ Total nb of rows loaded (if full)	Business level on 2018.06.28: DBCOPP01 - 260.000 <del>DBCOPP02 - 600.000</del> DBCOPP03 - 16.000 DBCOPP04 - 2.600.000 <del>DBCOPP05 - 4.800.000</del> DBCOPP06 - 1.550.000 Others - <1.000 DBCOPP12 - 108.000 DBCOPP13 - 58.000 DBCOPP15 - 6.450.000 DBCOPP16 - 1.810.000 <b>Total in MVCOPP01 - 17.200.000</b>
~ Average Runtime for 10k lines	

## Record Keeping

Business requires 3 years of historical data in addition to current year. (Y to Y-3)

Cubes contain data since 2017. Historical data beyond this is stored in Propagation/Business level.

The number of years to keep can be maintained in Global Filter (C\_GLBFLT) masterdata (Stream IMEP / Rule RCS\_HISTO or SOLV\_HISTO/ Counter '001')

Older data are deleted from DSOs/Cubes at the end of the RCS and Solvay process chains (PC\_CO\_IMEP\_01/08/20/25).

### Data availability for go live (01.2017)

From Solvay PF1 : 2014 + 2015 + 2016

From RCS WP1: 2015 + 2016 (2014 was not available anymore as year was archived in WP1)

# Reporting

## Queries End User Documentation

IMEP - Integrated Manufacturing & Energy Performance

### IMEP Glossary : IMEP - Characteristics

#### Main queries

Report	Technical name	Type	Comment	Link to documentation
MANUFACTURING - Local Core Query	BW_QRY_MV COPP01_0002	QRY	Manufacturing report will be used to display all the characteristic and key figures loaded from the ZWPP40x program. This report will display key figures only on company code currencies and local base unit of measure.	<a href="https://drive.google.com/file/d/1wKqgm4TeWGNxWEqsKlqvXqwkjY-kCYuRnp6cOSZMis/view">https://drive.google.com/file/d/1wKqgm4TeWGNxWEqsKlqvXqwkjY-kCYuRnp6cOSZMis/view</a>
MANUFACTURING - Consolidation Core Query	BW_QRY_MV COPP01_0008	QRY	Manufacturing report will be used to display all the characteristic and key figures loaded from the ZWPP40x program. This report will provide the possibility to display unit of measure and currency in a consolidate target unit.	<a href="https://drive.google.com/file/d/1Z1ALcUlgwlgmetPnrihYgsCapYt-4Wf5aHGGISCE0/view">https://drive.google.com/file/d/1Z1ALcUlgwlgmetPnrihYgsCapYt-4Wf5aHGGISCE0/view</a>
MANUFACTURING - Consolidation QV Query	QVIMEP_BW_QRY_MVCOP P01_0008	QRY	This report is based on BW_QRY_MVCOPP01_0008 report, and is dedicated to QV application.	<a href="https://drive.google.com/open?id=1S9WSHO0R2ecDV7pPkupkcO4fRjDAHtC1OC4Vz9lnEdo">https://drive.google.com/open?id=1S9WSHO0R2ecDV7pPkupkcO4fRjDAHtC1OC4Vz9lnEdo</a>
ENERGY: Consumption, Expenses and Carbon Footprints (Core Query)	BW_QRY_MV COPP01_0003	QRY	Report will display the energy purchase information	<a href="https://drive.google.com/open?id=1MbtEZhYOs87E_jcm9JXTqwfvbSNdjrMEIiZ6JwDAkZl">https://drive.google.com/open?id=1MbtEZhYOs87E_jcm9JXTqwfvbSNdjrMEIiZ6JwDAkZl</a>
ENERGY: Consumption, Expenses and Carbon Footprints (QV Query)	QVIMEP_BW_QRY_MVCOP P01_0003	QRY	This report is based on BW_QRY_MVCOPP01_0003 report, and is dedicated to QV application.	<a href="https://drive.google.com/open?id=1LbrgXlPPQacJRqqX-OU6c7ZhX8uX-oLL2IEq2RagsMI">https://drive.google.com/open?id=1LbrgXlPPQacJRqqX-OU6c7ZhX8uX-oLL2IEq2RagsMI</a>
DEPRECATED - ENERGY - Primary Energy and Emission report (Core Query)	BW_QRY_MV COPP01_0007	QRY	Report will display the primary energy consumption.  DEPRECATED: Merged with BW_QRY_MVCOPP01_0003.	<a href="https://drive.google.com/open?id=1bDPL8PQk0xd7FJcVjyK78qx6ew_QOvJTWY5nkwqhLU">https://drive.google.com/open?id=1bDPL8PQk0xd7FJcVjyK78qx6ew_QOvJTWY5nkwqhLU</a>
ENERGY - Interface Production Report (Core Query)	BW_QRY_MV COPP01_0006	QRY	3 reports will be used to provide source data to the EPS system.  As this is a temporary solution, the reports will be executed manually by the users. No automation process will be implemented	<a href="https://drive.google.com/open?id=1H8vxsJ01jwvmUvA4movkau8umTE-18rbV48Mb1tCmc">https://drive.google.com/open?id=1H8vxsJ01jwvmUvA4movkau8umTE-18rbV48Mb1tCmc</a>
ENERGY - Interface Cost Production Report (Core Query)	BW_QRY_MV COPP01_0005	QRY	3 reports will be used to provide source data to the EPS system.  As this is a temporary solution, the reports will be executed manually by the users. No automation process will be implemented	<a href="https://drive.google.com/open?id=1bT_alWdGYpnmMUQvqvYGSfWHjNRcvtnrLhPeM6ckCLA">https://drive.google.com/open?id=1bT_alWdGYpnmMUQvqvYGSfWHjNRcvtnrLhPeM6ckCLA</a>
ENERGY - Interface Consumption Quantity Report (Core Query)	BW_QRY_MV COPP01_0004	QRY	3 reports will be used to provide source data to the EPS system.  As this is a temporary solution, the reports will be executed manually by the users. No automation process will be implemented	<a href="https://drive.google.com/open?id=1Llajg9nEMubjjiA8znhnEnoT3Bncjcp8ftVIQxwbpckl">https://drive.google.com/open?id=1Llajg9nEMubjjiA8znhnEnoT3Bncjcp8ftVIQxwbpckl</a>
MANUFACTURING - Reconciliation (Workbook)		WB	Manufacturing data reconciliation workbook will be created to compare VC, FC, DEP key figures between the P&L – legal view report and the manufacturing report.	
BW - IMEP - Energy Interface (Core Workbook)	BW_WBK_CO_0001	WB		<a href="https://docs.google.com/document/d/1EMeAbFrL_bJWnpHMN_rT8TuWpWZ2gzGxkMwosd0J1c">https://docs.google.com/document/d/1EMeAbFrL_bJWnpHMN_rT8TuWpWZ2gzGxkMwosd0J1c</a>

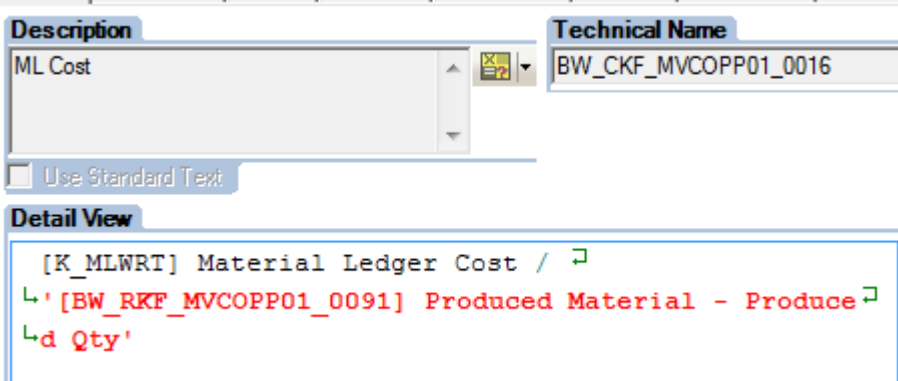
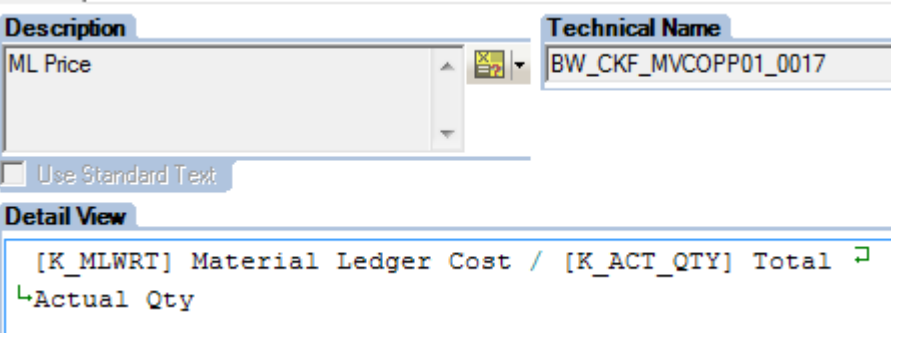
#### Main functionalities

#### "Special" KPIs

Short description	Explanation	Formula	Comments

<p>AUQ AI</p>	<p>Actual Unit Quantity (in French QUR) in Active Ingredient</p>	<p>- Total Actual Qty in AI <a href="#">blocked URL</a> Qty Produced in AI</p> <div data-bbox="467 184 1347 325"> <p><b>Description</b>  AUQ AI</p> <p><b>Technical Name</b>  BW_CKF_MVCOPP01_0012</p> <p><input type="checkbox"/> Use Standard Text</p> </div> <p><b>Detail View</b></p> <pre data-bbox="467 415 1347 535"> - NODIM( ( [K_AQTY_AI] Actual Qty in AI / ↳ '[BW_RKF_MVCOPP01_0093] Produced Material - Qty Pro ↳ duced in AI' ) ) </pre> <p>Total Actual Qty in AI : ratio K_AQTY_AI, origin field ACT_QTY_AI of table ZWPPMCKOST</p> <p>Qty Produced in AI : ration K_QTYPRAI, origin field MEGP_AI</p> <p>The produced quantity in AI is found only for Index 1 = '1'. The quantity has to be used to calculate the coefficient on others indexes</p>	<p>Restricted Keyfigure for Quantity Produced in AI with Constant Selection for all characteristics except Period /GBU /CompanyCode/PlantMaterial</p> <p>Calculated Keyfigure for AUQ AI</p>
<p>QUS</p>	<p>Standard Consumption factor of the item for one unit produced</p>	<p>- Std Qty SCE <a href="#">blocked URL</a> Std Qty SCE (produced material)</p> <div data-bbox="467 808 1347 949"> <p><b>Description</b>  QUS</p> <p><b>Technical Name</b>  BW_CKF_MVCOPP01_0009</p> <p><input type="checkbox"/> Use Standard Text</p> </div> <p><b>Detail View</b></p> <pre data-bbox="467 1039 1347 1159"> - NODIM( ( [K_STQTSCE] Std Qty SCE / ↳ '[BW_RKF_MVCOPP01_0092] Produced Material - Std Qty ↳ SCE' ) ) </pre> <p>Std Qty SCE: ratio K_STQTSCE, origin field MEVS5 of table ZWPPMCKOST</p> <p>Std Qty SCE (produced material): ratio K_STQTSCE limited on index 1 = '1' (Produced material)</p>	<p>Restricted Keyfigure for Std Qty SCE (produced material) with Constant Selection for all characteristics except Period /GBU /CompanyCode/PlantMaterial</p> <p>Calculated Keyfigure for QUS</p>
<p>QUR</p>	<p>Actual Consumption factor of the item for one unit produced</p>	<p>- Total Actual Quantity <a href="#">blocked URL</a> Produced Quantity X Lot Size</p> <div data-bbox="467 1339 1347 1480"> <p><b>Description</b>  QUR</p> <p><b>Technical Name</b>  BW_CKF_MVCOPP01_0008</p> <p><input type="checkbox"/> Use Standard Text</p> </div> <p><b>Detail View</b></p> <pre data-bbox="467 1570 1347 1690"> - NODIM( ( [K_ACT_QTY] Total Actual Qty / ↳ '[BW_RKF_MVCOPP01_0091] Produced Material - Produce ↳ d Qty' ) ) </pre> <p>Total Actual Quantity : ratio K_ACT_QTY, origin field ACT_QTY of table ZWPPMCKOST</p> <p>Produced Quantity : ratio K_PRODQT, origin field MEGP of table ZWPPMCKOST</p> <p>The produced quantity is found only for Index 1 = '1'. The quantity has to be used to calculate the coefficient on others indexes</p> <p>Lot Size : generally 1000. The Lot size is not currently available, use 1000 for the moment.</p>	<p>Restricted Keyfigure for Produced Quantity with Constant Selection for all characteristics except Period /GBU /CompanyCode/PlantMaterial</p> <p>Calculated Keyfigure for QUR</p>

CUS	Standard unitary cost of the item for one unit produced	<p>- Std Cost SCE <b>blocked URL</b> Std Qty SCE (produced material)</p> <p><b>Description</b> CUS</p> <p><b>Technical Name</b> BW_CKF_MVCOPP01_0010</p> <p><input type="checkbox"/> Use Standard Text</p> <p><b>Detail View</b></p> <pre>- NODIM( ( [K_STCSSCE] Std Cost SCE / ↵ ↳ '[BW_RKF_MVCOPP01_0092] Produced Material - Std Qty' ↵ ↳ 'SCE' ) )</pre> <p>Std Cost SCE: ratio K_STCSSCE, origin field WKVS5 of table ZWPPMCKOST</p> <p>Std Qty SCE (produced material): see upper definition</p>	Calculated Keyfigure for CUS
CUR	Actual unitary cost of the item for one unit produced	<p>- Actual Cost <b>blocked URL</b> Produced Quantity X Lot Size</p> <p><b>Description</b> CUR</p> <p><b>Technical Name</b> BW_CKF_MVCOPP01_0011</p> <p><input type="checkbox"/> Use Standard Text</p> <p><b>Detail View</b></p> <pre>- NODIM( ( [K_ACT_CST] Actual Costs / ↵ ↳ '[BW_RKF_MVCOPP01_0091] Produced Material - Produce' ↵ ↳ 'd Qty' ) )</pre> <p>Actual Cost : ratio K_ACT_CST, origin field WKGIB of table ZWPPMCKOST</p> <p>Produced Quantity &amp; Lot Size: see upper definition</p>	Calculated Keyfigure for CUR
SUQ AI	Standard Unit Quantity (in French QUS) in Active Ingredient	<p>- Std Qty SCE in AI <b>blocked URL</b> Std Qty SCE in AI (produced material)</p> <p><b>Description</b> SUQ AI</p> <p><b>Technical Name</b> BW_CKF_MVCOPP01_0013</p> <p><input type="checkbox"/> Use Standard Text</p> <p><b>Detail View</b></p> <pre>- NODIM( ( [K_SCEQ_AI] SCE StdQ.AI / ↵ ↳ '[BW_RKF_MVCOPP01_0094] Produced Material - Std Qty' ↵ ↳ 'SCE in AI' ) )</pre> <p>Std Qty SCE in AI : ratio K_SCEQ_AI, origin field MEVS5_AI of table ZWPPMCKOST</p> <p>Std Qty SCE in AI (produced material): ratio K_SCEQ_AI limited on index 1 = '1' (Produced material)</p>	Restricted Keyfigure for Std Qty SCE in AI with Constant Selection for all characteristics except Period /GBU /CompanyCode/PlantMaterial  Calculated Keyfigure for SUQ AI

Lot Size	Lot Size used for calculating standard cost		<p>This KPI is coming from ZWPPMCKOST table. The value is repeated on each lines.</p> <p>Then in BW, for aggregated analysis, the sum of all values is displayed which is not correct.</p> <p>The Lot Size should be a masterdata information.</p>
ML Cost		 <p>The screenshot shows the configuration for the 'ML Cost' KPI. The 'Description' field contains 'ML Cost'. The 'Technical Name' field contains 'BW_CKF_MVCOPP01_0016'. Below the description, there is a checkbox for 'Use Standard Text' which is unchecked. The 'Detail View' section contains the following text: '[K_MLWRT] Material Ledger Cost / [BW_RKF_MVCOPP01_0091] Produced Material - Produce Qty'.</p>	
ML Price		 <p>The screenshot shows the configuration for the 'ML Price' KPI. The 'Description' field contains 'ML Price'. The 'Technical Name' field contains 'BW_CKF_MVCOPP01_0017'. Below the description, there is a checkbox for 'Use Standard Text' which is unchecked. The 'Detail View' section contains the following text: '[K_MLWRT] Material Ledger Cost / [K_ACT_QTY] Total Actual Qty'.</p>	

## Broadcast

No broadcast

## Maintenance

### Known bugs

### Recurring procedure

### Reload data on a given period

**Warning n°1:** Cost Center Postings Business data (DBCOPP06, DBCOPP16) must always be loaded **after** Current and Historical Business data (DBCOPP01, DBCOPP04). Failure to do so will lead to incorrect CC Postings data. (PS: The method below avoids this issue, but be careful if you only reload from Business Level without launching the Process Chain)

**Warning n°2:** A "Delete Overlapping DTPs" step is applied on all Cubes reloaded daily. Always reload Current Month M (and Previous Month M-1 in closure period) in a **separate load** from the historical data, otherwise the data will be duplicated the next day as the Delete Overlapping cannot remove the data from a larger perimeter.

- Update data in C\_GLBFLT (Stream = IMEP). You need to change the period in \*\*\*\_LOAD/1 and \*\*\*\_DEL/1 to the period you are using. Depending on what you are reloading, \*\*\* is either SOLV or RCS:

**Characteristic C\_GLBFLT - maintain master data: List**

Stream	Rule	Counter	Global Filter Descri	Sign	Option	Low	Hight	Active
IMEP	RCS_DEL	1	Period (YYYYPPP) to delete, RCS DSO/Cube. NO_DEL to avoid	I	BT	2017011	2017011	Y
IMEP	RCS_HISTO	1	Number of Year to keep in all DSOs/Cubes RCS	I	EQ	6		Y
IMEP	RCS_HISTO	2	Delete all data in all DSOs/Cubes RCS older than	I	EQ	2011011		Y
IMEP	RCS_LOAD	1	Period (YYYYPPP) to load, RCS. NO_LOAD to avoid loadings	I	BT	2017011	2017011	Y
IMEP	SOLV_DEL	1	Period (YYYYPPP) to delete, SOLVAY DSO/Cube. NO_DEL to avoid	I	BT	2017011	2017011	Y
IMEP	SOLV_HISTO	1	Number of Year to keep in all DSOs/Cubes Solvay	I	EQ	6		Y
IMEP	SOLV_HISTO	2	Delete all data in all DSOs/Cubes Solvay older than	I	EQ	2011011		Y
IMEP	SOLV_LOAD	1	Period (YYYYPPP) to load, SOLVAY. NO_LOAD to avoid loadings	I	BT	2017011	2017011	Y

- The previous step is usually done by program ZBW\_IMEP003 when the Process Chain starts. Thus, you need to disable the variant used in the PC to keep the period entered manually. To do so, open the Process Chain you will use for the reload (PC\_CO\_IMEP\_01 for Solvay and PC\_CO\_IMEP\_08 for RCS) and check the first program.

Variant will always be ZVAR\_PER\_\*\*\*:

Variant  Determine period to load/delet

Last Changed By  Changed On  At

Call Mode

Synchronous

Asynchronous

Called From

Local

Destination

Program to Call

Program

Program Name

Program Variant

Open the variant to Change it, check the "Initialization?" button:

**Edit Variants: Variant ZVAR\_PER\_SOLV1**

Variant Attributes

If Initialization is selected, below parameters are ignored

Initialization?

Save and leave. Don't forget to come back to uncheck the button once you are done.

- Run the Process Chain using Function Module (SE37) RSPC\_API\_CHAIN\_START, keep an eye on the process.

Planned Evolution