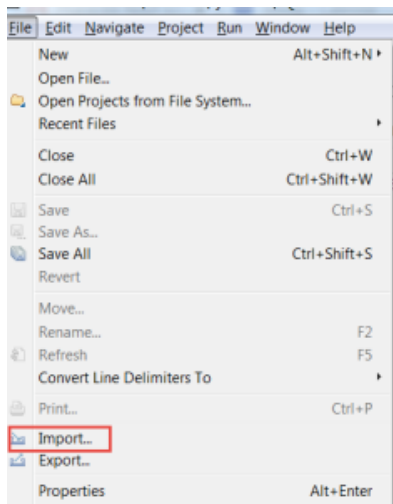


Add system by import landscape

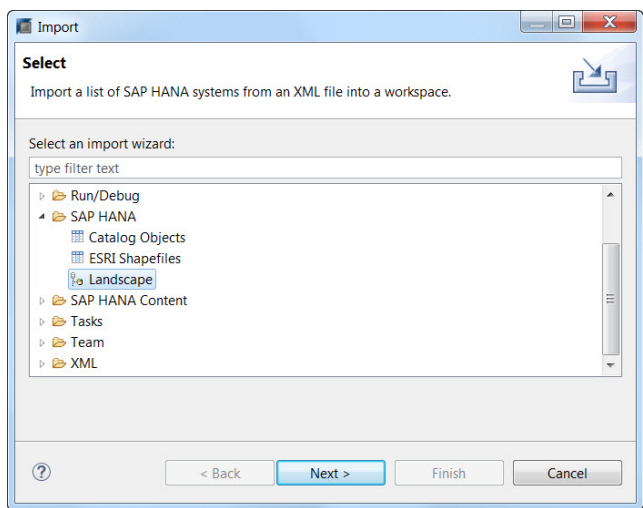
1. Download xml file for the system that you want to add. Then, change user ID in xml file 2 places and save to your local drive

```
<?xml version="1.0" encoding="UTF-8"?>
<navigator version="1.2">
<tree>
<folder name="BW">
<sapsystem name="WB1:WB1DB.IBM.BE.SOLVAY.COM:30:WB1:TH30085"/>
</folder>
</tree>
<sapsystems>
<sapsystem databasename="WB1" databasetype="USERDB" description="Sandbox"
hostname="wb1db.ibm.be.solvay.com" instancenumber="30" open="true"
secure="false" ssl="false" systemname="WB1" username="TH30085">
<hostrole hostname="wb1db.ibm.be.solvay.com"
publicname="wb1db.ibm.be.solvay.com" role="CLIENT" sqlport="33015"/>
<hostrole hostname="solhn008" publicname="150.251.114.76" role="MASTER"
sqlport="0"/>
<jdbc locale="en_SG" reconnect="false" validate_crtf="true"/>
<sapcontrol state="OFF"/>
</sapsystem>
</sapsystems>
</navigator>
```

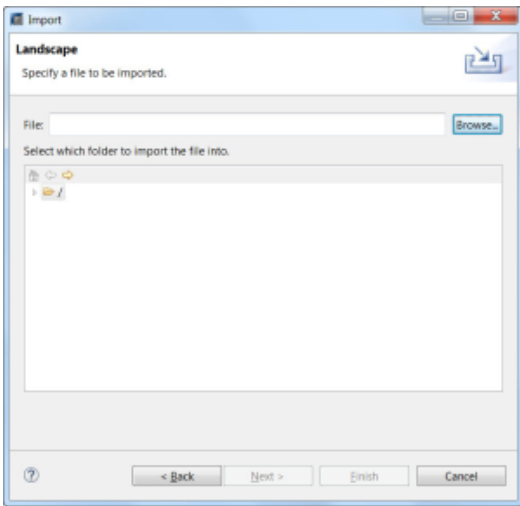
2. Open HANA studio and click on File Import...



2. Select landscape



3. Browse file in your local drive and click Finish



landscapeWB1.xml



landscapeWBD.xml



landscapeWBP.xml



landscapeWBQ.xml