

BW - DPS - Demand Planning Scheduling (Dynasys)

- General presentation
 - Objective of the application
 - Usage information
 - History
- Roles & Access
 - Roles and access
 - Authorization objects
- Dataflow overview
 - DynaSys database
 - DynaSys source view used
 - Functional and Technical rules on Workbench + Reporting
 - Rules & Explanations
 - Specification document
 - Quantity conversion
 - Dependencies with other applications
- Data loadings
 - Info providers and objects loaded
 - Master Data
 - Transactional Data
 - Loading frequency
 - Average performance
 - Record Keeping
- Reporting
 - Queries End User Documentation
 - Main queries
 - Main functionalities
 - Broadcast
- Maintenance
 - Known bugs
 - Recurring procedure
 - Planned Evolution

General presentation

Objective of the application

The objective of the application is to extract from Dynasys Forecast & Booking data and also Dynasys Master data (ShipTo, SpecID, Market...).

Then these data are used for the application [BW - DPS - Forecast Vs Booking / Component](#).

Tool Leader: Lei Shen

IT leader of the application: Lei Shen (PP), Romain Clerc (Dynasys) Craig Wanamaker (BW)

Name of project: Solstice

PMO Project: 8612 Solstice AERO

Reporting Coordinator: Lei Shen

Usage information

Number of users: tbd

Critical period: none

Geographical perimeter: worldwide

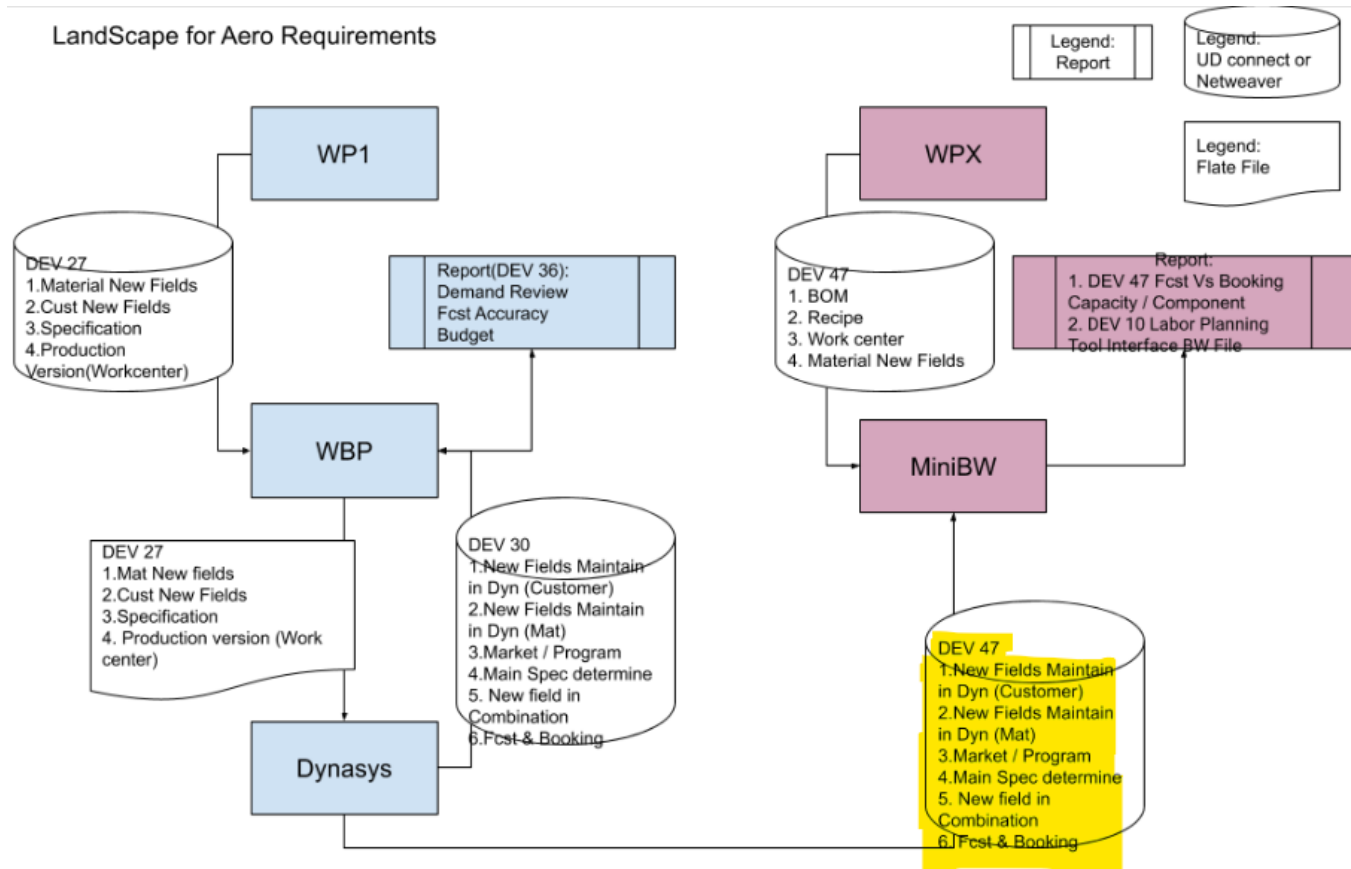
InfoArea:

- ▼ BW Repository
 - > [IA_RHODIA] RHODIA
 - ▼ [IA_SOLVAY] SOLVAY
 - ▼ [IA_DP] Demand Planning Scheduling
 - ▼ [IA_DP_DY] DPS - Data Import from Dynasys
 - > [IA_DP_DY_VIRTUAL] Dynasys Virtual
 - > [IA_DP_DY_BUSINESS] Dynasys Business
 - > [IA_DP_DY_PROPAGATION] Dynasys Propagation
 - > [IA_DP_DY_ACQUISITION] Dynasys Acquisition
 - > [IA_DP_DY_MD] Dynasys MasterData

History

This application is linked to the Solstice global project and this specific need was named "DEV47- Other MiniBW request for planning team".

MiniBW (CPX) dedicated platform was created for Aero Requirements about Solstice project.



Roles & Access

Roles and access

List of application role + menu role and explanation if we have several applications role with specials rules.

Role Code	Role Description	Explanation

Authorization objects

List of autorisation objects mandatory for the application.

Authorization object	Explanation

Dataflow overview

Reporting documentation drive folder:

<https://drive.google.com/drive/folders/1Y2OmoBqD6VWwpmUPnuiQ6ZFm0hwIPruA>

Dataflow overview :

DynaSys database

Dynasys is a MSSQL tool, the connection with CPX system is done with SAP Hana Smart Data Access.

Dynasys main servers :

Dynasys Development server => wdcslvbd31\slv1_dbdev

Dynasys Testing server => wdcslvbt31\slv1_dbtst

Dynasys Production server => wdcodyap21\dy_dbprd

DynaSys source view used

DynaSys View	MasterData /Transactionnal	Content	Associated Datasource	Comments
EXP_MFB_V1_BW	Transactionnal	Forecast and Sold & Booking data (Quantity and Amount) by month	DTS_ZBW_V_EXP_MFB_V1_BW	Forecast data from current month to current + 17 months => 18 months of forecast data
EXP_MFB_V2_BW	MasterData	Specification, Market, Program Master Data	DTS_ZBW_V_EXP_MFB_V2_BW	
EXP_MFB_V3_BW	MasterData	ShipTo Master Data	DTS_ZBW_V_EXP_MFB_V3_BW	
EXP_MFB_V4_BW	MasterData	Forecast Customer Master Data	DTS_ZBW_V_EXP_MFB_V4_BW	

Functional and Technical rules on Workbench + Reporting

Rules & Explanations

Specification document

Sheet "Dim_Forecast&Booking" :

Quantity conversion

There are two fields with currency coming from Dynasys :

- Forecast quantity (FF_QTY)
- Sold & Booked quantity (SOB_QTY)

Both are extracted from Dynasys in KG and stored respectively in following key figures :

- Forecast quantity (K_FFQTY)
- Sold & Booked quantity (K_SOBQTY)

There are also converted in **Base Unit of Measure** linked to the material record in following key figures :

- Forecast quantity (K_FFQTYB)
- Sold & Booked quantity (K_SOBQTYB)

Determination of Base Unit of Measure (by reading C_MATNR Master Data) and **conversion in Base unit of measure** are done in the end routine of transformation between **ADSO APDPDY01** and **ABDPDY01**.

See below the link to have more explanations on ABAP rules applied :

[BW OTC - Supply Chain- DPS \(WBP\) /!\ Obsolete /!\#SupplyChain-DPS\(WBP\)-ConversioninKGunit](#)

Dependencies with other applications

Dynasys data are used in application [BW - DPS - Forecast Vs Booking / Component](#).

Data loadings

Info providers and objects loaded

Master Data

Master data are loaded by the process chain **DICO_PC_DPS_MD** :

▼ 103 - PROJECT - DPS - Demand Planning Scheduling	DICO_PC_DPS
> 103 - DPS - Business Layer	DICO_PC_DPS_BUSINESS
> 103 - DPS - Propagation Layer	DICO_PC_DPS_PROPAGATION
> 103 - DPS - Acquisition Layer	DICO_PC_DPS_ACQUISITION
▼ 103 - DPS - Master Data	DICO_PC_DPS_MD
• DPS Dynasys : MD - D - Master Data Attributes	PC_DPS_DYNASYS_01
• DPS Dynasys : MD - D - Master Data Texts	PC_DPS_DYNASYS_02
> DPS CV Forecast Level by Level : META - D - Master Chain	PC_DPS_DYNASYS_09

Dynasys Master Data Process chain are part of global chain **RSP_DAILY_GLOBAL** :

▼ 010 - DAILY - META Chains at fixed time	DICO_PC_DAILY_01
▼ META - D - Daily Process Chains (Attr, Texts, Unit conv)	RSP_DAILY_GLOBAL
• DPS Dynasys : MD - D - Master Data Attributes	PC_DPS_DYNASYS_01
• DPS Dynasys : MD - D - Master Data Texts	PC_DPS_DYNASYS_02
• Global: MD - D - Material unit of quantity (DSO)	PC_GLOBAL_ATTR_04
• Global: MD - D - Unit Conversions for Material (Vault)	PC_GLOBAL_ATTR_03
> Global: META - MD - D - Master Data Attributes (Vault)	PC_GLOBAL_ATTR_01
> Global: META - TXT - D - Master Data Texts (Vault)	PC_GLOBAL_TEXT_01
> META - D - Daily Process Chains (Transactional)	RSP_DAILY

Transactionnal Data

There are 3 process chain (one by Layer) to load transactionnal data :

- Acquisition Layer : **PC_DPS_DYNASYS_03**
- Propagation Layer : **PC_DPS_DYNASYS_04**
- Business Layer : **PC_DPS_DYNASYS_05**

▼ 103 - PROJECT - DPS - Demand Planning Scheduling	DICO_PC_DPS
▼ 103 - DPS - Business Layer	DICO_PC_DPS_BUSINESS
• DPS Dynays : TD - D - Business Layer	PC_DPS_DYNASYS_05
▼ 103 - DPS - Propagation Layer	DICO_PC_DPS_PROPAGATION
• DPS CV Forecast Level by Level : TD - D - Propagation Layer	PC_DPS_DYNASYS_08
• DPS Dynasys : TD - D - Propagation Layer	PC_DPS_DYNASYS_04
▼ 103 - DPS - Acquisition Layer	DICO_PC_DPS_ACQUISITION
• DPS CV Forecast Level by Level : TD - D - Acquisition Layer	PC_DPS_DYNASYS_07
• DPS Dynasys : TD - D - Acquisition Layer	PC_DPS_DYNASYS_03
▶ 103 - DPS - Master Data	DICO_PC_DPS_MD
▶ DPS CV Forecast Level by Level : META - D - Master Chain	PC_DPS_DYNASYS_09
▶ DPS Dynasys : META - D - Master Chain	PC_DPS_DYNASYS_06
▶ 104 - PROJECT - PU - Purchasing	DICO_PC_PU

These process chain are part of global chain **RSP_DAILY**

▼ 010 - DAILY - META Chains at fixed time	DICO_PC_DAILY_01
▶ META - D - Daily Process Chains (Attr, Texts, Unit conv)	RSP_DAILY_GLOBAL
▼ META - D - Daily Process Chains (Transactional)	RSP_DAILY
▶ DPS CV Forecast Level by Level : META - D - Master Chain	PC_DPS_DYNASYS_09
• DPS Dynasys : TD - D - Acquisition Layer	PC_DPS_DYNASYS_03
• DPS Dynasys : TD - D - Propagation Layer	PC_DPS_DYNASYS_04
• DPS Dynays : TD - D - Business Layer	PC_DPS_DYNASYS_05
▶ META - D - PP - Master Chain	PC_PP_04
▶ 010 - DAILY - META Chains on EVENT	DICO_PC_DAILY_02
▶ 010 - DAILY - Attributs Chains	DICO_PC_DAILY_ATTR

There is also a global process chain to load master data and transactionnal data : **PC_DPS_DYNASYS_06**

▼ 103 - PROJECT - DPS - Demand Planning Scheduling	DICO_PC_DPS
▶ 103 - DPS - Business Layer	DICO_PC_DPS_BUSINESS
▶ 103 - DPS - Propagation Layer	DICO_PC_DPS_PROPAGATION
▶ 103 - DPS - Acquisition Layer	DICO_PC_DPS_ACQUISITION
▶ 103 - DPS - Master Data	DICO_PC_DPS_MD
▶ DPS CV Forecast Level by Level : META - D - Master Chain	PC_DPS_DYNASYS_09
▼ DPS Dynasys : META - D - Master Chain	PC_DPS_DYNASYS_06
• DPS Dynasys : MD - D - Master Data Attributes	PC_DPS_DYNASYS_01
• DPS Dynasys : MD - D - Master Data Texts	PC_DPS_DYNASYS_02
• DPS Dynasys : TD - D - Acquisition Layer	PC_DPS_DYNASYS_03
• DPS Dynasys : TD - D - Propagation Layer	PC_DPS_DYNASYS_04
• DPS Dynays : TD - D - Business Layer	PC_DPS_DYNASYS_05
▶ 104 - PROJECT - PU - Purchasing	DICO_PC_PU

Loading frequency

Daily loading

Average performance

Key Figure	Estimation
~ Average Process Chain Runtime	
~ Average nb of rows loaded per load	
~ Total nb of rows loaded (if full)	
~ Average Runtime for 10k lines	

Record Keeping

Reporting

Queries End User Documentation

Main queries

There is a query BW_QRY_CPDPDY01_0001 (Dynasys - Dynasys Data Reporting) based on composite provider CPDPDY01 (Dynasys Virtual).

This query **was used for testing data** coming from Dynasys source system **but it is not used and accessible by key users.**

Main functionalities

Broadcast

Maintenance

Known bugs

Recurring procedure

Planned Evolution