

zzz Operational Excellence

Operational Excellence (Critical Path Method)

- Example of e-room database
- PAX Chart flow from 06/2019
- Contact
- Overview
- Database Diagram
- Data Loading
- Universe Documentation
 - Operational Excellence (CPM).UNV
- Main BI4 Core Reports
 - BI4 core folder: 521 - Operational Excellence
- Useful links

Application fully decommissioned on 02/2021

Decomm BI4 folder "521 - Operational Excellence" - <https://sbs-support.solvay.com/a/tickets/5250116>

Example of e-room database

The screenshot shows the SOLVAY e-room database interface. The page title is "P&I Ended & Active Project database (WCM/GAP/Six Sigma)". Below the title, there is a search section with various filters: Project Leader (Tous les membres), Site, Zone, Country, Production Line, Improvement Type, Savings Category, Program, Six Sigma, and Project Status (In execution). The search results are displayed in a table with columns: Project Nb, Project Leader, Project Title, Production Line, Improvement Type, Program, Six Sigma, Launch Date, and Esti. The table shows a list of projects, including "Belle-Etoile 21 trouvé", "Blanes 8 trouvé", "Chalampé 79 trouvé", and "PI CPE 19 008".

Wellcome in P&I Improvement projects database...

Projects reference Number rules : **PI SSS YY NNN**, with :

- **SSS** = Site : BLS, BET, CPE, FRG, ONS, PLA or VAL or R&D for project on R&D basic datas project, or **PWW** if project is not specific to only one Site
- **YY** = Started year of the project
- **NNN** = Incremental Number (sort projects list by Project number to determine it)

For any question or problem, send an e-mail to francoise.neaulme@solvay.com

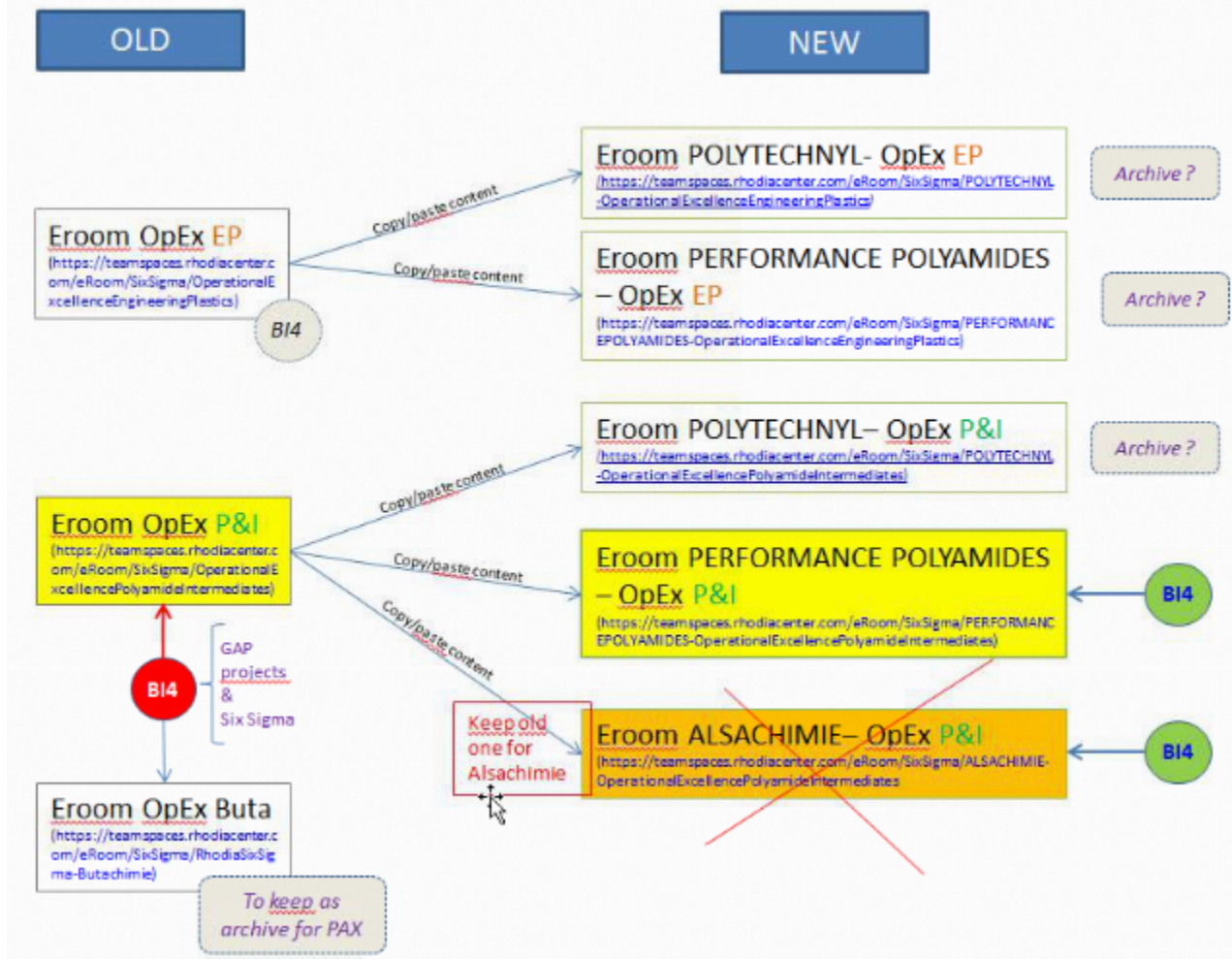
Rechercher :

Project Leader: Tous les membres
Site: (indifférent)
Zone: (indifférent)
Country: (indifférent)
Production Line: (indifférent)
Improvement Type: (indifférent)
Savings Category: (indifférent)
Program: (indifférent)
Six Sigma: (indifférent)
Project Status: In execution

Rechercher Réinitialiser Paramètres avancés (filtre de recherche en cours d'utilisation, 200 entrées trouvées)

Project Nb	Project Leader	Project Title	Production Line	Improvement Type	Program	Six Sigma	Launch Date	Esti
Regrouper par Site								
Belle-Etoile 21 trouvé								
Blanes 8 trouvé								
Chalampé 79 trouvé								
PI CPE 19 008	BIZARD, camille	REX des incidents arrêts 2018	HMD	Capacity : MDC / CMJ; Quality : Capability; Variable costs : All (RM, Utilities, Energy...)	GAP/PIT	Non	28 déc. 2018	

PAX Chart flow from 06/2019



Contact

OPERXL application owner (Solvay) : Dominique PETIT, Françoise NEAULME

Transfer from e-room to SQL database : Cap-Gemini (murtuza.hariyanawala-ext@solvay.com)

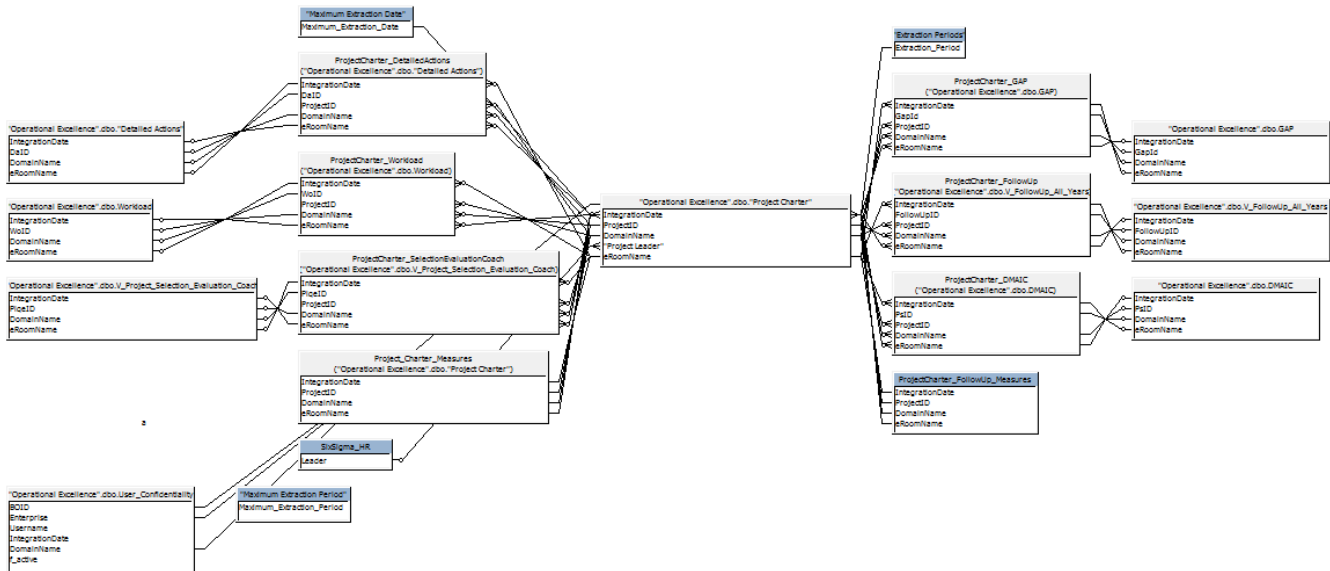
Overview

The Operational Excellence application deals with Sixsigma projects portfolio stored in eRoom databases.



The universal export tool makes the snapshot copies from eRoom databases with the same template to a sqlserver database

Database Diagram



Data Loading

OPERXL snapshots are created in SQLServer replicated database three times a week (Monday, Tuesday and Thursday) from eRoom databases of several Business Units but having the same eRoom database template. Anyway only the latest snapshot copy for each month is kept in the replicated sqlserver database.

Transfer from e-room to SQL database : Cap-Gemini (murtuza.hariyanawala-ext@solway.com)

Universe Documentation

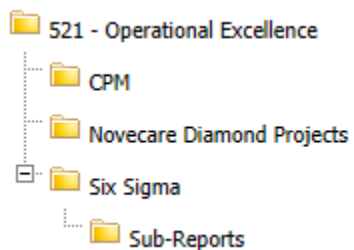
Operational Excellence (CPM).UNV

26 classes
460 objects
26 conditions
13 tables
7 alias
18 joins
8 contexts
1 hierarchies

[Link to documentation of UNV version of Operational Excellence \(CPM\) universe](#)

Main BI4 Core Reports

BI4 core folder: 521 - Operational Excellence



Useful links

[Link to UpToDate documentation of universes \(from 360 eyes\)](#)

[Link to Knowledge Transfer documents for Operational Excellence \(CPM\)](#)

***** This application is in the list of eRoom databases to be migrated to SQLServer 2008 *** [see details ...](#)**