

zzz Incident Tracking

Incident Tracking applications

=====

- Overview
 - Database Diagrams
 - Incident Tracking Clamecy
 - Data Loading
 - Incident Tracking Halifax
 - Data Loading
 - Incident Tracking Ospiate
 - Data Loading
 - Novocare WW Incident Tracking
 - Data Loading
 - Universe Documentation
 - Incident Tracking Clamecy (ITC)
 - Incident Tracking Halifax (ITH)
 - Incident Tracking Ospiate (ITO)
 - Novocare WW Incident Tracking (NHQITC)
 - Main BI4 Core Reports
 - BI4 core folder: 526 - Incident Tracking Novocare
 - Useful links

=====

BI4-Incident-Tracking has been definitively decommissioned in 03.2021

Ticket ID [#5250108] Decomm BI4 folder "526 - Incident Tracking Novocare"

**** For Incident Tracking Clamecy, there is an active publication this year, but for others no Webl report using these universes has been refreshed by end users in 2016 ****

Overview

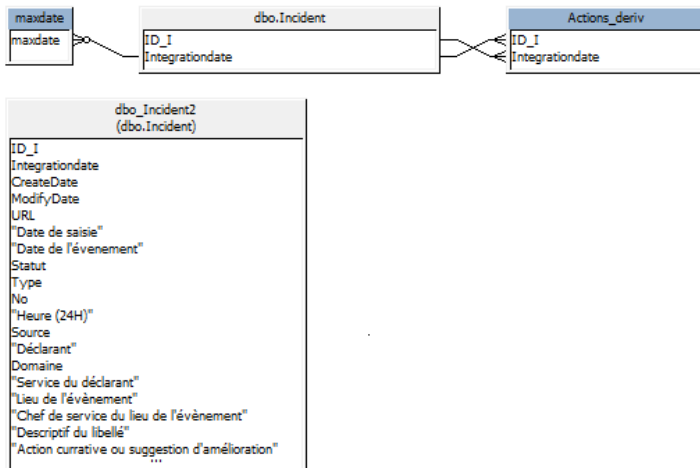
There are four similar applications that deals with tracking of incidents and actions taken.

Incident Tracking Clamecy; Incident Tracking Halifax; Incident Tracking Ospiate and Novocare WW Incident Tracking



Database Diagrams

Incident Tracking Clamecy

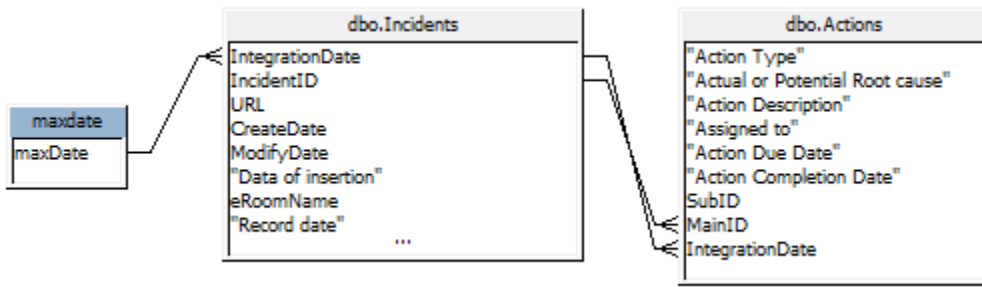


Data Loading

ITC snapshots are created in SQLServer replicated database once a week (Friday) from eRoom database.

Anyway only the latest snapshot copy for each month is kept in the replicated sqlserver database.

Incident Tracking Halifax

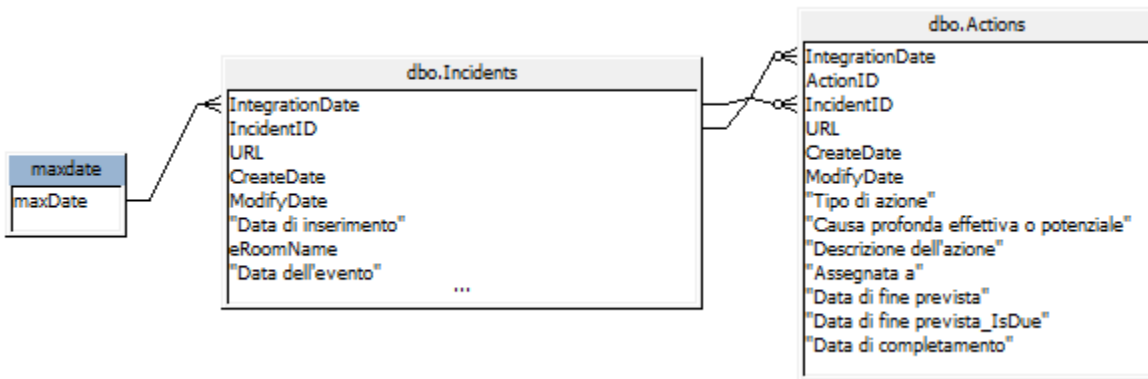


Data Loading

ITH snapshots are created in SQLServer replicated database twice a week (Monday and Wednesday) from eRoom database.

Anyway only the latest snapshot copy for each month is kept in the replicated sqlserver database.

Incident Tracking Ospiate

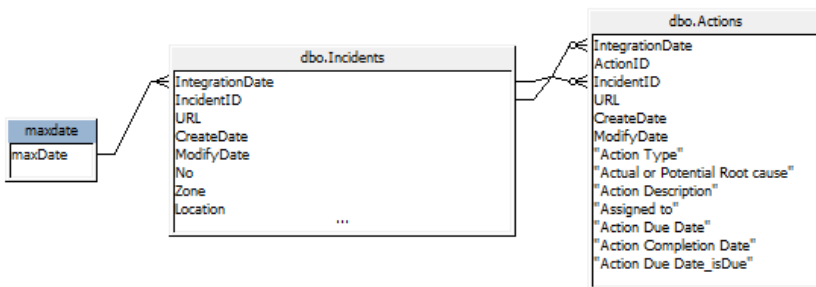


Data Loading

ITO snapshots are created in SQLServer replicated database twice a week (Tuesday and Friday) from eRoom database.

Anyway only the latest snapshot copy for each month is kept in the replicated sqlserver database.

Novicare WW Incident Tracking



Data Loading

NHQITC snapshots are created in SQLServer replicated database twice a week (Tuesday and Friday) from eRoom database.

Anyway only the latest snapshot copy for each month is kept in the replicated sqlserver database.

Universe Documentation

Incident Tracking Clamecy (ITC)

4 classes
43 objects
1 conditions
3 tables
1 alias
2 joins
0 contexts
0 hierarchies

Incident Tracking Halifax (ITH)

4 classes
72 objects
1 conditions
3 tables
0 alias
2 joins
0 contexts
0 hierarchies

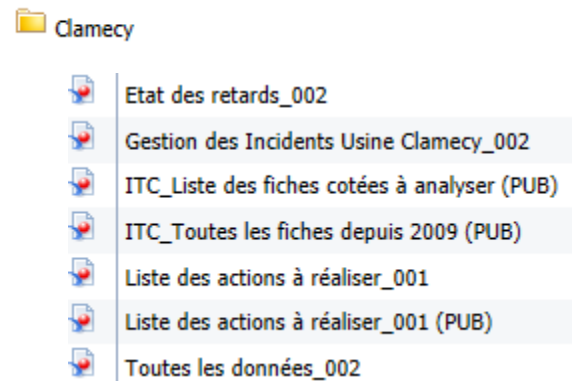
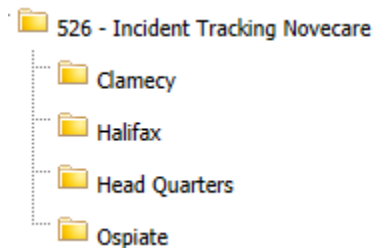
Incident Tracking Ospiate (ITO)

Novecare WW Incident Tracking (NHQITC)

4 classes
68 objects
1 conditions
3 tables
0 alias
2 joins
0 contexts
0 hierarchies

Main BI4 Core Reports

BI4 core folder: [526 - Incident Tracking Novecare](#)



Halifax

- Halifax : List of incidents
- Incident Management Halifax
- My Pending actions : Halifax
- Status of Delays : Halifax

Head Quarters

- HQ_Actions assigned to me_004
- HQ_Data control for CLOSED EVENTS_001
- HQ_Data control for OPENED EVENTS_001
- HQ_Effectiveness Verification_003
- HQ_What's behind schedule_004
- Novicare HQ Incident Tracking_001
- Novicare HQ Incident Tracking_002

Ospiate

- OSPIATE_HQ_Incident_Tracking_001
- OSPIATE_What is behind schedule_001

Useful links





[Link to UpToDate documentation of universes \(from 360 eyes\)](#)

[Link to Knowledge Transfer documents for Incident Tracking applications](#)

***** This application is in the list of eRoom databases to be migrated to SQLServer 2008 *** [see details ...](#)**

Workflow history

This view shows the 5 most recent entries. The complete workflow log is available from the 'Document Activity' menu item.

From Jun 01, 2016 to May 25, 2025	Actor	Type	Activity	Version
	Laurence De Zeeuw , Jose Alvaro De Jesus Monteiro and SWAMI-ext, Shivani Siddhrameshwar	Edit	multiple updates from  Laurence De Zeeuw ,  Jos e Alvaro De Jesus Monteiro and  SWAMI-ext, Shivani Siddhrameshwar	
May 20, 2016	 Jose Alvaro De Jesus Monteiro	Edit	created the page at 7:47 pm	