

# zzz Incident Tracking

Incident Tracking applications

=====

- Overview
  - Database Diagrams
    - Incident Tracking Clamecy
      - Data Loading
    - Incident Tracking Halifax
      - Data Loading
    - Incident Tracking Ospiate
      - Data Loading
    - Novocare WW Incident Tracking
      - Data Loading
  - Universe Documentation
    - Incident Tracking Clamecy (ITC)
    - Incident Tracking Halifax (ITH)
    - Incident Tracking Ospiate (ITO)
    - Novocare WW Incident Tracking (NHQITC)
  - Main BI4 Core Reports
    - BI4 core folder: 526 - Incident Tracking Novocare
  - Useful links

=====

**BI4-Incident-Tracking has been definitively decommissioned in 03.2021**

**Ticket ID [#5250108] Decomm BI4 folder "526 - Incident Tracking Novocare"**

*\*\*\* For Incident Tracking Clamecy, there is an active publication this year, but for others no Webl report using these universes has been refreshed by end users in 2016 \*\*\**

## Overview

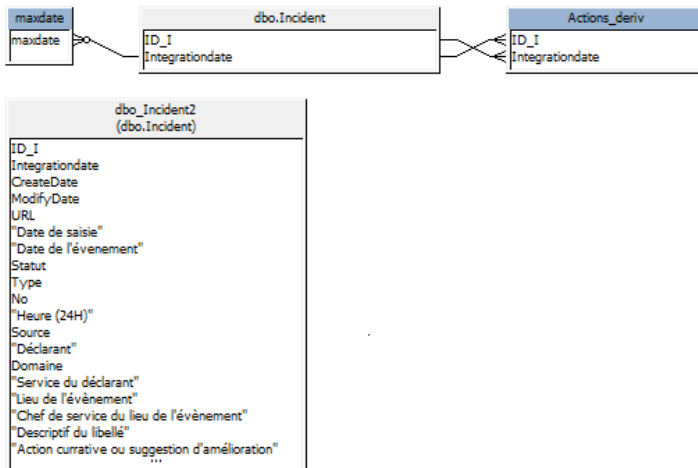
There are four similar applications that deals with tracking of incidents and actions taken.

**Incident Tracking Clamecy; Incident Tracking Halifax; Incident Tracking Ospiate and Novocare WW Incident Tracking**



## Database Diagrams

### Incident Tracking Clamecy

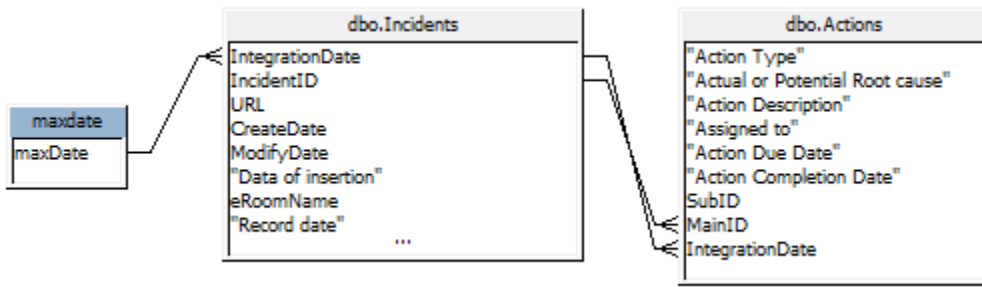


### Data Loading

ITC snapshots are created in SQLServer replicated database once a week (Friday) from eRoom database.

Anyway only the latest snapshot copy for each month is kept in the replicated sqlserver database.

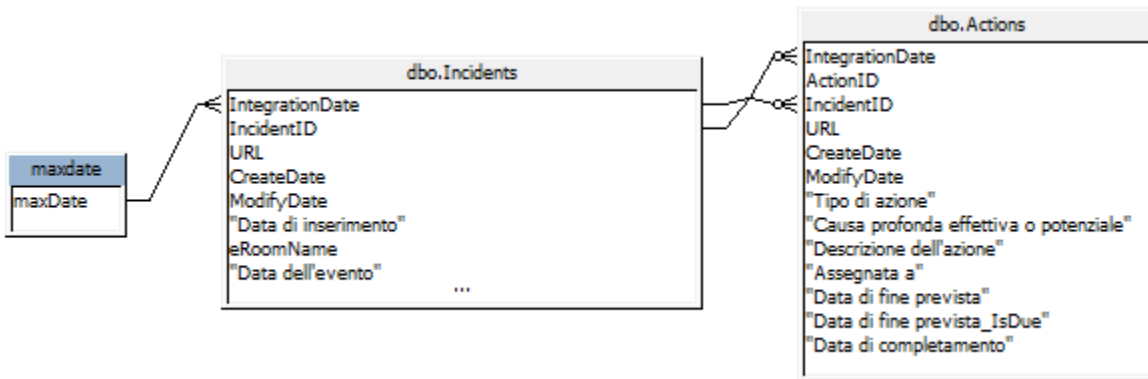
### Incident Tracking Halifax



**Data Loading**

ITH snapshots are created in SQLServer replicated database twice a week (Monday and Wednesday) from eRoom database. Anyway only the latest snapshot copy for each month is kept in the replicated sqlserver database.

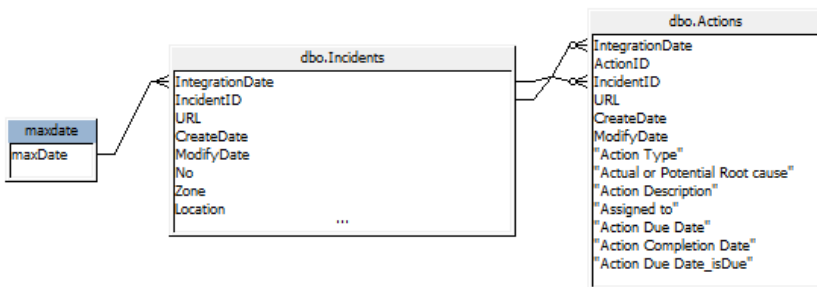
**Incident Tracking Ospiate**



**Data Loading**

ITO snapshots are created in SQLServer replicated database twice a week (Tuesday and Friday) from eRoom database. Anyway only the latest snapshot copy for each month is kept in the replicated sqlserver database.

**Novecare WW Incident Tracking**



**Data Loading**

NHQITC snapshots are created in SQLServer replicated database twice a week (Tuesday and Friday) from eRoom database. Anyway only the latest snapshot copy for each month is kept in the replicated sqlserver database.

**Universe Documentation**

## Incident Tracking Clamecy (ITC)

4 classes  
43 objects  
1 conditions  
3 tables  
1 alias  
2 joins  
0 contexts  
0 hierarchies

## Incident Tracking Halifax (ITH)

4 classes  
72 objects  
1 conditions  
3 tables  
0 alias  
2 joins  
0 contexts  
0 hierarchies

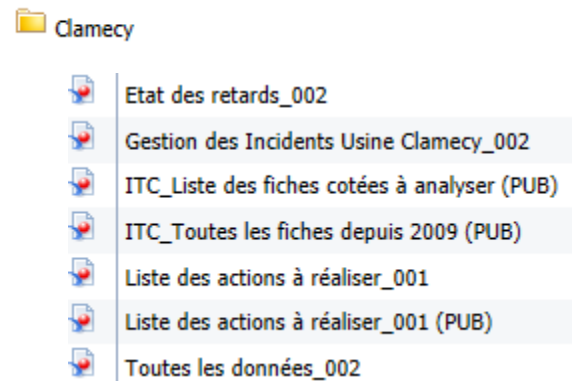
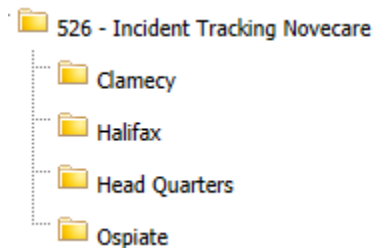
## Incident Tracking Ospiate (ITO)

## Novecare WW Incident Tracking (NHQITC)





4 classes  
68 objects  
1 conditions  
3 tables  
0 alias  
2 joins  
0 contexts  
0 hierarchies

## Main BI4 Core Reports








### BI4 core folder: [526 - Incident Tracking Novecare](#)





## Halifax

-  Halifax : List of incidents
-  Incident Management Halifax
-  My Pending actions : Halifax
-  Status of Delays : Halifax

## Head Quarters

-  HQ\_Actions assigned to me\_004
-  HQ\_Data control for CLOSED EVENTS\_001
-  HQ\_Data control for OPENED EVENTS\_001
-  HQ\_Effectiveness Verification\_003
-  HQ\_What's behind schedule\_004
-  Novicare HQ Incident Tracking\_001
-  Novicare HQ Incident Tracking\_002

## Ospiate

-  OSPIATE\_HQ\_Incident\_Tracking\_001
-  OSPIATE\_What is behind schedule\_001

## Useful links

[Link to UpToDate documentation of universes \(from 360 eyes\)](#)

[Link to Knowledge Transfer documents for Incident Tracking applications](#)

**\*\*\* This application is in the list of eRoom databases to be migrated to SQLServer 2008 \*\*\*** [see details ...](#)