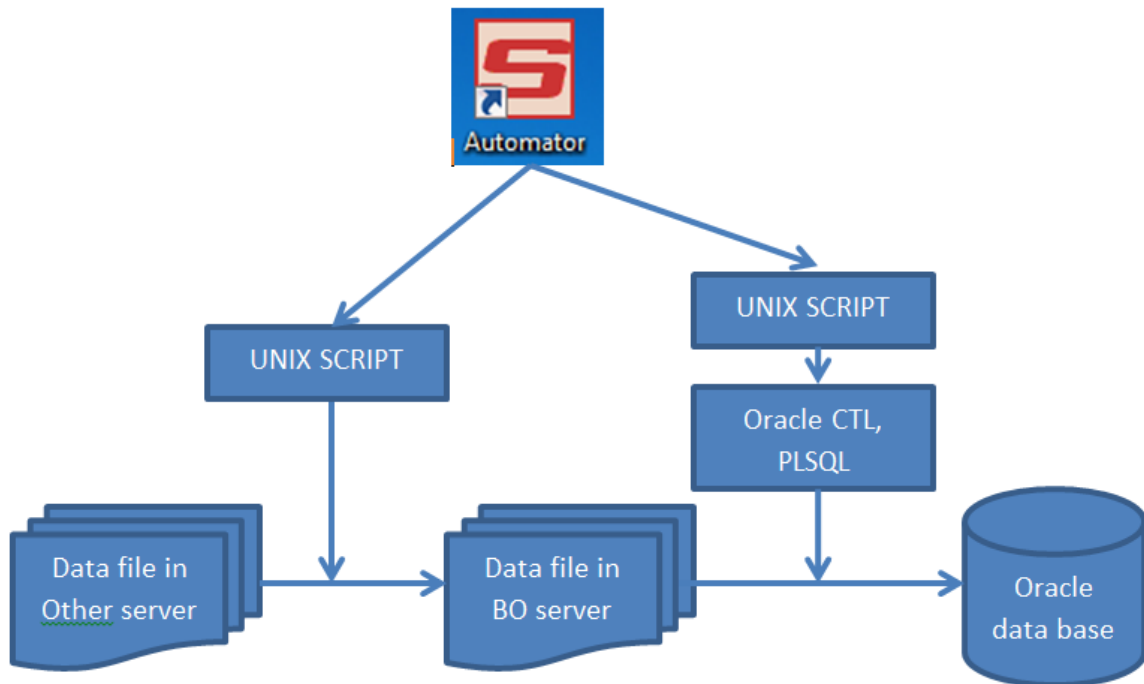


Exploitation - Daily

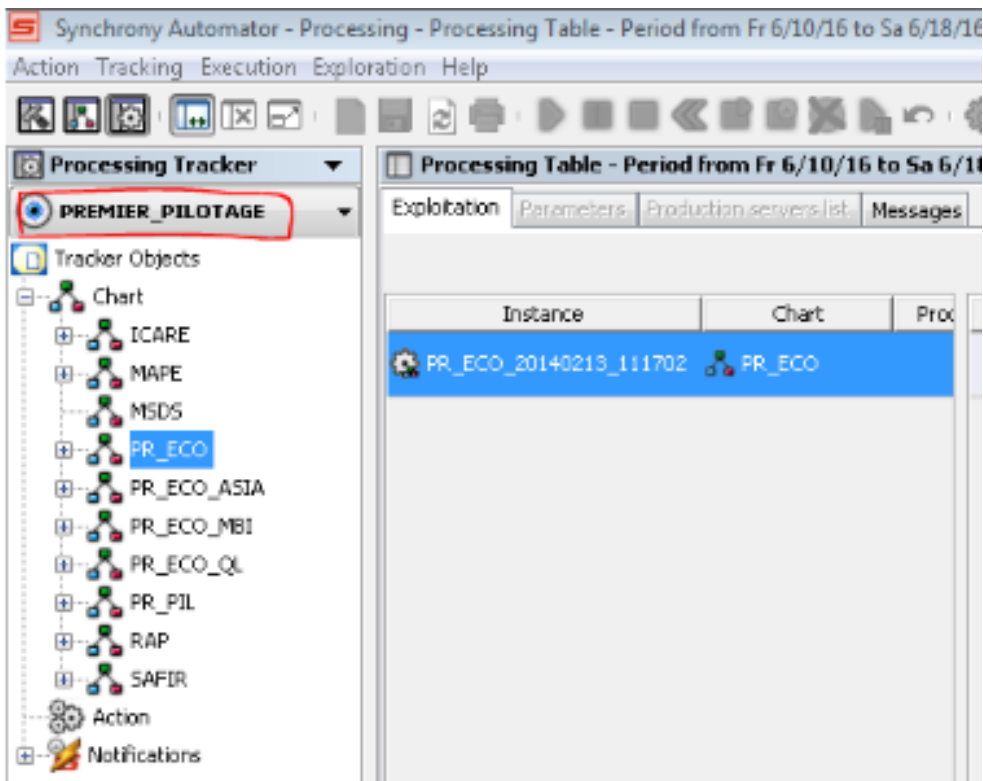
- OVERVIEW
 - ISIS & AUTOMATOR INSTALLATION
 - UNIX FOLDER
 - FTP Script & Setting:
 - PPE Unix and SQL script :
 - AUTOMATOR
 - In interface of Automator
 - ==> PPE GRAPH - PR_ECO*
 - ==> PPS GRAPH - PR_PIL
 - ==> Request to CHANGE the GRAPH
 - ISIS CONSOLE, Agent
 - Overview
 - I-SIS Agent and Portal management
 - EXPLOITATION Maintaining and Enhance
 - SQL & CTL Change
 - Unix Environment Change
 - Exploitation Monitor
-

OVERVIEW

BO Exploitation is the data loading, script environment management for application PPE, PPS, SAFIR, ICARE, RAP.



AUTOMATOR: Schedule of jobs (Maintain by Adagio team is-qpsupport@solway.com, team WQM at IBM)



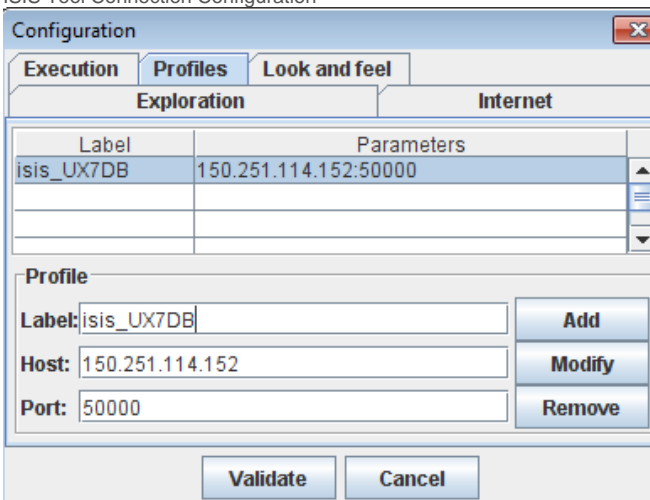
ISIS : maintain & transfer the SQL scripts, run the exploitation job by manual, Enhance the Unix Env

All the technical doc in : <https://drive.google.com/drive/folders/0BwtAGBKWM-z-djFZLXBXd3NKcW8>


ISIS & AUTOMATOR INSTALLATION

<https://drive.google.com/drive/folders/0B8RFN88sxfy5VGFXNUNmbV11bGM>

ISIS Tool Connection Configuration




Automator link to Production server:

 User :


Password :

Servers Parameters

 Server Host Name :


TCP Port :

Automator link to Dev server:

 User :

Password :

Servers Parameters

 Server Host Name :

TCP Port :

UNIX FOLDER

FTP Script & Setting:

/home/isis/ICles/FTP/V1/tab

Netrc : Maintain the Application name, Source server IP, FTP user ID, password.

Livraison : Maintain the file name and folder on Source Server.

/home/isis/ICles/FTP/V1/bin

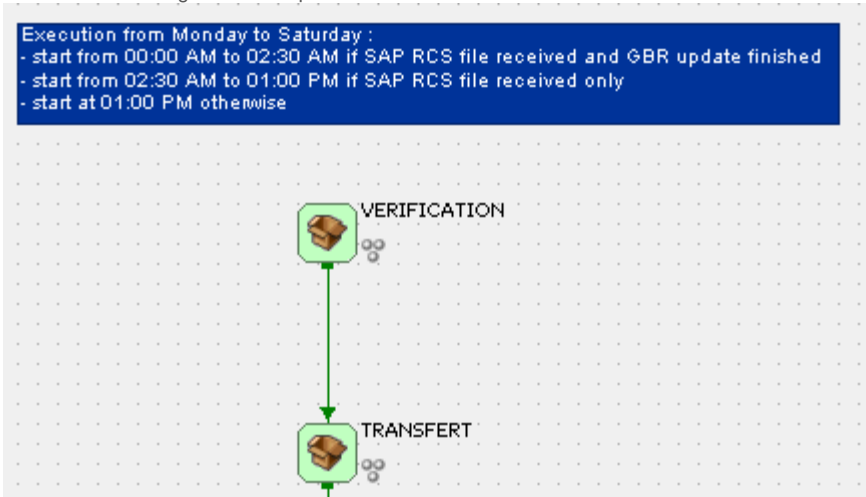
PC_TRANS_FTP_W : The unix script for FTP file transfer

For more detail read the topic "Add a new sftp transfer" in doc https://drive.google.com/file/d/14lu1nYyyQrc1-PMcy_vreOJNpgLQaKj7BlxSFnw2k0g/view

PPE Unix and SQL script :

/home/isis/ICles/PR_ECO/V1/CHAINE_EXPLOIT/bin

PC_CAPSULE : Setup the environment and call a Unix script
 PC_CHECK : Check the Oracle is active or not.
 It was run in the begin of PPE exploitation in Automator :

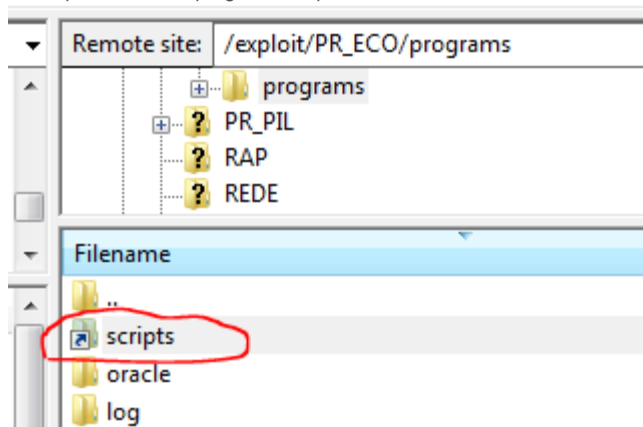


Object detail [VE_CHECK]

Runtime object's properties list

Properties	
Target Script File	<u>PC_CAPSULE</u>
Target Script Path	/exploit/PR_ECO/programs/scripts
Job Name	PR_ECO/VERIFICATION/VE_CHECK
PID number	37879942
OAC number	40659
Job Log Generation	On error
Value of parameter N° 0	<u>PC_CHECK</u>
System Name	ux4db

a shortcut 'script' is maintained in /exploit/PR_ECO/programs,
 So /exploit/PR_ECO/programs/script = /home/isis/ICles/PR_ECO/V1/CHAINE_EXPLOIT/bin



PC_REC_FLUX : Transfer & rename the file in '/exploit/arrivee' to '/exploit/PR_ECO/DW2/data/'

PC_PRE_TRAIT : Run PPE Pre-treatment.

PC_INTEG : Run PPE integ treatment.

.....

/home/isis/ICles/PR_ECO/V1
Save the plsql & ctl script

/exploit/arrive
Data File will first save in this folder

/exploit/PR_ECO/DW2/archive
Folder to Archive data file, will save one month data file only.

/home/isis/ICles/VERIF/V1/log
Exploitation log.

For more detail please read the doc : <https://drive.google.com/drive/folders/1cMglFRw0Lv44BBm5xhXiMdcVnf03AxKe>

AUTOMATOR

In interface of Automator

Configuration : Config the Automator env

Modeling : Create, Modify the Graph

Processing Tracher : Monitor the Automator Job

All the BO Graph are under category PREMIER_PILOTAGE

The screenshot displays the Automator interface. On the left, the 'Processing Tracker' sidebar shows a tree view of 'Tracker Objects' under the 'PREMIER_PILOTAGE' category. The objects include 'Chart', 'ICARE', 'MAPE', 'MSDS', 'PR_ECO', 'PR_ECO_ASIA', 'PR_ECO_MBI', 'PR_ECO_QL', 'PR_PIL', 'RAP', 'SAFIR', 'Action', and 'Notifications'. The 'PR_ECO' object is highlighted. The main window shows the 'Processing Table - Period from Fr 6/10/16 to Sa 6/18/16 - 1 Instances'. The table has columns for 'Instance', 'Chart', and 'Prod'. The first row shows 'PR_ECO_20140213_111702' with a 'PR_ECO' chart. The table also includes a calendar view for the period from Friday, June 10, 2016, to Saturday, June 18, 2016, with a 'Shift' of 05 days.

==> PPE GRAPH - PR_ECO*

Application :

TR_TRANS_FTP_PR_ECO : Transfer data file for other server to BO server

VERIFICATION : Check Oracle active or not

TRANSFERT : Transfer & rename the file in '/exploit/arrivee' to '/exploit/PR_ECO/DW2/data/'

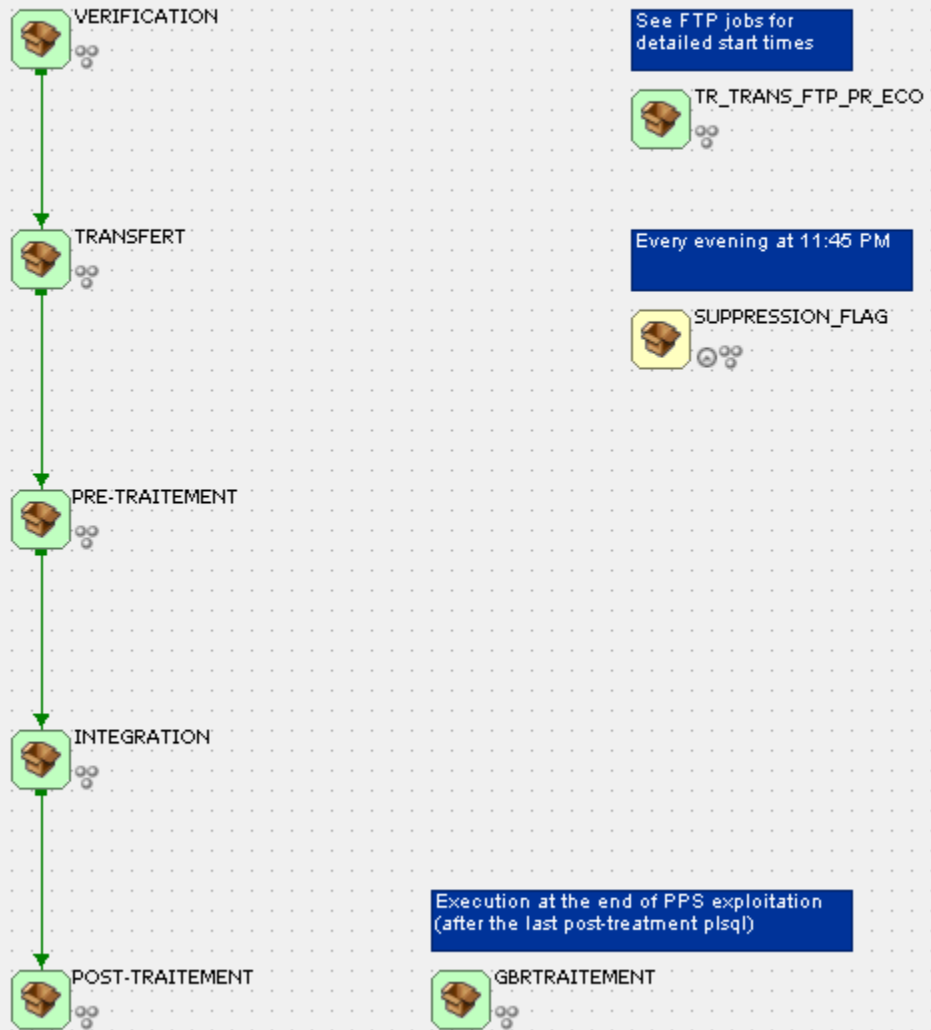
PRE-TRAITEMENT : Run the Pre-treatment script

INTEGRATION : Run the Integration-treatment script

POST-TRAITEMENT : Run Post treatment script

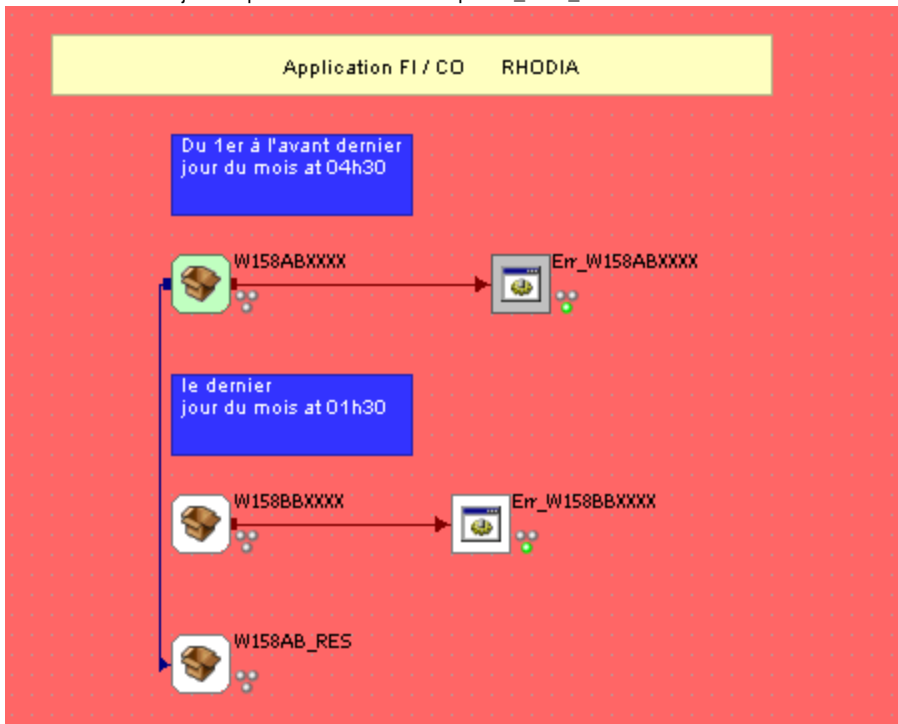
GBRTRAITEMENT : Trigger by PPS exploitation, transfer the GBR data from PPS to PPE

Execution from Monday to Saturday :
- start from 00:00 AM to 02:30 AM if SAP RCS file received and GBR update finished
- start from 02:30 AM to 01:00 PM if SAP RCS file received only
- start at 01:00 PM otherwise



PPE exploitation, Graph PR_ECO & PR_ECO_ASIA are trigger by RCS_FI_PREMIER_PILOTAGE in category EXPLOITATION_RCS

W158ABXXXX Run in every day except last day of month, It will generate 2 month data(current month and previous)
W158BBXXXX Run in last day of month, it will generate YtD data.
W158AB_RES Run in first 3 day of the month, it work for Asia month end closing.
This job will provide the data for Graph PR_ECO_ASIA



Graph PR_ECO_MBI, load the integrate margin data, which generate by BW(WBP) PC
Graph PR_ECO_QL, load the QL data, at 13:00 FR time

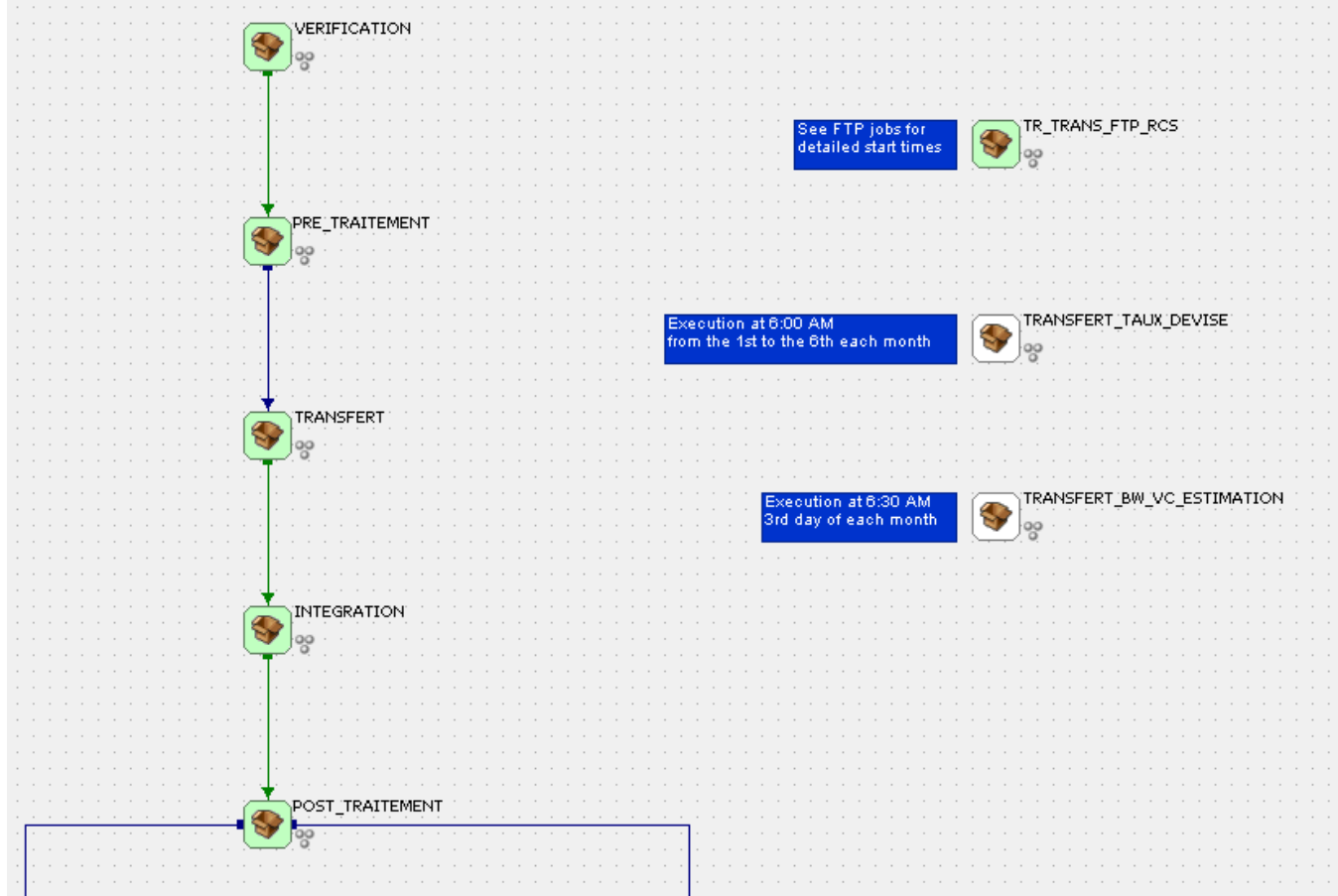
==> PPS GRAPH - PR_PIL

Application :

TRANSFERT_TAUX_DEVISE, transfer the exchange rate data file from BFC system

TRANSFERT_BW_VC_ESTIMATION, transfer the value stream data from BW.

Execution from Monday to Saturday :
- start from 00:00 AM to 01:00 PM if SAP RCS file received only
- start at 01:00 PM otherwise



PPS exploitation, Graph PR_PIL are trigger by RCS_OC_PREMIER_PILOTAGE in category EXPLOITATION_RCS

==> Request to CHANGE the GRAPH

Login in Solution Manager, Create the SLV Request, Set Project ZGEN

SLV Req. for change: 700004923, Automator - T&E jobs

Save | Display | Cancel | Edit | New | New from Template | Create Follow-Up | Actions | More

Details | Edit

General Data	Change Planning
ID: 700004923	Approval Procedure: SLV Approval Procedure for RFC
Title: Automator - T&E jobs	Project: ZGEN
Requester: FeeYen PANG	Category: NON SAP Servers

Set Document type to SLV Admin Change

Scope | Edit

Actions	Document Type	Status	Document ID	Document Description
	SLV Admin Change	Closed	500000335	Automator - T&E jobs

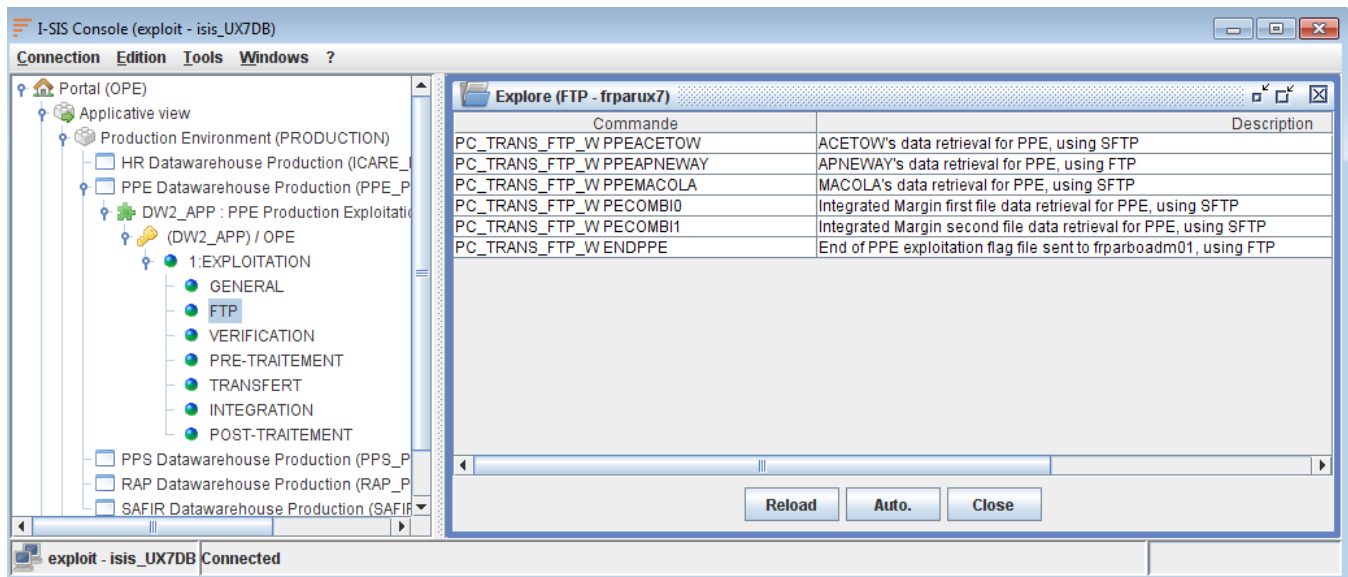
And write down the detail what you request.

At last send a additional e_mail to Adagio team(is-qpsupport@solvay.com), ask for follow up.

ISIS CONSOLE, Agent

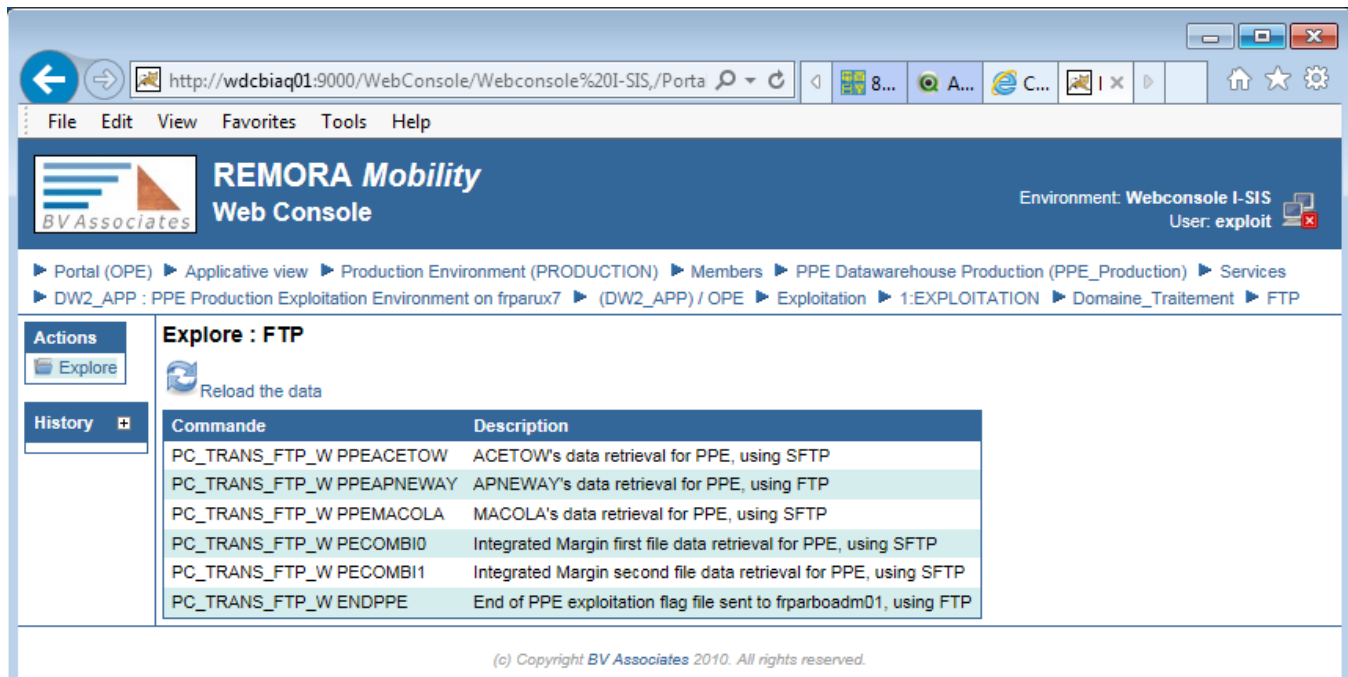
Overview

The I-SIS Console



Web console :

<http://wdcbiaq01:9000/WebConsole>



I-SIS Agent and Portal management

Read the doc https://drive.google.com/file/d/14lu1nYyyQrc1-PMcy_vreOJNpgLQaKj7BixSFnw2k0g/view

When the I-SIS Agent is active, the Unix script environment was enhance,
For example in Unix script we can code "Select from Table_Flux" to get the data in table format in file /home/isis/ICles/PR_ECO/V1/COMMUN/tab
/Table_Flux

```
isis@solax005:/home/isis > Select from Table_Flux
SEP=':'@@FORMAT='Type_Flux:Flag_Rec:Flag_Priorite:Nom_Machine:Nom_Flux
:$Nom_Pilotage'@@SIZE='3s:1n:1s:15s:15s:15s:15s:15s'@@HEADER='Tables
txt:2:1:frparwp1:PEMBLOC:WP1400::PE SAP
txt:1:1:hades:PECO:ACETOW::PE ACETOW
txt:2:1:pf1sapr3:PECO:MACOLA::PF1 MACOLA
txt:1:1:sgamnwb01:PECO:APNEWAY::PE APNEWAY
txt:1:1:chemlogics:PECO:CHEMLOGICS::PE CHEMLOGICS
txt:0:1:chemplex:PECO:CHEMPLEX::PE CHEMPLEX
txt:0:1:frparwbp:PECO:MBIBW::MBI BW
```

[EXPLOITATION Maintaining and Enhance](#)

SQL & CTL Change

Read the Doc "Application_Evolution_Management" <https://drive.google.com/file/d/1DMhchG3DtyfRMkRG6C2cW9TGxvjsEdDA/view>

Unix Environment Change

Read the topic "Usual maintenance actions" in Doc https://drive.google.com/file/d/14lu1nYyyQrc1-PMcy_vreOJNpgLQaKj7BlxSFnw2k0g/view

Exploitation Monitor

Read the Doc "Exploitation_Management" https://drive.google.com/file/d/1R_WhoNZtJDKX8ZJ6p4iCa9kXHcL_wTWW/view

Workflow history

This view shows the 5 most recent entries. The complete workflow log is available from the 'Document Activity' menu item.

From Jun 09, 2016 to May 25, 2025	Actor	Type	Activity	Version
	Laurence De Zeeuw , SWAMI-ext, Shivani Siddhrameshwar , AVIDI-ext, Jayasri and Zhizhong Lu-Ex	Edit	multiple updates from Laurence De Zeeuw , SWAMI-ext, Shivani Siddhrameshwar , AVIDI-ext, Jayasri and Zhizhong Lu-Ex	
Jun 03, 2016	Zhizhong Lu-Ex	Edit	created the page at 5:19 am	