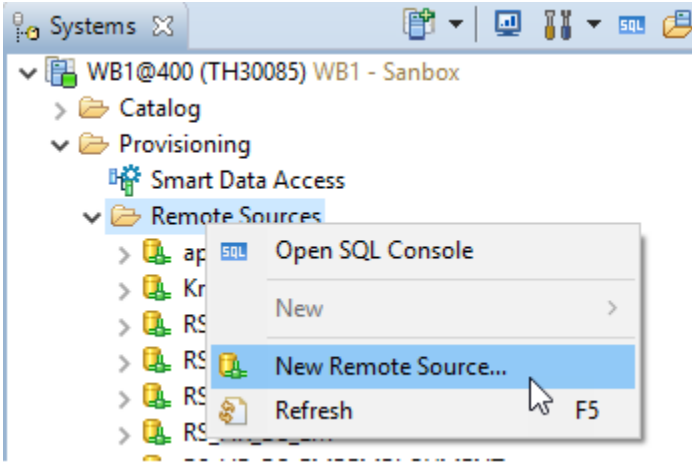


How to Create Data Source with BigQuery

- [Create Remote Source \(Create by Adagio\)](#)
- [Create Source system with Big Data \(Create by Adagio\)](#) we should not create a new source system anymore Use SDI instead)
- [Create Data source](#)

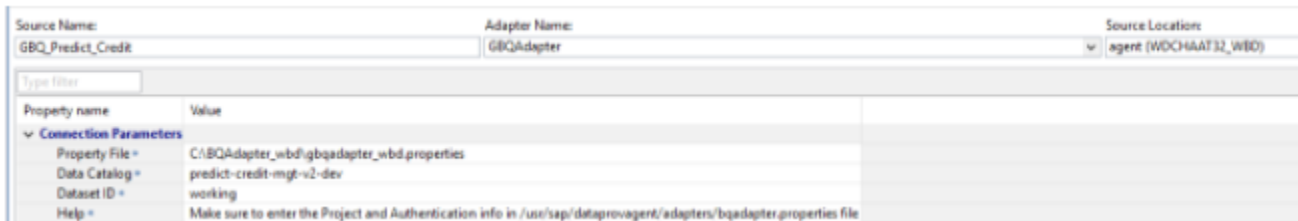
Create Remote Source (Create by Adagio)

1. At HANA studio - HANA modeler perspective, go to provisioning > New Remote Source

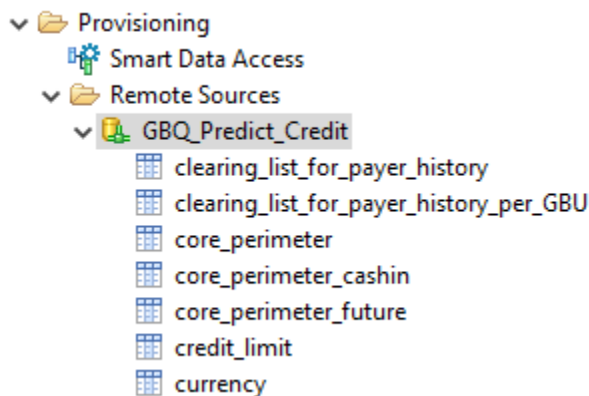


2. Enter detailed information

The name of remote source should starting with RS_



3. After connected, available tables will display on the remote source

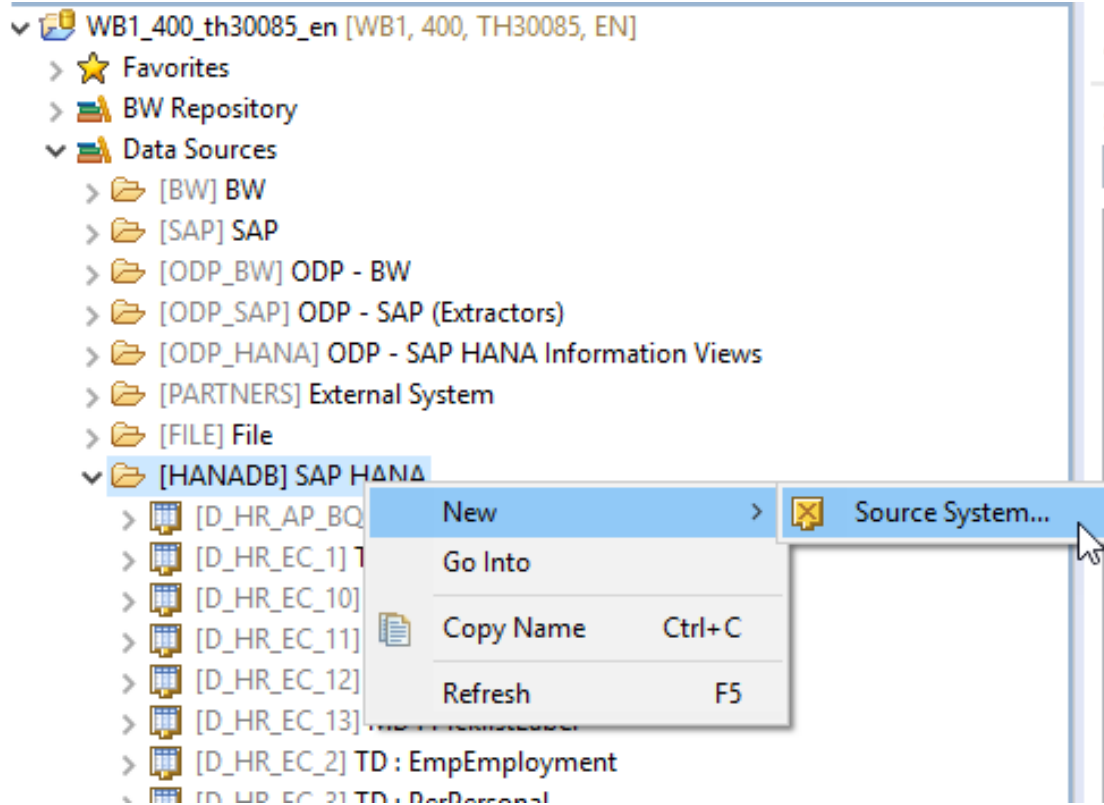


4. Then, run SQL command to grant privilege to authorization team and to development role otherwise, other developer will not possible to activate the datasource that linked to this remote source in each systems (development, quality, pre-production, production systems)

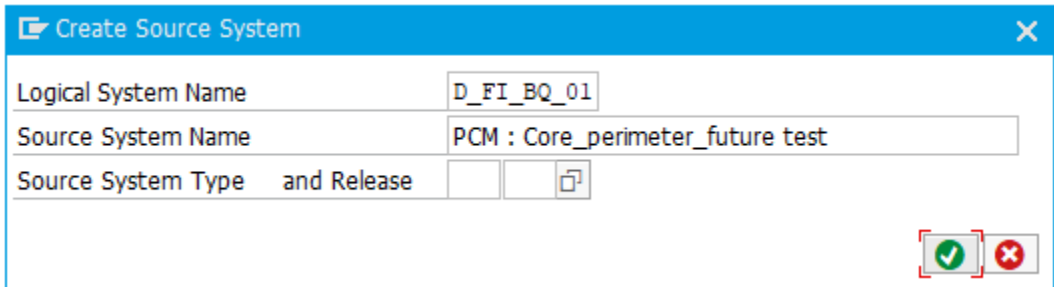
- GRANT CREATE VIRTUAL TABLE, CREATE REMOTE SUBSCRIPTION, PROCESS REMOTE SUBSCRIPTION EXCEPTION, ALTER ON REMOTE SOURCE "Name of Remote source" TO SDI_ADMIN WITH GRANT OPTION;
- GRANT CREATE VIRTUAL TABLE, CREATE REMOTE SUBSCRIPTION, PROCESS REMOTE SUBSCRIPTION EXCEPTION, ALTER ON REMOTE SOURCE "Name of Remote source" TO ZSLV_SDI_DEVELOPER;

Create Source system with Big Data (Create by Adagio we should not create a new source system anymore [Use SDI instead](#))

- 1. Need to create remote source first if it is not existing
- 2. Go to BW model perspective - Data Sources, right click and New Source System



- 3. It will go to SAP GUI, enter information name regarding to naming convention



- 4. Selection connection type "SAP HANA Smart Data Access", then enter the remote sources

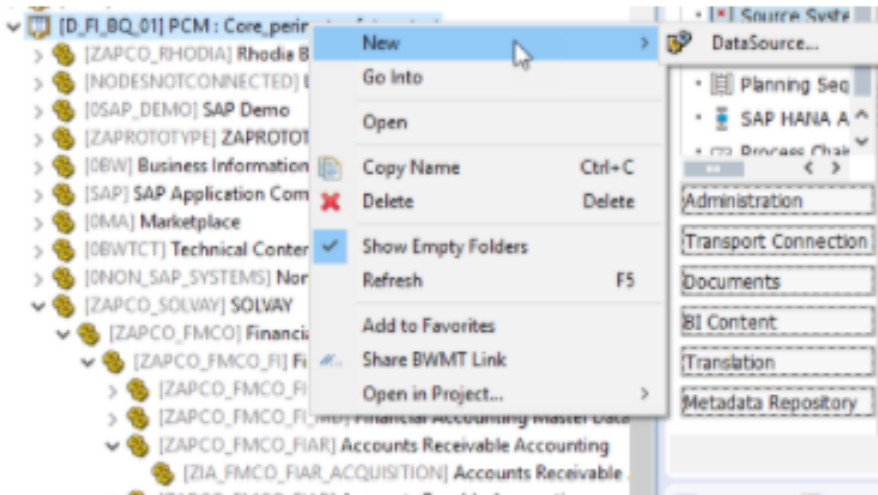
SAP HANA Connection Parameters	
Source system	D_FI_BQ_01
Connection Type	SAP HANA Smart Data Access
Remote Source	GBQ_Predict_Credit
Path Prefix	

5. After execute

✔ Source system D_FI_BQ_01 creation successfully finished

Create Data source

1. Right click on the infoarea and choose New



2. Select source system and package in case need to install

New DataSource

DataSource

BW Project:* WBD_110_th30085_en_1 Browse...

Package:* STMP Browse...

Source System:* D_FL_BQ_01 Browse...

Source System Description: PCM : Core_perimeter_future test

Source System Type: HANA

? < Back Next > Finish Cancel

3. Select "Proposal from SAP HANA Table or View"

New DataSource

Select Template or Source object

Source System: D_FL_BQ_01

Source System Type: HANA

None

Copy from DataSource (Same Source System Only)

Proposal from Operational Data Provider

Proposal from SAP HANA Table or View

Proposal from SAP HANA Native DataStore Object

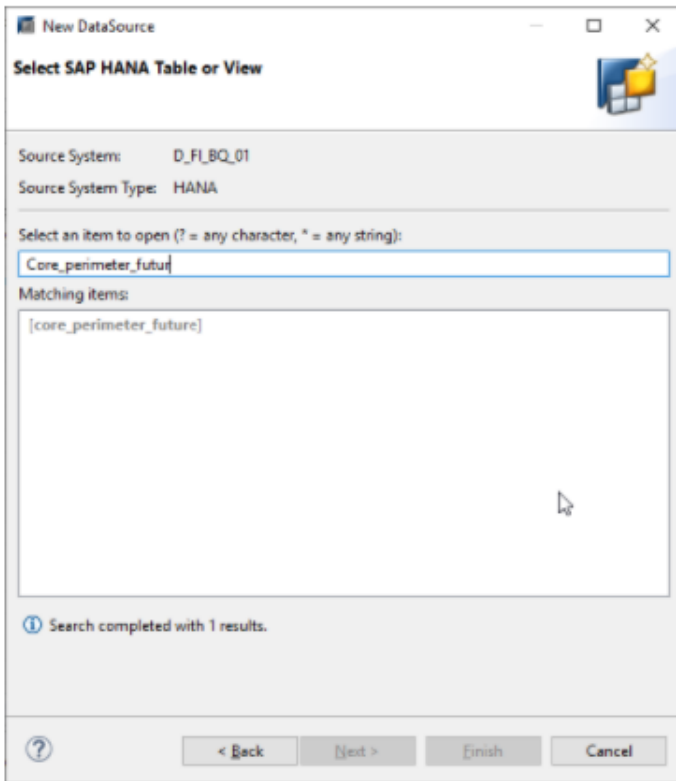
DataSource as Template

InfoSource as Template

InfoProvider as Template

? < Back Next > Finish Cancel

4. Search on the table of the datasource



5. Identify the location of the application component and name the data source ID and text.

Also the type (Transactional data / Master)

