

BW RTR - Profit and Loss by sales order (P&L) /\ obsolete !/

\



The new wiki link for this data flow is here:

[BW RTR - Profit and Loss by sales order \(P&L\)](#)

Please update the doc there and no longer here.



- General presentation
 - Objective of the application
 - Usage information
 - History
- Roles & Access
 - Roles and access
 - Authorization objects
- Dataflow overview
 - CPCOPA03
 - CV_FMCO_COPA_PL_BFC_0001:
 - CV_FMCO_COPA_PL_NONERP_0001:
 - CV_FMCO_COPA_PL_SOLVAY_0001:
 - CV_FMCO_COPA_PL_RHODIA_0001:
 - Functional and Technical rules on Workbench + Reporting
 - Rules & Explanations
 - Dependencies with other applications
- Data loadings
 - Info providers and objects loaded
- Reporting
 - Queries End User Documentation
 - Main queries
 - Main functionalities
 - Broadcast
- Maintenance
 - Known bugs
 - Recurring procedure
 - Planned Evolution

General presentation



The new wiki link for this data flow is here:

[BW RTR - Profit and Loss by sales order \(P&L\)](#)

Please update the doc there and no longer here.



Objective of the application

The objective is to have a new P&L dataflow, same as original (MVCOPA01 & queries BW_QRY_MVCOPA01_0004 + BW_QRY_MVCOPA01_0007) with four new fields:

- Sales Order
- Item Order
- Market Cluster
- Team Cluster.

We created a new hana data flow (calculation views and composite provider) to avoid to store the data.

We not added the new fields in MVCOPA01 flow, because the volume would have been too large.

Usage information

History

Roles & Access

Roles and access

List of application role + menu role and explanation if we have several applications role with specials rules.

Role Code	Role Description	Explanation
ZR_RCS_CA_M12	PL - P&L Reporting	Role menu

Two workbooks was added to the role menu:

description	non technique
PL - P&L Reporting	ZR_RCS_CA_M12
P&L Query	BW_WBK_PL_0001
P&L Monthly Query	BW_WBK_PL_0002
P&L Reconciliation Query	BW_WBK_PL_0003
P&L Integrated Margin - CM/GM Query	BW_WBK_PL_0004
P&L Integrated Margin - Contribution Margin Query	BW_WBK_PL_0005
P&L Integrated Margin - Freight & Duties Costs Tables	BW_WBK_PL_0006
P&L Integrated Margin - Monthly CM/GM Query	BW_WBK_PL_0007
P&L - Fixed Cost analysis	BW_WBK_PL_0008
P&L Monthly Query (Month selected)	BW_WBK_PL_0009
P&L Integrated Margin - Monthly CM/GM Query (Month Selected)	BW_WBK_PL_0010
P&L Query - Period Comparison	BW_WBK_PL_0011
P&L Integrated Margin - IM Cost Unit query	BW_WBK_PL_0013
P&L Integrated Margin - CM/GM Query By Sales Orders	BW_WBK_PL_0020
P&L Integrated Margin - Monthly CM/GM Query by Sales Orders	BW_WBK_PL_0021
QM - Quality Management	ZR_RCS_CA_M14

Authorization objects

List of autorisation objects mandatory for the application.

BW Catalog of Roles:

<https://drive.google.com/file/d/1ibLr8rVvsplr8UX49hVH0Rx-m3Ko5Ynk9IOqftJ-F2M/view>

Dataflow overview

The dataflow is composed by 4 calculation views and one composite provider.

Calculation view:

- CV_FMCO_COPA_PL_SOLVAY_0001
- CV_FMCO_COPA_PL_RHODIA_0001
- CV_FMCO_COPA_PL_NONERP_0001
- CV_FMCO_COPA_PL_BFC_0001

In the file below you can find the providers used as sources in calculations view and origin of each fields + filters applied.

Inputs parameters used in calculations views:

- IP_CALMONTH_FROM
 - Single entry
 - Not Mandatory
- IP_CALMONTH_TO
 - Single entry
 - Not Mandatory
- IP_COMPCDE
 - Multiple entries
 - Not Mandatory
- IP_CALYEAR
 - Single entry
 - Not Mandatory
- IP_PLANT
 - Multiple entries
 - Not Mandatory

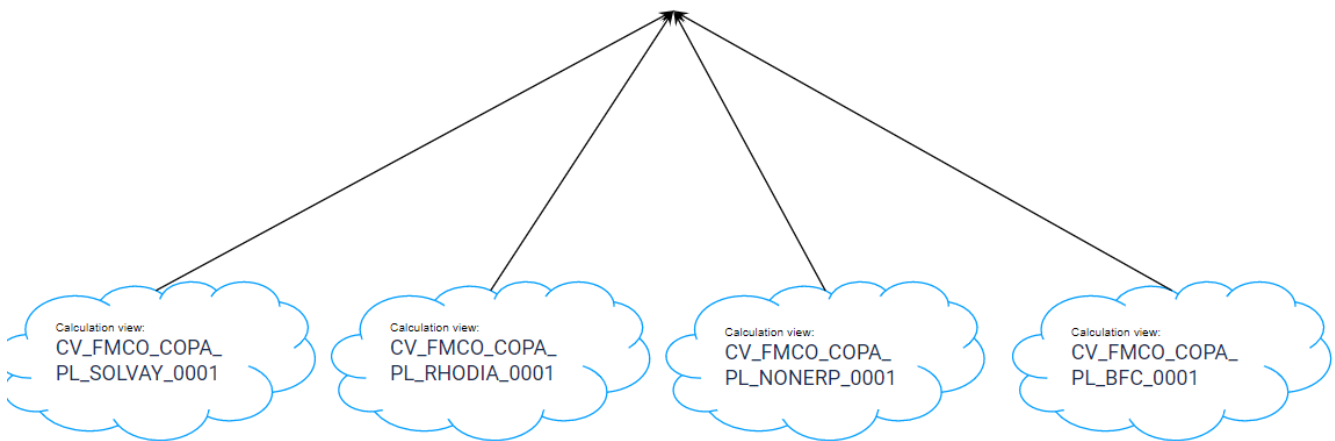
Composite provider:

CPCOPA03

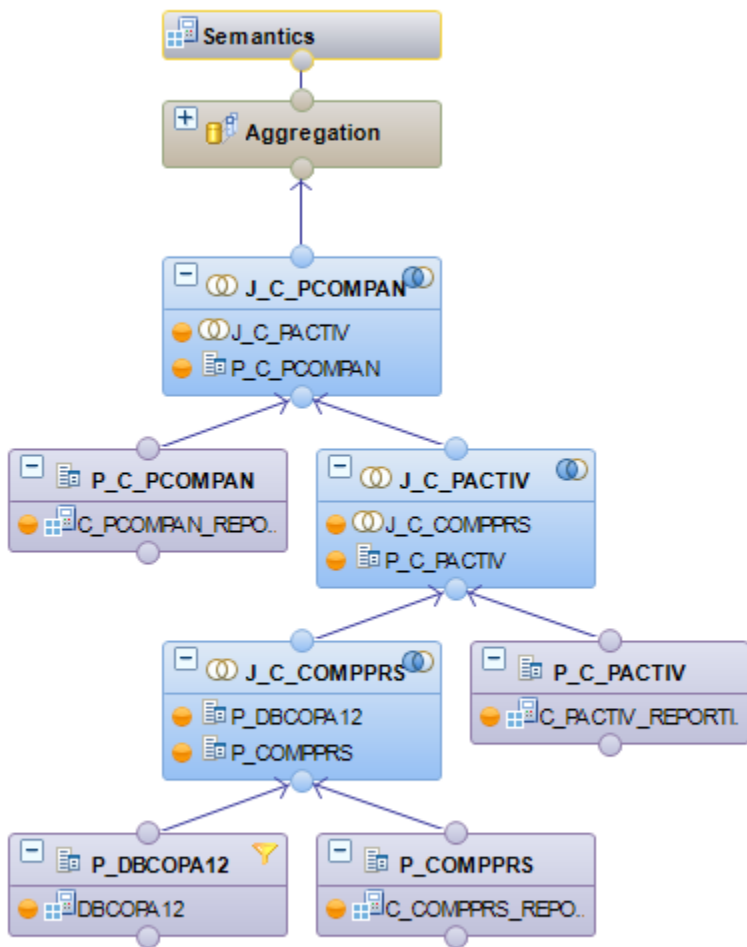
Data Flow



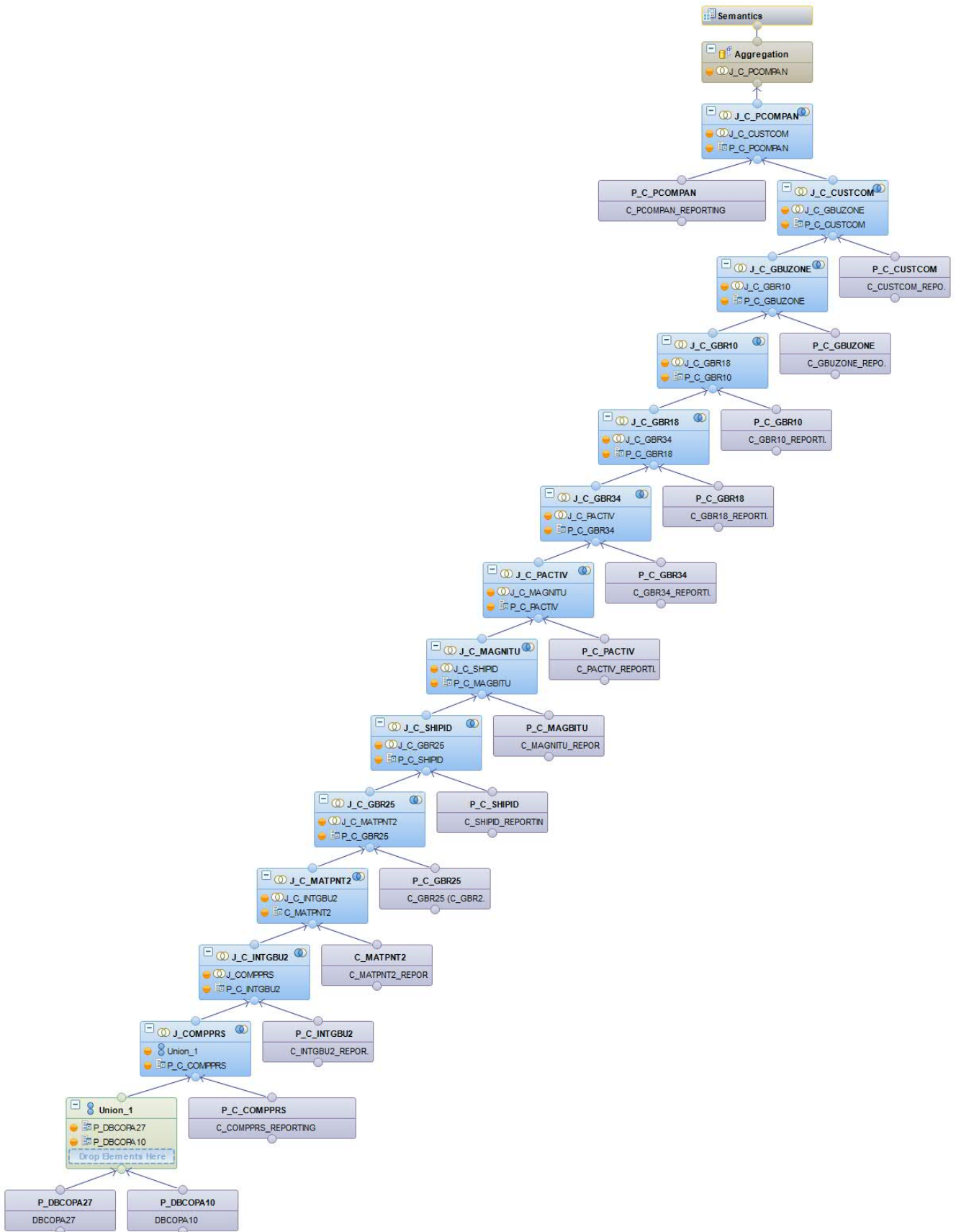
CPCOPA03
Profitability Analysis: COPA - P&L



CV_FMCO_COPA_PL_BFC_0001:



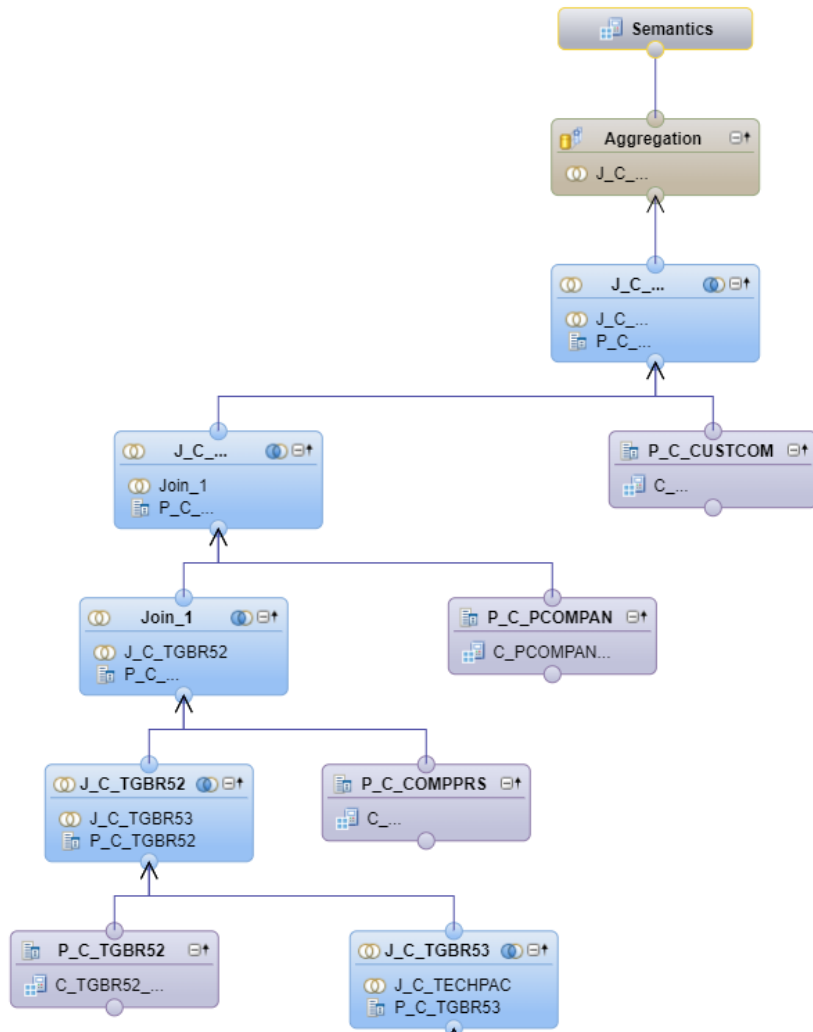
CV_FMCO_COPA_PL_NONERP_0001:



CV_FMCO_COPA_PL_SOLVAY_0001:

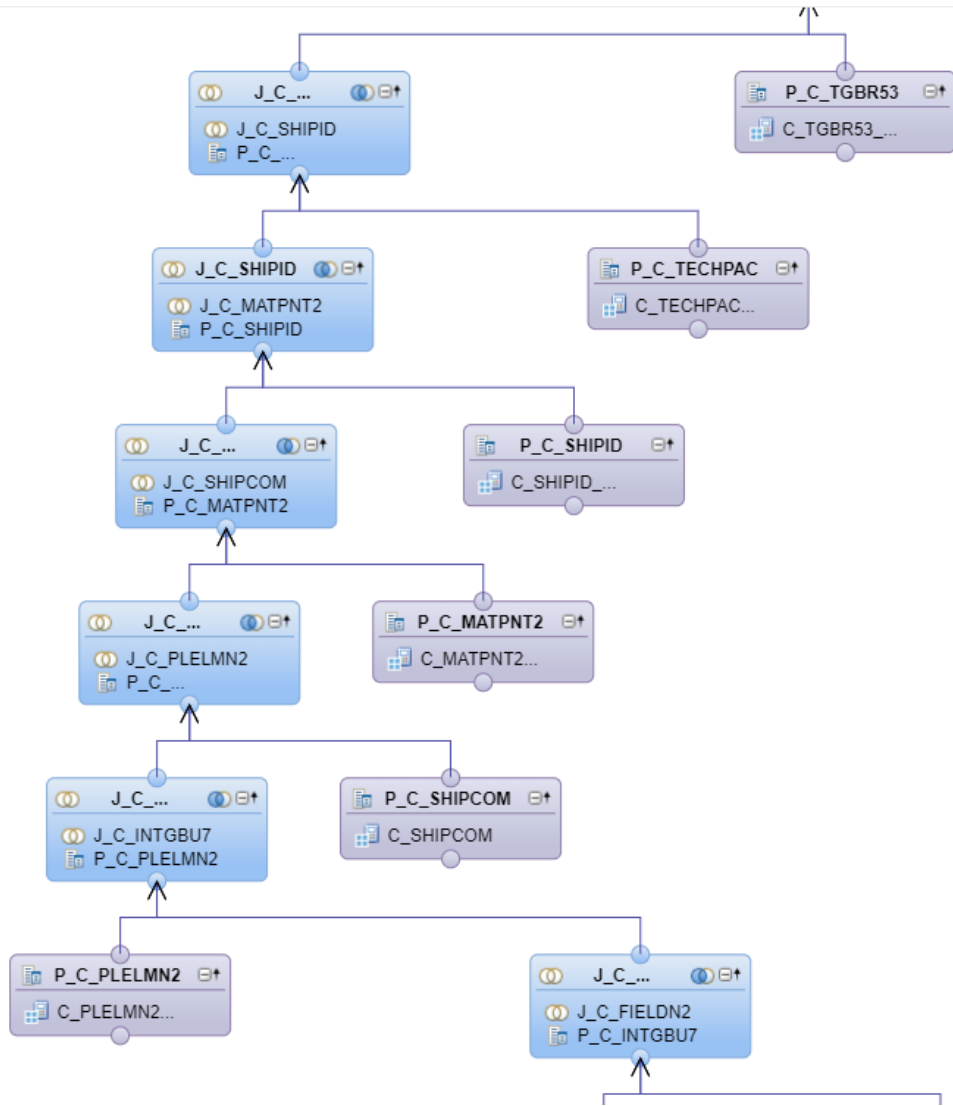


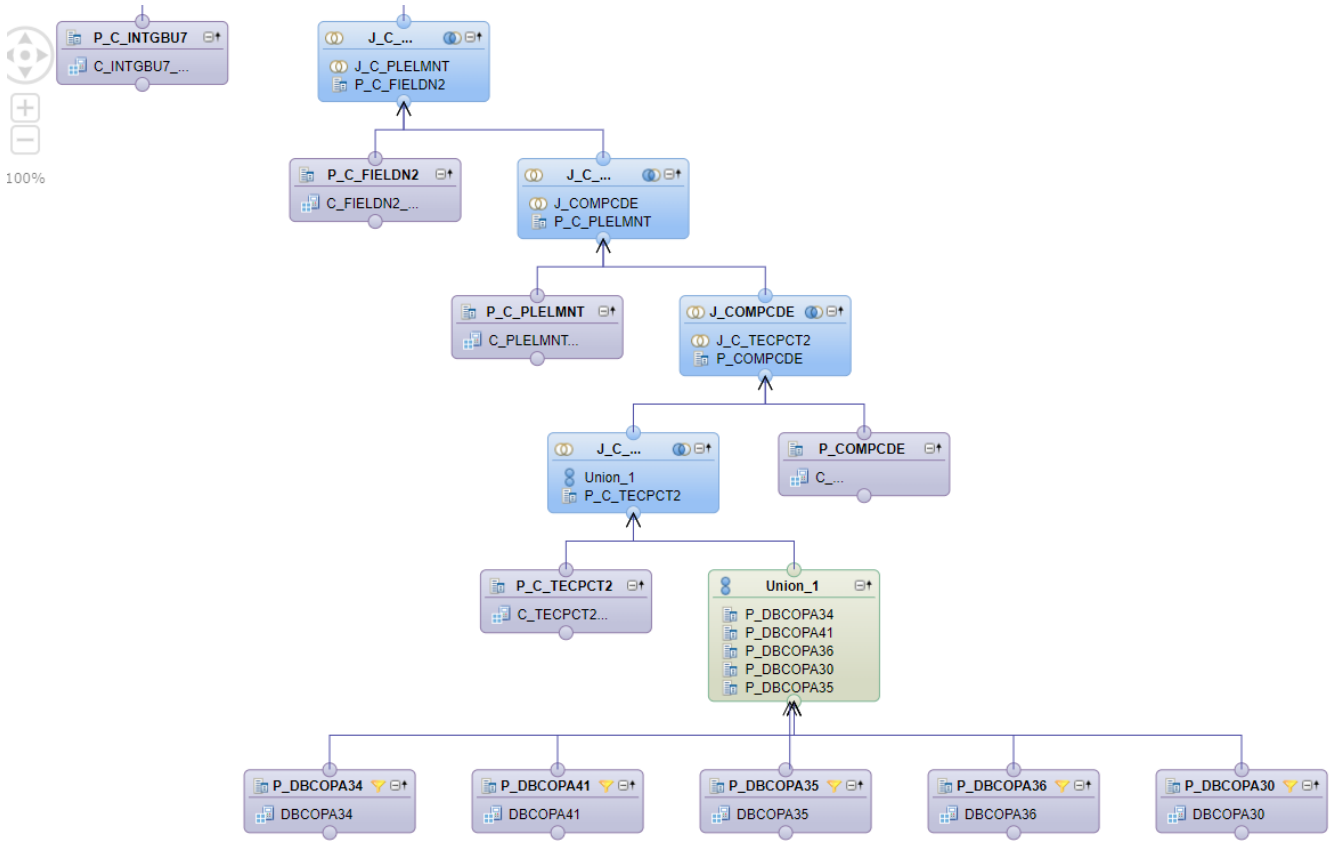
100%



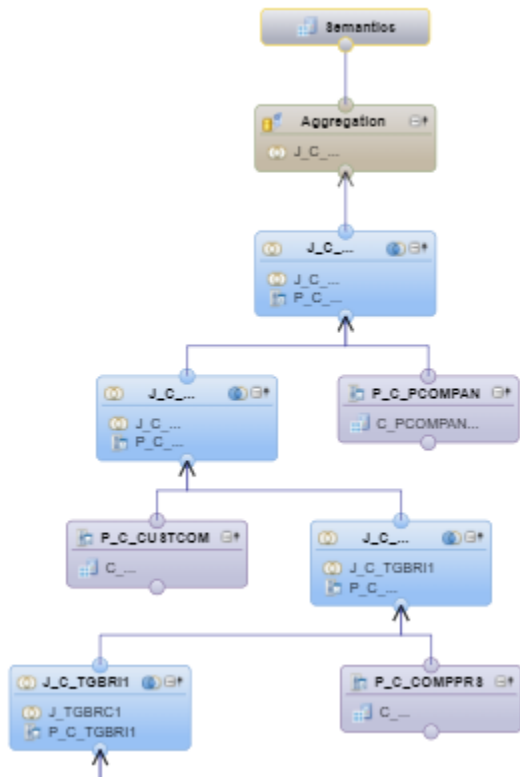


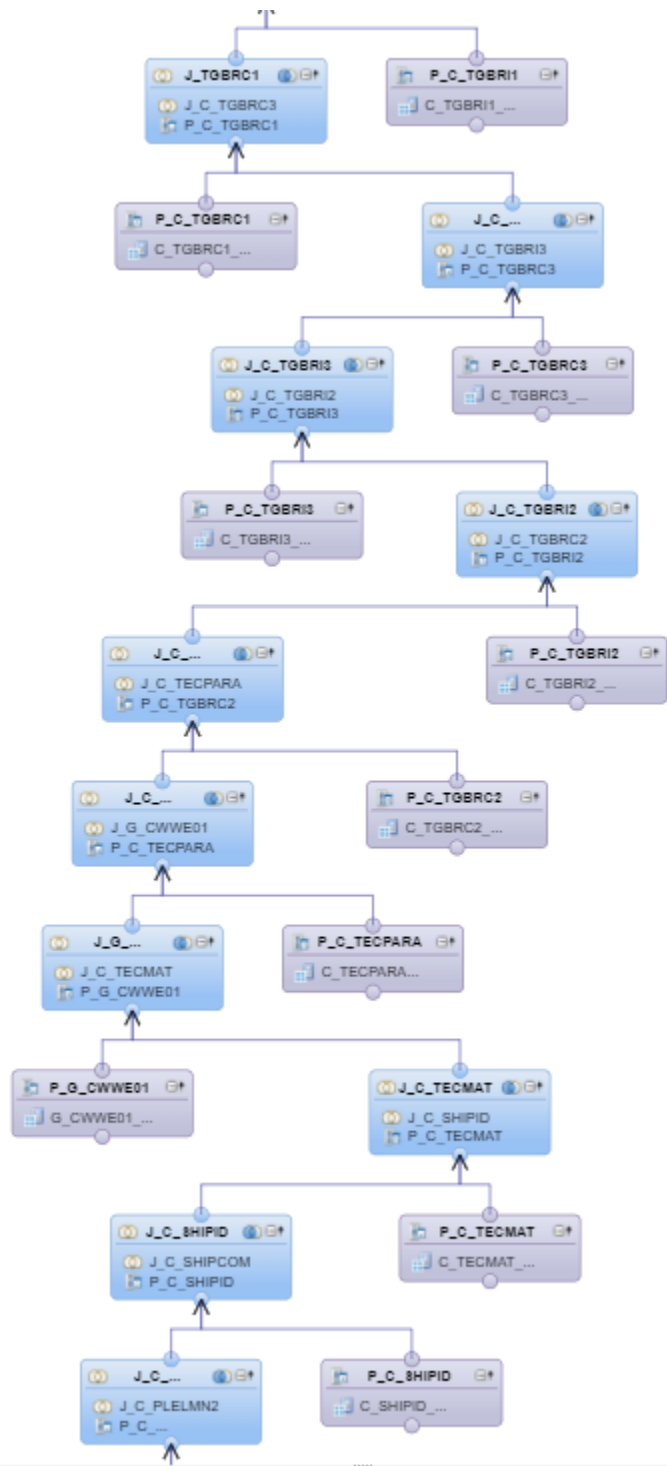
100%

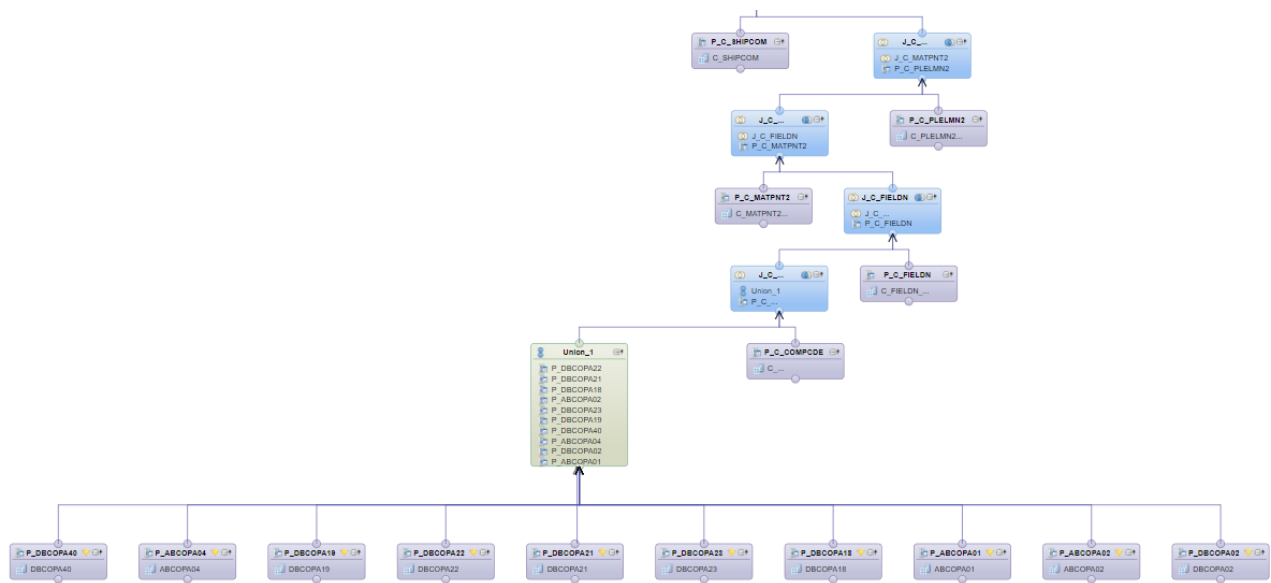




CV_FMCO_COPA_PL_RHODIA_0001:







Sales order and Item for solvay DSO.

The objective was to add sales order and item in P&L reporting, for that we had to modify three existing DSO:

DBCOPA23:

- Modification of semantic key "C_KEY02" to add sales order & sales order item in the concatenation (not possible to add new keys, so we used concatenate fields).
- Add Sales_order and Item as data fields

DBCOPA34

- Modification of semantic key "C_KEY02" to add sales order & sales order item in the concatenation (not possible to add new keys, so we used concatenate fields).
- Add Sales_order and Item as data fields

DBCOPA41

- Sales order and sales order item already present in DSO, just need to adapt the expert routine in transformation TRSF: ODSO DBCOPA35 -> ODSO DBCOPA41 to use them for the lookup with DBCOPA34.

```

LOOP AT ITB_DBCOPA34 INTO S_COLLECT_SOLVAY
  WHERE /BIC/C_PLELMN2 = S_COLLECT_PL
  AND /BIC/C_COMPDE = <SOURCE_FIELDS>-/BIC/C_COMPDE
  AND CURTYPE = <SOURCE_FIELDS>-CURTYPE
  AND /BIC/C_CUSTID = <SOURCE_FIELDS>-/BIC/C_CUSTID
  AND /BIC/C_PAYER = <SOURCE_FIELDS>-/BIC/C_PAYER
  AND /BIC/C_SHIPID = <SOURCE_FIELDS>-/BIC/C_SHIPID
  AND PROFIT_CTR = <SOURCE_FIELDS>-PROFIT_CTR
  AND /BIC/C_MATGR1 = <SOURCE_FIELDS>-/BIC/C_MATGR1
  AND /BIC/C_ZZWWE41 = <SOURCE_FIELDS>-/BIC/C_ZZWWE41
  AND /BIC/C_DISTCHN = <SOURCE_FIELDS>-/BIC/C_DISTCHN
  AND /BIC/C_DIVISN = <SOURCE_FIELDS>-/BIC/C_DIVISN
  AND /BIC/C_SAL_ORG = <SOURCE_FIELDS>-/BIC/C_SAL_ORG
  AND /BIC/C_INCOTRM = <SOURCE_FIELDS>-/BIC/C_INCOTRM
  AND /BIC/C_PMNTRM2 = <SOURCE_FIELDS>-/BIC/C_PMNTRM2
  AND CALMONTH = <SOURCE_FIELDS>-CALMONTH
  AND /BIC/C_BILLYP = <SOURCE_FIELDS>-/BIC/C_BILLYP
  AND /BIC/C_BUSAREA = <SOURCE_FIELDS>-/BIC/C_BUSAREA
  AND /BIC/C_SAL_GRP = <SOURCE_FIELDS>-/BIC/C_SAL_GRP
  AND /BIC/C_WWPIF = <SOURCE_FIELDS>-/BIC/C_WWPIF
  AND /BIC/C_MATNR2 = <SOURCE_FIELDS>-/BIC/C_MATNR2
  AND /BIC/C_PLANT = <SOURCE_FIELDS>-/BIC/C_PLANT
  AND DOC_NUMBER = <SOURCE_FIELDS>-DOC_NUMBER
  AND S_ORD_ITEM = <SOURCE_FIELDS>-S_ORD_ITEM.

```

No reload for historical data was done for these DSO, sales order and item started to be loaded the change in January 2022.

Functional and Technical rules on Workbench + Reporting

Rules & Explanations

Dependencies with other applications

Data loadings

Info providers and objects loaded

No loading, only calculations views are used.

Reporting

Queries End User Documentation

Main queries

BW_QRY_CPCOPA03_0001 equivalent of query BW_QRY_MVCOPA01_0004, same fields, same CKF and RKF, only sales order, sales order item, market cluster and team cluster added in free characteristics.

BW_QRY_CPCOPA03_0002 equivalent of query BW_QRY_MVCOPA01_0007, same fields, same CKF and RKF, only sales order, sales order item, market cluster and team cluster added in free characteristics.

QVSBS_BW_QRY_CPCOPA03_0001 equivalent of query QVSBS_BW_QRY_MVCOPA01_0004, same fields, same CKF and RKF, only sales order, sales order item, market cluster and team cluster added in free characteristics.

About CKF and RKF we keep same incrementation number, for exemple BW_CKF_CPCOPA03_0001 it's same thing (for CPCOPA03) as BW_CKF_MVCOPA01_0001 (for MVCOPA01).

The only difference between CKF and RKF between MVCOPA01 and CPCOPA03, it's in CPCOPA03 we use "[VF_CCDE_COMPPRS_0001] TING Company" instead "[VF_C_COMPCDE__C_COMPPRS_0001] TING Company".

C_COMPCDE__C_COMPPRS in MVCOPA01 has different sources in the assignment, so we redo the same rule in calculations views in field CCDE_COMPPRS.

You can find the documentation on CKF and RKF here:

<https://drive.google.com/file/d/1cpZbgFncKiWOteJCc7gEknvZtMdq3Z8e/view>

Main functionalities

Broadcast

Maintenance

Known bugs

To open calculations view Rhodia and Solvay, it's necessary to use WEBIDE, it's not possible to open them with hana studio due to a lack of memory.

<https://wbdhana.eua.solvay.com:4300/sap/hana/ide/editor/>

Recurring procedure

Planned Evolution