

# General Ledger Account (Local Chart of Accounts)

[Business Term Status](#) | [Business Term Definition](#) | [Roles](#) | [Data Sources, Type and Classification](#) | [Data Protection and Update Frequency](#) | [Working Instruction](#) | [Process Flows](#) | [Related Business Terms](#)

## Business Term Status

---

The Business Term is currently **validated** by the Data Governance Committee.

## Business Term Definition

---

The statutory general ledger accounts are used to record financial transactions and are aggregated into the local financial statements. These accounts are not reflected in the corporate chart of accounts (IFRS) and thus are not consolidated at group level. They are used exclusively for local/country reporting purposes.

## Roles

---

<b>Data Owner</b>	<b>Data Steward</b>
The content of this macro can only be viewed by users who have logged in.	The content of this macro can only be viewed by users who have logged in.

## Data Sources, Type and Classification

---

<b>Data Source</b>	<b>Data Type</b>	<b>Data Classification</b>
SAP	Master Data	Internal Data

## Data Protection and Update Frequency

---

<b>Data Protection &amp; Access</b>	<b>Data Update Frequency</b>
No special access	On demand

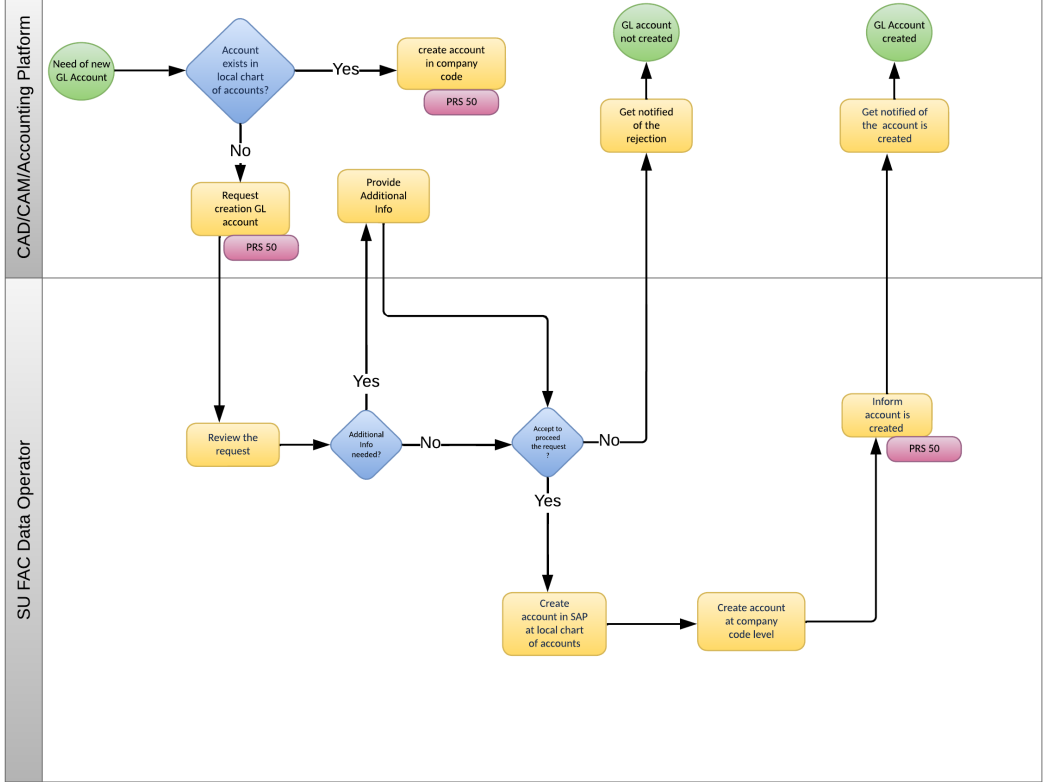
## Working Instruction

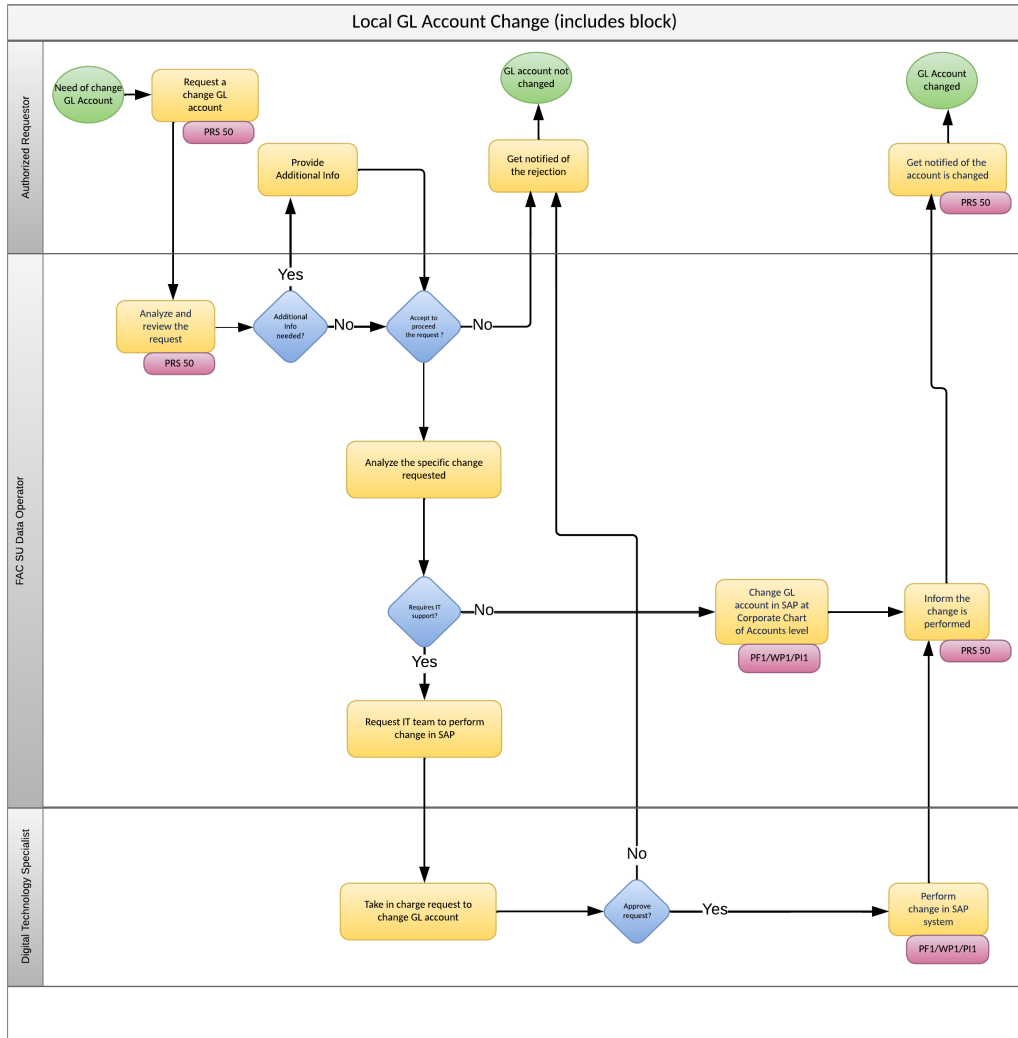
---

- [I analyze and create a General ledger account at company code level](#)

## Process Flows

GL Account Creation - Local Chart of Accounts (no link to IFRS)





## Related Business Terms

Business Term	Description	Link
Account Type	An account type specifies different area to which a General Ledger belongs.	<a href="#">More info</a>
General Ledger Account (Group Chart of Accounts)	A general ledger account at group chart of accounts is an account in SAP used to record transactions for IFRS purposes.	<a href="#">More info</a>
General Ledger Set of Accounts	A group of IFRS General Ledger accounts clustered into sets for reporting purposes, either Balance Sheet, Income Statement accounts and other type of association of accounts for specific reporting.	<a href="#">More info</a>