

General Ledger Account (Group Chart of Accounts)

Error rendering macro 'toc'

java.lang.RuntimeException: javax.xml.stream.XMLStreamException: Maximum attribute size limit (524288) exceeded

Business Term Status

The Business Term is currently **validated** by the Data Governance Committee.

Business Term Definition

A **general ledger account** at group chart of accounts is an account in SAP used to record transactions for **IFRS** purposes. Ending balances in these accounts are then aggregated to report in the financial statements. A few general ledger accounts are designated as reconciliation accounts. These accounts only contain summary balances that have been posted from sub-ledgers (for example accounts receivable and accounts payable).

A complete list of all IFRS general ledger accounts that a company uses is contained within the group chart of accounts, which is a simple listing of account numbers and account descriptions. The chart is usually organized to show all balance sheet accounts, followed by all income statement accounts.

Roles

Data Owner

The content of this macro can only be viewed by users who have logged in.

Data Steward

The content of this macro can only be viewed by users who have logged in.

Data Sources, Type and Classification

Data Source

SAP

Data Type

Master Data

Data Classification

Internal Data

Data Protection and Update Frequency

Data Protection & Access

No special access

Data Update Frequency

On demand

Data Quality Issues and Rules

Data Quality Issues

Unproper usage of GL accounts in specific standard processes

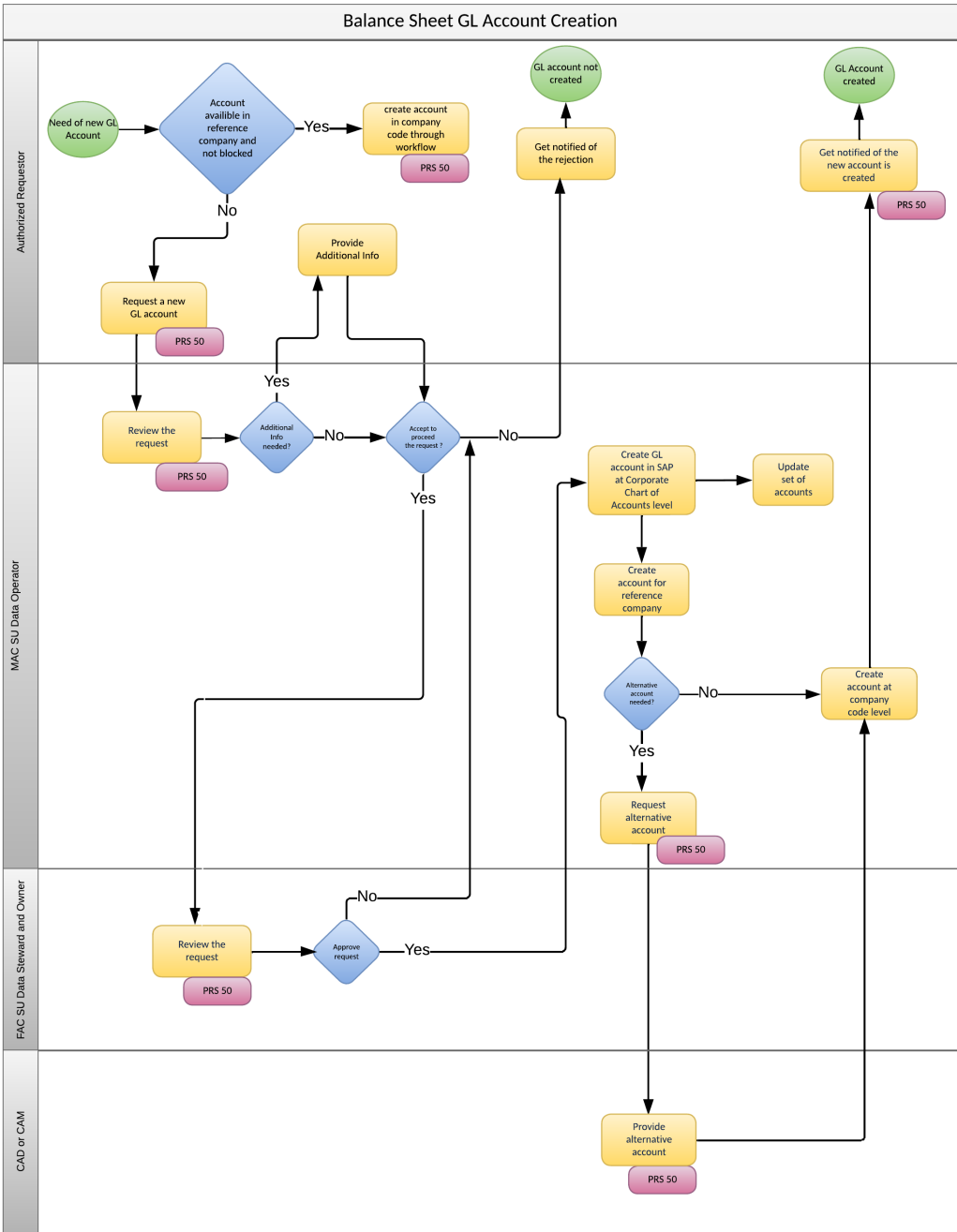
Data Quality Rules

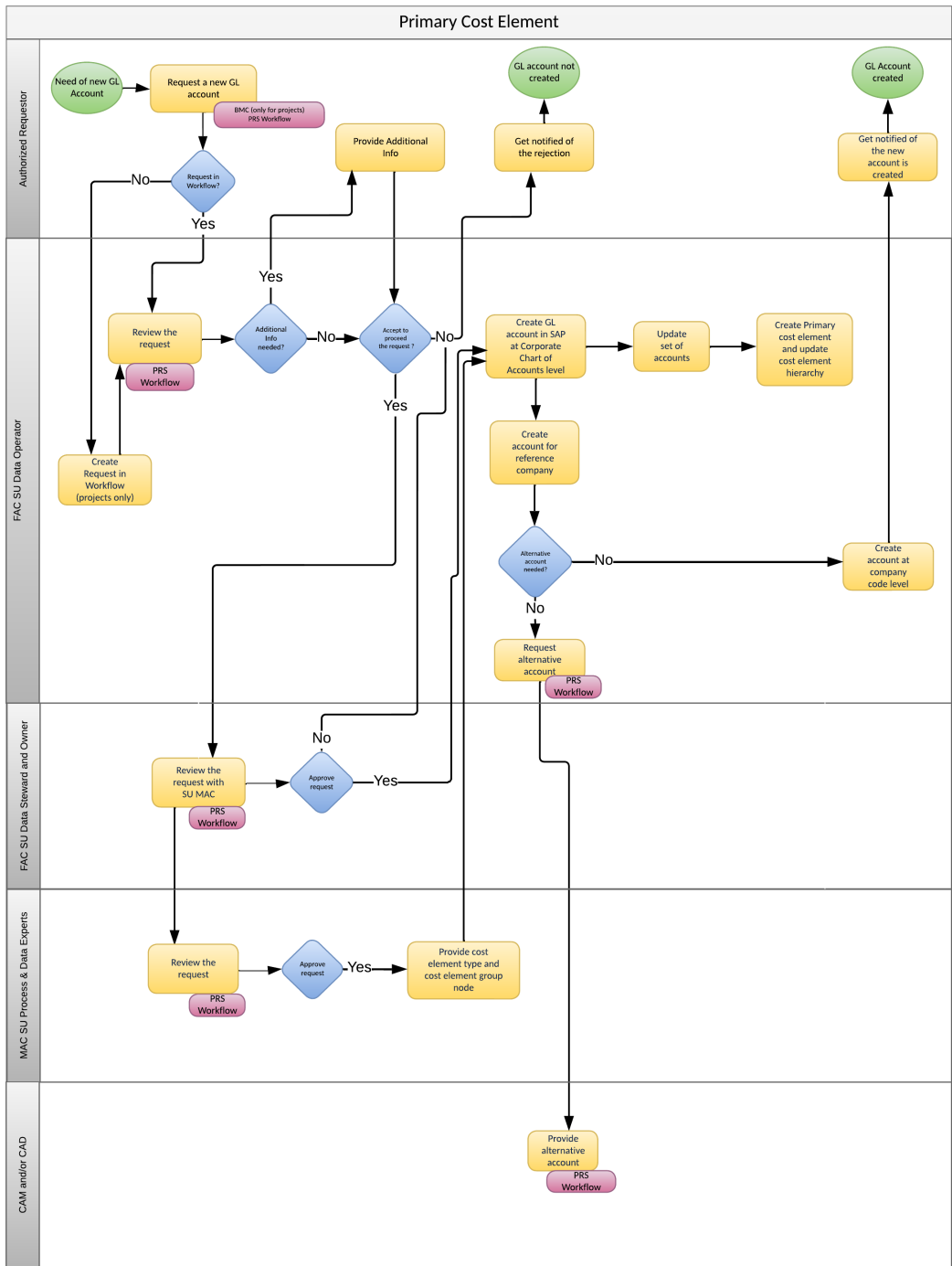
Complement the Financial reporting guide with the standard posting schemes linking it to the GL accounts implemented in the ERP

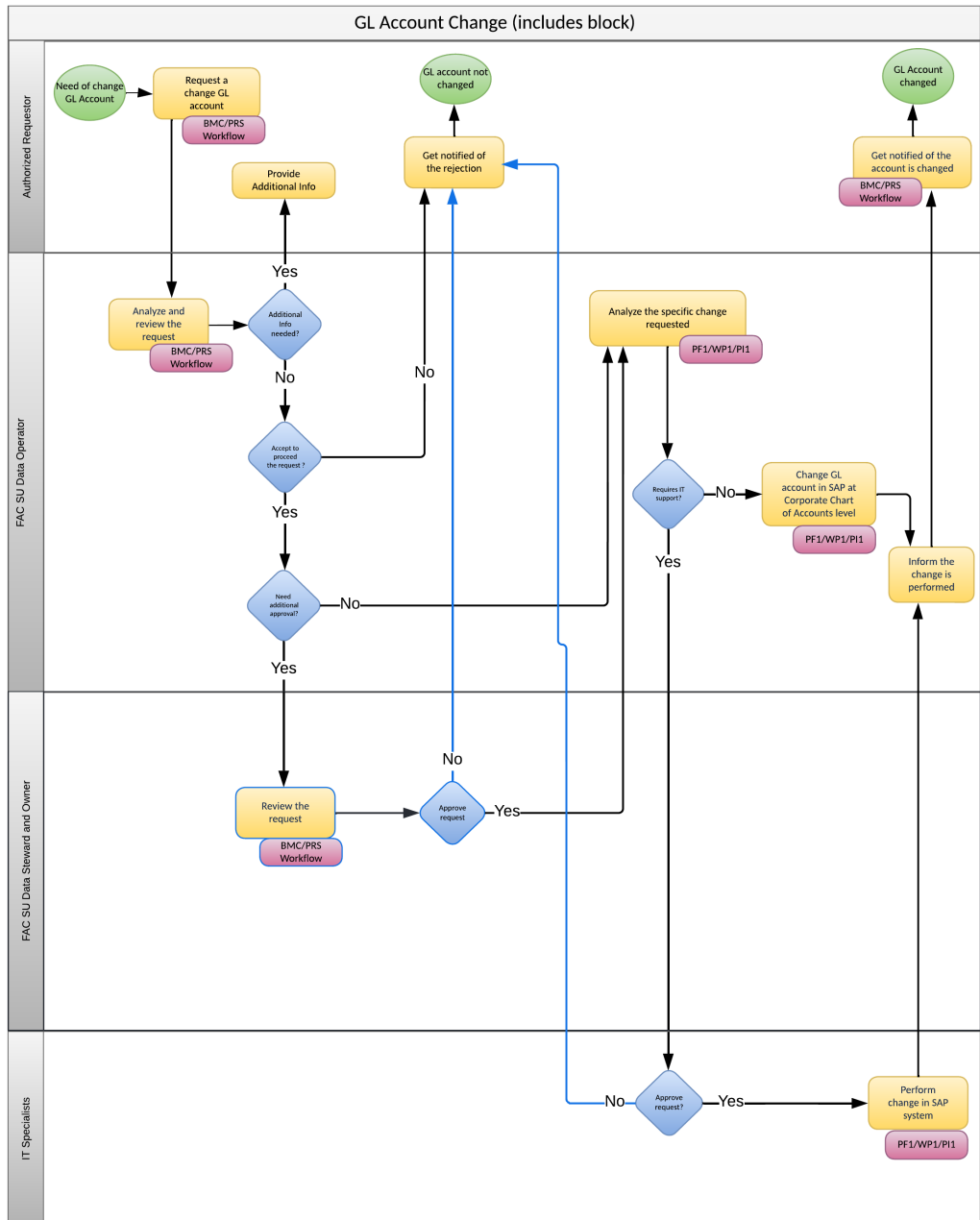
Working Instruction

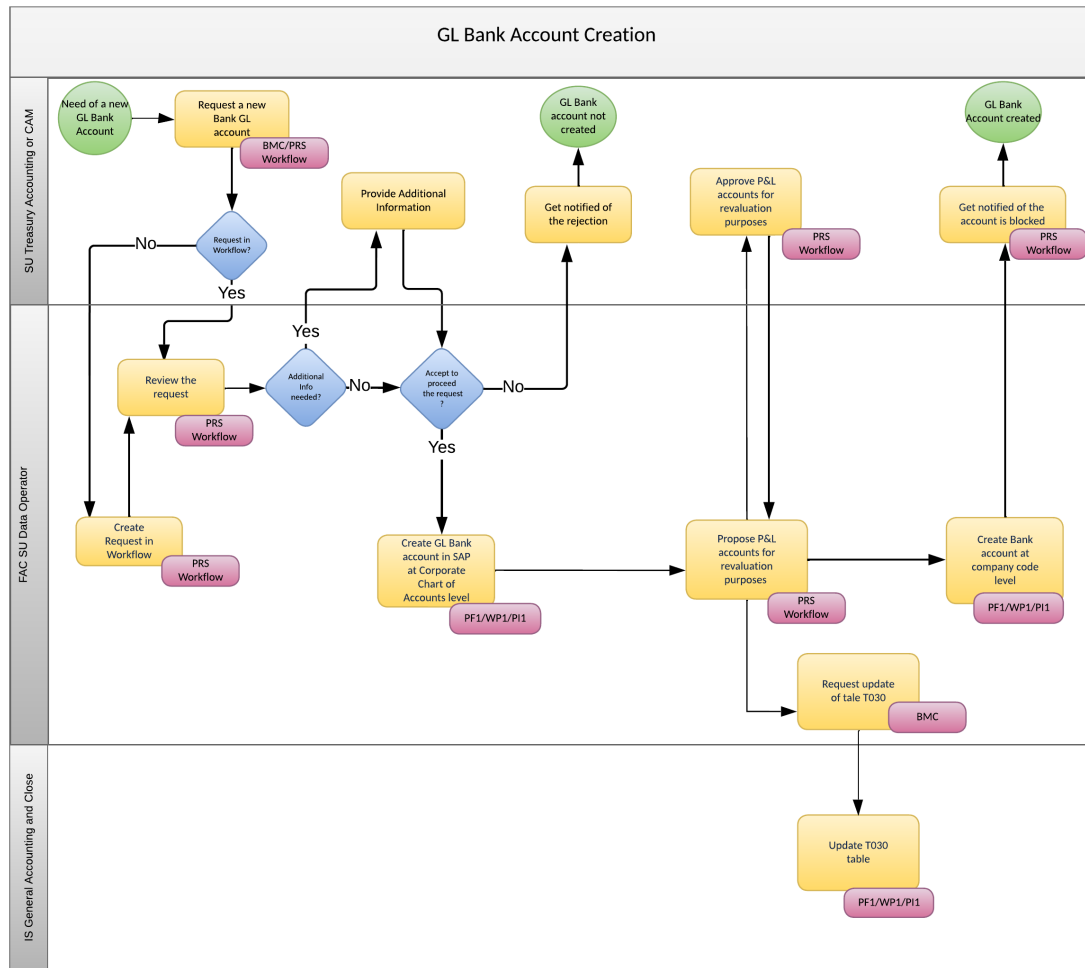
- I create a General ledger account at Chart of accounts level

Process Flows









Related Business Terms

Business Term	Description	Link
Account Type	An account type specifies different area to which a General Ledger belongs.	More info
General Ledger Account (Local Chart of Accounts)	The statutory general ledger accounts are used to record financial transactions and are aggregated into the local financial statements.	More info
General Ledger Set of Accounts	A group of IFRS General Ledger accounts clustered into sets for reporting purposes, either Balance Sheet, Income Statement accounts and other type of association of accounts for specific reporting.	More info