

JIRA (DEV only)

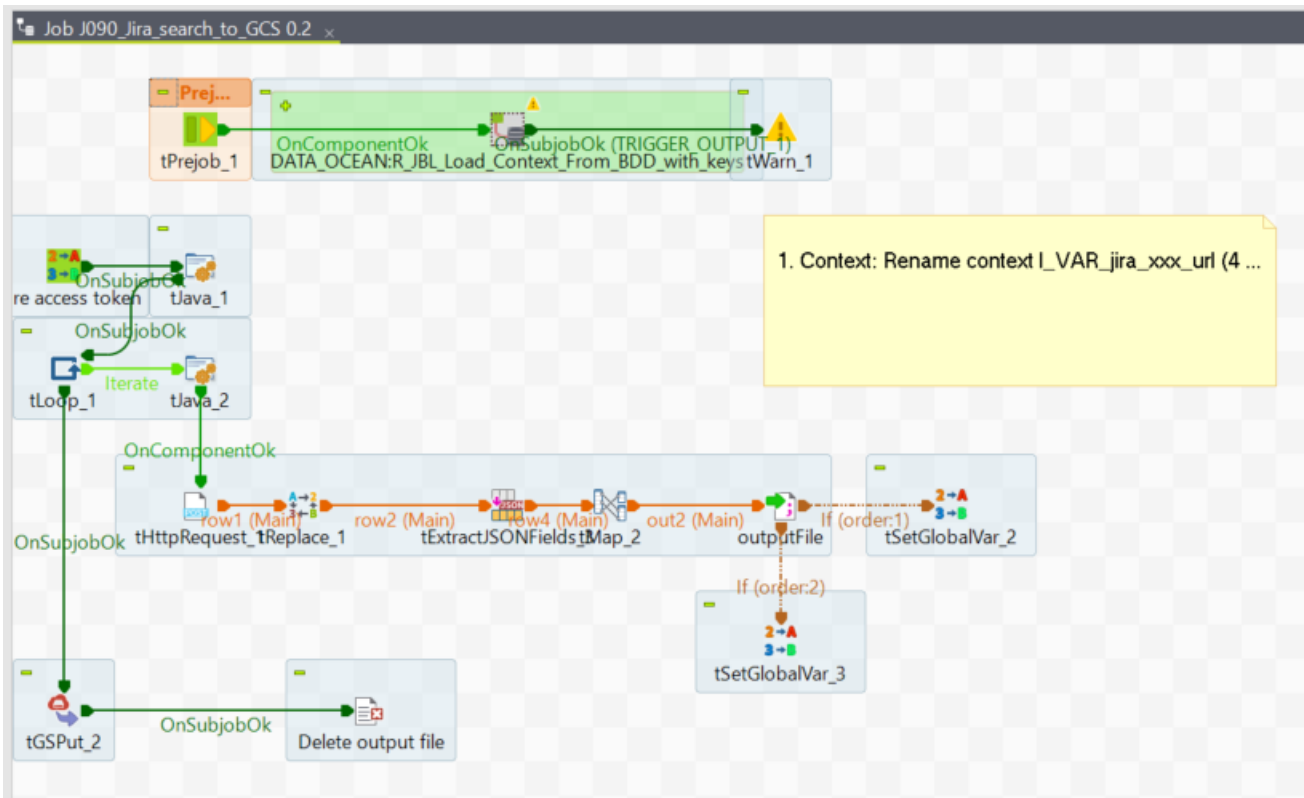
- Tools: Talend
 - Detail job
 - Flow job
 - Access rights
 - Source
 - Format
- Destination
 - Location
 - Format
 - Sizing
 - Assessment
- Loading
 - 1.1 Incremental Load
 - 1.2 Full load
 - 1.3. Reloading data
 - 1.4 Plan to schedule
 - 1.5 Timing
- Criticality
- Logging

Description

Tools: Talend

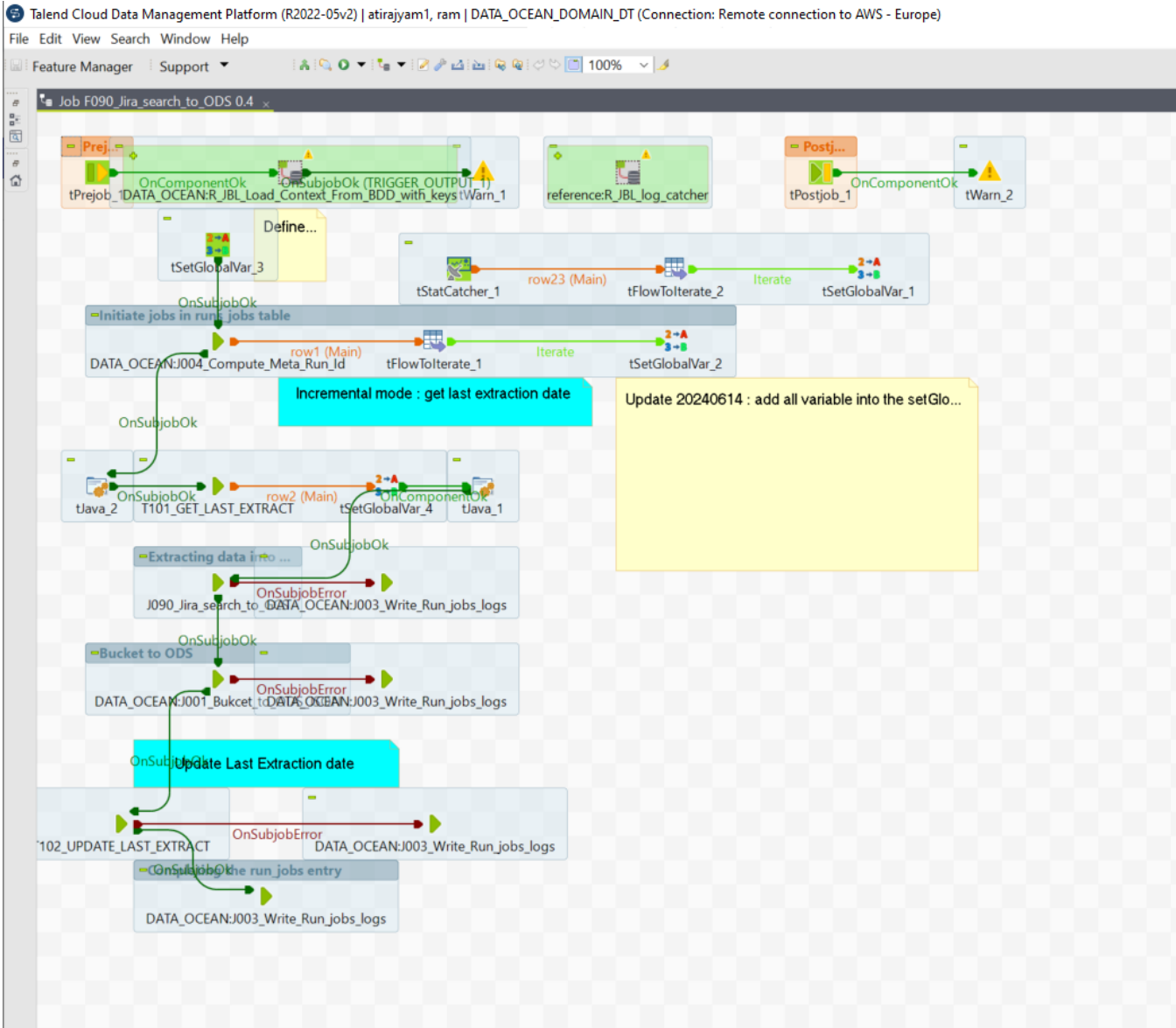
Detail job

- J090_Jira_search_to_GCS



Flow job

- F090_Jira_search_to_ODS



- Setup meta_run_id and filename of the output file
- Get the last load from table STG.incremetnal_load, control by the variable I_VAR_eBatch_PF1_QAPP_INC_LOAD and configuration the logic of the incremental load in tJava to use the date from incremental_load to the field of create or change date in the SAP
- Call the detail job and pass parameters such as user/password, query from point number 2 to do the incremental load and save the file to GCS
- Call the standard job to upload the files from GCS to ODS
- If the loading is OK and parameter I_VAR_heliux_[table_name]_reload = incremental, update the time on the table incremental_load. If the value is not incremental, it is the reloading
- If everything is OK, update the log.

Access rights

Source

- <https://solvayagile.atlassian.net/rest/api/2/search>

Format

- JSON

Destination

Location

The data will keep in

- *Bucket = cs-ew1-prj-data-dm-dt-[dev]-staging/xxx*
- *DataOcean GCP = prj-data-dm-dt-[env]*
- *STG Table name = prj-data-dm-dt-[env].STG.STG_JIR_0000_0000_F001_L_H_JiraSearch*
- *ODS Table name = prj-data-dm-dt-[Env].ODS.ODS_JIR_0000_F001_L_H_JiraSearch*
- *DPL View name = **To be updated***

To save the data into GCP Industrial Data Ocean, service account is required

Format

- *columnar format*

Sizing

Assessment

How to validate that the generated output is valid:

Loading

1.1 Incremental Load

1.2 Full load

1.3. Reloading data

1.4 Plan to schedule

1.5 Timing

The average time expected for loading:

Criticality

High/Medium/Low

Logging