

Functional Documentation - GBU fixed costs

1.0 Overview

GBU Fixed Costs Menu

Business Context and Application Overview

The GBU Fixed Costs application is part of Finance domain and we use mainly the SAP data from CO (Controlling) module to get data for the fixed costs and GBU level.

The application GBU Fixed Costs is used to follow Solvay's fixed costs mainly:

- STOT-R330 – Administrative & Commercial expenses
- R25460 – Non proportional costs of sales
- R27900 – Mis production.
- R25510 – Logistics costs.

Application User Profile

For this Application the access is provided based on the BW menu "FC - GBU Fixed Costs" and it's done via Service one.

Fill the form

<https://solvay-dwp.onbmc.com/dwp/app/#/itemprofile/622>

In SAP system select the "WBP - BW Business Warehouse"

In WBP - BW Business Warehouse : Select the Business Role select the "FC - GBU Fixed Costs"

Target Users:

GBU and Site Controllers and Plant Management

VERSION	DATE	MODIFIED BY	DESCRIPTION
0.01	29.09.2023	Inês Vilares	Initial draft

Application Type

Data Product Type

- Dashboard
- Report
- Advanced analytics
- AI
- Others <specify which one>

Technologies

- BW
- Tableau
- QlikSense
- Talend
- Dataiku
- Others <specify which one>

Data Sources

Note: list of all applications and various environment

- SAP PF1 (Production environment)
- SAP WP1
- SAP PI1
- BW (versions)
- iCare CRM
- CORE CRM
- Budget flat files
- Others <specify the name of the source>

2.0 Business Process

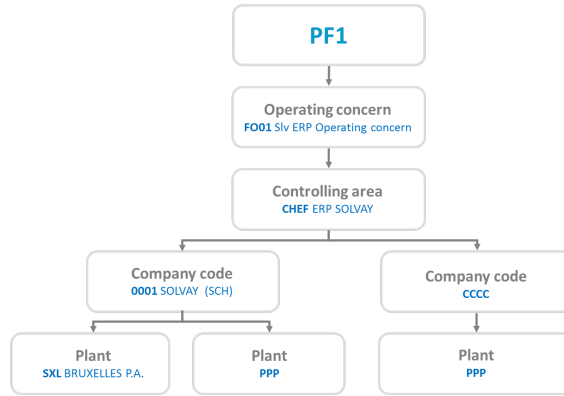
To understand the business process it's important to know the basic concept for the SAP CO module and how it's applicable in Solvay organization.

The SAP CO module in the SAP ERP (Enterprise Resource Planning) system focus on financial controlling and management accounting functions within an organization. SAP CO is designed to provide tools and capabilities to effectively manage and control costs, perform internal and external accounting, and support decision-making processes related to financial aspects of the business. SAP CO is tightly integrated with other SAP modules, such as SAP FI (Financial Accounting) and SAP MM (Materials Management), providing a cohesive and comprehensive solution for managing financial data, controlling costs, and supporting financial decision-making throughout the organization.

CO Structure in Solvay:

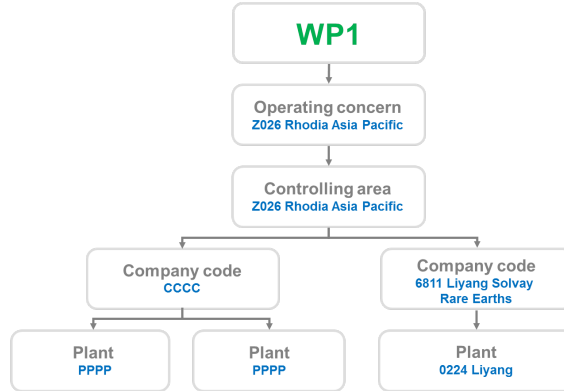
PF1 Structure

	Code	Description
Operating concern	FO01	Slv ERP Operating concern
Controlling area	CHEF	ERP SOLVAY



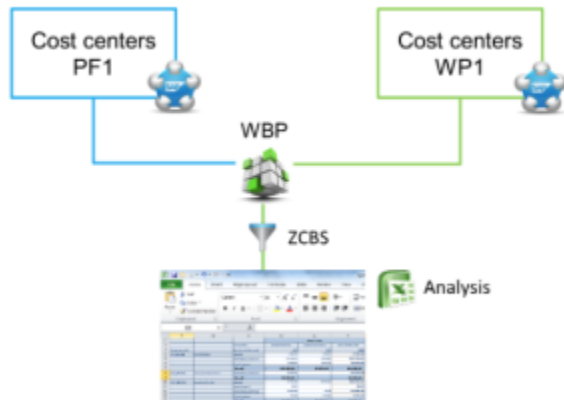
WP1 Structure

	Code	Description
Operating concern	Z001	Solvay Engin. Plasti.Polan
	Z006	Rhodia Europe
	Z013	Rhodia Europe
	Z025	Rhodia Latin America
	Z026	Rhodia Asia Pacific
	Z028	Solvay North America
Controlling area	= Operating concern	



Scope for GBU Fixed Costs

- PF1 & WP1 **cost centers** are included as long as there are included in the **hierarchy ZCBS**.



- For the **cost elements** in both systems they are included in the **new hierarchy ZSOLV** (old ZRCS-FC hierarchy). See more information about the change of the group in the Process Detail section for the hierarchy.

In the systems we can see the hierarchy using the SAP transaction **KSH3 - Display cost center hierarchy** to see the hierarchy respective to the cost center organization.

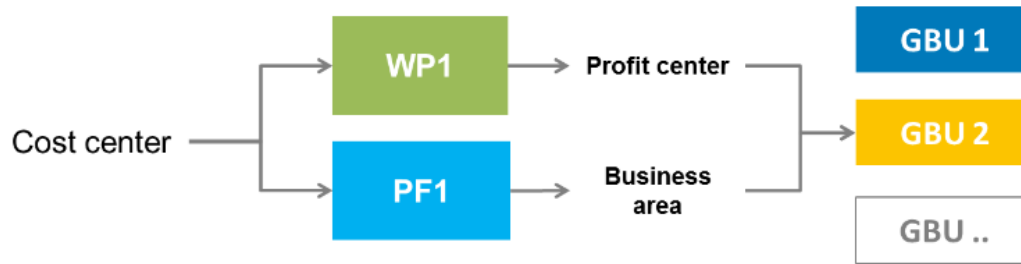
In the systems we can see the hierarchy using the SAP transaction **KAH3 - Display cost element group** to see the hierarchy respective to the cost element organization.

In the Process detail section we show in more detail the hierarchy and restrictions for this scope.

Determination of the GBU

The fixed costs report is available by GBU.

In WP1, the GBU comes from the Profit Center of the cost center while in PF1 it comes from the Business Area of the cost center

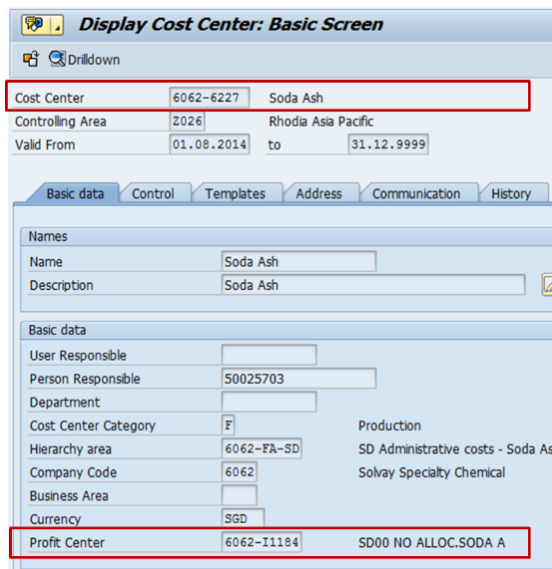


GBU determination in WP1

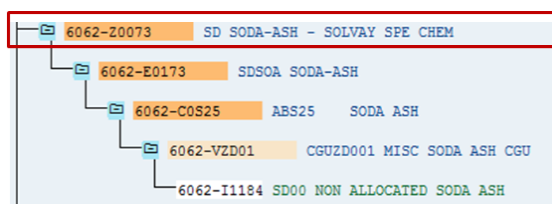
The determination of the GBU in WP1 is done with the Profit Center Standard hierarchy

Example

1. The profit center of the cost center 6062-6227 is 6062-11184



2. The profit center belongs to the GBU Soda Ash



3. In the fixed costs report, the cost center 6062-6227 is allocated to the GBU Soda Ash



GBU determination in PF1

The determination of the GBU for PF1 cost centers is done with the Business Area

Determination of the plant

The report is available by production site or headquarter. It comes from the Profit Center department

Origin & Destination

Report at origin - indirect production cost center

Report at origin only with primary cost element

Cost Center	Fixed cost Group 2	Actual - Origin (No Conversion)	CNY
2026/7971-2101	Production	LABOUR	272.360,65
		PURCHASES, SERVICES	100.300,00
		Travel expenses	6.535,00
		Result	379.195,65

Cost Element	Act. Costs
98300101 SC IT & ADMIN SER	100 300,00
98300601 TE CAR RISE	
98300602 TE TRAIN & PLANE	6 535,00
98300608 MEALS & ENTERT AI	
98300624 FC - RETROG BAKEN	
98320010 TEMP STAFF AGENCY	2 100,00
98320100 PERSONEL/SALARIES	141 068,55
98320122 FF-STAFF-FERKS	2 400,00
98320130 FS HOL & ABS	46 931,54
98320140 PERSONEL/BONUSES	1 440,00
98320141 FS BONDS PROV	11 755,72
98320146 EXEMPT BONUS ACCR	25 127,17
98320200 FS SOCIAL CHARGES	5 095,00
98320220 FS SOCIAL SECURIT	8 005,19
98320222 FS PENSION CONTRI	15 202,44
98320223 FS UNEMPL CONTR	1 091,44
98320226 FS WORK ACC CONTR	243,89
98320230 FS OTHER SOCIAL C	8 597,74
98320240 PERA/CONTR TO COU	2 901,57
* Debit	379 195,65
98422351 Technical #918CA	379 195,65-
* Credit	379 195,65-
** Over/Underabsorption	

Report at destination - indirect production cost center

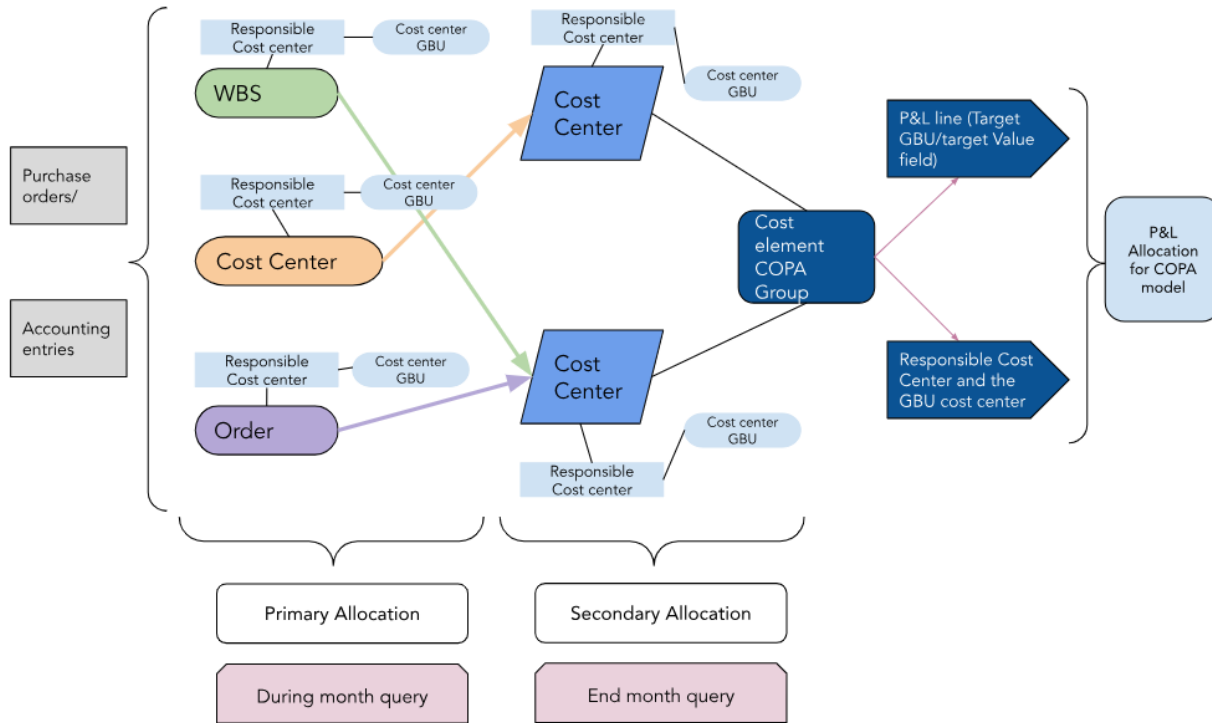
Report at destination with primary & secondary cost elements

Cost Center	Fixed cost Group 2	(-) Actual - Destination (No Conversion)	CNY
2026/7971-2101	Production	INDIRECT	-379.195,65
		LABOUR	272.360,65
		PURCHASES, SERVICES	100.300,00
		Travel expenses	6.535,00
		Result	0

Cost Element	Act. Costs
98300101 SC IT & ADMIN SER	100 300,00
98300601 TE CAR RISE	
98300602 TE TRAIN & PLANE	6 535,00
98300608 MEALS & ENTERT AI	
98300624 FC - RETROG BAKEN	
98320010 TEMP STAFF AGENCY	2 100,00
98320100 PERSONEL/SALARIES	141 068,55
98320122 FF-STAFF-FERKS	2 400,00
98320130 FS HOL & ABS	46 931,54
98320140 PERSONEL/BONUSES	1 440,00
98320141 FS BONDS PROV	11 755,72
98320146 EXEMPT BONUS ACCR	25 127,17
98320200 FS SOCIAL CHARGES	5 095,00
98320220 FS SOCIAL SECURIT	8 005,19
98320222 FS PENSION CONTRI	15 202,44
98320223 FS UNEMPL CONTR	1 091,44
98320226 FS WORK ACC CONTR	243,89
98320230 FS OTHER SOCIAL C	8 597,74
98320240 PERA/CONTR TO COU	2 901,57
* Debit	379 195,65
98422351 Technical assata	379 195,65-
* Credit	379 195,65-
** Over/Underabsorption	

For the GBU fixed costs we use the SAP information from the controlling part to analyze the fixed costs at GBU level. For this it's important to understand the structure behind and how the business see the costs and be able to analyze the information to perform their activities during and end of month.

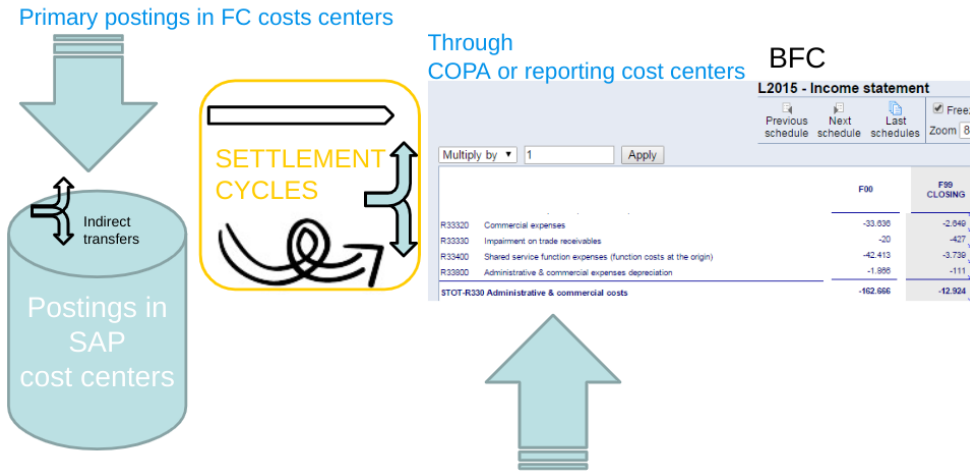
Model behind for PF1 and WP1:



Currently we have the WBS, cost centers and orders objects with values coming from the purchase orders and accounting entries. Each object is linked to a cost center which we call it "Responsible Cost Center" and this cost center is linked to a GBU.

We have the primary postings and during the closing process we have the settlements cycles (which will allocate the costs to a final cost center) and the final cost centers has the correspondent cost element for COPA line items to be present in the P&L report for PF1 and WP1 using the respective value field.

Reporting fixed costs challenges : reconciliation SAP/BFC:



In the controlling side we have primary posting in the CO objects for the fixed costs and during the closing we have the settlement cycles to transfer /allocate the costs to a final CO object and to be in the respective lines in P&L.

3.0 Application Feature Overview

For this application find below all the workbooks available:

Reports	Definition	Prompts	BW Workbook Query	Query Technical Name
FC - Cost center master data (Core Query)	This report is used to display the master data of all cost centers in WP1 & PF1 including the ZCBS hierarchy, the GBU and the plant code.	<p>Mandatory:</p> <p>N.A</p> <p>Optional:</p> <ul style="list-style-type: none"> • CCtr Category; • Change date; • CO area; • Company Code; • Cost center; • Created by; • Creation date; • Author. scope of Comp. Code; • Source System. 	BW_WBK_FC_0003	BW_QRY_C_COSTCTR_0001

<p>FC - End month - P&L reconciliation COPA (Core Query)</p>	<p>In this report the users can check the costs in the cost center and the respective cost element and the same amount allocated in P&L destination (COPA).</p> <p>The ZSOLV Group 4 as the default values - different from:</p> <ul style="list-style-type: none"> • ZSO-IND31 • ZSO-IND51 • ZSO-29999A <p>The field Function has default options - different from:</p> <ul style="list-style-type: none"> • ECP; • EACAR; • EPSRO; • ECPVSE; • EDICS; • ESERV. <p>The field Variable Cost has the default option to be excluded: X</p>	<p>Mandatory:</p> <ul style="list-style-type: none"> • Fiscal Year /Period; • BFC GBU - Resp Cost Center; • Exchange Rate type. <p>Optional:</p> <ul style="list-style-type: none"> • Auth Scope on Resp Cost Center; • BFC Geo /Zone; • Company Code; • Fixed Group 1; • Function; • Responsible Cost center; • User responsible; • Source System; • Target Curr. for conversion; • Version; • Variable Cost. 	<p>BW_WBK_FC_0001</p>	<p>BW_QRY_MP_R_FC003_0003</p>
---	---	--	-----------------------	-------------------------------

<p>FC - End month - P&L select - Monthly P&L Impact (Core Query)</p>	<p>This report shows the amounts allocated to the fixed costs in P&L but it's recommended to be used when the users wants to analyze the amounts allocated to different GBU's or Group of Activities. You can see more details in the section "Process Detail Workbook Details" .</p> <p>The field BFC Account has default options selected:</p> <ul style="list-style-type: none"> • R33210; • R33310; • R33320. <p>The ZSOLV Group 4 as the default values - different from:</p> <ul style="list-style-type: none"> • ZSO-IND31 • ZSO-IND51 • ZSO-29999A <p>The field Function has default options - different from:</p> <ul style="list-style-type: none"> • ECP; • EACAR; • EPSRO; • ECPVSE; • EDICS; • ESERV. <p>The field Variable Cost has the default option to be excluded: X</p>	<p>Mandatory:</p> <ul style="list-style-type: none"> • Calendar Year; • Conso View; • Exchange Rate type (default "C"). <p>Optional:</p> <ul style="list-style-type: none"> • Auth Scope on Resp Cost Center; • Currency Conversion Year; • P&L GBU; • P&L BFC Group of Activities 1; • P&L BFC Group of Activities 2; • P&L BFC Group of Activities 3; • P&L BFC Group of Activities 4; • P&L BFC Group of Activities 5; • BFC Account; • BFC Geo /Zone; • Company Code; • Responsible Plant; • Fixed Group 1; • Function; • Source System; • Target Currency; • Version Budget; • Variable Cost. 	<p>BW_WBK_FC_0007</p>	<p>BW_QRY_MPR_FC003_0009</p>
---	--	---	-----------------------	------------------------------

<p>FC - End month - P&L select - P&L Impact (Core Query)</p>	<p>This report shows the amounts allocated to the responsible cost center for fixed costs in P&L regarding the actual destination and the GBU's involved. You can see more details and examples in the section "Process Detail Workbook Details" .</p> <p>The field BFC Account has default options selected:</p> <ul style="list-style-type: none"> • R33210; • R33310; • R33320. <p>The ZSOLV Group 4 as the default values - different from:</p> <ul style="list-style-type: none"> • ZSO-IND31 • ZSO-IND51 • ZSO-29999A <p>The field Function has default options - different from:</p> <ul style="list-style-type: none"> • ECP; • EACAR; • EPSRO; • ECPVSE; • EDICS; • ESERV. <p>The field Variable Cost has the default option to be excluded: X</p>	<p>Mandatory:</p> <ul style="list-style-type: none"> • Conso View; • Exchange Rate type (default "C"). <p>Optional:</p> <ul style="list-style-type: none"> • Auth Scope on Resp Cost Center; • Fiscal Year; • P&L GBU; • P&L BFC Group of Activities 1; • P&L BFC Group of Activities 2; • P&L BFC Group of Activities 3; • P&L BFC Group of Activities 4; • P&L BFC Group of Activities 5; • BFC Account; • BFC Geo /Zone; • Company Code; • Responsible Plant; • Fixed Group 1; • Function; • User Responsible; • Source System; • Target Curr. for conversion; • Version Budget; • Variable Cost. 	<p>BW_WBK_FC_0006</p>	<p>BW_QRY_MP_R_FC003_0008</p>
---	---	---	-----------------------	-------------------------------

FC - CO Orders master data (Core Query)	This report shows the master data for CO orders with settlement details.	Mandatory: <ul style="list-style-type: none"> • Authorization Scope • GBU Optional: <ul style="list-style-type: none"> • Source System • Company Code • Controlling Area • Order • Order Type • Creation Date 	BW_FC_WBK_0008	BW_QRY_CP COCC01_0001
--	--	---	----------------	-----------------------

4.0 Functional Specification

4.1 General Data/Calculations

For these reports, it's important to understand some general concepts which are transversal to all the reports which allows the users to work with the reports in the same way as the SAP system and BFC tool.

GBU	Refer to the Global Business Unit and it's a concept used in our official reporting tool. To know how we get the GBU for PF1 and WP1 systems this is detail in the Process Definition section.
Cost Center	A cost center is a specific organizational unit within a company that is responsible for incurring costs. It represents a location, department, or function where expenses are generated. Cost centers are used for tracking and controlling costs, allocating expenses, and monitoring budget compliance.
Responsible Cost Center	A responsible cost center is a subcategory of a cost center that is responsible for specific cost incurrences within the main cost center. It allows for more detailed tracking and allocation of costs within a broader cost center. Responsible cost centers help organizations drill down into expenses for greater accuracy in cost analysis and control. Responsible Cost center is : <ul style="list-style-type: none"> - the cost center linked to the Order and WBS of the line item (CO-OM, PS) - the cost center of the line item for CO-CCA
Cost element	It's a categorization used to track and classify expenses incurred by an organization. It represents a specific type of cost, such as wages, materials, rent, or utilities, and serves as a fundamental building block for cost accounting and reporting. Cost elements are essential for allocating and analyzing costs within the SAP CO module. It's the P&L account used to post the amounts in SAP CO document.
Plant	Refers to a specific physical location or facility within a company's organizational structure.
Cost Center Hierarchy	Refers to a structured arrangement or organization of cost centers within a company. It establishes a hierarchical relationship among cost centers, typically based on their functions, responsibilities, or reporting structures. This hierarchy helps in organizing and managing cost centers efficiently for accounting, budgeting, and reporting purposes, allowing for better control and analysis of costs across the organization.

4.2 Process Detail

4.2.1. Report/Process Definition

Domain	Finance
Application	BW reports under FC - GBU Fixed Costs folder
Provider	MPR_FC003

In this section we will approach:

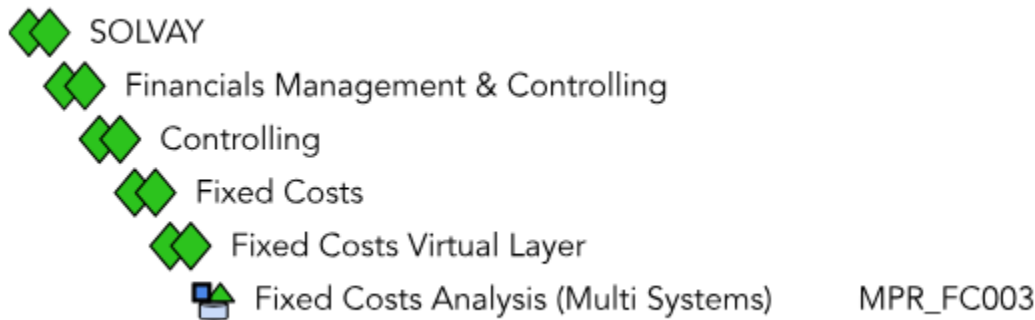
- [SAP BW High Level View](#)
- [Hierarchy](#)
- [Restrictions](#)
- [Special Case: mixed cost center](#)
- [Plant vs Responsible Plant](#)
- [Workbook Details](#)

The GBU Fixed Costs it's based in an existent model, since many years ago exist a controlling model to be more accurate for the GBU needs. We take the model already developed and it was enhanced to follow the fixed costs specially in the cost center at GBU level.

We have the PF1 and WP1 systems and we are using the main CO objects cost centers, WBS and orders and with this information extracted the data is splitted in two BW tools one side the GBU fixed costs and the other solution is CBS for the functions (This scope is explained in the "[Corporate Business Services application](#)"). For both applications we use the same data base and the same cubes but the multiproviders are different also because of the authorization part. The GBU Fixed Cost application are using COPA data's for reconciliation purpose

SAP BW High Level View

To see the data from the source systems see below how the information is organized in the BW perspective:



Hierarchy

All cost centers for this scope are stored in a unique **hierarchy ZCBS**.

- The **cost centers** for the GBU fixed costs are identified by an unique sub-folder in ZCBS hierarchy : **ENTRP** (some others filters are done and they are identified in the section below Restrictions). See more details for the structure for [cost centers hierarchy ZCBS](#) in the GBU cost center section.
- The **cost elements** for the fixed costs are identified by specific folder (ZSOLV) and sub folder. Refer to ZSOLV [Cost Element Group ZSOLV](#)



In the Cost Element Hierarchy from 01 Jan 2022 the Cost Element Group ZRCS-FC it was replaced by the [Cost Element Group ZSOLV](#). In the reports we have information for the ZSOLV group and the reports working for the filters and key figures with the new group (ZSOLV).

Restrictions

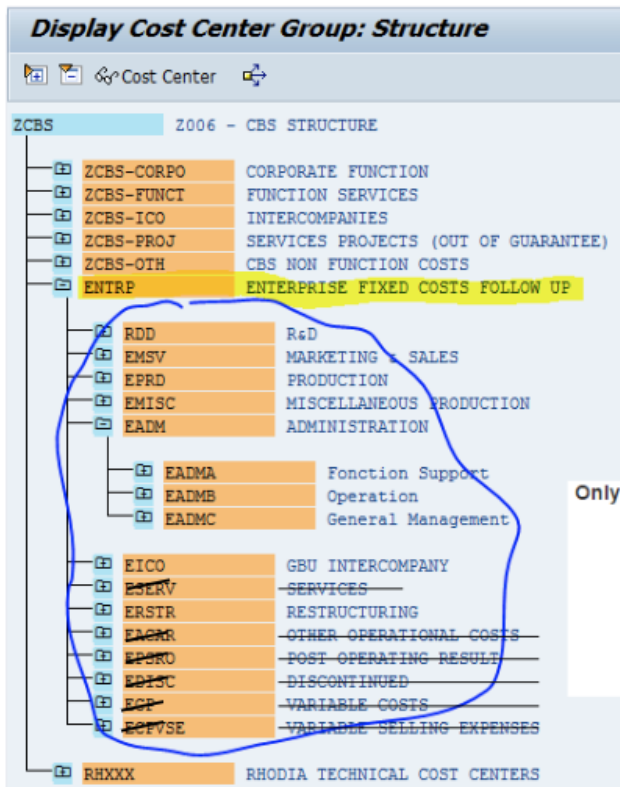
To determine GBU Fixed Costs perimeters, there is restrictions on:

- Cost center
- Cost element
- Miscellaneous filters

Restriction on cost center

As already mentioned for GBU Fixed Cost we only analyse ENTRP (1 Organisation attribute = ENTRP of the Responsible Cost center). By default we must excluded some "2 Function" attributes values in the reports. The users can delete these default filters.

Cost center hierarchy ZCBS : restrictions



In WP1 and PF1

Managed centrally by DMR (data management) **with GBU input**

Only Fixed Costs Cost Centers are included (Filtered via the 2 – Function group)

- ECP – Variable Costs are excluded.
- EACAR – Other Operating Expenses are excluded.
- EPSRO – Post Operating Result are excluded.
- ECPVSE – Variable Sales Expenses are excluded.
- EDISC – Discontinued are excluded.
- ESERV – Services are excluded.

Restriction on cost element:

In the cost element BW object the cost element hierarchy was denormalized (levels of the hierarchy are translated as attributes of cost element).

Controll.	Cost Element	V	Change	Source S.	Planning It.	Cost Element w/	ZOLV Group 1	ZOLV Group 2	ZOLV Group 3	ZOLV Group 4	Cost Element Gr.	Fixed cost Grou...	Fixed cost Grou...	Fixed cost Grou...	Fixed cost Grou...
2006	0098300813	A		WP1_400		0098300813	ZSOLV-OUT	ZSO-P09999	ZSO-P19999	ZSO-29999A	FUNCTO_0TH	ZRCS-AC	ZRCS-30	ZRCS-3040	ZRCS-3041
2006	0098300850	A		WP1_400		0098300850	ZSOLV-OUT	ZSO-P09999	ZSO-P19999	ZSO-29999A	FUNCTO_AA	ZRCS-9999	ZRCS-WB	ZRCS-WB5	ZRCS-WB5X
2006	0098300851	A		WP1_400		0098300851	ZSOLV-OUT	ZSO-P09999	ZSO-P19999	ZSO-29999A	FUNCTO_AA	ZRCS-9999	ZRCS-WB	ZRCS-WB5	ZRCS-WB5X
2006	0098300856	A		WP1_400		0098300856	ZSOLV-OUT	ZSO-P09999	ZSO-P19999	ZSO-29999A	FUNCTO_0TH	ZRCS-9999	ZRCS-WB	ZRCS-WB5	ZRCS-WB5X
2006	0099430020	A		WP1_400		0099430020	ZSOLV-IND	ZSO-IND1	ZSO-IND3	ZSO-IND31	FUNCTO_43	ZRCS-ABCNP	ZRCS-ABCN1	ZRCS-ABCN2	ZRCS-ABCN3
2025	0098300194	A		WP1_400		0098300194	ZSOLV-OUT	ZSO-P09999	ZSO-P19999	ZSO-29999A	FUNCTO_0TH	ZRCS-9999	ZRCS-UN	ZRCS-UNL	ZRCS-UNLX
2025	0098300195	A		WP1_400		0098300195	ZSOLV-OUT	ZSO-P09999	ZSO-P19999	ZSO-29999A	FUNCTO_0TH	ZRCS-9999	ZRCS-WB	ZRCS-WB5	ZRCS-WB5X
2025	0098300813	A		WP1_400		0098300813	ZSOLV-OUT	ZSO-P09999	ZSO-P19999	ZSO-29999A	FUNCTO_0TH	ZRCS-AC	ZRCS-30	ZRCS-3040	ZRCS-3041
2025	0098300850	A		WP1_400		0098300850	ZSOLV-OUT	ZSO-P09999	ZSO-P19999	ZSO-29999A	FUNCTO_AA	ZRCS-9999	ZRCS-WB	ZRCS-WB5	ZRCS-WB5X
2025	0098300851	A		WP1_400		0098300851	ZSOLV-OUT	ZSO-P09999	ZSO-P19999	ZSO-29999A	FUNCTO_AA	ZRCS-9999	ZRCS-WB	ZRCS-WB5	ZRCS-WB5X
2025	0098300856	A		WP1_400		0098300856	ZSOLV-OUT	ZSO-P09999	ZSO-P19999	ZSO-29999A	FUNCTO_0TH	ZRCS-9999	ZRCS-WB	ZRCS-WB5	ZRCS-WB5X
2025	0099429800	A		WP1_400		0099429800	ZSOLV-IND	ZSO-IND1	ZSO-IND3	ZSO-IND31	FUNCTO_42	ZRCS-ABCNP	ZRCS-ABCN1	ZRCS-ABCN2	ZRCS-ABCN3
2025	0099429801	A		WP1_400		0099429801	ZSOLV-IND	ZSO-IND1	ZSO-IND5	ZSO-IND51	FUNCTO_42	ZRCS-ABAMO	ZRCS-AB	ZRCS-ABAM	ZRCS-ABAMX

By default we must excluded some "ZSOLV Group 4 " attributes values in the reports. The users can delete these default filters.

Cost element hierarchy ZSOLV Group 4 : restrictions: The below Groups are excluded from the report by default

Display Cost element group: Structure

Cost Element

280-29989A	OUT OF SCOPE TECHNICAL
98300190	DTO ASSETS UNDER CONSTRUCTION ACTUAL COS
98300191	DTO ASSETS ALREADY CAPITALIZED
98300197	FC GRANT CAPITALISED ON WBS
98300192	DTO ASSETS REVERSE COSTS FOR CAPEX
98300194	CAPITALIZED INTANGIBLE ASSETS IFRS ONLY
98300195	FC = CAPITALIZED LEASING
98300199	SUB-CONTRACTING/CAPITALISED
98300813	Small rounding differences at invoice co
98300850	PRODUCTION ASSETS/INTANGIBLE
98300851	PRODUCTION ASSETS/TANGIBLE
98300856	FC PRODUCTION ASSETS/INTANGIBLE R&D

Display Cost element group: Structure

Cost Element

ZSO-IND51	Indirect Depreciation Absorption
99429801	Under-activity depreciation
99438000	Depreciation
99438001	Amortization
99438004	99438200
99438182	Amortizações CC 7525-1740

Display Cost element group: Structure

Cost Element

ZSO-IND31	INDIRECTS COSTS Fixed Costs Absorption
99429800	Under-activity fixed cost
99430020	Direct Labour
99430038	machine hours
99430039	Laboratory AU
99430054	External Labor Pack (CNP)
99430094	Sub contracting- TO
99430120	Dir Fxd Ohd/H (CNP)
99430121	>>> No valid master record
99430131	CSU cnp
99430200	Packs

Miscellaneous filters:

Order Type : we excluded (investment) :

- ZPM4
- ZPM6

Project Type we excluded (investment) :

- II
- FD

Value type

- 10- Real
- 20-plan

Currency type

- 10 company code currency

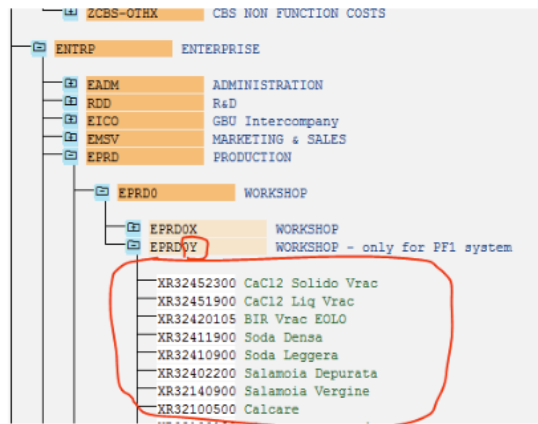
Special Case: mixed cost center

Because some cost centers are not 100% fixed (or variable), we identify them by an attribute **mixed cost center = X**

For this cost center we must check if the cost element is variable or not using XCS-ALL hierarchy (to exclude them)

We need a characteristic to identify these cost element (with an X as attribute)

How to identify "Mixed Cost center"?

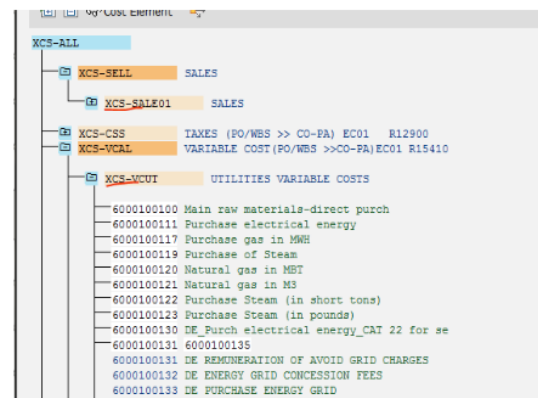


All cost center ENTRP with level 4 node finishing by Y in ZCBS Hierarchy

How to identify "variable cost" element?

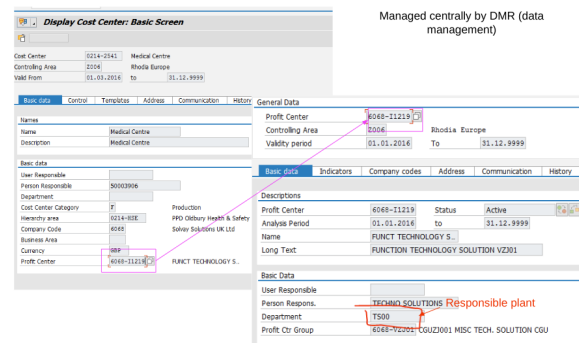
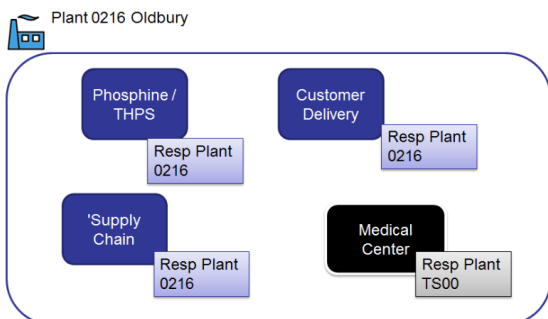
use **XCS-ALL** hierarchy

The variable cost elements are all cost element attached to a node starting with "XCS-V" ou "XCS-S" (or attached to sub node under XCS-VCAL et XCS- SELL).



Plant vs Responsible Plant

- Plant is the physical plant
- Responsible plant is financially responsible of the cost center
- Responsible plant is an authorization object
- In SAP (WP1/PF1) responsible plant is in the field department of the profit center of the cost center



The report is available by production site or headquarter. It comes from the Profit Center department.

Workbook Details

See below more details for each workbook available for analysis:

- Obsolete object = 0 when the cost center is active or 1 when it is closed and can not be used
- the 5 levels of the **ZCBS** hierarchy
 - Other information:
 - BFC GBU is coming from the **profit center** for cost centers created in WP1 and from the **business area** for cost centers in PF1
 - Person Resp. is the name of the **person responsible** assigned to the Position (in SRM7)
 - Plant is the **department** of the profit center

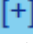
1	Cost Center	6526-6800	Customer Service
	Company code	6526	Solvey (Zhangjiagang) Spe
	Profit Center	8160-Z0449	ZFX Miscellaneous Z
	Business area	#	
	Position of resp	50014829	NOV RFX Planning man
	Obsolete object	0	
2	0 Hierarchy	ZCBS	CBS STRUCTURE
	1 Organisation	ENTRP	ENTERPRISE FIXED COS
	2 Function	EADM	ADMINISTRATION
	3 Sub-funct Grouping	EADMB	Operation
	4 Sub-function	EADMBA	Supply Chain
3	BFC GBU	CS	NOVECARE
	Person Resp.	First name - Last name	
	Plant	8160	6526 Zhangjiagang

FC - End month - P&L reconciliation COPA (Core Query)

Overview of the fixed costs workbook

When you open the workbook for the 1st time, you have the following columns displayed:

Header Data	Business Area	Cost Center	Expense Area	Cost Element	Cost Element Group	Cost Element Group 2	Cost Element Group 3	Cost Element Group 4	Cost Element Group 5
1	2	3	4	5	6	7	8	9	

- GBU
- Function determined with the **ZCBS hierarchy**
- Cost centers
- Plant
- Cost elements Group ZRCS-FC**
- Actual - Destination (Conv) = primary & secondary cost elements. (you can click  to see the detail). => conversion is done with the currency entered in the prompt
- P&L Destination (Conv). Costs in COPA after cost centers settlement in the corresponding value field. (based on **ZCBS hierarchy** correspondance)
- Actual Destination (Local) = same as (6) in local currency
- P&L Destination (Local) = same as (7) in local currency

FC - End month - P&L select - P&L Impact (Core Query) and FC - End month - P&L select - Monthly P&L Impact (Core Query)

The workbook that is recommended to use when working on fixed costs analysis is **FC-End month - P&L reconciliation COPA (Core Query)**. However when working with cost centers shared with other GBUs, the workbook "FC-End month - P&L select - P&L Impact" can be more relevant.

In this page, you will see based on an example the difference between the standard workbook **FC-End month - P&L reconciliation COPA (Core Query)** and the workbook "FC-End month - P&L select - P&L Impact" and in which cases it is recommended to use the workbook "FC-End month - P&L select - P&L Impact".

Then there is the procedure to access the workbook "FC-End month - P&L select - P&L Impact" with a description of the prompt and main measures available in the workbook.

What is the difference between the standard workbook "Reconciliation COPA" and the workbook "P&L Impact"

Let's take an example to explain the difference between both workbooks:

Example

The cost center 7418-6007 is used to record the administrative costs of the legal entity 7418.

In January 100 kUSD were posted on the cost center 7418-6007 with the detail below:

Labour	60 kUSD
T&E	10 kUSD
Other	30 kUSD

Standard case: One cost center = One GBU

The owner of cost center **7418-6007** is the GBU **CS** - Novocare as its profit center 7418-I0449 belongs to the GBU CS - Novocare (see: [Profit center](#))

Cost Center	7418-6007	Country Event
Controlling Area	2026	Solvay Asia Pacific
Valid From	01.02.2019	

Basic data	Control	Templates	Address
------------	---------	-----------	---------

Basic data	Profit Center		7418-I0449	CS00 Non Allocated N
------------	---------------	--	------------	----------------------

↓

GBU = CS

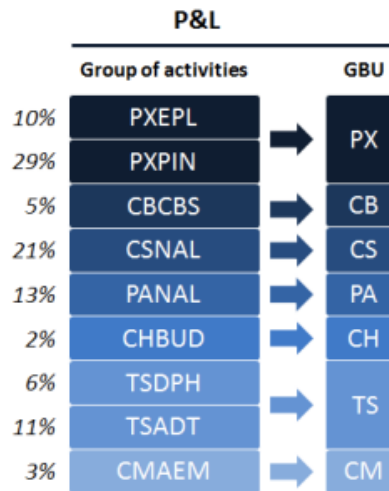
In the standard BW fixed costs report (FC-End month - P&L reconciliation COPA (Core Query)), all costs posted on the cost center 7418-6007 are reported in the GBU Novocare. It corresponds to what is expected if the cost center is fully allocated to the GBU Novocare.

BFC Global Business Unit			NOVECARE
Responsible Cost Center	Fixed cost Group 2		[+] Actual (Conv)
7418-6007	Country Event	LABOUR	60,00
		PURCHASES, SERVICES	30,00
		Travel expenses	10,00
Result			100 kUSD

When cost centers are fully allocated to a single GBU which is the most common case, it is recommended to use the workbook [FC-End month - P&L reconciliation COPA \(Core Query\)](#).

Special case: One cost center = More than one GBU

However in some cases a cost center can be shared with other GBUs. For instance the cost center 7418-6007 can be shared with other GBUs and allocated to the P&L to several GBUs as detailed in the diagram :



The GBU CS - Novocare doesn't want to report 100 % of costs posted in the cost center 7418-6007 but only 21 % of the costs allocated to the GBU with the same level of details (Labour / Purchases / T&E). In this case, the workbook [FC-End month - P&L select - P&L Impact](#) can be used.

BFC Global Business Unit			NOVECARE	OTHER GBUS
Responsible Cost Center	Fixed cost Group 2			
7418-6007	Country Event	LABOUR	12,60	47,40
		PURCHASES, SERVICES	6,30	23,70
		Travel expenses	2,10	7,90
Result			21 kUSD	79 kUSD

i When cost centers are shared with other GBUs, it is possible to use the workbook [BW_WBK_FC_0006 FC-End month - P&L select - P&L Impact \(Core Query\)](#) or [BW_WBK_FC_0007 FC-End month - P&L select - Monthly P&L Impact \(Core Query\)](#) to report the part of the cost center allocated to each GBU.

Access the workbook: FC-End month - P&L select - P&L Impact

Select the workbook you want to use:

- BW_WBK_FC_0006 FC-End month - P&L select - P&L Impact (Core Query)
- or BW_WBK_FC_0007 FC-End month - P&L select - **Monthly** P&L Impact (Core Query)

What is the difference between the 2 workbooks ?

The difference is the exchange rate used, the rest is the same.

When there is "Monthly" in the description of the workbook it means the exchange rate conversion is done as it is done in BFC. (see: [P&L - Exchange rates](#))

1. Enter the Fiscal Year/Period: *in the example 001.2019*
2. Enter the BFC GBU code: *in the example CS for Novocare*
3. It is possible to enter 5 group of activities (detailed in the section [Allocation by group of activities](#))
4. By default there is the list of BFC accounts used for SG&A

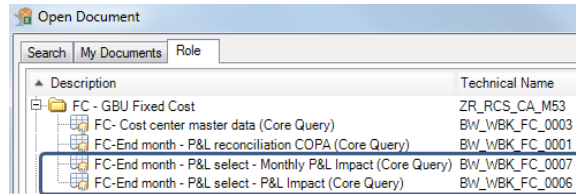
Can we remove the filter on BFC accounts without risk ?

The allocation of costs by GBU can only work when a cost center is directly allocated to the P&L. It can not work when the cost center is allocated to another cost center (ex: indirect production cost centers that are always allocated first to a direct production cost center).

The aim of the filter by default is to exclude cost centers not directly allocated to the P&L. It can be removed but with a risk of seeing dummy results.

The report is displayed with:

1. BFC Global Business Unit: GBU coming from the master data of the cost center
2. Actual - Destination: Total costs posted in the cost center
3. P&L Paid by CS: The part of the cost center allocated to the GBU selected in the prompt



Fiscal Year/Period (Selection Options, Optional) = 001.2019

P&L GBU = CS

P&L BFC group of activities 1

P&L BFC Group of activities 2

P&L BFC Group of activities 3

P&L BFC Group of activities 4

P&L BFC Group of activities 5

BFC Account (Selection option) = R33210

BFC Global Business Unit	Responsible Cost Center	Fixed cost Group 2	Actual - Destination	P&L Paid by CS	
NOVOCARE	7418-6007	Country Event	LABOUR	674 456 USD	141 636 USD
NOVOCARE	7418-6007	Country Event	PURCHASES, SERVICES	400 000 USD	300 000 USD
NOVOCARE	7418-6007	Country Event	Travel expenses	400 000 USD	300 000 USD

Allocation by group of activities

In some cases the allocation of cost center is done at the [group of activities](#) level. In this case it is possible to select the group of activities you want to detail in the prompt.

For instance 6% of the cost center 7418-6007 is allocated to the group of activities TSDPH and 11% to the group of activities TSADT.

1. Enter the P&L GBU: TS for Technology Solutions
2. Enter the group of activities 1: TSDPH
3. Enter the group of activities 2: TSADT

The report is displayed with:

1. P&L Paid by TS: The part of the cost center allocated to the GBU selected in the prompt (=TS)
2. P&L Paid by BU 1: The part of the cost center allocated the group of activities 1 (=TSDPH)
3. P&L Paid by BU 2: The part of the cost center allocated the group of activities 2 (=TSADT)

Fiscal Year/Period (Selection Options, Optional) = 001.2019

P&L GBU = TS

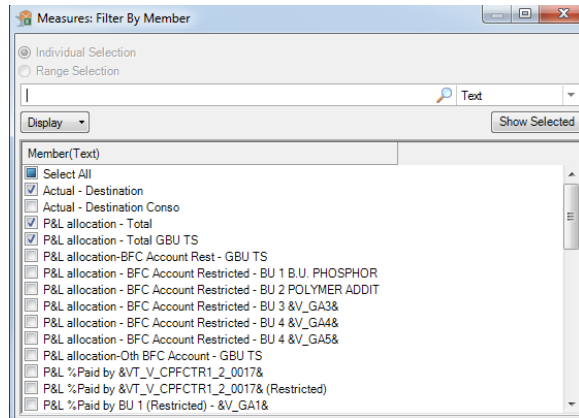
P&L BFC group of activities 1 = TSDPH

P&L BFC Group of activities 2 = TSADT

Responsible Cost Center	Fixed cost Group 2	Actual - Destination	P&L Paid by TS	P&L Paid by BU 1 (Restricted) - B.U. PHOSPHORUS SPECIALITE	P&L Paid by BU 2 (Restricted) - POLYMER ADDITIVES	
7418-5001	Country Management	LABOUR	2 827 807 JPY	480 726 JPY	169 668 JPY	311 058 JPY
7418-5001	Country Management	PURCHASES, SERVICES	473 832 JPY	80 551 JPY	28 430 JPY	52 121 JPY
7418-5001	Country Management	Travel expenses	706 850 JPY	120 000 JPY	40 000 JPY	70 000 JPY
7418-5001	Country Management	COPA				
7418-5001	Country Management	Sales	-2 232 651 JPY	-379 550 JPY	-133 959 JPY	-245 591 JPY

Other Measures

In the workbook, a long list of Measures are available. However most of them are useless for the reporting but they can be used to understand the detail of the calculation done by BW.



For instance, you can display the measure "P&L allocation - Total" to control the calculation done by BW.

In the example:

- The measure "P&L allocation - Total" (2) is the total of costs posted on the cost center reported on each row.
- The measure "P&L allocation - Total GBU TS" (3) is the part of the cost center that was allocated to the P&L. It comes from the P&L in COPA.
- The part allocated to the GBU (3) divided by the total of the cost center (2) gives a ratio (5) that is used to calculate the measure "P&L Paid by TS" (4)

Responsible Cost Center	Fixed cost Group 2	Actual - Destination	P&L allocation - Total	P&L allocation - Total GBU TS	P&L Paid by TS	
7418-5001	Country Management	LABOUR	2 827 807 JPY	1 775 838,00 JPY	301 892,00 JPY	480 726 JPY
7418-5001	Country Management	PURCHASES, SERVICES	473 832 JPY	1 775 838,00 JPY	301 892,00 JPY	80 551 JPY
7418-5001	Country Management	Travel expenses	706 850 JPY	1 775 838,00 JPY	301 892,00 JPY	120 164 JPY
7418-5001	Country Management	COPA	1 775 838,00 JPY	1 775 838,00 JPY	301 892,00 JPY	301 892,00 JPY
7418-5001	Country Management	Sales	-2 200 000 JPY	1 775 838,00 JPY	301 892,00 JPY	-3 000 000 JPY

$$\textcircled{5} = \textcircled{3} / \textcircled{2} = 17 \%$$

Obviously it is not necessary to display the measure (3) & (4) in the final reporting but can be used to understand how the allocation to a GBU is done.

FC - CO Orders master data (Core Query)

i The query **BW_QRY_CPCOCC01_0001 FC - CO Orders master data (Core Query)** is used to display the master data of all CO orders in WP1 & PF1.

The query combines the orders master data with the Settlement details, to maintain the clean-up of the Finance Master data (CO Orders).

In order to maintain the regular clean-up of the CO Orders by Authorization Scope, we have created this query to ease the quarterly clean-up procedure.

Restrictions for the query output (Applied in the backend):

CO AREA:

PF1 = CHEF

WP1 = Z006 , Z013 , Z025, Z026 and Z028

ORDER TYPE:

PF1 = Y* (Y000 to YZZZ)

WP1 = ZORD , Y991 , Y998 and Y999

STATUS:

Orders with Status "CLSD" (Closed) , "LKD"(Locked) or "DLT" (Marked for Deletion) will be excluded in the report output.

For more detailed information, you can check the functional specification [documentation](#).

5.0 Non-functional Descriptions

5.1 Usability

as per standard.

5.2 Regulatory Compliance

as per standard.

5.3 Security

as per standard.

5.4 Performance

as per standard.

5.5 Reliability

as per standard.

5.6 Scalability

as per standard.

5.7 Compatibility

as per standard.

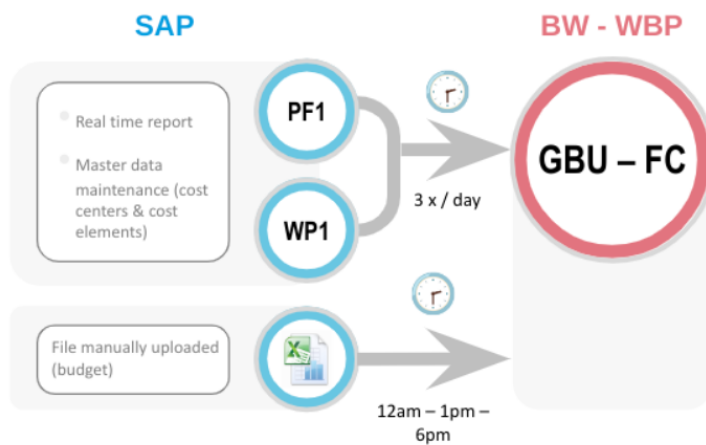
5.8 Availability

as per standard.

5.9 Refresh of the Data

The loads for the GBU Fixed Costs application is the following:

Closing Time:



Outside of Closing: it's one time on a daily basis.