

# Talend Documentation

## Job Details

As part of HR DQ project, we have developed the below Talend jobs which gets the data from SuccessFactor tables and ingest data into the respective STG/ODS tables. We are following the DataOcean standard jobs.

**Note:** Please see to find the list of jobs which are getting used in the prod for DQ project.

Talend Job name	SuccessFactor Table name	Talend project	GCP Project	STG Table	ODS table
F010_SAP_SF_EmpJob_SAP_SF_to_ODS	EmpJob	DATA_OCEAN_DOMAIN_HR	prj-data-dm-hr-prod	STG_SFC_0000_0000_F001_F_D_EmpJob	ODS_SFC_0000_F001_F_D_EmpJob
F009_SAP_SF_EmpEmployment_SAP_SF_to_ODS	EmpEmployment	DATA_OCEAN_DOMAIN_HR	prj-data-dm-hr-prod	STG_SFC_0000_0000_F001_F_D_EmpEmployment	ODS_SFC_0000_F001_F_D_EmpEmployment
F005_SAP_SF_EmpEmploymentTermination_SAP_SF_to_ODS	EmpEmploymentTermination	DATA_OCEAN_DOMAIN_HR	prj-data-dm-hr-prod	STG_SFC_0000_0000_F001_F_D_EmpEmploymentTermination	ODS_SFC_0000_F001_F_D_EmpEmploymentTermination
F006_SAP_SF_EmpPayCompRecurring_SAP_SF_to_ODS	EmpPayCompRecurring	DATA_OCEAN_DOMAIN_HR	prj-data-dm-hr-prod	STG_SFC_0000_0000_F001_F_D_EmpPayCompRecurring	ODS_SFC_0000_F001_F_D_EmpPayCompRecurring
F007_SAP_SF_EmpCompensation_SAP_SF_to_ODS	EmpCompensation	DATA_OCEAN_DOMAIN_HR	prj-data-dm-hr-prod	STG_SFC_0000_0000_F001_F_W_EmpCompensation	ODS_SFC_0000_F001_F_W_EmpCompensation
F008_SAP_SF_FOPayComponent_SAP_SF_to_ODS	FOPayComponent	DATA_OCEAN_DOMAIN_HR	prj-data-dm-hr-prod	STG_SFC_0000_0000_F001_F_D_FOPayComponent	ODS_SFC_0000_F001_F_D_FOPayComponent
F004_SAP_SF_EmpJobRelationships_SAP_SF_to_ODS	EmpJobRelationships	DATA_OCEAN_DOMAIN_HR	prj-data-dm-hr-prod	STG_SFC_0000_0000_F001_F_D_EmpJobRelationships	ODS_SFC_0000_F001_F_D_EmpJobRelationships
F001_SAP_SF_PerEmail_SAP_SF_to_ODS	PerEmail	DATA_OCEAN_DOMAIN_HR	prj-data-dm-hr-prod	STG_SFC_0000_0000_F001_F_D_PerEmail	ODS_SFC_0000_F001_F_D_PerEmail
F002_SAP_SF_PerPersonal_SAP_SF_to_ODS	PerPerson	DATA_OCEAN_DOMAIN_HR	prj-data-dm-hr-prod	STG_SFC_0000_0000_F001_F_D_PerPerson	ODS_SFC_0000_F001_F_D_PerPerson
F003_SAP_SF_PerPersonal_SAP_SF_to_ODS	PerPersonal	DATA_OCEAN_DOMAIN_HR	prj-data-dm-hr-prod	STG_SFC_0000_0000_F001_F_D_PerPersonal	ODS_SFC_0000_F001_F_D_PerPersonal
F011_SAP_SF_FOEventReason_csv_to_GCS	FOEventReason	DATA_OCEAN_DOMAIN_HR	prj-data-dm-hr-prod	STG_SFC_0000_0000_F001_F_W_FOEventReason	ODS_SFC_0000_F001_F_W_FOEventReason
F012_SAP_SF_UserAccount_csv_to_GCS	UserAccount	DATA_OCEAN_DOMAIN_HR	prj-data-dm-hr-prod	STG_SFC_0000_0000_F001_F_W_UserAccount	ODS_SFC_0000_F001_F_W_UserAccount
F014_SAP_FOLocationGroup_SAP_SF_to_ODS	FOLocationGroup	DATA_OCEAN_DOMAIN_HR	prj-data-dm-hr-prod	STG_SFC_0000_0000_F001_F_W_FOLocationGroup	ODS_SFC_0000_F001_F_W_FOLocationGroup
F015_SAP_FOCompany_SAP_SF_to_ODS	FOCompany	DATA_OCEAN_DOMAIN_HR	prj-data-dm-hr-prod	STG_SFC_0000_0000_F001_F_W_FOCompany	ODS_SFC_0000_F001_F_W_FOCompany
F016_SAP_FOCostCenter_SAP_SF_to_ODS	FOCostCenter	DATA_OCEAN_DOMAIN_HR	prj-data-dm-hr-prod	STG_SFC_0000_0000_F001_F_W_FOCostCenter	ODS_SFC_0000_F001_F_W_FOCostCenter
F017_SAP_FOBusinessUnit_SAP_SF_to_ODS	FOBusinessUnit	DATA_OCEAN_DOMAIN_HR	prj-data-dm-hr-prod	STG_SFC_0000_0000_F001_F_W_FOBusinessUnit	ODS_SFC_0000_F001_F_W_FOBusinessUnit
F018_SAP_PickListValueV2_SAP_SF_to_ODS	PickListValueV2	DATA_OCEAN_DOMAIN_HR	prj-data-dm-hr-prod	STG_SFC_0000_0000_F001_F_W_PickListValueV2	ODS_SFC_0000_F001_F_W_PickListValueV2
F019_SAP_Position_SAP_SF_to_ODS	Position	DATA_OCEAN_DOMAIN_HR	prj-data-dm-hr-prod	STG_SFC_0000_0000_F001_F_W_Position	ODS_SFC_0000_F001_F_W_Position

F020_SAP_EmpWorkPermit_SAP_SF_to_ODS	EmpWorkPermit	DATA_OCEAN_DOMAIN_HR	prj-data-dm-hr-prod	STG_SFC_0000_0000_F001_F_W_EmpWorkPermit	ODS_SFC_0000_F001_F_W_EmpWorkPermit
F021_SAP_FOLocation_SAP_SF_to_ODS	FOLocation	DATA_OCEAN_DOMAIN_HR	prj-data-dm-hr-prod	STG_SFC_0000_0000_F001_F_W_FOLocation	ODS_SFC_0000_F001_F_W_FOLocation
F012_SAP_User_SAP_SF_to_ODS	User	DATA_OCEAN_DOMAIN_HR	prj-data-dm-hr-prod	STG_SFC_0000_0000_F001_F_W_User	ODS_SFC_0000_F001_F_W_User
F022_SAP_empCompensationGroupSumCalculatedNav_SAP_SF_to_ODS	empCompensationGroupSumCalculatedNav	DATA_OCEAN_DOMAIN_HR	prj-data-dm-hr-prod	STG_SFC_0000_0000_F001_F_W_empCompensationGroupSumCalculatedNav	ODS_SFC_0000_F001_F_W_empCompensationGroupSumCalculatedNav

As part of **Procurement** DQ project, we have developed the below Talend jobs which gets the data from SAP (WP1 and PF1) tables and ingest data into the respective STG/ODS tables. We are following the DataOcean standard jobs.

Talend Job name	Source Table name	Talend project	GCP Project	STG Table	ODS table
F001_SPW_F001_F_W_A017_TO_BQ	A017	DATA_OCEAN_DOMAIN_PROCUREMENT	prj-data-dm-procurement-prod	STG_SPW_0000_0000_F001_F_W_A017	ODS_SPW_0000_F001_F_W_A017
F001_SPW_F001_F_W_A018_TO_BQ	A018	DATA_OCEAN_DOMAIN_PROCUREMENT	prj-data-dm-procurement-prod	STG_SPW_0000_0000_F001_F_W_A018	ODS_SPW_0000_F001_F_W_A018
F001_SPW_F001_F_W_WYT3_TO_BQ	WYT3	DATA_OCEAN_DOMAIN_PROCUREMENT	prj-data-dm-procurement-prod	STG_SPW_0000_0000_F001_F_W_WYT3	ODS_SPW_0000_F001_F_W_WYT3
F001_SPW_F001_F_W_NACH_H_TO_BQ	NACH	DATA_OCEAN_DOMAIN_PROCUREMENT	prj-data-dm-procurement-prod	STG_SPW_0000_0000_F001_F_W_NACH	ODS_SPW_0000_F001_F_W_NACH
F001_SPW_F001_F_W_LFB1_TO_BQ	LFB1	DATA_OCEAN_DOMAIN_PROCUREMENT	prj-data-dm-procurement-prod	STG_SPW_0000_0000_F001_F_W_LFB1	ODS_SPW_0000_F001_F_W_LFB1
F001_SPW_F001_F_W_LFM1_TO_BQ	LFM1	DATA_OCEAN_DOMAIN_PROCUREMENT	prj-data-dm-procurement-prod	STG_SPW_0000_0000_F001_F_W_LFM1	ODS_SPW_0000_F001_F_W_LFM1
F001_SPW_F001_F_W_LFZA_TO_BQ	LFZA	DATA_OCEAN_DOMAIN_PROCUREMENT	prj-data-dm-procurement-prod	STG_SPW_0000_0000_F001_F_W_LFZA	ODS_SPW_0000_F001_F_W_LFZA
F001_SPW_F001_F_W_T001_TO_BQ	T001	DATA_OCEAN_DOMAIN_PROCUREMENT	prj-data-dm-procurement-prod	STG_SPW_0000_0000_F001_F_W_T001	ODS_SPW_0000_F001_F_W_T001
F001_SPW_F001_F_W_T024E_TO_BQ	T024E	DATA_OCEAN_DOMAIN_PROCUREMENT	prj-data-dm-procurement-prod	STG_SPW_0000_0000_F001_F_W_T024E	ODS_SPW_0000_F001_F_W_T024E
F001_SPW_F001_F_W_T042L_TO_BQ	T042L	DATA_OCEAN_DOMAIN_PROCUREMENT	prj-data-dm-procurement-prod	STG_SPW_0000_0000_F001_F_W_T042L	ODS_SPW_0000_F001_F_W_T042L
F001_SPW_F001_F_W_BSIK_TO_BQ	BSIK	DATA_OCEAN_DOMAIN_PROCUREMENT	prj-data-dm-procurement-prod	STG_SPW_0000_0000_F001_F_W_BSIK	ODS_SPW_0000_F001_F_W_BSIK
F001_SPW_F001_I_W_EKPA_TO_BQ	EKPA	DATA_OCEAN_DOMAIN_PROCUREMENT	prj-data-dm-procurement-prod	STG_SPW_0000_0000_F001_I_W_EKPA	ODS_SPW_0000_F001_I_W_EKPA
F001_SPW_F001_I_W_VTTK_TO_BQ	VTTK	DATA_OCEAN_DOMAIN_PROCUREMENT	prj-data-dm-procurement-prod	STG_SPW_0000_0000_F001_I_W_VTTK	ODS_SPW_0000_F001_I_W_VTTK
F001_SPW_F001_F_W_A018_TO_BQ	A018	DATA_OCEAN_DOMAIN_PROCUREMENT	prj-data-dm-procurement-prod	STG_SPW_0000_0000_F001_F_W_A018	ODS_SPW_0000_F001_F_W_A018
F001_SPF_F001_F_W_EKPA_TO_BQ	EKPA	DATA_OCEAN_DOMAIN_PROCUREMENT	prj-data-dm-procurement-prod	STG_SPF_0000_0000_F001_F_W_EKPA	ODS_SPF_0000_F001_F_W_EKPA
F001_SPF_F001_F_W_WYT3_TO_BQ	WYT3	DATA_OCEAN_DOMAIN_PROCUREMENT	prj-data-dm-procurement-prod	STG_SPF_0000_0000_F001_F_W_WYT3	ODS_SPF_0000_F001_F_W_WYT3
F001_SPF_F001_F_W_T024E_TO_BQ	T024E	DATA_OCEAN_DOMAIN_PROCUREMENT	prj-data-dm-procurement-prod	STG_SPF_0000_0000_F001_F_W_T024E	ODS_SPF_0000_F001_F_W_T024E
F001_SPF_F001_F_W_LFBK_TO_BQ	LFBK	DATA_OCEAN_DOMAIN_PROCUREMENT	prj-data-dm-procurement-prod	STG_SPF_0000_0000_F001_F_W_LFBK	ODS_SPF_0000_F001_F_W_LFBK
F001_SPF_F001_F_W_ZZRSEGT_T_TO_BQ	ZZRSEGT_T	DATA_OCEAN_DOMAIN_PROCUREMENT	prj-data-dm-procurement-prod	STG_SPF_0000_0000_F001_F_W_ZZRSEGT_T	ODS_SPF_0000_F001_F_W_ZZRSEGT_T
F001_SPF_F001_F_W_WYT3_TO_BQ	WYT3	DATA_OCEAN_DOMAIN_PROCUREMENT	prj-data-dm-procurement-prod	STG_SPF_0000_0000_F001_F_W_WYT3	ODS_SPF_0000_F001_F_W_WYT3
F001_SPF_F001_F_W_EKPA_TO_BQ	EKPA	DATA_OCEAN_DOMAIN_PROCUREMENT	prj-data-dm-procurement-prod	STG_SPF_0000_0000_F001_F_W_EKPA	ODS_SPF_0000_F001_F_W_EKPA
F001_SPF_F001_F_W_NACH_TO_BQ	NACH	DATA_OCEAN_DOMAIN_PROCUREMENT	prj-data-dm-procurement-prod	STG_SPF_0000_0000_F001_F_W_NACH	ODS_SPF_0000_F001_F_W_NACH

F001_SPF_F001_F_W_LFB1_TO_BQ	LFB1	DATA_OCEAN_DOMAIN_PROCUREMENT	prj-data-dm-procurement-prod	STG_SPF_0000_0000_F001_F_W_LFB1	ODS_SPF_0000_F001_F_W_LFB1
F001_SPF_F001_F_W_LFM1_TO_BQ	LFM1	DATA_OCEAN_DOMAIN_PROCUREMENT	prj-data-dm-procurement-prod	STG_SPF_0000_0000_F001_F_W_LFM1	ODS_SPF_0000_F001_F_W_LFM1
F001_SPF_F001_F_W_LFZA_TO_BQ	LFZA	DATA_OCEAN_DOMAIN_PROCUREMENT	prj-data-dm-procurement-prod	STG_SPF_0000_0000_F001_F_W_LFZA	ODS_SPF_0000_F001_F_W_LFZA
F001_SPF_F001_F_W_T001_TO_BQ	T001	DATA_OCEAN_DOMAIN_PROCUREMENT	prj-data-dm-procurement-prod	STG_SPF_0000_0000_F001_F_W_T001	ODS_SPF_0000_F001_F_W_T001
F001_SPF_F001_F_W_T024E_TO_BQ	T024E	DATA_OCEAN_DOMAIN_PROCUREMENT	prj-data-dm-procurement-prod	STG_SPF_0000_0000_F001_F_W_T024E	ODS_SPF_0000_F001_F_W_T024E
F001_SPF_F001_F_W_T042L_TO_BQ	T042L	DATA_OCEAN_DOMAIN_PROCUREMENT	prj-data-dm-procurement-prod	STG_SPF_0000_0000_F001_F_W_T042L	ODS_SPF_0000_F001_F_W_T042L
F001_SPF_F001_F_W_ZZRS_EGT_T_TO_BQ	ZZRSEGT_T	DATA_OCEAN_DOMAIN_PROCUREMENT	prj-data-dm-procurement-prod	STG_SPF_0000_0000_F001_F_W_ZZRSEGT_T	ODS_SPF_0000_F001_F_W_ZZRSEGT_T
F001_SPF_F001_F_W_BSIK_TO_BQ	BSIK	DATA_OCEAN_DOMAIN_PROCUREMENT	prj-data-dm-procurement-prod	STG_SPF_0000_0000_F001_F_W_BSIK	ODS_SPF_0000_F001_F_W_BSIK
F001_SPF_F001_I_W_VTTK_TO_BQ	VTTK	DATA_OCEAN_DOMAIN_PROCUREMENT	prj-data-dm-procurement-prod	STG_SPF_0000_0000_F001_I_W_VTTK	ODS_SPF_0000_F001_I_W_VTTK

As part of DQ project, we have developed the below Talend jobs which gets the data from SAP tables related to **FINANCE** domain and ingest data into the respective STG/ODS tables. We are following the DataOcean standard jobs.

Talend Job name	Table name	Talend project	GCP Project	STG Table	ODS table
F001_TALEND_DO_BW_QRY_C_COSTCTR_0001_to_ODS	BW_QRY_C_COSTCTR_0001	DATA_OCEAN_DO_MAIN_FINANCE	prj-data-dm-finance-prod	STG_BWH_0000_0000_F001_F_W_BW_QRY_C_COSTCTR_0001	ODS_BWH_0000_F001_F_W_BW_QRY_C_COSTCTR_0001
F001_TALEND_DO_BW_QRY_C_PCOC01_0001_to_ODS	BW_QRY_CPCOCC01_0001	DATA_OCEAN_DO_MAIN_FINANCE	prj-data-dm-finance-prod	STG_BWH_0000_0000_F001_F_W_BW_QRY_CPCOCC01_0001	ODS_BWH_0000_F001_F_W_BW_QRY_CPCOCC01_0001
F001_TALEND_DO_BW_QRY_MPR_PS014_0011_to_ODS	BW_QRY_MPR_PS014_0011	DATA_OCEAN_DO_MAIN_FINANCE	prj-data-dm-finance-prod	STG_BWH_0000_0000_F001_F_W_BW_QRY_MPR_PS014_0011	ODS_BWH_0000_F001_F_W_BW_QRY_MPR_PS014_0011
F001_SPW_F001_F_W_CSXS_TO_BQ	CSXS	DATA_OCEAN_DO_MAIN_FINANCE	prj-data-dm-finance-prod	STG_SPW_0000_0000_F001_F_W_CSXS	ODS_SPW_0000_F001_F_W_CSXS
F001_SPW_F001_F_W_TKA01_TO_BQ	TKA01	DATA_OCEAN_DO_MAIN_FINANCE	prj-data-dm-finance-prod	STG_SPW_0000_0000_F001_F_W_TKA01	ODS_SPW_0000_F001_F_W_TKA01
F001_SPW_F001_F_W_TKA3A_TO_BQ	TKA3A	DATA_OCEAN_DO_MAIN_FINANCE	prj-data-dm-finance-prod	STG_SPW_0000_0000_F001_F_W_TKA3A	ODS_SPW_0000_F001_F_W_TKA3A
F001_SPW_F001_F_W_TKA3C_TO_BQ	TKA3C	DATA_OCEAN_DO_MAIN_FINANCE	prj-data-dm-finance-prod	STG_SPW_0000_0000_F001_F_W_TKA3C	ODS_SPW_0000_F001_F_W_TKA3C
F001_SPW_F001_F_W_T811C_TO_BQ	T811C	DATA_OCEAN_DO_MAIN_FINANCE	prj-data-dm-finance-prod	STG_SPW_0000_0000_F001_F_W_T811C	ODS_SPW_0000_F001_F_W_T811C
F001_SPW_F001_F_W_T811K_TO_BQ	T811K	DATA_OCEAN_DO_MAIN_FINANCE	prj-data-dm-finance-prod	STG_SPW_0000_0000_F001_F_W_T811K	ODS_SPW_0000_F001_F_W_T811K
F001_SPW_F001_F_W_T811S_TO_BQ	T811S	DATA_OCEAN_DO_MAIN_FINANCE	prj-data-dm-finance-prod	STG_SPW_0000_0000_F001_F_W_T811S	ODS_SPW_0000_F001_F_W_T811S
F001_SPW_F001_F_W_T811L_TO_BQ	T811L	DATA_OCEAN_DO_MAIN_FINANCE	prj-data-dm-finance-prod	STG_SPW_0000_0000_F001_F_W_T811L	ODS_SPW_0000_F001_F_W_T811L
F001_SPW_F001_F_W_TKB5A_TO_BQ	TKB5A	DATA_OCEAN_DO_MAIN_FINANCE	prj-data-dm-finance-prod	STG_SPW_0000_0000_F001_F_W_TKB5A	ODS_SPW_0000_F001_F_W_TKB5A
F001_SPW_F001_F_W_TKB5AL_TO_BQ	TKB5AL	DATA_OCEAN_DO_MAIN_FINANCE	prj-data-dm-finance-prod	STG_SPW_0000_0000_F001_F_W_TKB5AL	ODS_SPW_0000_F001_F_W_TKB5AL
F001_SPW_F001_F_W_TKB5B_TO_BQ	TKB5B	DATA_OCEAN_DO_MAIN_FINANCE	prj-data-dm-finance-prod	STG_SPW_0000_0000_F001_F_W_TKB5B	ODS_SPW_0000_F001_F_W_TKB5B
F001_SPW_F001_F_W_TKB5C_TO_BQ	TKB5C	DATA_OCEAN_DO_MAIN_FINANCE	prj-data-dm-finance-prod	STG_SPW_0000_0000_F001_F_W_TKB5C	ODS_SPW_0000_F001_F_W_TKB5C
F001_SPW_F001_F_W_TKB5D_TO_BQ	TKB5D	DATA_OCEAN_DO_MAIN_FINANCE	prj-data-dm-finance-prod	STG_SPW_0000_0000_F001_F_W_TKB5D	ODS_SPW_0000_F001_F_W_TKB5D
F001_SPW_F001_F_W_TKB5E_TO_BQ	TKB5E	DATA_OCEAN_DO_MAIN_FINANCE	prj-data-dm-finance-prod	STG_SPW_0000_0000_F001_F_W_TKB5E	ODS_SPW_0000_F001_F_W_TKB5E
F001_SPW_F001_F_W_TKB9A_TO_BQ	TKB9A	DATA_OCEAN_DO_MAIN_FINANCE	prj-data-dm-finance-prod	STG_SPW_0000_0000_F001_F_W_TKB9A	ODS_SPW_0000_F001_F_W_TKB9A
F001_SPW_F001_F_W_TKB9B_TO_BQ	TKB9B	DATA_OCEAN_DO_MAIN_FINANCE	prj-data-dm-finance-prod	STG_SPW_0000_0000_F001_F_W_TKB9B	ODS_SPW_0000_F001_F_W_TKB9B

F001_SPW_F001_F_W_TKB9C_TO_BQ	TKB9C	DATA_OCEAN_DO MAIN_FINANCE	prj-data-dm- finance-prod	STG_SPW_0000_0000_F001_F_W_TKB9C	ODS_SPW_0000_F001_F_W_TKB9C
F001_SPW_F001_F_W_TKB9D_TO_BQ	TKB9D	DATA_OCEAN_DO MAIN_FINANCE	prj-data-dm- finance-prod	STG_SPW_0000_0000_F001_F_W_TKB9D	ODS_SPW_0000_F001_F_W_TKB9D
F001_SPW_F001_F_W_TKB9E_TO_BQ	TKB9E	DATA_OCEAN_DO MAIN_FINANCE	prj-data-dm- finance-prod	STG_SPW_0000_0000_F001_F_W_TKB9E	ODS_SPW_0000_F001_F_W_TKB9E
F001_SPW_F001_F_W_TKB9F_TO_BQ	TKB9F	DATA_OCEAN_DO MAIN_FINANCE	prj-data-dm- finance-prod	STG_SPW_0000_0000_F001_F_W_TKB9F	ODS_SPW_0000_F001_F_W_TKB9F
F001_SPW_F001_F_W_TKB9G_TO_BQ	TKB9G	DATA_OCEAN_DO MAIN_FINANCE	prj-data-dm- finance-prod	STG_SPW_0000_0000_F001_F_W_TKB9G	ODS_SPW_0000_F001_F_W_TKB9G
F001_SPF_F001_F_W_CS_KS_TO_BQ	CSKS	DATA_OCEAN_DO MAIN_FINANCE	prj-data-dm- finance-prod	STG_SPF_0000_0000_F001_F_W_CS_KS	ODS_SPF_0000_F001_F_W_CS_KS
F001_SPF_F001_F_W_TKA01_TO_BQ	TKA01	DATA_OCEAN_DO MAIN_FINANCE	prj-data-dm- finance-prod	STG_SPF_0000_0000_F001_F_W_TKA01	ODS_SPF_0000_F001_F_W_TKA01
F001_SPF_F001_F_W_TKA3A_TO_BQ	TKA3A	DATA_OCEAN_DO MAIN_FINANCE	prj-data-dm- finance-prod	STG_SPF_0000_0000_F001_F_W_TKA3A	ODS_SPF_0000_F001_F_W_TKA3A
F001_SPF_F001_F_W_TKA3C_TO_BQ	TKA3C	DATA_OCEAN_DO MAIN_FINANCE	prj-data-dm- finance-prod	STG_SPF_0000_0000_F001_F_W_TKA3C	ODS_SPF_0000_F001_F_W_TKA3C
F001_SPF_F001_F_W_T811C_TO_BQ	T811C	DATA_OCEAN_DO MAIN_FINANCE	prj-data-dm- finance-prod	STG_SPF_0000_0000_F001_F_W_T811C	ODS_SPF_0000_F001_F_W_T811C
F001_SPF_F001_F_W_T811K_TO_BQ	T811K	DATA_OCEAN_DO MAIN_FINANCE	prj-data-dm- finance-prod	STG_SPF_0000_0000_F001_F_W_T811K	ODS_SPF_0000_F001_F_W_T811K
F001_SPF_F001_F_W_T811S_TO_BQ	T811S	DATA_OCEAN_DO MAIN_FINANCE	prj-data-dm- finance-prod	STG_SPF_0000_0000_F001_F_W_T811S	ODS_SPF_0000_F001_F_W_T811S
F001_SPF_F001_F_W_T811L_TO_BQ	T811L	DATA_OCEAN_DO MAIN_FINANCE	prj-data-dm- finance-prod	STG_SPF_0000_0000_F001_F_W_T811L	ODS_SPF_0000_F001_F_W_T811L
F001_SPF_F001_F_W_TKB5A_TO_BQ	TKB5A	DATA_OCEAN_DO MAIN_FINANCE	prj-data-dm- finance-prod	STG_SPF_0000_0000_F001_F_W_TKB5A	ODS_SPF_0000_F001_F_W_TKB5A
F001_SPF_F001_F_W_TKB5AL_TO_BQ	TKB5AL	DATA_OCEAN_DO MAIN_FINANCE	prj-data-dm- finance-prod	STG_SPF_0000_0000_F001_F_W_TKB5AL	ODS_SPF_0000_F001_F_W_TKB5AL
F001_SPF_F001_F_W_TKB5B_TO_BQ	TKB5B	DATA_OCEAN_DO MAIN_FINANCE	prj-data-dm- finance-prod	STG_SPF_0000_0000_F001_F_W_TKB5B	ODS_SPF_0000_F001_F_W_TKB5B
F001_SPF_F001_F_W_TKB5C_TO_BQ	TKB5C	DATA_OCEAN_DO MAIN_FINANCE	prj-data-dm- finance-prod	STG_SPF_0000_0000_F001_F_W_TKB5C	ODS_SPF_0000_F001_F_W_TKB5C
F001_SPF_F001_F_W_TKB5D_TO_BQ	TKB5D	DATA_OCEAN_DO MAIN_FINANCE	prj-data-dm- finance-prod	STG_SPF_0000_0000_F001_F_W_TKB5D	ODS_SPF_0000_F001_F_W_TKB5D
F001_SPF_F001_F_W_TKB5E_TO_BQ	TKB5E	DATA_OCEAN_DO MAIN_FINANCE	prj-data-dm- finance-prod	STG_SPF_0000_0000_F001_F_W_TKB5E	ODS_SPF_0000_F001_F_W_TKB5E
F001_SPF_F001_F_W_TKB9A_TO_BQ	TKB9A	DATA_OCEAN_DO MAIN_FINANCE	prj-data-dm- finance-prod	STG_SPF_0000_0000_F001_F_W_TKB9A	ODS_SPF_0000_F001_F_W_TKB9A
F001_SPF_F001_F_W_TKB9B_TO_BQ	TKB9B	DATA_OCEAN_DO MAIN_FINANCE	prj-data-dm- finance-prod	STG_SPF_0000_0000_F001_F_W_TKB9B	ODS_SPF_0000_F001_F_W_TKB9B
F001_SPF_F001_F_W_TKB9C_TO_BQ	TKB9C	DATA_OCEAN_DO MAIN_FINANCE	prj-data-dm- finance-prod	STG_SPF_0000_0000_F001_F_W_TKB9C	ODS_SPF_0000_F001_F_W_TKB9C
F001_SPF_F001_F_W_TKB9D_TO_BQ	TKB9D	DATA_OCEAN_DO MAIN_FINANCE	prj-data-dm- finance-prod	STG_SPF_0000_0000_F001_F_W_TKB9D	ODS_SPF_0000_F001_F_W_TKB9D
F001_SPF_F001_F_W_TKB9E_TO_BQ	TKB9E	DATA_OCEAN_DO MAIN_FINANCE	prj-data-dm- finance-prod	STG_SPF_0000_0000_F001_F_W_TKB9E	ODS_SPF_0000_F001_F_W_TKB9E
F001_SPF_F001_F_W_TKB9F_TO_BQ	TKB9F	DATA_OCEAN_DO MAIN_FINANCE	prj-data-dm- finance-prod	STG_SPF_0000_0000_F001_F_W_TKB9F	ODS_SPF_0000_F001_F_W_TKB9F
F001_SPF_F001_F_W_TKB9G_TO_BQ	TKB9G	DATA_OCEAN_DO MAIN_FINANCE	prj-data-dm- finance-prod	STG_SPF_0000_0000_F001_F_W_TKB9G	ODS_SPF_0000_F001_F_W_TKB9G

As part of DQ project, we have developed the below Talend jobs which gets the data from SAP tables related to **MARKETING** domain and ingest data into the respective STG/ODS tables. We are following the DataOcean standard jobs.

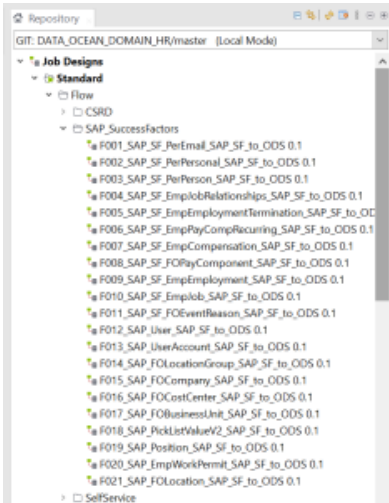
Talend Job name	table name	Talend project	GCP Project	STG Table	ODS table
F001_SPW_F001_F_W_KNA1_TO_BQ	KNA1	DATA_OCEAN_DOMAIN_MARKETING	prj-data-dm-marketing-dev	STG_SPW_0000_0000_F001_F_W_KNA1	ODS_SPW_0000_F001_F_W_KNA1
F001_SPW_F001_F_W_KNVV_TO_BQ	KNVV	DATA_OCEAN_DOMAIN_MARKETING	prj-data-dm-marketing-dev	STG_SPW_0000_0000_F001_F_W_KNVV	ODS_SPW_0000_F001_F_W_KNVV

F001_SPF_F001_F_W_KNA1_TO_BQ	KNA1	DATA_OCEAN_DOMAIN_MAR_KETING	prj-data-dm-marketing-dev	STG_SPF_0000_0000_F001_F_W_KNA1	ODS_SPF_0000_F001_F_W_KNA1
F001_SPF_F001_F_W_KNVV_TO_BQ	KNVV	DATA_OCEAN_DOMAIN_MAR_KETING	prj-data-dm-marketing-dev	STG_SPF_0000_0000_F001_F_W_KNVV	ODS_SPF_0000_F001_F_W_KNVV

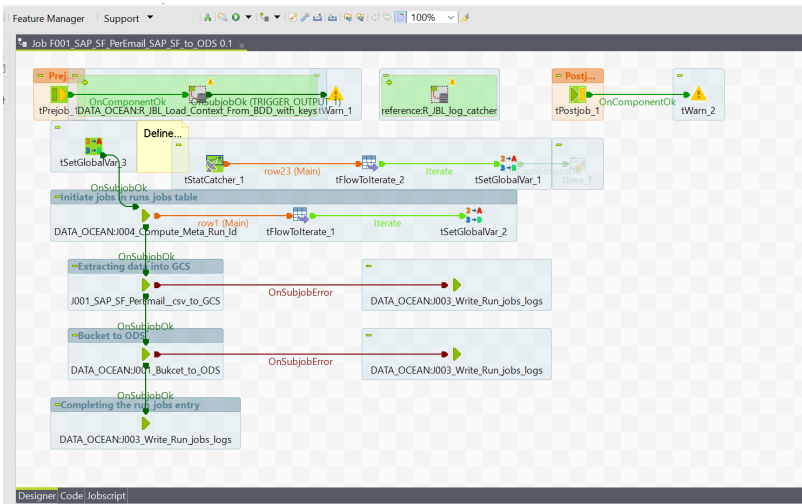
As part of DQ project, we have developed the below Talend jobs which gets the data from SAP tables and ingest data into the respective STG/ODS tables under **STRUCTURE**. We are following the DataOcean standard jobs.

Talend Job name	Table name	Talend project	GCP Project	STG Table	ODS table
F001_SPW_F001_F_W_T001W_TO_BQ	T001W	DATA_OCEAN_DOMAIN_STRUCTURE	prj-data-dm-structure-prod	STG_SPW_0000_0000_F001_F_W_T001W	ODS_SPW_0000_F001_F_W_T001W
F001_SPW_F001_F_W_TVKO_TO_BQ	TVKO	DATA_OCEAN_DOMAIN_STRUCTURE	prj-data-dm-structure-prod	STG_SPW_0000_0000_F001_F_W_TVKO	ODS_SPW_0000_F001_F_W_TVKO
F001_SPW_F001_F_W_MVKE_TO_BQ	MVKE	DATA_OCEAN_DOMAIN_STRUCTURE	prj-data-dm-structure-prod	STG_SPW_0000_0000_F001_F_W_MVKE	ODS_SPW_0000_F001_F_W_MVKE
F001_SPW_F001_F_W_TVTA_TO_BQ	TVTA	DATA_OCEAN_DOMAIN_STRUCTURE	prj-data-dm-structure-prod	STG_SPW_0000_0000_F001_F_W_TVTA	ODS_SPW_0000_F001_F_W_TVTA
F001_SPW_F001_F_W_TVTW_TO_BQ	TVTW	DATA_OCEAN_DOMAIN_STRUCTURE	prj-data-dm-structure-prod	STG_SPW_0000_0000_F001_F_W_TVTW	ODS_SPW_0000_F001_F_W_TVTW
F001_SPW_F001_F_W_TSPA_TO_BQ	TSPA	DATA_OCEAN_DOMAIN_STRUCTURE	prj-data-dm-structure-prod	STG_SPW_0000_0000_F001_F_W_TSPA	ODS_SPW_0000_F001_F_W_TSPA
F001_SPW_F001_F_W_TVKOV_TO_BQ	TVKOV	DATA_OCEAN_DOMAIN_STRUCTURE	prj-data-dm-structure-prod	STG_SPW_0000_0000_F001_F_W_TVKOV	ODS_SPW_0000_F001_F_W_TVKOV
F001_SPW_F001_F_W_TVKOS_TO_BQ	TVKOS	DATA_OCEAN_DOMAIN_STRUCTURE	prj-data-dm-structure-prod	STG_SPW_0000_0000_F001_F_W_TVKOS	ODS_SPW_0000_F001_F_W_TVKOS
F001_SPW_F001_F_W_ZWOCT086_TO_BQ	ZWOCT086	DATA_OCEAN_DOMAIN_STRUCTURE	prj-data-dm-structure-prod	STG_SPW_0000_0000_F001_F_W_ZWOCT086	ODS_SPW_0000_F001_F_W_ZWOCT086
F001_SPW_F001_F_W_TFACD_TO_BQ	TFACD	DATA_OCEAN_DOMAIN_STRUCTURE	prj-data-dm-structure-prod	STG_SPW_0000_0000_F001_F_W_TFACD	ODS_SPW_0000_F001_F_W_TFACD
F001_SPW_F001_F_W_TVKOT_TO_BQ	TVKOT	DATA_OCEAN_DOMAIN_STRUCTURE	prj-data-dm-structure-prod	STG_SPW_0000_0000_F001_F_W_TVKOT	ODS_SPW_0000_F001_F_W_TVKOT
F001_SPF_F001_F_W_T001W_TO_BQ	T001W	DATA_OCEAN_DOMAIN_STRUCTURE	prj-data-dm-structure-prod	STG_SPF_0000_0000_F001_F_W_T001W	ODS_SPF_0000_F001_F_W_T001W
F001_SPF_F001_F_W_TVKO_TO_BQ	TVKO	DATA_OCEAN_DOMAIN_STRUCTURE	prj-data-dm-structure-prod	STG_SPF_0000_0000_F001_F_W_TVKO	ODS_SPF_0000_F001_F_W_TVKO
F001_SPF_F001_F_W_MVKE_TO_BQ	MVKE	DATA_OCEAN_DOMAIN_STRUCTURE	prj-data-dm-structure-prod	STG_SPF_0000_0000_F001_F_W_MVKE	ODS_SPF_0000_F001_F_W_MVKE
F001_SPF_F001_F_W_T134G_TO_BQ	T134G	DATA_OCEAN_DOMAIN_STRUCTURE	prj-data-dm-structure-prod	STG_SPF_0000_0000_F001_F_W_T134G	ODS_SPF_0000_F001_F_W_T134G
F001_SPF_F001_F_W_TGSB_TO_BQ	TGSB	DATA_OCEAN_DOMAIN_STRUCTURE	prj-data-dm-structure-prod	STG_SPF_0000_0000_F001_F_W_TGSB	ODS_SPF_0000_F001_F_W_TGSB
F001_SPF_F001_F_W_TFACD_TO_BQ	TFACD	DATA_OCEAN_DOMAIN_STRUCTURE	prj-data-dm-structure-prod	STG_SPF_0000_0000_F001_F_W_TFACD	ODS_SPF_0000_F001_F_W_TFACD
F001_SPF_F001_F_W_TVKOT_TO_BQ	TVKOT	DATA_OCEAN_DOMAIN_STRUCTURE	prj-data-dm-structure-prod	STG_SPF_0000_0000_F001_F_W_TVKOT	ODS_SPF_0000_F001_F_W_TVKOT

## Talend Flow Explanation

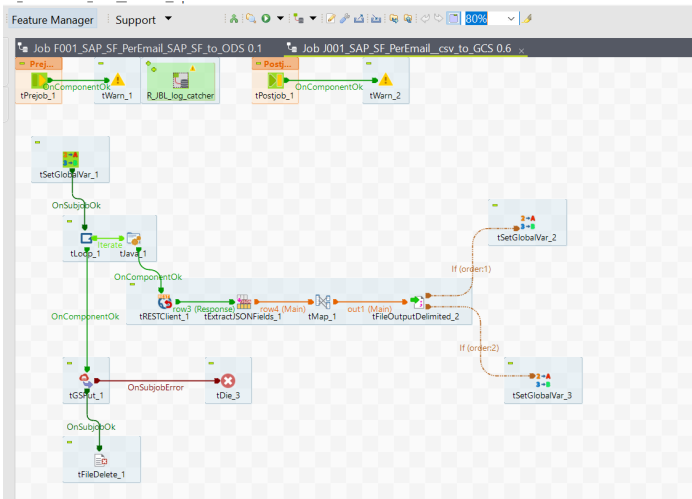


## Main Flow



- Setup meta\_run\_id and filename of the output file.
- Call the Rest API Job (J001\*) which will invoke the SuccessFactor Rest API to extract the data (full) and load and save the file to GCS.
- Call the standard job to upload the files from GCS to ODS.
- If everything is OK, update the log.

We are following the DataOcean standard Jobs except the J001\* (SuccessFactor Rest API) job which is explained below:



The above job invokes the SuccessFactor Rest API (by passing the username / password) to extract the data. Below are the main SuccessFactor parameters which are getting used while extraction, these parameters are common to all the SuccessFactor jobs.

- `_VAR_SAP_SF_ENV`: This parameter will contain DEV / PROD as the value, this is to mask the confidential information. If its DEV then the column will get populated with "" in the BQ tables, if PROD then it will have the source value in the target BQ.
- `_VAR_SAP_SF_LIMIT`: This parameter is used to manage the number of records per iteration.
- `_VAR_SAP_SF_URL`: This parameter is used to hold the SuccessFactor REST API URL.
- `_VAR_SAP_SF_PASSWORD`: This parameter is used to store the password required to invoke the API.
- `_VAR_SAP_SF_USERNAME`: This parameter is used to store the username required to invoke the API.

## Possibilities for the Talend job failure

As this is a full extract job and we are not doing any transformation (its 1:1 mapping), so the possibilities of failure could be one of the below

- STG / ODS table not present.
- Credentials issue (i.e. incorrect Username / Password) to access the SuccessFactor RestAPI, in that case you can reach out to [perreira@solway.com](mailto:perreira@solway.com), she can help with the credentials.
- RestAPI error, if the API is not accessible.
- Talend RemoteServer Issue.

Once the issue is fixed, we can rerun the job from start and it will create the file again and load the data and there will be no loss of data.

## Data Validation/Troubleshoot queries

### Data Validation

<Provide the SQL queries to validate the data or the record count in the BQ target tables>

### Logging

<Details about the log tables in Big query>

### Troubleshoot

<Provide the steps to debug the ETL flow in case of failure. For example, if an ETL job fails, how should we trigger it? Can we directly rerun the job, or are there steps to delete the data from the previous execution before rerunning the job? or any change should be made in the context table for date executions>

## Failed Records

### Description

As part of HR DQ project, we have developed the below Talend jobs about running some data quality validation queries and writing the results in Google Drive files.

Talend Job Name	Talend Project	GCP Project	
F001_BQ_to_Gsheet_Drive_Selfservice 0.1	DATA_OCEAN_DOMAIN_HR	prj - data - dq - selfservice - dev	
J001_BQ_to_Gsheet_Drive_Selfservice 1.1	DATA_OCEAN_DOMAIN_HR	prj - data - dq - selfservice - dev	

## Source

This job uses data quality queries stored in prj-data-dq-selfservice-dev.DM.Dataplex\_quality table and prj-data-dq-selfservice-dev.DataOcean\_dataquality\_kpi schema.

## Destination

The data quality quality executed queries are materialized in Google Drive Failed Records folder.

Drive Id:

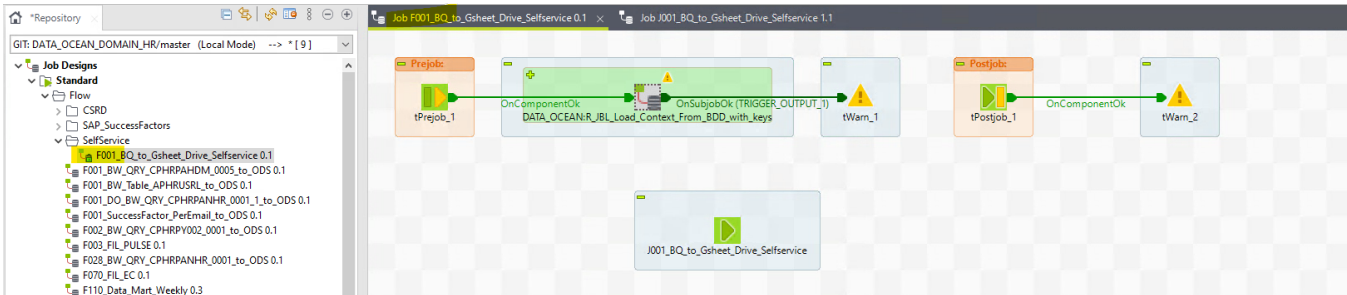
Shared with me > 8.1. Failed Records Repo... ▾ 🗑

Type ▾ People ▾ Modified ▾ Source ▾

Name ▾	Last modified ▾
UAT	Jan 31, 2025 Filipa Lobato
PRD	Feb 3, 2025 Filipa Lobato
PPRD	Jan 31, 2025 Filipa Lobato
DEV	Feb 3, 2025 Filipa Lobato

## Main Flow

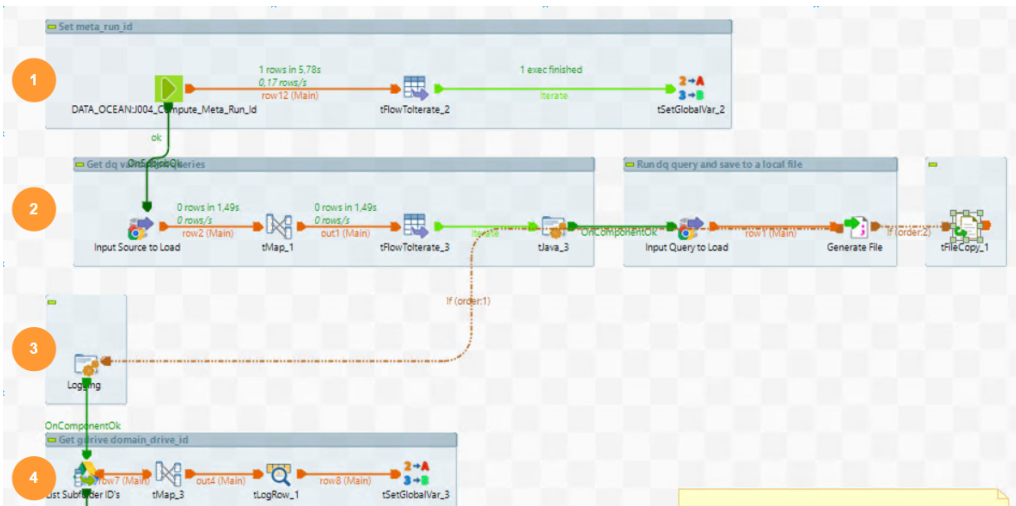
### F001\_BQ\_to\_Gsheet\_Drive\_Selfservice



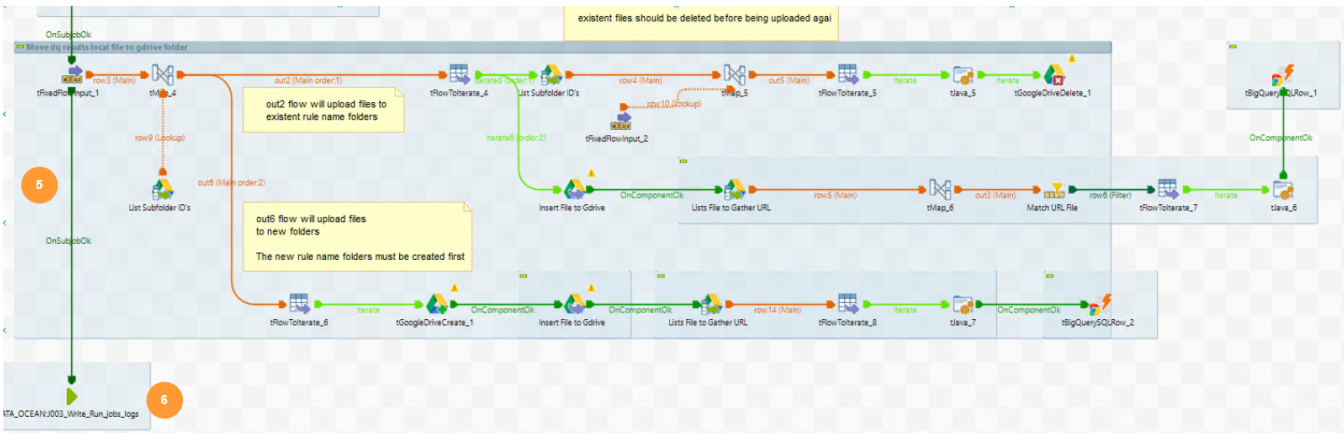
This job points to J001\_BQ\_to\_Gsheet\_Drive\_SelfService job, which has all the detailed business rules.

### J001\_BQ\_to\_Gsheet\_Drive\_Selfservice

P1



P2



1. Set meta\_run\_id.
2. Get Data Quality SQL queries to run / Run query and store results in local file.
3. Set internal variables.
4. Get the Google Drive domain code folder Id.
5. For every local file generated in step 2, the process uploads the file to Google Drive Rule Name folder. This flow has a sub-process to create new rule name folders.
6. Write Talend Job Log.

## Plan to Schedule

← **F001\_BQ\_to\_Gsheet\_Drive\_Selfservice** Run now Pause Edit

Task ID  
6763bbbe63ac937f0788509

Tags  
None

Environment  
default

Workspace  
WS\_DATA\_OCEAN\_DOMAIN\_HR

Author  
felipe motoie

Description  
Cored Job to run BW HR query - CSV - STG - ODS

**Trigger (V6)**

Trigger type  
Weekly (1)  
Daily\_Execution\_Gdrive  
Starting from: 2025-02-26 (UTC +00:00) Lisbon  
Repeat every week  
On: Monday, Tuesday, Wednesday, Thursday, Friday  
Repeat at 08:00

**Configuration**

Artifact (Job)  
F001\_BQ\_to\_Gsheet\_Drive\_Selfservice (0.1:3)

Parameters  
Processor

**Run history**

Status	Trigger time	Duration	Version	Engine
Successful	Wed 2025-02-26 11:09:11	1m 25s	V6	RE_AWS_Windows
Artifact : F001_BQ_to_Gsheet_Drive_Selfservice(0.1.3) Engine : Remote Engine RE_AWS_Windows Log level : Warning Run start time : Wed 2025-02-26 11:09:11 Execution : Manual Java version : 11.0.14.1				
Successful	Wed 2025-02-26 09:52:33	24s	V5	RE_AWS_Windows

**Next 5 runs**

Trigger time

- Thu 2025-02-27 08:00:00
- Fri 2025-02-28 08:00:00
- Mon 2025-03-03 08:00:00
- Tue 2025-03-04 08:00:00
- Wed 2025-03-05 08:00:00

From Monday to Friday at 08am

## Logs

```
select *
from `STG.run_jobs`
where job_name = 'J001_BQ_to_Gsheet_Drive_Selfservice'
order by meta_end_date desc
```