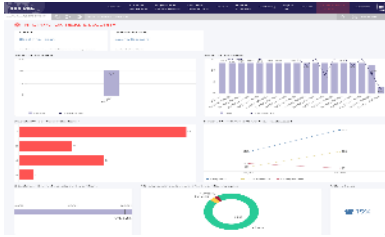


SBS KPIs Dashboard - Information Risks & Security



KPIs Owners

Janis Cimermanis - Security Patches - Clients & Servers

Antonio-Michele Giustino - Industrial Site per Security Classification, Industrial Site with Target ICS Architecture Implemented

Hiroaki TAKAHASHI - Employee E-Security Training

SBS Decision & Piloting Solutions Team

Worldwide Solutions:

- Marie-Line Ardito

Regional Animators:

- Stephane Bourgeaud-Lignot/Emma Glasson (EMEA)
- Karina Tsuji (LATAM & NAM)
- Lilian Cheong (APAC)

General Description

Focusing on IT security indicators (be it desktop, server, architecture by site and employee awareness). These indicators are:

- Security Patches Servers / Clients : PCs/Servers protected - number of PCs being patched and number of tasks patches in Servers and the percentage achieved
- ICS Architecture implemented : Monitoring security architecture by site with risk classification ranking and cost impact when non business days
 - 3 levels of Security Architectures:
 - IT SBS
 - GEC OT
 - IT SBS & GEC OT
- Employee with a valid e-security training Certificate:
 - Percentage of employee with valid E-Security Training Certification
 - Percentage of employee with valid E-Security Training Certification by status
 - Never passed = with no date for E-security training
 - Expired = E-security training date >= 1year
 - Valid = E-security training date < 1year
- Percentage of Blocked users

Target Users

- SBS Management Committee
- GBU Managers
- Audit Team

Authorization & Rights

Request for accesses

[Access Request Form](#)

| Source | |
|----------------------------|---|
| Security Patches - Servers | Extraction from Salesforce (Remedy) |
| Security Patches - Clients | Manual file (Getronics) (\\WDCQSAP31\SBS KPIs - Manual Sources) |
| ICS Architecture | Manual file (\\WDCQSAP31\SBS KPIs - Manual Sources) |
| Employee E-Security | SQL from Nets |
| Refresh Frequency: | Monthly |