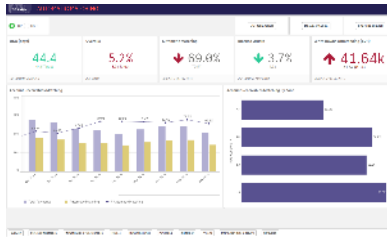


Automatic Matching



KPI Owner
 Claudrik Darnet / Ellon Alves

SBS Decision & Piloting Solutions Team

WW Solutions:

- Donia Rachdi

Regional Animator:

- Emma Glasson (EMEA)
- Karina Tsuji (LATAM+NAM)
- Lilian Cheong (APAC)

General Description

This indicator explores payments that are matching automatically with invoices in the service centers.

The trend chart that displays the amount of automatic matching vs. the amount of total payments by month at the same time provides the percentage of matched each month.

On the other chart, it has the table displays the percentage of automatic matching by payer geographical zone.

KPI Name	Calculation
Percentage of Automatic Matching	= Amount of Automatic Matching / Total Amount of Payment

Former source of information:

Manual Source	As SAP does not cover all invoices, the BW query was replaced by a manual file monthly completed by Credit Managers. Global Master File
Refresh frequency	Monthly, according to data provided by the dedicated teams
Core Query:	BW_QRY_MVFIAR06_0003
QV Query:	QVSBS_BW_QRY_MVFIAR06_0003
BW Filters:	<ul style="list-style-type: none"> Document number (DZ) <ul style="list-style-type: none"> 450* 600* 870* Doc type (TI) <ul style="list-style-type: none"> TO G/L Account (TI) <ul style="list-style-type: none"> 505++++15 505++++16 505++++17 50561USD14 Statement Date
Refresh Frequency:	Monthly (during closure on 1st to 6th 3 times per day)
**Missing Dimensions from SBS_OtC	If you do not find the same dimensions you used to see in SBS_OtC, please refer here for details.