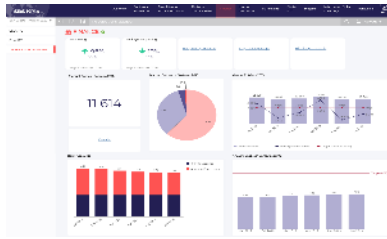


# Technology Leverage



## KPI Owner

Frances Zhang

## SBS Decision & Piloting Solutions Team

### WW Solutions:

- Marie-Line Ardito

### Regional Animator:

- Stephane Bourgeaud-Lignot/Emma Glasson (EMEA)
- Karina Tsuji (LATAM & NAM)
- Lilian Cheong (APAC)

## General Description

In this page, it shows the number of manual postings done during closing. With this, there is an aim to reduce the manual posting by 40% when compared versus 2018. Another indicator is the number of Swift Enabled bank accounts. It is target to have more than 80% of bank accounts being Swift Enabled.

## Reduction of Manual Entries

Number of manual journal entries processed in SAP during the peak time (including CO manual postings) excluding RPA postings

- Extraction of manual postings from the 4 ERPs: PF1, WP1, PI1 and PE1 - FB03 transaction
- Period range: peak time => entry date from D-3 to D4
- Criteria: manual document types, as per [doc type matrix](#)
- Exclusions:
  - automatic reversals (FB08 transaction)
  - Purchasing scope transactions using Finance doc types: MIRO, MR8M
  - RPA user id:

PT99376135

RPA\_RTR\_1, RPA\_RTR\_2, RPA\_RTR\_3, RPA\_RTR\_4, RPA\_RTR\_5, RPA\_RTR\_6, RPA\_RTR\_7, RPA\_RTR\_8, RPA\_RTR\_9,  
RPA\_RTR\_10, RPA\_RTR\_11, RPA\_RTR\_12, RPA\_RTR\_13, RPA\_RTR\_14

- BECICC user (for PI1)
- Batch inputs sessions (\*Batch\*)
- Comparison between month of KPI reporting vs baseline

### Target:

Reduction of manual entries by 40% when compared to previous year (Dec Y-1 as reference)

### Refresh:

Monthly

## Swift Enabled Bank Accounts

% of bank accounts which are linked to Swifnet. Bank statements (MT940) are received on daily basis via Swift network, then uploaded and accounted automatically in ERPs. Payments are processed in SAP and delivered STP to bank via Swift network.

Number of Swift bank account vs total number of bank account in Solvay Group

- Legal Entity with control >50% => Source: AODOCS GAR List (column "Control %")
- Total number of Bank Accounts => Source: Dilitrust report extracted to excel
  - Some filters are applied:

Multicurrency = Main Account

Account status <> Closed, Closing Process, transferred

sub status <> technical account

- Total number of Swift Accounts => Source: SAP

Bank accounts which enable to receive electronic bank statements (MT940 message from Swift secured network)

- Calculation: total number of Swift accounts / the total number of bank accounts

**Target: >80%**

**Source:**  
**google sheet (data coming from Dilitrust eBAM -bank account repository)**

**Refresh:**  
**monthly**

<b>Sources</b>	
Manual file compiled by Finance. Underlying data coming from ERP (PF1, WP1, PI1 and PE1 )	<a href="https://docs.google.com/spreadsheets/d/12OLkXx9xGxummBRkMVNSm1ry2iNh1CLRVOa3gOnjQr4/edit#gid=1999081534">https://docs.google.com/spreadsheets/d/12OLkXx9xGxummBRkMVNSm1ry2iNh1CLRVOa3gOnjQr4/edit#gid=1999081534</a>
Refresh frequency	Monthly