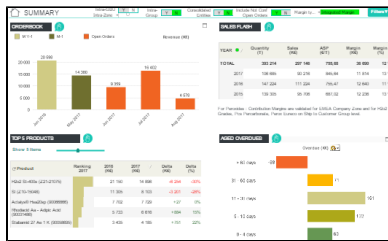


Archived - Validation Contacts and Data Stewards



Process Owner

GBU Sales & Marketing / Finance

CRM Champions:

- Novecare - Pam Accardi, Mildred Estrada, Eduardo Scavone, Aude Trepier
- Polytechnly - Alexandra Kiefer
- Peroxides - Amandine Contrino
- Soda Ash & Derivatives - Patrick Roumegoux
- Special Chem. - Evita Markus
- Aroma Performance - Amel Gherbia
- Silica - Perrine Gillot
- Coatis - Ricardo Juliano/Kayte Santana / Nathalia Costa
- Technology Solutions - Evita Markus
- Composite Materials - Natacha Prenen
- Oil & Gas - Tim Wiggins
- MBU - Christine Deteve/Guillaume Bucco
- Specialty Polymers - Andrea Pappada (Icare)

GBU CRM Data Stewards:

(validation of Corporate Group assignments)

- Novecare - Pam Accardi / Yoomi Kim
- Peroxides - Natacha Prenen
- Soda Ash & Derivatives - Philippe Habraken
- Special Chem. - Rolf Tarrach
- Aroma Performance - Amel Gherbia
- Silica - Amel Gherbia
- Coatis - Kayte Santana / Nathalia Costa
- Oil & Gas: Camila Guimaraes / Mark Farrales
- Technology Solutions - Evita Markus
- Specialty Polymers - Sarah Chattin (iCare)

Target Users

- Sales
- Marketing
- Controlling
- Supply Chain
- Quality

Authorization & Rights

All the accesses must be validated by:

[GBU CRM Champions](#)

or

Immediate Supervisor for Novecare GBU.

Margin data **MUST** be validated by CRM Champions/Finance Directors

Click here for the [Access form](#) to get access to Analytics.

Access Rights and Dashboard Entry Points - Click [here](#) for descriptions.