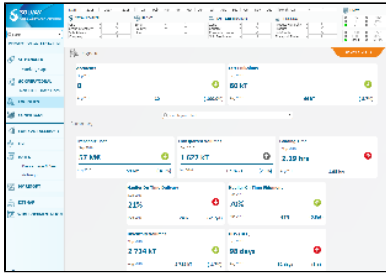


Logistics

QlikView is decommissioned and replaced by Tableau interface not handling the access by Supply Chain users "profile" - this page is no more relevant



Supply Chain Excellence

D&PS Expert

Donia Rachdi

General Description

This page is dedicated to the list of target users to the right, and gives an overview on a the Operational activities focused on **Transport KPIs**. The page focuses on **Current Month** and is compared to previous month.

The selection of KPIs are not exhaustive to what exists in the dashboard but are the ones found most interesting to the target users of this persona.

These figures give an overview globally on a GBU level at first glimpse and we invite target users to select their plant.

If more details are needed for a specific KPI, you may click on the corresponding Highlights box.

List of KPIs

[Accidents](#)

[CO2 Emissions](#)

[Transport Cost](#)

[Transported Volumes](#)

[Transport > Loading Time](#)

[Haulier On Time Delivery](#)

[Haulier On Time Shipment](#)

[Inventory Volumes \(BW\)](#)

[DOS \(BFC\)](#)

Target Users

- Logistics Manager
- Distribution Manager
- Warehouse Manager

Authorization & Rights

All the accesses must be validated by:

[Supply Chain Excellence](#)

Click here for the [Access form](#) to get access to the Global Supply Chain Dashboard.