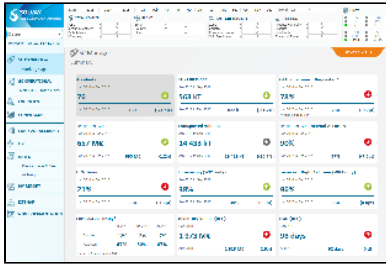


SC Manager

QlikView is decommissioned and replaced by Tableau interface not handling the access by Supply Chain users "profile" - this page is no more relevant



Supply Chain Excellence

D&PS Expert
Donia Rachdi

General Description

This page is dedicated to the list of target users to the right, and gives a complete overview on a **YTD basis** compared with YTD from previous year.

The selection of KPIs are not exhaustive to what exists in the dashboard but are the ones found most interesting to the target users of this persona.

These figures give an overview globally on a GBU level, then split by region and plant in the bottom graph. The graph corresponds to the KPI selected by clicking on one of the boxes.

If more details are needed for a specific KPI, you may click on the Details buttons.

List of KPIs
Accidents (not maintained)
CO2 Emissions
OTIF Customer - Requested
Transport Cost
Transported Volumes
Transport Cost Acrual Accuracy
E-Ordering
E-Invoicing
Invoices - Right 1st Time
Forecast Accuracy
Inventory Value (BFC)
DOS (BFC)

Target Users

- Global Supply Chain Managers
- Regional Supply Chain
- Local Supply Chain
- Supply Chain Analyst
- S&OP Manager
- Purchasing Manager / Buyers
- Supply Chain Excellence

Authorization & Rights

All the accesses must be validated by:

[Supply Chain Excellence](#)

Click here for the [Access form](#) to get access to the Global Supply Chain Dashboard.