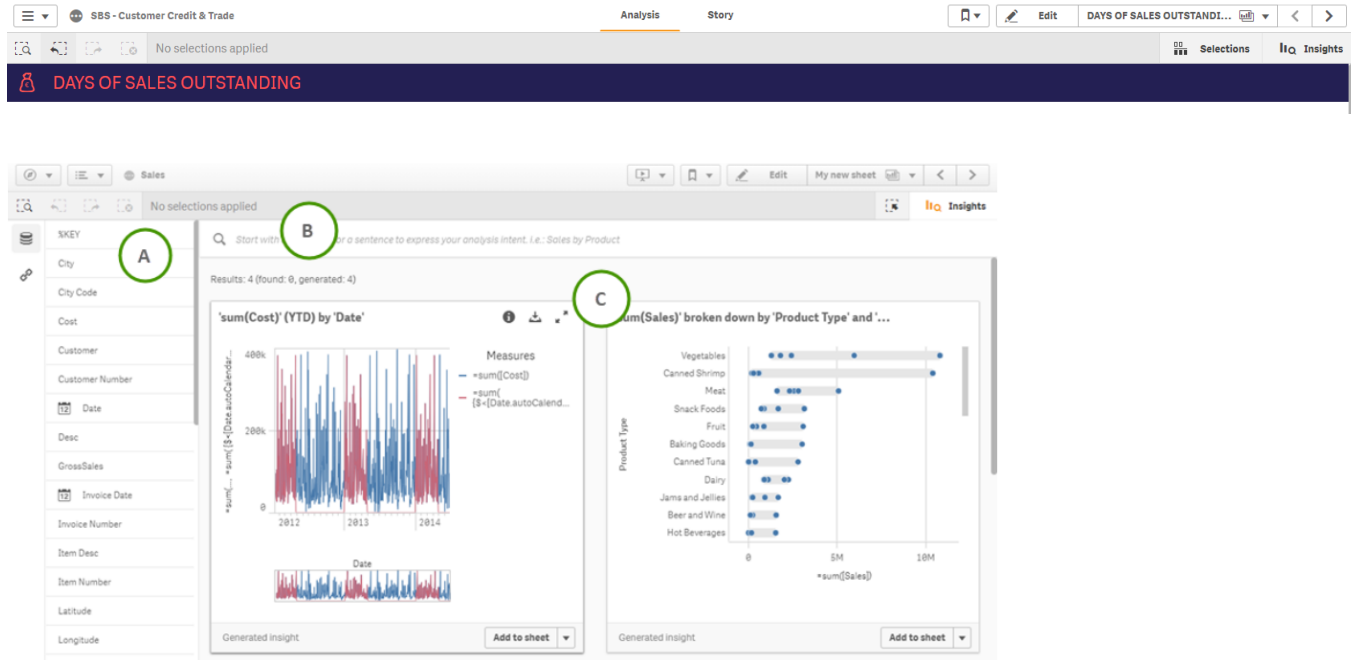


User Guide - Insights

Creating visualizations from your data using insight advisor

If you do not know exactly what information exists in your app data or are new to creating visualizations with Qlik Sense, determining which visualizations to use with which fields can be a challenge. Insight advisor provides an entry point to both exploring your data and creating visualizations for your sheets. It uses the Qlik cognitive engine to suggest charts based on all the data you have loaded into Qlik Sense. You can then add the suggested charts to your sheets.

How to access ?



A: Fields and master items

The available assets (fields and master items) for creating insight charts. You can access fields by clicking



and master items by clicking



B: Insight search field

In unpublished apps enter field names or values, and master item names to search for charts using those fields. In published apps enter master item names. Fields and master items selected from the assets are added to the insight search field.

C: Insight charts

The insight charts created by insight advisor. Insight advisor indicates the number of results and the breakdown of which results are found, charts already existing in your sheets, or generated, charts newly generated by insight advisor.

You can view chart information, such as if a chart is generated or found, by clicking]. The insight chart can be downloaded as image, PDF, or as a spreadsheet by clicking . You can expand a chart by selecting it or clicking s.

If an insight chart is new, you can add it to your sheets. If the insight chart exists already, you can click the sheet name at the bottom of the chart to go to that page.