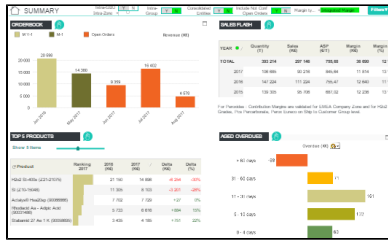


Access Rights and Dashboard Entry Points



Process Owner

GBU Sales & Marketing / Finance

Access Rights and Dashboard Entry Points:

Entry Points - Users may use the Analytics dashboard via 2 different paths depending on whether or not the user has access to Sales Force.

1. Colleagues who do not need Sales Force access may still access Analytics. The entry point for these users will be the traditional Qlikview AccessPoint. Click [here](#) and save the link to your favorites.
2. Sales Force users should enter via the "Analytics" tab. You may have to add the tab by using the "+" sign in Sales Force.

Access Rights - Depending on whether or not the user has access to the CRM Sales Force, requesting accesses and validation processes may differ.

1. Sales Force users should enter a "Need Help" request directly in Sales Force, which will create a ticket in Freshdesk in order to request or modify their Analytics accesses. **Validation** will be done as each GBU directs.
2. Colleagues who do not have Sales Force can request access by completing this [form](#). **Validation** in this case will be done with your GBU's CFO or world wide financial controller.
3. The same rules are applied for the Quality part of the dashboard.
 - If the user has access to Analytics via Sales Force they automatically have access to the Quality part.
 - If they do not have access to Sales Force or have access but are not granted rights to Analytics, they can request a specific access to only quality. This may be done via the above form by specifying quality dashboard in the text. These users have to access via the Qlikview [AccessPoint](#).
 - The **validation** for users to access via Qlikview AccessPoint will be done by the GBU's quality manager.

For [Analytics](#), the access rights may be restricted by the following perimeters (this doesn't apply for the Quality pages):

- GBU
- Group of Activity
- Region
- with or without Margin
- Sales Rep code

For [CRM Quality](#) pages: The only restriction is by GBU and uses the GBU field from SFDC or our additional excel file.

For BW Access, click [HERE](#).

Target Users

- Sales
- Marketing
- Controlling
- Supply Chain
- Quality

Authorization & Rights

All the accesses must be validated by:

[GBU CRM Champions](#)

or

Immediate Supervisor for Novecare GBU.

Margin data MUST be validated by CRM Champions/Finance Directors

Click here for the [Access form](#) to get access to Analytics.