

# zzz PROBAN

---

- [Status on 26/02/2021](#)
  - [Status on 11/06/2019](#)
  - [What is PROBAN ?](#)
  - [Contacts](#)
  - [Overview](#)
  - [Database Diagram](#)
  - [Data Loading](#)
  - [Universe Documentation](#)
  - [Main BI4 Core Reports](#)
- 

## Status on 26/02/2021

**End of PROBAN in BI4 ...**

**[Ticket ID \[#5251815\] Decomm BI4 folder "522 - Proban"](#)**

Re: PROBAN BI4 queries Boîte de réception x



**SMITH, Tim**

À moi ▾

Hello Laurence,

We need to keep access to the e-room, please go ahead and decommission BI4.

Regards,

Tim,

---

## Status on 11/06/2019

**PROBAN is no more populated in BI4 with new data as e-room transferred to AO-Doc  
But should be kept (possible to refresh) to have access to historical data**

[eRoom migration - Proban - 11062019](#)

## What is PROBAN ?

Objective : Fire tests in textiles. Wash textiles and then practice tests against fire.  
If test is successful they produce a certificate.

PDF certificate is built in BI4.

<https://www.solvay-proban.com/en/index.html>

[https://www.solvay-proban.com/en/binaries/2015-Solvay-Proban%20Flyer%20\(English\)-228080.pdf](https://www.solvay-proban.com/en/binaries/2015-Solvay-Proban%20Flyer%20(English)-228080.pdf)

<https://www.solvay.com/en/markets-and-products/featured-products/Proban.html>

What is PROBAN®?

PROBAN® is a quality controlled technological process that gives cotton and cotton rich woven and knitted textiles flame retardant properties that are durable to long term use. Articles manufacture from PROBAN® fabrics provide **reliable flame retardant performance** and peace of mind to industrial, institutional and end-consumers through-out the world while conforming with industry fire regulations.

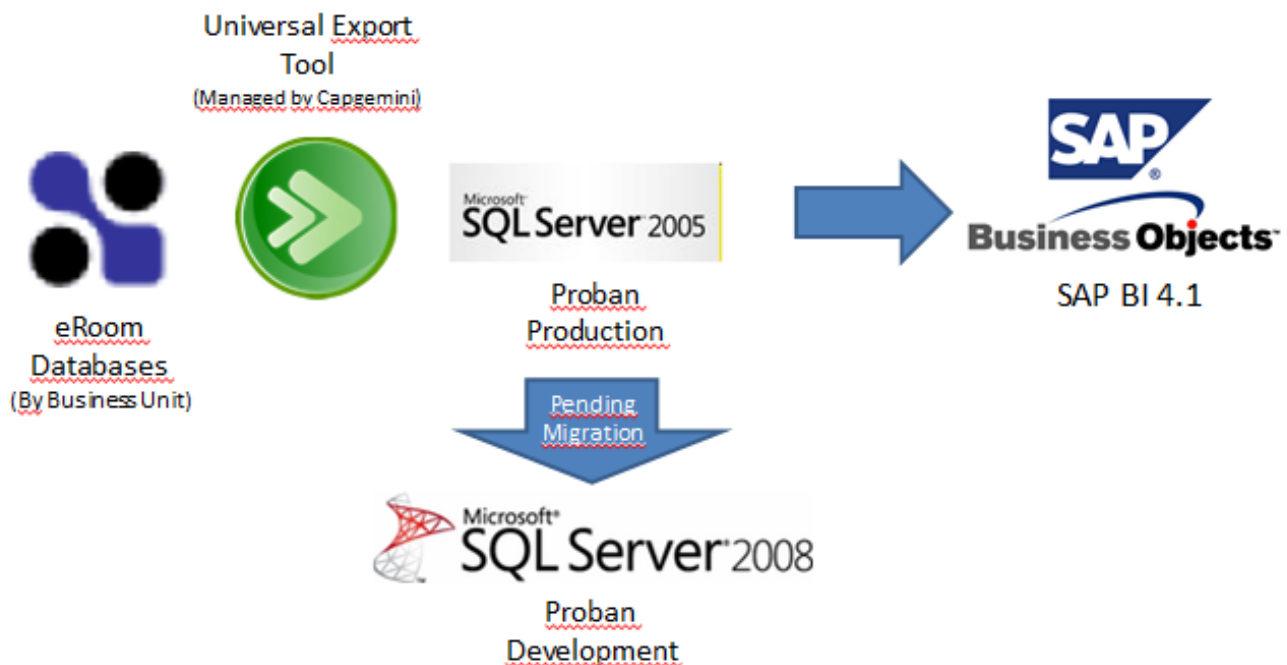
## Contacts

PROBAN application owner : Tim Smith

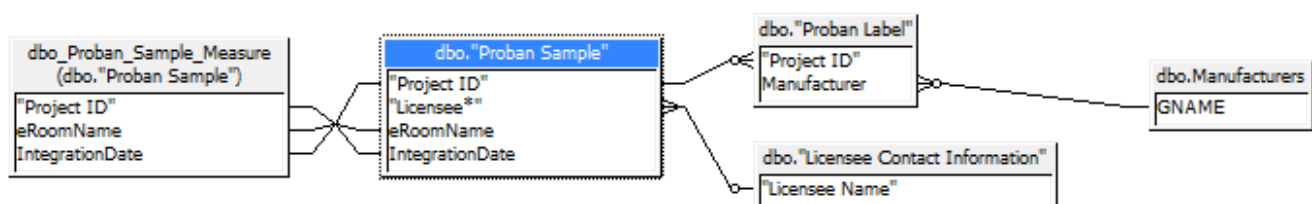
Team responsible for database replication : [SBS-IS-Appli-Techno-DM-OPERATIONS@solvy.com](mailto:SBS-IS-Appli-Techno-DM-OPERATIONS@solvy.com) (coordinator : Valéria Carvalho)

## Overview

Quality Control Labels for analysis results of samples.



## Database Diagram



# Data Loading

Proban snapshots are created in SQLServer replicated database five times a week (Monday, Tuesday, Wednesday, Thursday and Friday) from eRoom databases.

Anyway only the latest snapshot copy for each month is kept in the replicated sqlserver database.

# Universe Documentation

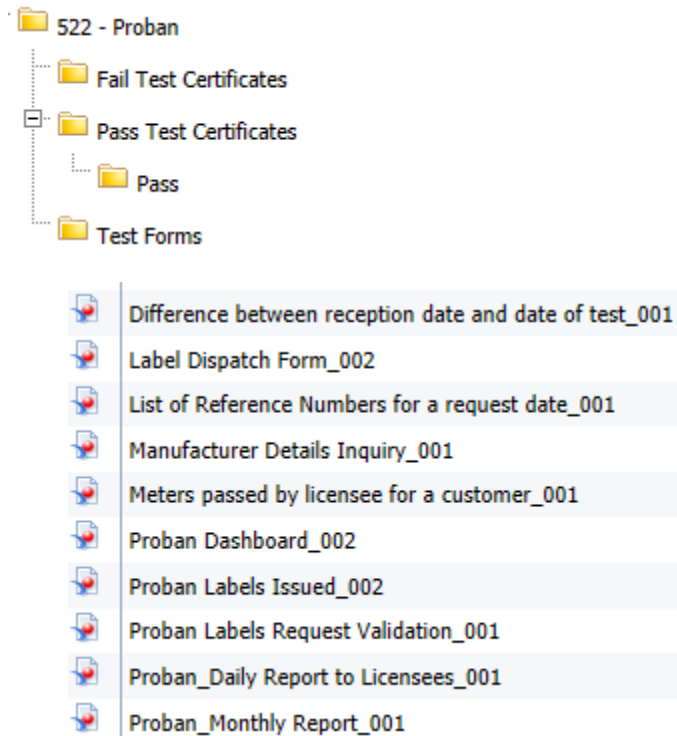
## Proban

- 5 classes
- 136 objects
- 0 conditions
- 4 tables
- 1 alias
- 4 joins
- 2 contexts
- 0 hierarchies

[Link to documentation of UNV version of PROBAN universe \(PDF\)](#)

# Main BI4 Core Reports

BI4 core folder: [522 - Proban](#)



[Link to UpToDate documentation of universes \(from 360 eyes\)](#)

[Link to Knowledge Transfer documents for PROBAN](#)

**\*\*\* This application is in the list of eRoom databases to be migrated to SQLServer 2008 \*\*\*** [see details ...](#)