

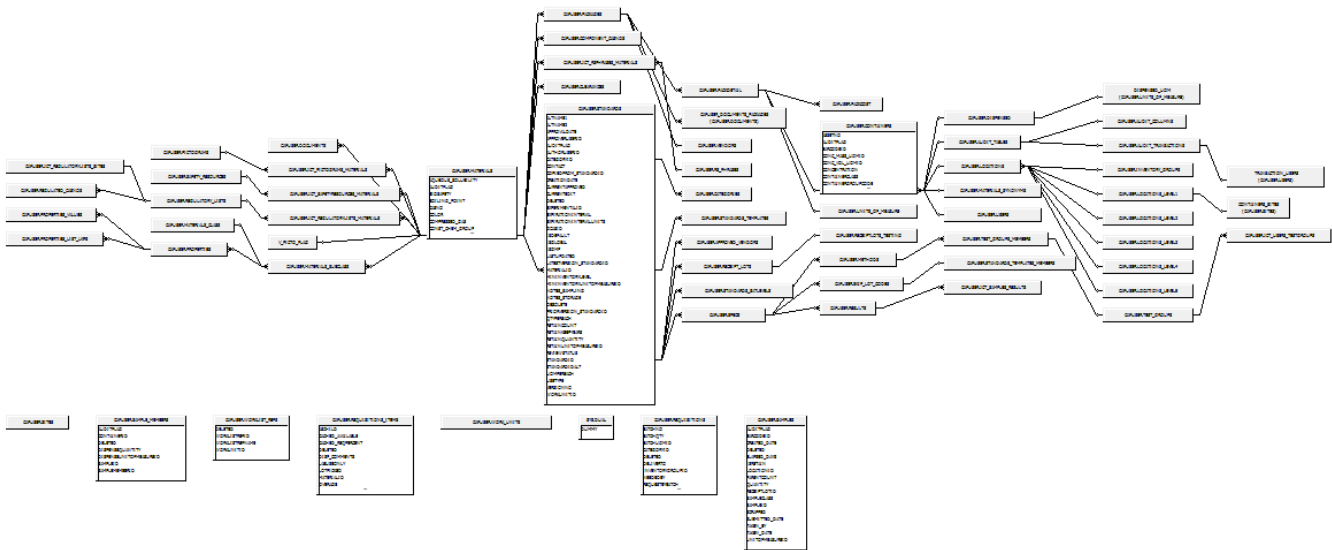
# zzz CISPRO

\*\*\* Latest refresh on Webl report using this universe by end users has been done in 2016-04-05 \*\*\*

- Overview
- Database Diagram
- Universe Documentation
  - CISPRO.UNV
- Main BI4 Core Reports
  - BI4 core folder: 516 - Cispro
- Useful links

## Overview

## Database Diagram



## Universe Documentation

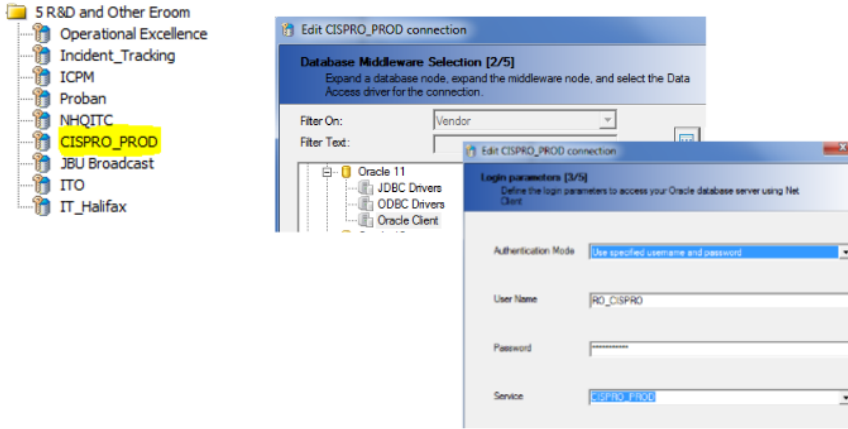
Universe connection changed on 03/2017 :

HOST = [ux12db.ibm.be.solvay.com](http://ux12db.ibm.be.solvay.com) (instead of [UX2DB.ibm.be.solvay.com](http://UX2DB.ibm.be.solvay.com))

PORT = 1533 (instead of 1528)

DATABASE = CISPROP (instead of CISPRO\_PRD)

## Oracle connection and user



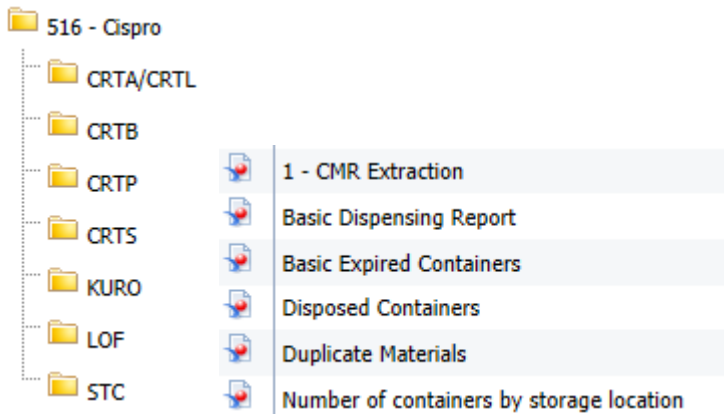
## CISPRO.UNV

34 classes  
415 objects  
0 conditions  
63 tables  
4 alias  
58 joins  
0 contexts  
1 hierarchies

[Link to documentation of UNV version of CISPRO universe \(PDF\)](#)

## Main BI4 Core Reports

### BI4 core folder: 516 - Cispro



## Useful links

[Link to UpToDate documentation of universes \(from 360 eyes\)](#)

[Link to Knowledge Transfer documents for CISPRO](#)