

Month-End Revaluation of EMEA Affiliates

Tasks to be completed when documenting an operation (from creation to publication)

1. Enter the **Title of the operation / page**

2. Add the following Labels:

- Scope of applicability: ww, country_accounting
- Country or group of countries (if applicable): belux, china, france, italy, lam, nam,uk_ie, bulgaria, dach, netherlands, iberia, poland, latvia, australia, india, japan, south_korea, thailand, singapore, new_zealand, emea_transversal, apac_transversal
- Unit and Domain according to the [List of labels to be used in the Finance Service Line space](#)
 - E.g. 1: WW Operation in Financial Accounting under domain "Central Finance Processes & Compliance":
 - Labels to be used: **ww, financial_accounting, central_fin_proc_compliance**
 - E.g. 2: France Operation in Financial Accounting:
 - Labels to be used: **country_accounting, france, financial_accounting**
(for country operations, the Domain is always country_accounting)

3. Fill in all fields as described above

4. Name the title of each section using OPD methodology naming convention - **Infinitive verb without the "to", mainly action verb...something) -" I do something..."**

5. Once the description of the operation is completed, ensure it is approved and published by launching the [SBS-Finance approval workflow](#)

Domain:

Responsibility area:

Table of contents

- [Tasks to be completed when documenting an operation \(from creation to publication\)](#)
- [1. Enter the Title of the operation / page](#)
- [2. Add the following Labels:](#)
 - [Scope of applicability: ww, country_accounting](#)
 - [Country or group of countries \(if applicable\): belux, china, france, italy, lam, nam,uk_ie, bulgaria, dach, netherlands, iberia, poland, latvia, australia, india, japan, south_korea, thailand, singapore, new_zealand, emea_transversal, apac_transversal](#)
 - [Unit and Domain according to the List of labels to be used in the Finance Service Line space](#)
- [3. Fill in all fields as described above](#)
- [4. Name the title of each section using OPD methodology naming convention - Infinitive verb without the "to", mainly action verb...something\) -" I do something..."](#)
- [5. Once the description of the operation is completed, ensure it is approved and published by launching the SBS-Finance approval workflow](#)
- [Table of contents](#)
- [1. Objective and Scope](#)
 - [1.1. Objective of this Operation](#)
 - [1.2. Scope](#)
- [2. Definitions](#)
- [3. Tasks description](#)
 - [3.1. I run the revaluation for PF2 EMEA entities](#)
 - [3.2. I run the revaluation for WP2 EMEA entities](#)
 - [3.3. Inform teams that revaluation process is finished for both systems](#)

Scope

EMEA

ERP

PF2

WP2

Frequency



Month

References

Forms

Attachments

<< Month-End Revaluation of EMEA
Affiliates >>

1. Objective and Scope

1.1. Objective of this Operation

The purpose of this process is to revalue/remeasure at the month end, the monetary items posted in foreign currency in the functional currency of the entity.

This process has to be performed during the monthly closing in D+1 on the EMEA entities

1.2. Scope

EMEA entities in PF2 and WP2

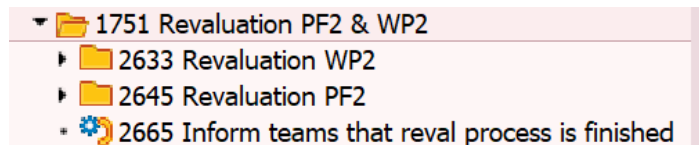
2. Definitions

See [Finance Glossary](#):

- ...

3. Tasks description

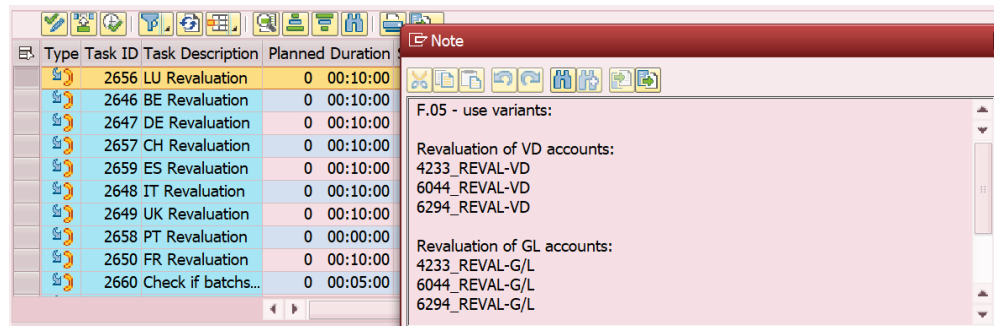
The revaluation process should be performed after the last IBA run in D+1



3.1. I run the revaluation for PF2 EMEA entities

3.1.1. Run the revaluation variants by country

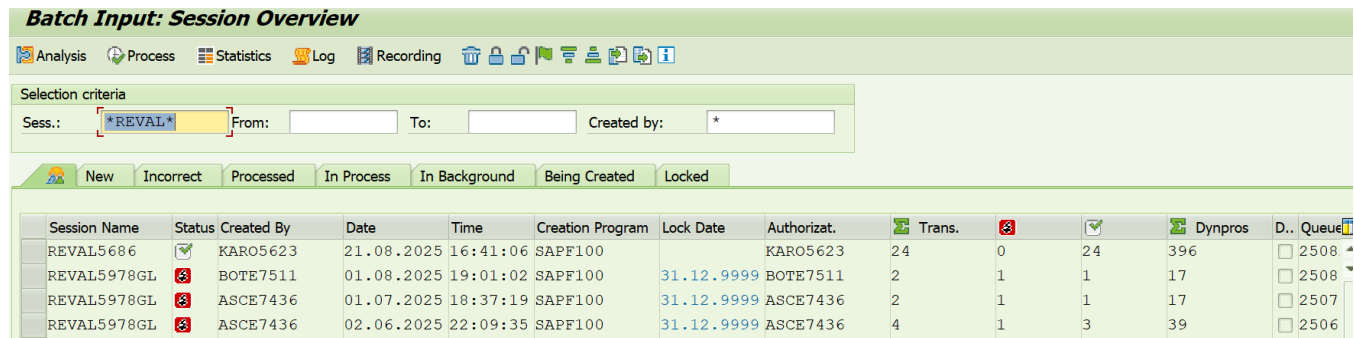
We select each job by country and run on the transaction F.05 in PF2 the different variants indicated on the notes:



3.1.2. Validate the batches on the transaction SM35

After run the variants on the previous steps we need to verify if all the batches were processed or we need to process them manually

On the SM35 we select the Sess: "Reval" and will appear our batches created by our user:



Then we need to select "process" and then select the option: "display errors only":

Batch Input: Session Overview

Analysis Process Statistics Log Recording

Selection criteria
Sess.: *REVAL* From: To: Created by: *

New Incorrect Processed In Process In Background Being Created Locked

Session Name	Status	Created By	Date	Time	Creation Program	Lock Date	Authorizat.	Trans
REVAL5686	✓	KARO5623	21.08.2025	16:41:06	SAPF100		KARO5623	24
REVAL5978GL	✗	BOTE7511	01.08.2025	19:01:02	SAPF100	31.12.9999	BOTE7511	2
REVAL5978GL	✗	ASCE7436	01.07.2025	18:37:19	SAPF100	31.12.9999	ASCE7436	2

After that, the postings of the batch are processed.

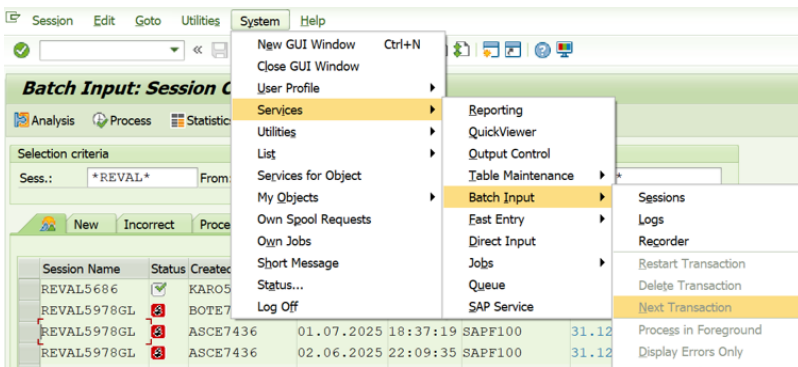
However, we can have some possible errors while process the batch:

a) If in the the account appears the text: " <245000000REVENU> - we need to replace the text by "754000000"

b) If in the the account appears the text: " <245000000EXPEN. > - we need to replace the text by "654000000"

Note: The other counterpart of the posting should not be changed, just the errors on the 1st part of the posting as the examples above.

c) If the account is blocked we select inside the batch the option: systemServicesBatch InputNext Transaction:



After process all the batch we select the batch and the locker with lock date: 31.12.9999 as the example below:

Batch Input: Session Overview

Analysis Process Statistics Log Recording

Selection criteria
Sess.: *REVAL* From: To: Created by: *

New Incorrect Processed In Process In Background Being Created Locked

Session Name	Status	Created By	Date	Time	Creation Program	Lock Date	Authorizat.
REVAL5978GL	✗	BOTE7511	01.08.2025	19:01:02	SAPF100	31.12.9999	BOTE7511
REVAL5978GL	✗	ASCE7436	01.07.2025	18:37:19	SAPF100	31.12.9999	ASCE7436
REVAL5978GL	✗	ASCE7436	02.06.2025	22:09:35	SAPF100	31.12.9999	ASCE7436

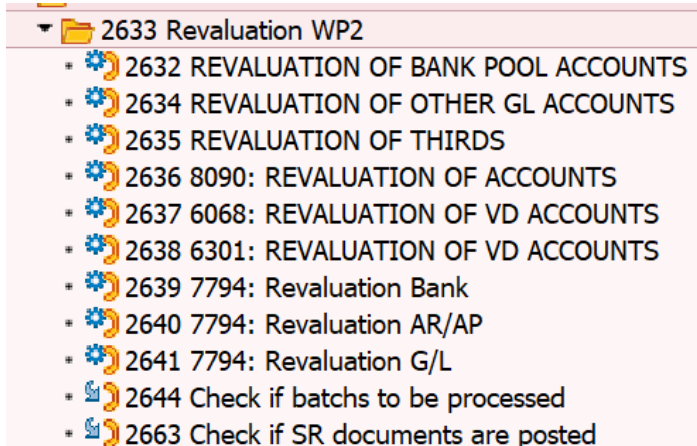
If you make a mistake correcting the batch, use /bend and press enter to go back to the SM35 screen:



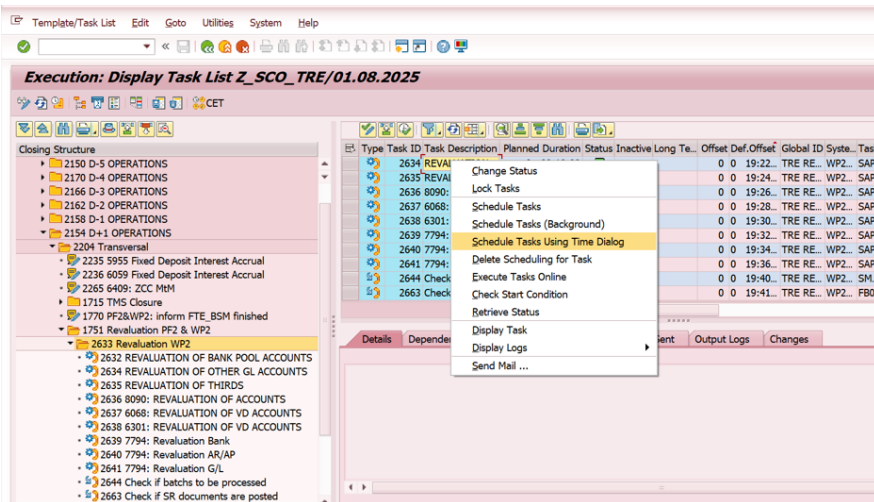
In the end we check if SR documents are posted on the different entities between: last day of the month and the 1st day of the next month.

3.2. I run the revaluation for WP2 EMEA entities

3.2.1. Run the revaluation variants by country



Select each remote job in the option: "Schedule Tasks Using Time Dialog" and each batch will be processed automatically:



3.2.2. Validate the batches on the transaction SM35

After run the variants on the previous steps we need to verify if all the batches were processed or we need to process them manually

On the SM35 we select the Sess: "Reval" and will appear our batches created by our user:

Batch Input: Session Overview

Analysis Process Statistics Log Recording

Selection criteria
 Sess.: *REVAL* From: To: Created by: *

New Incorrect Processed In Process In Background Being Created Locked

Session Name	Status	Created By	Date	Time	Creation Program	Lock Date	Authorizat.	Trans.			Dynpros
REVAL6416GLL	✓	SOUZ7472	05.08.2025	15:37:48	SAPF100		SOUZ7472	2	0	2	14
REVAL6416GLL	✓	SOUZ7472	04.08.2025	22:37:15	SAPF100		SOUZ7472	4	0	4	26
REVAL7722VL	✓	POZZ9151	04.08.2025	22:10:08	SAPF100		POZZ9151	10	0	10	90
REVAL7722CGL	✓	POZZ9151	04.08.2025	22:05:32	SAPF100		POZZ9151	8	0	8	62
REVALLC7725	✓	BATCHFCC	04.08.2025	21:58:59	SAPF100		BATCHFCC	36	0	36	284
REVALGR7722	✓	POZZ9151	04.08.2025	21:54:48	SAPF100		POZZ9151	9	0	9	82
REVAL6409GLL	✓	SOUZ7472	04.08.2025	21:40:34	SAPF100		SOUZ7472	6	0	6	40
REVALGR6409	✓	SOUZ7472	04.08.2025	21:37:13	SAPF100		SOUZ7472	2	0	2	20
REVAL6416GLL	✗	SOUZ7472	03.07.2025	01:11:21	SAPF100	31.12.9999	SOUZ7472	2	0	0	10

Then we need to select "process" and then select the option: "display errors only":

Batch Input: Session Overview

Analysis **Process** Statistics Log Recording

Selection criteria
 Sess.: *REVAL* From: To: Created by: *

New Incorrect Processed **In Process** In Background Being Created Locked

Session Name	Status	Created By	Date	Time	Creation Program	Lock Date	Authorizat.	Trans.			Dynpros
REVAL6416GLL	✓	SOUZ7472	05.08.2025	15:37:48	SAPF100		SOUZ7472	2	0	2	14
REVAL6416GLL	✓	SOUZ7472	04.08.2025	22:37:15	SAPF100		SOUZ7472	4	0	4	26
REVAL7722VL	✓	POZZ9151	04.08.2025	22:10:08	SAPF100		POZZ9151	10	0	10	90
REVAL7722CGL	✓	POZZ9151	04.08.2025	22:05:32	SAPF100		POZZ9151	8	0	8	62
REVALLC7725	✓	BATCHFCC	04.08.2025	21:58:59	SAPF100		BATCHFCC	36	0	36	284

After that, the postings of the batch are processed.

However, we can have some possible errors while process the batch:

1) Reval Bank accounts (accounts that starts with 5*)

Example:

- a) If in the the account appears the text: " <51000914EXPEN. > - we need to replace the text by "98622200"
- b) If in the the account appears the text: " <51000914REVENU.> - we need to replace the text by "98622210"

1) Reval Other accounts (all the accounts except the 5*)

Example:

- a) If in the the account appears the text: " <21900200EXPEN. > - we need to replace the text by "98622000"
- b) If in the the account appears the text: " <21900200REVENU.> - we need to replace the text by "98622004"
- c) Accounts that doesn't find (example 40100129) replace with account 40100109
- d) Transaction type error: SelectF32

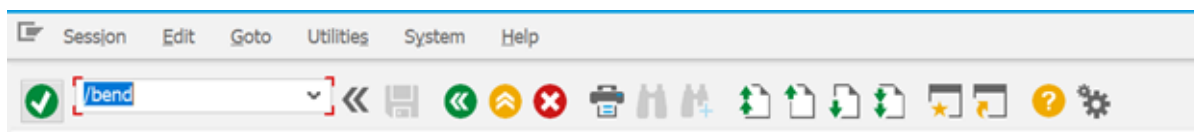
e) Missing cost-center:

Reval 8485 Cost Center: 8485-8390

Reval 3919 Cost center: 3919-8390

Reval 6771 Cost center: 6771-4700


If you make a mistake correcting the batch, use /bend and press enter to go back to the SM35 screen:



In the end we check if SR documents are posted on the different entities between: last day of the month and the 1st day of the next month.

3.3. Inform teams that revaluation process is finished for both systems

After we validate that all batches were processed in both systems and all the errors were corrected we can process the following remote job:

•  2665 Inform teams that reval process is finished

The task will send the automatic email to the respective teams to inform that the revaluation of EMEA entities is completed:

WP2 / PF2 Revaluation process completed Inbox x



Ana Rita BOTELHO CHAVES GODINHO

Fri, Aug 1, 6:50 PM



to gbs_finance_acc_platform_frbelu, gbs_finance_acc_platform_it-other-emea, gbs_finance_financial_acc_treasury-accounting, gbs_finance_financial_acc_interco, gbs_finance_country_acc_befralu, gbs_fina

DEAR ALL

THE REVALUATION PROCESS FOR WP2 AND PF2 HAS BEEN COMPLETED FOR ALL EMEA COMPANIES WITHIN OUR SCOPE.

BEST REGARDS.

SU TREASURY ACCOUNTING AND REPORTING TEAM

End of document.