

# KEFC - CO-PA Import File

**STEP 1**

Open transaction KEFC

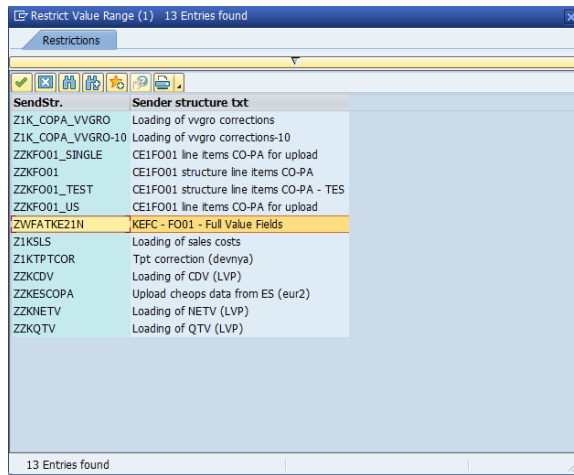
**STEP 2**

Depending of the company code choose variant in line with the controlling area:

- Z001
- Z006
- Z010
- Z013
- Z025
- Z026
- Z028
- \*SPS\* ( for PF1)

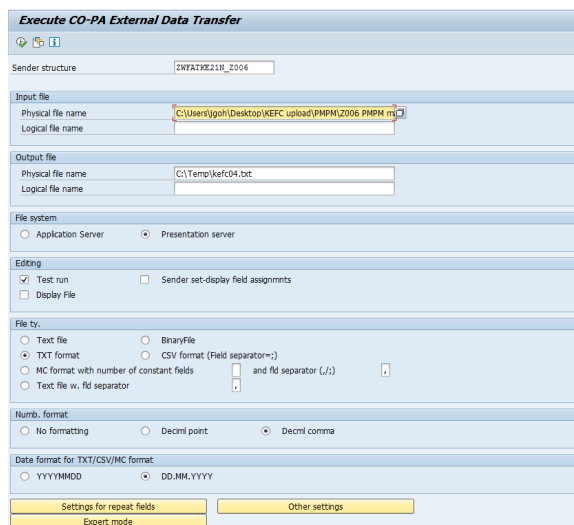
Variant name	Short Description
KOE01	
LB01	
Z001	Z001
Z006	Z006
Z010	Z010
Z013	Z013
Z025	Z025
Z026	Z026
Z028	Z028
ZZQ	ZZQ

PF1



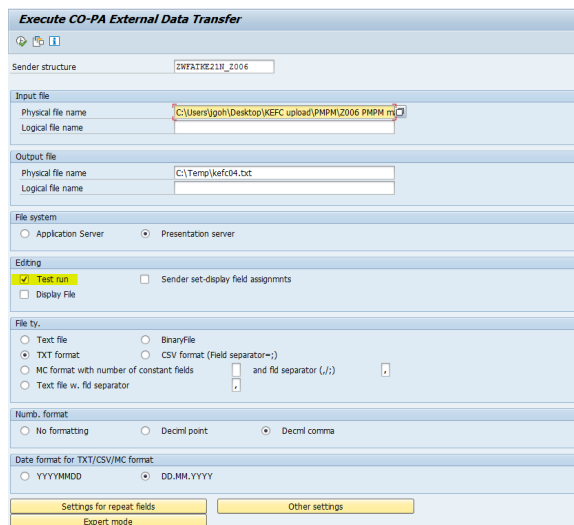
**STEP 3**

Choose the path where the txt file is located.



**STEP 4**

Run in test mode



**STEP 5**

If the transaction didn't retrieve any error upload go back and run again without test run.

### Execute CO-PA External Data Transfer



Execute CO-PA External Data Transfer



Sender program: ZWFATKE21N\_2006  
File name: D:\Users\PT63035882\Desktop\zfr3-8333.txt

No. records:	52	Rec.leng.:	3.101
--------------	----	------------	-------

Number of receiver records:	52
-----------------------------	----

Number of correct receiver records:	52
-------------------------------------	----

Number of incorrect receiver records:	0
---------------------------------------	---

Test run data transfer: data not updated