

CNV-1113 Portfolio Bucket Hierarchy

| | |
|---------------------|--|
| Status | Approved |
| Owner | KOHN-ext, Jacob |
| Stakeholders | NADAR-ext, Parvati UPADHYAY-ext, Anjali WELENSKY-ext, Dave |

Purpose

The purpose of this document is to define the conversion approach to create Portfolio Bucket Hierarchy in S/4 HANA.

Bucket: The overall structure of the Portfolio is reflected in a hierarchy of Buckets. Each Portfolio Item is assigned to a Bucket within the Portfolio.

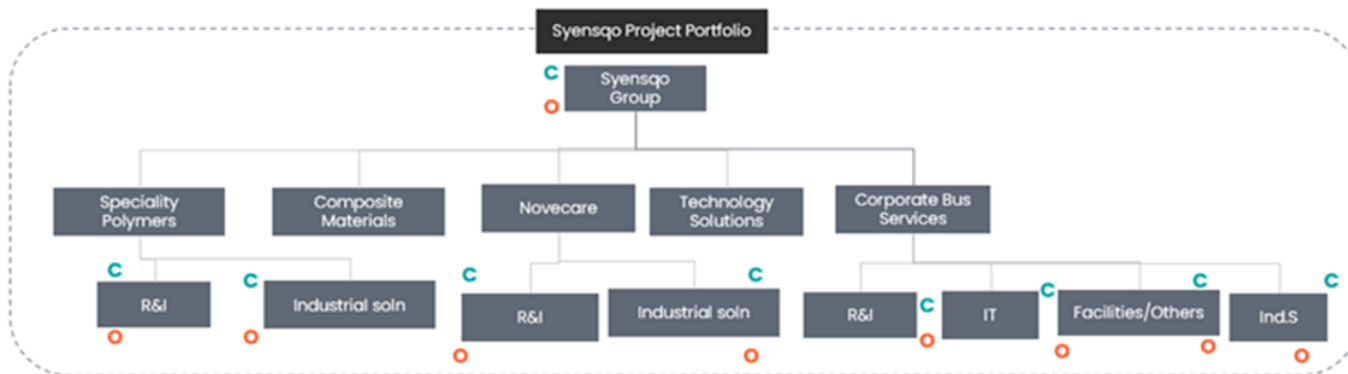
Syensqo utilizes Portfolio Buckets to represent the GBUs and functions for budget management purposes.

Conversion Scope

The scope of this document covers the approach for uploading active Portfolio Bucket Hierarchy from Legacy Source Systems into S/4HANA following the Portfolio Bucket Hierarchy Master Data Design Standard.

This is a completely new object for Syensqo with the data being sourced using DCT (Data Collection Template).

Syensqo utilizes Portfolio Buckets to represent the budget management structure as GBUs and functions.



The above is an illustration only.

- Level 1 Bucket represents Syensqo group,
- Level 2 Represents GBU and
- Level 3 represents Functions within the GBUs.

This is a completely new object for Syensqo with the data being sourced using DCT (Data Collection Template).

List of source systems and approximate number of records

| Source | Scope | Source Approx No. of Records | Target System | Target Approx No. of Records |
|--------|-------------|------------------------------|---------------|------------------------------|
| DCT | All Records | 50 | S/4HANA | 50 |

Migration load to be done to ROW instance with replication to other S/4 Hana instances done by batch job as per business process. To be included in cut-over strategy document.

Additional Information

Multi-language Requirement

PPM Portfolio will be maintained in English only.

Document Management

Not Applicable

Legal Requirement

Not Applicable

Special Requirements

Not Applicable

Target Design

The technical design of the target for this conversion approach.

| Table | Field | Data Element | Field Description | Data Type | Length | Requirement |
|-------------------|---------------------|-------------------------|---------------------------------|-----------|--------|-------------|
| /RPM /BUCKET_D | EXTERNAL_ID | /RPM/TV_EXTID | Id | CHAR | 24 | Mandatory |
| CGPL_TEXT | NAME | CGPL_TEXT1 | Bucket Name | CHAR | 40 | Mandatory |
| /RPM /BUCKET_D | RELEASE_STAT US | /RPM/TV_RELEASE_STATUS | Status | CHAR | 5 | Mandatory |
| /RPM /BUCKET_D | PORTFOLIO_ID | /RPM/TV_EXTID | Portfolio Id | CHAR | 24 | Mandatory |
| /RPM /BUCKET_D | PARENT_ID | /RPM/TV_EXTID | Parent Bucked Id | CHAR | 24 | Mandatory |
| /RPM /BUCKET_D | CURRENCY | /RPM/TV_CURRENCY | Currency | CUKY | 5 | Mandatory |
| /RPM /BUCKET_D | PERIOD_TYPE | /RPM/TV_PERIOD_TYPE | Fin Period Breakdown | NUMC | 2 | Mandatory |
| /RPM /BUCKET_D | UNIT | /RPM/TV_UNIT | Capacity Unit | UNIT | 3 | Mandatory |
| /RPM /BUCKET_D | CAP_PERIOD_TY PE | /RPM/TV_CAP_PERIOD_TYPE | Cap Period Breakdown | NUMC | 2 | Mandatory |
| /RPM /BUCKET_D | BEGDA_FIN | /RPM/TV_FINPLAN_BEGDA | Financial Planning Start | DATS | 8 | Mandatory |
| /RPM /BUCKET_D | ENDDA_FIN | /RPM/TV_FINPLAN_ENDDA | Financial Planning Finish | DATS | 8 | Mandatory |
| /RPM /BUCKET_D | BEGDA_DEM | /RPM/TV_DEMAND_BEGDA | Capacity Planning Start | DATS | 8 | Mandatory |
| /RPM /BUCKET_D | ENDDA_DEM | /RPM/TV_DEMAND_ENDDA | Capacity Planning Finish | DATS | 8 | Mandatory |
| /RPM /BUCKET_D | BEGDA_CO | /RPM/TV_COPLAN_BEGDA | Current Transfer Start | DATS | 8 | Mandatory |
| /RPM /BUCKET_D | ENDDA_CO | /RPM/TV_COPLAN_ENDDA | Current Transfer Finish | DATS | 8 | Mandatory |
| /RPM /BUCKET_D | ZAPPR | HROBJID | Prioritization Approver | NUMC | 8 | Mandatory |
| /RPM /BUCKET_D | ZAPPRNAME | STEXT | Prioritization Approver Name | CHAR | 40 | Mandatory |
| /RPM /BUCKET_D | ZPROFITCENTRE | PRCTR | Profit centre | CHAR | 10 | Mandatory |

| | | | | | | |
|-------------------|-----------|--|----------|------|---|-------------|
| /RPM /BUCKET_D | ZFUNCTION | Technical detail for the data element is currently outstanding | Function | NUMC | 2 | Conditional |
|-------------------|-----------|--|----------|------|---|-------------|

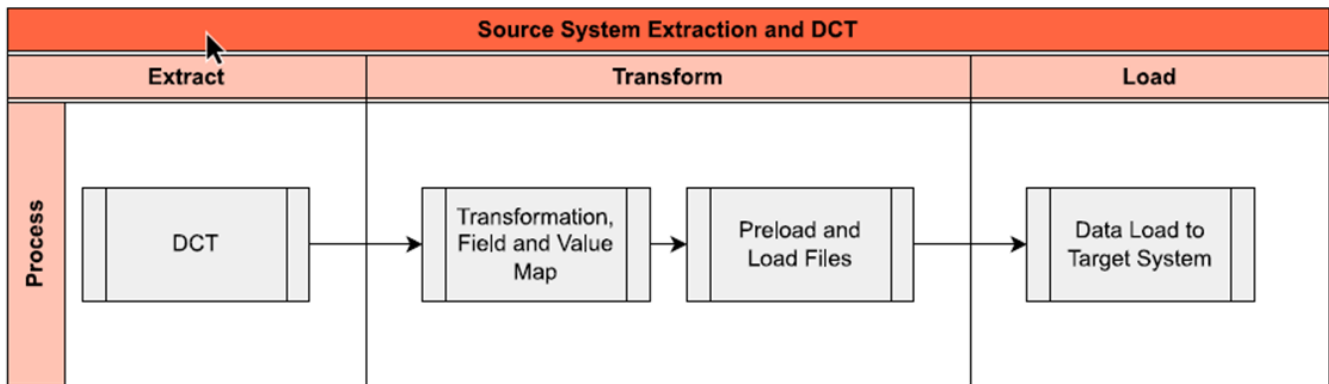
Data Cleansing

Not applicable, as data object Project Bucket Hierarchy does not exist in legacy system and will be collected specifically for data migration.

| ID | Criticality | Error Message/Report Description | Rule | Output | Source System |
|----|-------------|----------------------------------|------|--------|---------------|
|----|-------------|----------------------------------|------|--------|---------------|

Conversion Process

The high-level process is represented by the diagram below:



Data Privacy and Sensitivity

Not Applicable.

Extraction

Extract data from a source into Syniti Migrate.

1. The data does not exist (or cannot be converted from its current state). The data is manually collected by the business directly in Syniti Migrate. This is to be conducted using DCT (Data Collection Template) in Syniti Migrate

The agreed Relevancy criteria is applied to the extracted records to identify the records that are applicable for the Target loads

Extraction Run Sheet

| Req # | Requirement Description | Team Responsible |
|-------|---|------------------|
| 1 | Ensure DCT is collected for Buckets | Data Team |
| 2 | Perform preliminary completeness check | Data Team |
| 3 | Raise issues as defects if Req # 1 to 2 are not met | Data Team |
| 4 | Repeat Req # 1 to 3 if required | Data Team |

Selection Screen

Not Applicable

| Selection Ref Screen | Parameter Name | Selection Type | Requirement | Value to be entered/set |
|----------------------|----------------|----------------|-------------|-------------------------|
| | None | | | |

Data Collection Template (DCT)

Target Ready Data Collection Template will be created for Portfolio Bucket Hierarchy data with exception of some fields which require transformation as mentioned in the transformation rule.

In conjunction with DCT business user will be provided with New Profit center and Position mapping for reference.

Bucket Hierarchy DCT Rules

| Field Name | Field Description | Rule |
|----------------|-------------------------|---|
| EXTERN_AL_ID | Id | Manually assigned starts with letter B and follows 5 digit running number - example B-00001, B-00002.... It is a Required Field: Preload Check to be done to confirm that this is field in the Data Collection Template |
| NAME | Name of Bucket | Buckets in the standard Portfolio are to be aligned with the areas of Budget Accountability and are to be named accordingly. A prefix of Parent 'GBU' is required at L3 to avoid any confusion with other hierarchies. It is a Required Field: Preload Check to be done to confirm that this is field in the Data Collection Template |
| PARENT_ID | Parent ID | It is mandatory to nominate a Parent Bucket on creation of each Bucket, except for the L1 Bucket which is assigned to the Portfolio directly. This hierarchical assignment of Buckets defines the Portfolio structure. It is a Conditional field: Preload Check to be done to confirm that this is field in the Data Collection Template for the Condition Described below |
| ZAPPR | Prioritization Approver | Position ID of GBU President or delegate to approve the Prioritization for each Function It is a Required Field: Preload Check to be done to confirm that this is field in the Data Collection Template |
| ZPROFIT CENTRE | Profit centre | Generic Profit centre of GBU which defines the bucket represents or belongs to the particular GBU. It is a Required Field: Preload Check to be done to confirm that this is field in the Data Collection Template |
| ZFUNCTION | Function | Function at L3 Bucket used to group buckets of same function across all GBUs. Required at L3 Bucket, Blank at L1 and L2 buckets It is a Conditional field: Preload Check to be done to confirm that this is field in the Data Collection Template for the Condition Described below |

Extraction Dependencies

No Dependencies for Extract

| Item # | Step Description | Team Responsible |
|--------|------------------|------------------|
| | None | |

Transformation

The Target fields are mapped to the applicable Legacy field that will be its source, this is a 3-way activity involving the Business, Functional team and Data team. This identifies the transformation activity required to allow Syniti Migrate to make the data Target ready:

1. Perform value mapping and data transformation rules.
 - a. Legacy values are mapped to the to-be values (this could include a default value)
 - b. Values are transformed according to the rules defined in Syniti Migrate
2. Prepare target-ready data in the structure and format that is required for loading via prescribed Load Tool. This step also produces the load data ready for business to perform Pre-load Data Validation

Transformation Run Sheet

| Item # | Step Description | Team Responsible |
|--------|--|------------------|
| 1 | Obtain DCT Sign-off from Business | Data Team |
| 2 | Execute and Load and perform Transformation | Data Team |
| 3 | Monitor the transformation progress and ensure performance and completion is within allowed timeframe | Data team |
| 4 | Review and Validate Error and Preload Reports | Data Team |
| 5 | Generate data load count. | Data team |
| 6 | Generate Load Files | Data Team |
| 7 | Log errors as defects, if any and address resolutions. Close defects. | Data team |
| 8 | Re-transform and re-validate the Pre-load reports if necessary. | Data team |
| 9 | Validate the transformed file as part of pre-load validation, raise data defects or provide the pre-load sign-off. | Business |
| 10 | Analyse and resolve any pre-load defects logged by business. | Data team |
| 11 | Repeat steps 7 to 10 if necessary | Data team |
| 12 | Proceed to pre-load validations | Data team |

Transformation Rules

Not all fields from DCT to be mapped to target fields.

| Rule # | Source system | Source Table | Source Field | Source Description | Target System | Target Table | Target Field | Target Description | Transformation Logic |
|--------|---------------|--------------|-----------------|-------------------------|---------------|----------------|------------------|------------------------------|---|
| 1 | DCT | | EXTERNAL_ID | Id | S/4 Hana | /RPM /BUCKET_D | EXTERNAL_ID | Id | Copy from source to target system |
| 2 | DCT | | NAME | Name of Bucket | S/4 Hana | /RPM /BUCKET_D | NAME | Bucket Name | Copy from source to target system |
| 3 | DCT | | RELEASE_S TATUS | Status | S/4 Hana | /RPM /BUCKET_D | RELEASE_ST ATUS | Status | Default to "0002"(Active) |
| 4 | DCT | | PORTFOLIO _ID | Portfolio Id | S/4 Hana | /RPM /BUCKET_D | PORTFOLIO_ ID | Portfolio Id | Default to Syensqo |
| 5 | DCT | | Parent_ID | Parent Bucked Id | S/4 Hana | /RPM /BUCKET_D | Parent_ID | Parent Bucked Id | Copy from source to target system |
| 6 | | | | | S/4 Hana | /RPM /BUCKET_D | CURRENCY | Currency | Default to (EUR) |
| 7 | | | | | S/4 Hana | /RPM /BUCKET_D | PERIOD_TYPE | Fin Period Breakdown | Default to "12"(Annually) From /RPM /PERIOD_TYPE |
| 8 | | | | | S/4 Hana | /RPM /BUCKET_D | UNIT | Capacity Unit | Default to (Day) From T006 |
| 9 | | | | | S/4 Hana | /RPM /BUCKET_D | CAP_PERIOD _TYPE | Cap Period Breakdown | Default to "12"(Annually) From /RPM /PERIOD_TYPE |
| 10 | | | | | S/4 Hana | /RPM /BUCKET_D | BEGDA_FIN | Financial Planning Start | Default to "20251001" (YYYYMMDD) |
| 11 | | | | | S/4 Hana | /RPM /BUCKET_D | ENDDA_FIN | Financial Planning Finish | Default to "20390930" (YYYYMMDD) |
| 12 | | | | | S/4 Hana | /RPM /BUCKET_D | BEGDA_DEM | Capacity Planning Start | Default to "20251001" (YYYYMMDD) |
| 13 | | | | | S/4 Hana | /RPM /BUCKET_D | ENDDA_DEM | Capacity Planning Finish | Default to "20390930" (YYYYMMDD) |
| 14 | | | | | S/4 Hana | /RPM /BUCKET_D | BEGDA_CO | Current Transfer Start | Default to "20191001" (YYYYMMDD) |
| 15 | | | | | S/4 Hana | /RPM /BUCKET_D | ENDDA_CO | Current Transfer Finish | Default to "20390930" (YYYYMMDD) |
| 18 | DCT | | ZAPPR | Prioritization Approver | S/4 Hana | /RPM /BUCKET_D | ZAPPR | Prioritization Approver | Copy from source to target system |
| 19 | | | | | S/4 Hana | /RPM /BUCKET_D | ZAPPRNAME | Prioritization Approver Name | Transformation Mapping Position Description Select HRP1000-STEXT where HRP1000-OBJID=ZAPPR |

| | | | | | | | | | |
|----|-----|--|-------------------|---------------|----------|-------------------|-------------------|---------------|-----------------------------------|
| 20 | DCT | | ZPROFITCE NTRE | Profit centre | S/4 Hana | /RPM /BUCKET_D | ZPROFITCE NTRE | Profit centre | Copy from source to target system |
| 21 | DCT | | ZFUNCTION | Function | S/4 Hana | /RPM /BUCKET_D | ZFUNCTION | Function | Copy from source to target system |

List of Custom Target Reports for this object is maintained here: [Conversion Specification - Custom Reports Register](#).

The Standard template for the upload of Bucket Hierarchy to be used for the upload of Hierarchy into S/4 Hana: [Bucket Hierarchy Upload Template](#).

Transformation Mapping

| Mapping Table Name | Mapping Table Description |
|------------------------------|---|
| HRP1000 Position Description | Transformation Mapping Position Description |

Transformation Dependencies

List the steps that need to occur before transformation can commence

| Item # | Step Description | Team Responsible |
|--------|---|------------------|
| 1 | Profit centers has been created (CEPC) | |
| 2 | Position table HRP1000 has been maintained (HRP1000) | |
| 3 | Ensure all the fields that require value mapping, as stipulated. Mapping tables, have the correct values mapped and imported into tool. | Data Team |

Pre-Load Validation

Project Team

Completeness

| Task | Action |
|---------------------|--|
| Verify Record Count | SyWay I2M Data Team to verify that the total number of relevant records from the DCT is equal to the total number of records in the Preload and Load Sheets. |

Accuracy

| Task | Action |
|----------------------|--|
| Conversion Accuracy | SyWay I2M Data Team to verify that all fields below meet pass the checks: <ol style="list-style-type: none"> 1. Mandatory Fields 2. Field and Value Mapping Correctness 3. Null Checks 4. Text Length Checks |
| Review Error Reports | Review and correct the errors. Achieve a zero-error record count as much as possible. Raise defects for data remediated and requiring a correction in the source (DCT) data. |

Business

Completeness

| Task | Action |
|------|--------|
|------|--------|

| | |
|---------------------|--|
| Verify Record Count | Business Data Owner/s to verify that the total number of relevant records from the DCT is equal to the total number of records in the Preload and Load Sheets. |
|---------------------|--|

Accuracy

| Task | Action |
|---------------------|--|
| Conversion Accuracy | Business Data Owner/s to verify that all the data in the load table/file is accurate as per endorsed transformation/mapping rules (and signed-off DCT data). |

Load

The load process includes:

1. Execute the automated data load into target system using load tool or product the load file if the load must be done manually
2. Once the data is loaded to the target system, it will be extracted and prepared for Post Load Data Validation
3. Migration load to be done to ROW instance with replication to other S/4 Hana instances done by batch job as per business process. To be included in cut-over strategy document.

Load Run Sheet

| Item # | Step Description | Team Responsible |
|--------|--|---------------------|
| 1 | Load using transaction RPM_DX_BUCKET | SyWay I2M Data Team |
| 2 | Load 3 records for < > to validate if data is loaded successfully without errors | SyWay I2M Data Team |
| 3 | Load 3 records for < > to validate if data is loaded successfully without errors | SyWay I2M Data Team |
| 4 | Proceed with full load if steps 2 and 3 are validated | SyWay I2M Data Team |
| 5 | Validate few records loaded by accessing Portfolio Bucket Structure App | SyWay I2M Data Team |
| 6 | Generate post load report if step 5 is validated | SyWay I2M Data Team |

Load Phase and Dependencies

Configuration

| Item # | Configuration Item |
|--------|---|
| 1 | Override Default Global Settings (Master Switches 0002 Switched off - Portfolio & Bucket will have manual ID) |
| 2 | Define Currency Units |
| 3 | Define Period Types |
| 4 | Define Capacity Units |
| 5 | Configure Fields for Mass Import |

Conversion Objects

| Object # | Preceding Object Conversion Approach |
|----------|--------------------------------------|
| 1021 | Portfolio |
| 1073 | Profit Centre |

Error Handling

| Error Type | Error Description | Action Taken |
|--------------|---|------------------------------|
| Invalid Data | Invalid Portfolio | Validate DCT default content |
| Invalid Data | Invalid Bucket ID (Parent ID does not exist) | Correct upload data |
| Invalid Data | Bucket ID already exists (Bucket appears in list 2) | Correct upload data |

Post-Load Validation

Project Team

Completeness

| Task | Action |
|--------------|--|
| Verify Count | SyWay I2M Data Team to verify the record count created in target S/4 HANA by accessing post load reports or standard reports from S/4 HANA. |
| Verify Logs | Check if there is data that failed to load and perform the necessary actions (e.g. register as post load issue or attempt to load the record again, etc.). |

Accuracy

| Task | Action |
|---------------------|---|
| Conversion Accuracy | Verify that the Bucket Hierarchy in target S/4 HANA were loaded correctly via Standard Portfolio Bucket display and table /RV_BUCKET_DB |

Business

Completeness

| Task | Action |
|--------------|---|
| Verify Count | Extract structure from Bucket dashboard in S/4 Hana |


Accuracy

| Task | Action |
|-------------------------|---|
| Verify Bucket Structure | Extract structure from Bucket dashboard in S/4 Hana |

Key Assumptions

- Master Data Standard is up to date as on the date of documenting this conversion approach and data load.
- The Portfolio Bucket Hierarchy is in scope based on data design and any exception requested by business.

Authorization approach for the Portfolio Bucket Hierarchy is to be updated once finalized.

 PDM-631 - Jira project doesn't exist or you don't have permission to view it.

See also

Change log

| Version | Published | Changed By | Comment |
|------------------------|---------------------------|------------------------|---------|
| CURRENT (v. 30) | Jan 21, 2026 09:01 | KOHN-ext, Jacob | |
| v. 29 | Jan 20, 2026 16:16 | KOHN-ext, Jacob | |
| v. 28 | Jan 20, 2026 16:07 | KOHN-ext, Jacob | |
| v. 27 | Nov 27, 2025 14:20 | KOHN-ext, Jacob | |
| v. 26 | Nov 20, 2025 10:20 | KOHN-ext, Jacob | |
| v. 25 | Nov 14, 2025 13:25 | KOHN-ext, Jacob | |
| v. 24 | Nov 14, 2025 13:10 | KOHN-ext, Jacob | |
| v. 23 | Nov 14, 2025 09:26 | KOHN-ext, Jacob | |
| v. 22 | Nov 13, 2025 12:17 | KOHN-ext, Jacob | |
| v. 21 | Oct 09, 2025 08:02 | KOHN-ext, Jacob | |

[Go to Page History](#)