

CNV-1113 Portfolio Bucket Hierarchy

Status	Approved
Owner	KOHN-ext, Jacob
Stakeholders	NADAR-ext, Parvati UPADHYAY-ext, Anjali WELENSKY-ext, Dave

Purpose

The purpose of this document is to define the conversion approach to create Portfolio Bucket Hierarchy in S/4 HANA.

Bucket: The overall structure of the Portfolio is reflected in a hierarchy of Buckets. Each Portfolio Item is assigned to a Bucket within the Portfolio.

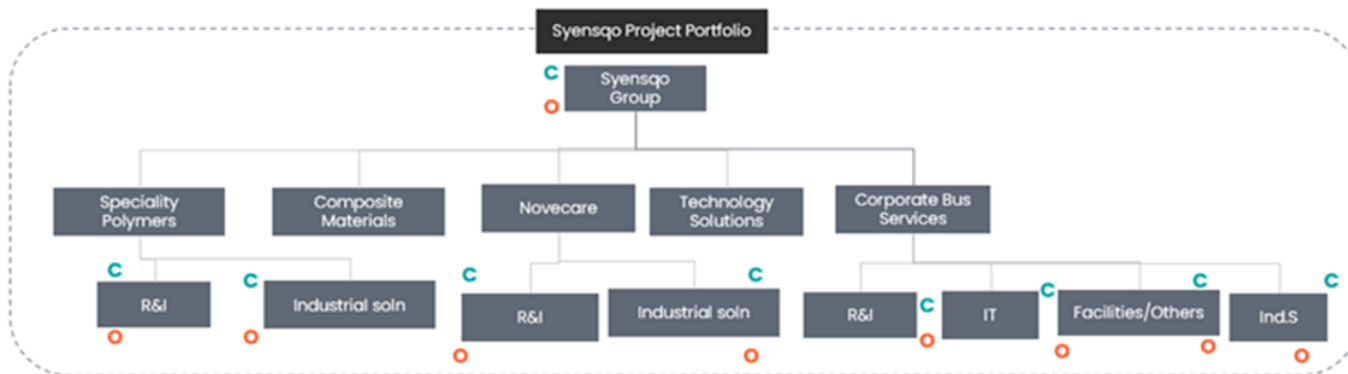
Syensqo utilizes Portfolio Buckets to represent the GBUs and functions for budget management purposes.

Conversion Scope

The scope of this document covers the approach for uploading active Portfolio Bucket Hierarchy from Legacy Source Systems into S/4HANA following the Portfolio Bucket Hierarchy Master Data Design Standard.

This is a completely new object for Syensqo with the data being sourced using DCT (Data Collection Template).

Syensqo utilizes Portfolio Buckets to represent the budget management structure as GBUs and functions.



The above is an illustration only.

- Level 1 Bucket represents Syensqo group,
- Level 2 Represents GBU and
- Level 3 represents Functions within the GBUs.

This is a completely new object for Syensqo with the data being sourced using DCT (Data Collection Template).

List of source systems and approximate number of records

Source	Scope	Source Approx No. of Records	Target System	Target Approx No. of Records
DCT	All Records	50	S/4HANA	50

Migration load to be done to ROW instance with replication to other S/4 Hana instances done by batch job as per business process. To be included in cut-over strategy document.

Additional Information

Multi-language Requirement

PPM Portfolio will be maintained in English only.

Document Management

Not Applicable

Legal Requirement

Not Applicable

Special Requirements

Not Applicable

Target Design

The technical design of the target for this conversion approach.

Table	Field	Data Element	Field Description	Data Type	Length	Requirement
/RPM /BUCKET_D	EXTERNAL_ID	/RPM/TV_EXTID	Id	CHAR	24	Mandatory
CGPL_TEXT	NAME	CGPL_TEXT1	Bucket Name	CHAR	40	Mandatory
/RPM /BUCKET_D	RELEASE_STAT US	/RPM/TV_RELEASE_STATUS	Status	CHAR	5	Mandatory
/RPM /BUCKET_D	PORTFOLIO_ID	/RPM/TV_EXTID	Portfolio Id	CHAR	24	Mandatory
/RPM /BUCKET_D	PARENT_ID	/RPM/TV_EXTID	Parent Bucked Id	CHAR	24	Mandatory
/RPM /BUCKET_D	CURRENCY	/RPM/TV_CURRENCY	Currency	CUKY	5	Mandatory
/RPM /BUCKET_D	PERIOD_TYPE	/RPM/TV_PERIOD_TYPE	Fin Period Breakdown	NUMC	2	Mandatory
/RPM /BUCKET_D	UNIT	/RPM/TV_UNIT	Capacity Unit	UNIT	3	Mandatory
/RPM /BUCKET_D	CAP_PERIOD_TY PE	/RPM/TV_CAP_PERIOD_TYPE	Cap Period Breakdown	NUMC	2	Mandatory
/RPM /BUCKET_D	BEGDA_FIN	/RPM/TV_FINPLAN_BEGDA	Financial Planning Start	DATS	8	Mandatory
/RPM /BUCKET_D	ENDDA_FIN	/RPM/TV_FINPLAN_ENDDA	Financial Planning Finish	DATS	8	Mandatory
/RPM /BUCKET_D	BEGDA_DEM	/RPM/TV_DEMAND_BEGDA	Capacity Planning Start	DATS	8	Mandatory
/RPM /BUCKET_D	ENDDA_DEM	/RPM/TV_DEMAND_ENDDA	Capacity Planning Finish	DATS	8	Mandatory
/RPM /BUCKET_D	BEGDA_CO	/RPM/TV_COPLAN_BEGDA	Current Transfer Start	DATS	8	Mandatory
/RPM /BUCKET_D	ENDDA_CO	/RPM/TV_COPLAN_ENDDA	Current Transfer Finish	DATS	8	Mandatory
/RPM /BUCKET_D	ZAPPR	HROBJID	Prioritization Approver	NUMC	8	Mandatory
/RPM /BUCKET_D	ZAPPRNAME	STEXT	Prioritization Approver Name	CHAR	40	Mandatory
/RPM /BUCKET_D	ZPROFITCENTRE	PRCTR	Profit centre	CHAR	10	Mandatory

/RPM /BUCKET_D	ZFUNCTION	Technical detail for the data element is currently outstanding	Function	NUMC	2	Conditional
-------------------	-----------	--	----------	------	---	-------------

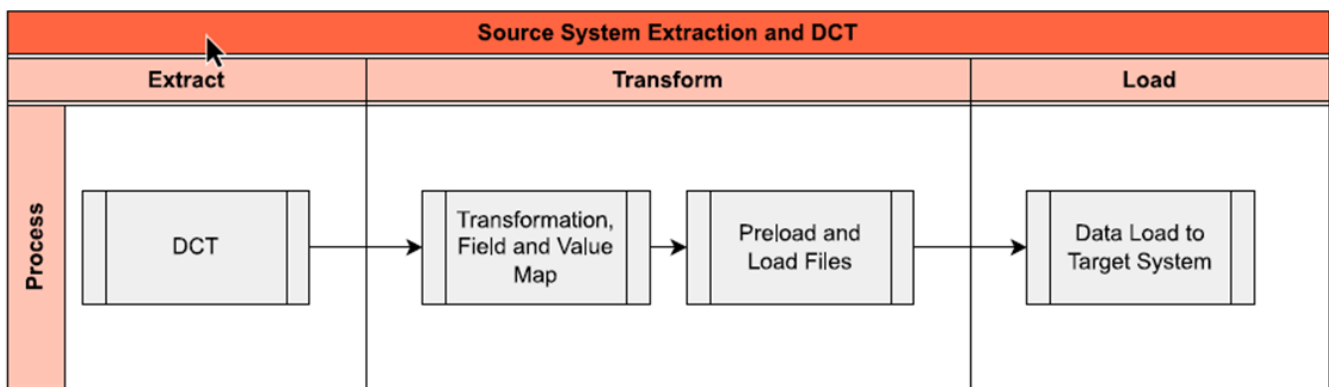
Data Cleansing

Not applicable, as data object Project Bucket Hierarchy does not exist in legacy system and will be collected specifically for data migration.

ID	Criticality	Error Message/Report Description	Rule	Output	Source System
----	-------------	----------------------------------	------	--------	---------------

Conversion Process

The high-level process is represented by the diagram below:



Data Privacy and Sensitivity

Not Applicable.

Extraction

Extract data from a source into Syniti Migrate.

1. The data does not exist (or cannot be converted from its current state). The data is manually collected by the business directly in Syniti Migrate. This is to be conducted using DCT (Data Collection Template) in Syniti Migrate

The agreed Relevancy criteria is applied to the extracted records to identify the records that are applicable for the Target loads

Extraction Run Sheet

Req #	Requirement Description	Team Responsible
1	Ensure DCT is collected for Buckets	Data Team
2	Perform preliminary completeness check	Data Team
3	Raise issues as defects if Req # 1 to 2 are not met	Data Team
4	Repeat Req # 1 to 3 if required	Data Team

Selection Screen

Not Applicable

Selection Ref Screen	Parameter Name	Selection Type	Requirement	Value to be entered/set
	None			

Data Collection Template (DCT)

Target Ready Data Collection Template will be created for Portfolio Bucket Hierarchy data with exception of some fields which require transformation as mentioned in the transformation rule.

In conjunction with DCT business user will be provided with New Profit center and Position mapping for reference.

Bucket Hierarchy DCT Rules

Field Name	Field Description	Rule
EXTERN_AL_ID	Id	Manually assigned starts with letter B and follows 5 digit running number - example B-00001, B-00002.... It is a Required Field: Preload Check to be done to confirm that this is field in the Data Collection Template
NAME	Name of Bucket	Buckets in the standard Portfolio are to be aligned with the areas of Budget Accountability and are to be named accordingly. A prefix of Parent 'GBU' is required at L3 to avoid any confusion with other hierarchies. It is a Required Field: Preload Check to be done to confirm that this is field in the Data Collection Template
PARENT_ID	Parent ID	It is mandatory to nominate a Parent Bucket on creation of each Bucket, except for the L1 Bucket which is assigned to the Portfolio directly. This hierarchical assignment of Buckets defines the Portfolio structure. It is a Conditional field: Preload Check to be done to confirm that this is field in the Data Collection Template for the Condition Described below
ZAPPR	Prioritization Approver	Position ID of GBU President or delegate to approve the Prioritization for each Function It is a Required Field: Preload Check to be done to confirm that this is field in the Data Collection Template
ZPROFIT CENTRE	Profit centre	Generic Profit centre of GBU which defines the bucket represents or belongs to the particular GBU. It is a Required Field: Preload Check to be done to confirm that this is field in the Data Collection Template
ZFUNCTION	Function	Function at L3 Bucket used to group buckets of same function across all GBUs. Required at L3 Bucket, Blank at L1 and L2 buckets It is a Conditional field: Preload Check to be done to confirm that this is field in the Data Collection Template for the Condition Described below

Extraction Dependencies

No Dependencies for Extract

Item #	Step Description	Team Responsible
	None	

Transformation

The Target fields are mapped to the applicable Legacy field that will be its source, this is a 3-way activity involving the Business, Functional team and Data team. This identifies the transformation activity required to allow Syniti Migrate to make the data Target ready:

1. Perform value mapping and data transformation rules.
 - a. Legacy values are mapped to the to-be values (this could include a default value)
 - b. Values are transformed according to the rules defined in Syniti Migrate
2. Prepare target-ready data in the structure and format that is required for loading via prescribed Load Tool. This step also produces the load data ready for business to perform Pre-load Data Validation

Transformation Run Sheet

Item #	Step Description	Team Responsible
1	Obtain DCT Sign-off from Business	Data Team
2	Execute and Load and perform Transformation	Data Team
3	Monitor the transformation progress and ensure performance and completion is within allowed timeframe	Data team
4	Review and Validate Error and Preload Reports	Data Team
5	Generate data load count.	Data team
6	Generate Load Files	Data Team
7	Log errors as defects, if any and address resolutions. Close defects.	Data team
8	Re-transform and re-validate the Pre-load reports if necessary.	Data team
9	Validate the transformed file as part of pre-load validation, raise data defects or provide the pre-load sign-off.	Business
10	Analyse and resolve any pre-load defects logged by business.	Data team
11	Repeat steps 7 to 10 if necessary	Data team
12	Proceed to pre-load validations	Data team

Transformation Rules

Not all fields from DCT to be mapped to target fields.

Rule #	Source system	Source Table	Source Field	Source Description	Target System	Target Table	Target Field	Target Description	Transformation Logic
1	DCT		EXTERNAL_ID	Id	S/4 Hana	/RPM /BUCKET_D	EXTERNAL_ID	Id	Copy from source to target system
2	DCT		NAME	Name of Bucket	S/4 Hana	/RPM /BUCKET_D	NAME	Bucket Name	Copy from source to target system
3	DCT		RELEASE_S TATUS	Status	S/4 Hana	/RPM /BUCKET_D	RELEASE_ST ATUS	Status	Default to "0002"(Active)
4	DCT		PORTFOLIO _ID	Portfolio Id	S/4 Hana	/RPM /BUCKET_D	PORTFOLIO_ ID	Portfolio Id	Default to Syensqo
5	DCT		Parent_ID	Parent Bucked Id	S/4 Hana	/RPM /BUCKET_D	Parent_ID	Parent Bucked Id	Copy from source to target system
6					S/4 Hana	/RPM /BUCKET_D	CURRENCY	Currency	Default to (EUR)
7					S/4 Hana	/RPM /BUCKET_D	PERIOD_TYPE	Fin Period Breakdown	Default to "12"(Annually) From /RPM /PERIOD_TYPE
8					S/4 Hana	/RPM /BUCKET_D	UNIT	Capacity Unit	Default to (Day) From T006
9					S/4 Hana	/RPM /BUCKET_D	CAP_PERIOD _TYPE	Cap Period Breakdown	Default to "12"(Annually) From /RPM /PERIOD_TYPE
10					S/4 Hana	/RPM /BUCKET_D	BEGDA_FIN	Financial Planning Start	Default to "20251001" (YYYYMMDD)
11					S/4 Hana	/RPM /BUCKET_D	ENDDA_FIN	Financial Planning Finish	Default to "20390930" (YYYYMMDD)
12					S/4 Hana	/RPM /BUCKET_D	BEGDA_DEM	Capacity Planning Start	Default to "20251001" (YYYYMMDD)
13					S/4 Hana	/RPM /BUCKET_D	ENDDA_DEM	Capacity Planning Finish	Default to "20390930" (YYYYMMDD)
14					S/4 Hana	/RPM /BUCKET_D	BEGDA_CO	Current Transfer Start	Default to "20191001" (YYYYMMDD)
15					S/4 Hana	/RPM /BUCKET_D	ENDDA_CO	Current Transfer Finish	Default to "20390930" (YYYYMMDD)
18	DCT		ZAPPR	Prioritization Approver	S/4 Hana	/RPM /BUCKET_D	ZAPPR	Prioritization Approver	Copy from source to target system
19					S/4 Hana	/RPM /BUCKET_D	ZAPPRNAME	Prioritization Approver Name	Transformation Mapping Position Description Select HRP1000-STEXT where HRP1000-OBJID=ZAPPR

20	DCT		ZPROFITCE NTRE	Profit centre	S/4 Hana	/RPM /BUCKET_D	ZPROFITCE NTRE	Profit centre	Copy from source to target system
21	DCT		ZFUNCTION	Function	S/4 Hana	/RPM /BUCKET_D	ZFUNCTION	Function	Copy from source to target system

List of Custom Target Reports for this object is maintained here: [Conversion Specification - Custom Reports Register](#).

The Standard template for the upload of Bucket Hierarchy to be used for the upload of Hierarchy into S/4 Hana: [Bucket Hierarchy Upload Template](#).

Transformation Mapping

Mapping Table Name	Mapping Table Description
HRP1000 Position Description	Transformation Mapping Position Description

Transformation Dependencies

List the steps that need to occur before transformation can commence

Item #	Step Description	Team Responsible
1	Profit centers has been created (CEPC)	
2	Position table HRP1000 has been maintained (HRP1000)	
3	Ensure all the fields that require value mapping, as stipulated. Mapping tables, have the correct values mapped and imported into tool.	Data Team

Pre-Load Validation

Project Team

Completeness

Task	Action
Verify Record Count	SyWay I2M Data Team to verify that the total number of relevant records from the DCT is equal to the total number of records in the Preload and Load Sheets.

Accuracy

Task	Action
Conversion Accuracy	SyWay I2M Data Team to verify that all fields below meet pass the checks: <ol style="list-style-type: none"> 1. Mandatory Fields 2. Field and Value Mapping Correctness 3. Null Checks 4. Text Length Checks
Review Error Reports	Review and correct the errors. Achieve a zero-error record count as much as possible. Raise defects for data remediated and requiring a correction in the source (DCT) data.

Business

Completeness

Task	Action
------	--------

Verify Record Count	Business Data Owner/s to verify that the total number of relevant records from the DCT is equal to the total number of records in the Preload and Load Sheets.
---------------------	--

Accuracy

Task	Action
Conversion Accuracy	Business Data Owner/s to verify that all the data in the load table/file is accurate as per endorsed transformation/mapping rules (and signed-off DCT data).

Load

The load process includes:

1. Execute the automated data load into target system using load tool or product the load file if the load must be done manually
2. Once the data is loaded to the target system, it will be extracted and prepared for Post Load Data Validation
3. Migration load to be done to ROW instance with replication to other S/4 Hana instances done by batch job as per business process. To be included in cut-over strategy document.

Load Run Sheet

Item #	Step Description	Team Responsible
1	Load using transaction RPM_DX_BUCKET	SyWay I2M Data Team
2	Load 3 records for < > to validate if data is loaded successfully without errors	SyWay I2M Data Team
3	Load 3 records for < > to validate if data is loaded successfully without errors	SyWay I2M Data Team
4	Proceed with full load if steps 2 and 3 are validated	SyWay I2M Data Team
5	Validate few records loaded by accessing Portfolio Bucket Structure App	SyWay I2M Data Team
6	Generate post load report if step 5 is validated	SyWay I2M Data Team

Load Phase and Dependencies

Configuration

Item #	Configuration Item
1	Override Default Global Settings (Master Switches 0002 Switched off - Portfolio & Bucket will have manual ID)
2	Define Currency Units
3	Define Period Types
4	Define Capacity Units
5	Configure Fields for Mass Import

Conversion Objects

Object #	Preceding Object Conversion Approach
1021	Portfolio
1073	Profit Centre

Error Handling

Error Type	Error Description	Action Taken
Invalid Data	Invalid Portfolio	Validate DCT default content
Invalid Data	Invalid Bucket ID (Parent ID does not exist)	Correct upload data
Invalid Data	Bucket ID already exists (Bucket appears in list 2)	Correct upload data

Post-Load Validation

Project Team

Completeness

Task	Action
Verify Count	SyWay I2M Data Team to verify the record count created in target S/4 HANA by accessing post load reports or standard reports from S/4 HANA.
Verify Logs	Check if there is data that failed to load and perform the necessary actions (e.g. register as post load issue or attempt to load the record again, etc.).

Accuracy

Task	Action
Conversion Accuracy	Verify that the Bucket Hierarchy in target S/4 HANA were loaded correctly via Standard Portfolio Bucket display and table /RV_BUCKET_DB

Business

Completeness

Task	Action
Verify Count	Extract structure from Bucket dashboard in S/4 Hana


Accuracy

Task	Action
Verify Bucket Structure	Extract structure from Bucket dashboard in S/4 Hana

Key Assumptions

- Master Data Standard is up to date as on the date of documenting this conversion approach and data load.
- The Portfolio Bucket Hierarchy is in scope based on data design and any exception requested by business.

Authorization approach for the Portfolio Bucket Hierarchy is to be updated once finalized.

 PDM-631 - Jira project doesn't exist or you don't have permission to view it.

See also

Change log

Version	Published	Changed By	Comment
CURRENT (v. 30)	Jan 21, 2026 09:01	KOHN-ext, Jacob	
v. 29	Jan 20, 2026 16:16	KOHN-ext, Jacob	
v. 28	Jan 20, 2026 16:07	KOHN-ext, Jacob	
v. 27	Nov 27, 2025 14:20	KOHN-ext, Jacob	
v. 26	Nov 20, 2025 10:20	KOHN-ext, Jacob	
v. 25	Nov 14, 2025 13:25	KOHN-ext, Jacob	
v. 24	Nov 14, 2025 13:10	KOHN-ext, Jacob	
v. 23	Nov 14, 2025 09:26	KOHN-ext, Jacob	
v. 22	Nov 13, 2025 12:17	KOHN-ext, Jacob	
v. 21	Oct 09, 2025 08:02	KOHN-ext, Jacob	

[Go to Page History](#)

Workflow history

This view shows the 5 most recent entries. The complete workflow log is available from the 'Document Activity' menu item.

From Nov 13, 2025 to Jan 21, 2026	Actor	Type	Activity	Version
Approved	 KOHN-ext, Jacob	Edit	updated the page at 12:17 pm	
Nov 03, 2025				
	 MUTHUSAMY-ext, Kunalan	State	changed state to Approved at 10:19 am (State override) <i>[PMO Comments] Conversion Spec completed as per CS register and functional review completed</i>	v21
Tech Review	 MUTHUSAMY-ext, Kunalan	State	gave <i>Minor change</i> approval at 10:19 am <i>[PMO Comments] Conversion Spec completed as per CS register and functional review completed</i>	
Oct 09, 2025				
	 KOHN-ext, Jacob	Edit	updated the page at 8:00 am	
Sept 29, 2025				

RUTHERFOR
D-ext, Andrew

State changed expiry date to '04 Oct, 2025 01:23 pm' at 1:23 pm

State changed state to [Tech Review](#) at 1:23 pm

v19

Requested by Parvati to send this back to tech review.
