

I identify the relevant transactions while handling BFC interfaces

Tasks to be completed when documenting an operation (from creation to publication)

1. Enter the **Title of the operation / page**

2. Add the following Labels:

- Scope of applicability: ww, country_accounting
- Country or group of countries (if applicable): belux, china, france, italy, lam, nam,uk_ie, bulgaria, dach, netherlands, iberia, poland, latvia, australia, india, japan, south_korea, thailand, singapore, new_zealand, emea_transversal, apac_transversal
- Unit and Domain according to the [List of labels to be used in the Finance Service Line space](#)
 - E.g. 1: WW Operation in Financial Accounting under domain "Central Finance Processes & Compliance":
 - Labels to be used: **ww, financial_accounting, central_fin_proc_compliance**
 - E.g. 2: France Operation in Financial Accounting:
 - Labels to be used: **country_accounting, france, financial_accounting**
(for country operations, the Domain is always country_accounting)

3. Fill in all fields as described above

4. Name the title of each section using OPD methodology naming convention - **Infinitive verb without the "to", mainly action verb...something) -" I do something..."**

5. Once the description of the operation is completed, ensure it is approved and published by launching the [SBS-Finance approval workflow](#)

Domain: SU Financial Accounting / Central Finance Processes & Compliance

Responsibility area: Ensure figures reporting

Table of contents

- [Tasks to be completed when documenting an operation \(from creation to publication\)](#)
- [1. Enter the Title of the operation / page](#)
- [2. Add the following Labels:](#)
 - [Scope of applicability: ww, country_accounting](#)
 - [Country or group of countries \(if applicable\): belux, china, france, italy, lam, nam,uk_ie, bulgaria, dach, netherlands, iberia, poland, latvia, australia, india, japan, south_korea, thailand, singapore, new_zealand, emea_transversal, apac_transversal](#)
 - [Unit and Domain according to the List of labels to be used in the Finance Service Line space](#)
- [3. Fill in all fields as described above](#)
- [4. Name the title of each section using OPD methodology naming convention - Infinitive verb without the "to", mainly action verb...something\) -" I do something..."](#)
- [5. Once the description of the operation is completed, ensure it is approved and published by launching the SBS-Finance approval workflow](#)
- [Table of contents](#)
- [1. Objective and Scope](#)
 - [1.1. Objective of this Operation](#)
 - [1.2. Scope](#)
- [2. Definitions](#)
- [3. Task description](#)
- [3.1 I identify the relevant transactions while handling BFC interfaces](#)

Scope



ERP



Frequency



References

ZZF_BFC_COLLECTIVE
ZZF_BFC_CONVERSION
ZZF_BFC_TRANSFER
ZZF_BFC_LIST
ZZF_BFC_FI_FLOW_AN
ZZF_BFC_FI_FLOW_VA
ZZF_GL_BFC_OVERVIEW
ZZF_BFC_BS_AA_LIST
ZZF_BFC_CUSTOMIZING

Forms

Attachments

I identify the SAP reports and matching information in BFC Interface << I identify the relevant transactions while handling BFC interfaces >> I identify the differences between the BFC interfaces from PF2/PI2 and WP2 systems

1. Objective and Scope

1.1. Objective of this Operation

The goal of this operation is to have all the necessary configurations in the BFC related tables and sets correctly updated, in order to have the SAP /BFC interface working properly.

1.2. Scope

The scope of this operation is a worldwide scope, for all Entities using PF2, PI2 and WP2 systems and accounting systems.

2. Definitions

See [Finance Glossary](#)

3. Task description

3.1 I identify the relevant transactions while handling BFC interfaces

From the user's point of view:

ZZF_BFC_COLLECTIVE – To extract data from SAP into the tables

ZZF_BFC_COLLECTIVE – To extract data from SAP into the tables

Here you can find the **origin** of the information:

Y - A/P line items;

X - A/R line items;

B - GL Balance;

V - GL line item;

W - GL line items special flows;

M - GL balance assets w/o AA

N - GL item assets w/o AA

T - AA Assets

A - AA shares

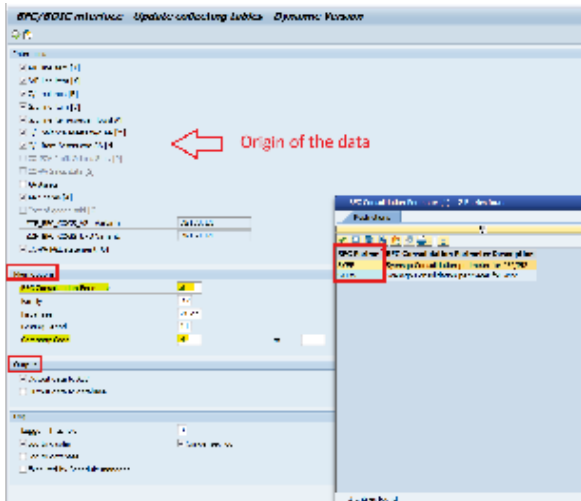
O - COPA P&L statement (in PF2 case)

Main options (depending on the need on perimeter, family fiscal year, month and company code)

Output

Output data to ALV - just to be visualized; WITHOUT uploading the results in table "ZZF_BFC_XXXX"

Output data to database - to have the outcome integrated in the database - upload the data directly to table "ZZF_BFC_XXXX".



ZZF_BFC_CONVERSION – to control origin extraction, convert data to value and format for BFC tool and post rounding differences;

ZZF_BFC_CONVERSION – to control origin extraction, convert data to value and format for BFC tool and post rounding differences;

Main options

The same options should be used as in ZZF_BFC_COLLECTIVE

Options

Step 1 - Control

Step 2 - Conversions (selected automatically)

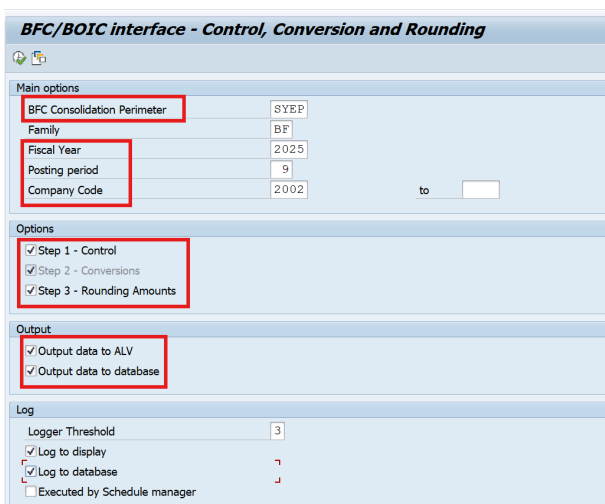
Step 3 - Rounding amounts

Every time ZZF_BFC_COLLECTIVE is run, this transaction must be run too. ZZF_BFC_CONVERSION must be run after ZZF_BFC_COLLECTIVE and before ZZF_BFC_TRANSFER.

Additionally, inside the transaction you will be able to display the columns that were converted:

Green = Data transformed;

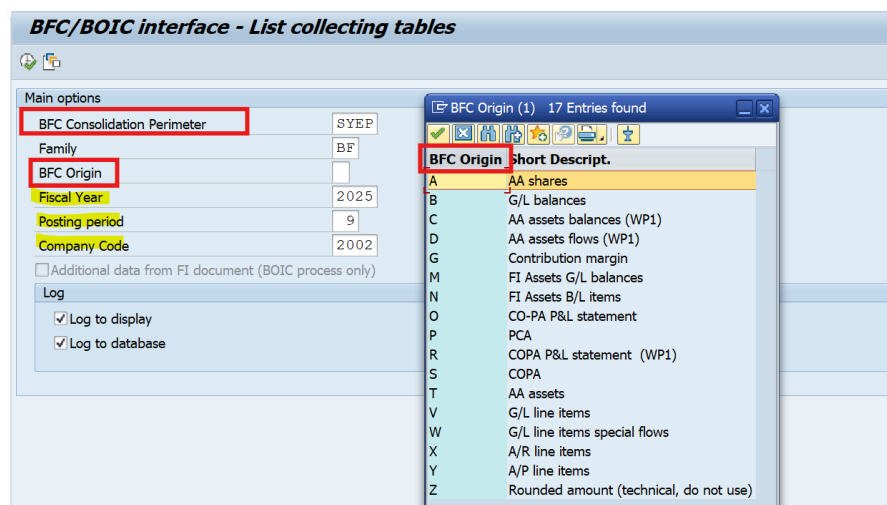
Also the conversion time is displayed.



ZZF_BFC_LIST – To display all data currently in the tables

You can select the origin you need. To ease the search in case of need, here are some guidelines on how to find the figures through SAP transactions:

- Y - A/P line items; - FBL1N (and FBL3N for BS manual accounts)
- X - A/R line items; - FBL5N (and FBL3N for BS manual accounts)
- B - GL Balance - FS10N
- C - AA assets balances (WP2) - executed via transaction AA BFC program
- D - AA assets flows (WP2) - - executed via transaction AA BFC program
- R - COPA P&L statement (WP2) - executed via transaction COPA BFC program
- V - GL line item; FBL3N
- W - GL line items special flows; FBL3N
- M - GL balance assets w/o AA FBL3N
- N - GL item assets w/o AA FBL3N
- T - AA Assets FBL3N
- A - AA shares AR02
- O - COPA P&L statement (in PF2 case) . KE30 or KE24
- P - PCA - origin P is no longer used (confirmed)



ZZF_BFC_TRANSFER – To generate the file to be uploaded into BFC

ZZF_BFC_TRANSFER – To generate the file to be uploaded into BFC

This transaction is used to generate a ".CSV" file with the data previously extracted, to be uploaded into BFC interface.

You can make Multi-Company transfers by selecting "several companies in one file" and also restrict the headings.

The document will be generated with extension ".CSV".

Therefore, in case you want to edit this file, you should do it with ".txt" format.

BFC/BOIC interface - File Transfer/List

Main options

BFC Consolidation Perimeter: SYEP
 Family: BF
 Fiscal Year: 2025
 Posting period: 9
 Company Code: 2002 to []
 Heading: [] to []
 BOIC Partner: [] to []

Output

Output data to ALV
 Output data to file(s)
 PC destination folder
 Destination folder: []
 SAP destination folder
 Destination folder: /exploit/Targetik/Data
 Several companies in one file
 Change company in file name by: BEPFI

Log

Log to display
 Log to database

From the BFC interfaces specialist's point of view:

ZZF_BFC_FI_FLOW_AN- Flow Analysis

This transaction retrieves the GL account assignment to the BFC heading and the flows throughout the Fiscal Year.

It is used for Provisions and, due to that, the scheme to be selected should consider the flows and the origin: **SA0F**, origin V or W.

If there are documents posted without the mandatory transaction type, the sum of the amount will be available in column FLOW_CONTR (flow control).

BFC flow analysis

Transaction types by flow

CoCode	Currency	Heading	Set of accounts	Account	F00	F10 (FLOW)	F15 (VARIA)	F20 (INCR)	F25 (ALLOW)	F30 (DECR)	F31 (SHORT)	F32 (PV-TR)	F35 (PROV)	F36 (DISCT)	F60 (OTHER)	F99 (CLOSING PERIOD)	FLOW_CONTROL	DT_AMOUNT	DT_DEFAULT	CT_AMOUNT	CT_DEFAULT	ACCT_2_SET	
					- 9.661.901.573,14	0,00	6.168.865,88	- 200.248,91	- 352.056,98	804.419,94	0,00	614.028,63	1.218.916,66	15.612,64	14.040.855,80	- 10.024.942.912,85	384.092.450,83	- 159.392.832,27					
2002	EUR	A41100	ZFC-A41100-ORD-LI	2220100000	714.088,61	0,00	714.088,61	0,00	0,00	0,00	0,00	0,00	0,00	0,00	0,00	0,00	0,00	0,00	0,00	0,00	714.088,61	F15	NO
2002	EUR	A41100	ZFC-A41100-ORD-LI	2200000098	5.322,40	0,00	5.322,40	0,00	0,00	0,00	0,00	0,00	0,00	0,00	0,00	0,00	0,00	27.570,17	F15	22.247,77	F15	NO	NO
2002	EUR	A41100	ZFC-A41100-ORD-LI	2251000000	0,00	0,00	26.737,91	0,00	0,00	0,00	0,00	0,00	0,00	0,00	0,00	0,00	0,00	26.737,91		0,00	375.300,74	F15	NO

ZZF_BFC_FI_FLOW_VA - BFC Flow Variances

This transaction retrieves the GL account assignment to the set of accounts and the flows variations throughout the requested period. For the flows, you may select the transaction type or the assignment (mainly for Germany).

BFC flows variations

Data Selection

Year of flow F00: 2025
 Period of flow F00: 1
 Year of flow F99: 2025
 Period of flow F99: 1
 Company Code: 2002 to []
 Set of Accounts: [] to []

Flow from Transaction Type
 Flow from Assignment

ALV list at Account level
 ALV list at Business area level

Additional selection
 Flows of ALV List: [] to []

Log Options
 Log to Display
 Log to Database
 Condensed Log

BFC flow variances

Transaction types by flow

CoCode	Currency	SetAccount	Account	Name	Bus. Area	Bus.area	F00(2025/01)	F35 (PROVI)	F99(2025/01)	FLOW_VARIA	FLOW_CONTR	ACCT_2_SET
EUR							17.548.440,93-	779.097,18	16.769.343,75-	779.097,18		0,00
2002	EUR	ZFC-L45800	4004100000	Provision for restructuring costs			17.548.440,93-	779.097,18	16.769.343,75-	779.097,18		0,00 NO

ZZF_GL_BFC_OVERVIEW - GL/BFC Headings Assig

This transaction retrieves the GL account assignment to the BFC heading and the opposite, as well as other relevant info:

- Set name;
- PL or BS account;
- Personnel costs (statistical headings);
- Text in EN and additional language;
- COCA deletion, blockage;

GL/BFC Headings Assign. Overview

Account selection

Company code: 2002 Display Accounts not yet created for company code
 Additional language: FR

G/L Account to []
 G/L Account Set to []

Display ARA related data
 Account Item: [] to []

Output options
 Export XLS file

You can also check the GL accounts created at company code level, as well as display accounts that haven't been replicated yet.

The green lines mean that the GL account is created at company code level.

GL/BFC Headings Assign. Overview

G/L Account	GL Long Text(EN)	CoCode	Name	Set Name	Heading	Description	P&L or BS	CoA Del	CoA block	CC Del	CC block	Acct Group	Cost elem.	P/M Per.	Costs	S.Text(EN)	S.Text(FR)	GL Long Text (FR)	BFC Txt	Details
4004100000	Provision for restructuring costs	2002	SYENSQO SA ZFC-L45800	L45800	ST	provisions for restructuring	BS					BILA	BAL			Prov restr costs	Prov fr restr	Provision pour frais de restructuration		
4004100000	Provision for restructuring costs	2002	SYENSQO SA ZFC-X0810	X0810	Restruct.	Employee expenses	ST LT	BS				BILA	X0810			Prov restr costs	Prov fr restr	Provision pour frais de restructuration		

ZZF_BFC_CUSTOMIZING

This transaction is like a cockpit for the BFC Interfaces. It is defined

into two big clusters of Maintenance:

1st cluster: **Main** - it is related to tables that are used in the Interface process; these tables are also used for other purposes;

2nd cluster: **BFC Main** - it is related to the maintenance of the BFC specific tables like the perimeter, flows, sites, divisions, regions by country, profit centers and markets;

In the 2nd cluster, there is also a split between what is

- BFC process itself;
- BFC families
- Conversion

The ZZF_BFC_CUSTOMIZING is common to PF2 and WP2 systems.

Display View "Main : Company code mapping (ZZR_T001_MAP)": Overview

Dialog Structure	Main : Company code mapping (ZZR_T001_MAP)				
	PRS CoCode	PRS Company Code Name	Landscape	SCCd	Source Company Code Name
• Main : Company code mapping (ZZR_T001_MAP)	0192	SOLVAY INTEROX (AU) *D*	ERPRCS	0192	ZZZZ ex SOLVAY INTEROX (A
• Main : BFC Company codes (ZZF_BFC_COMPANIE)	0197	SOC ARCHIVAGE MOD *D*	ERPRCS	0197	ZZZZ ex SAM Société d'Arc
• Main : Consolidation methods (ZZF_CONSO_METHOD)	0560	BUTACHIMIE *D*	ERPRCS	ZFR9	ZZZZ ex BUTACHIMIE
• Main : Companies param. (part of ZZR_T001_MGT)	0849	CIM - CIE IND & MIN *D*	ERPRCS	0849	ZZZZ ex CIE INDUSTRIELLE
• Main : Report.: Div. - Except (ZZR_REPO_DIV_EXC)	1044	COGENERA CHALAMPE *D*	ERPRCS	1044	ZZZZ ex COGENERA CHALAMPE
• BFC - Main : Consolidation perimeter (CONS_PER)	1688	GEPEIF	ERPRCS	1688	GEPEIF
• BFC : Partners by Consolid perimeter (CONS_MGT)	1892	GIE CHIMIE SALINDRES *D*	ERPRCS	1892	ZZZZ ex GIE CHIMIE SALIND
• BFC - Main : Flows (FLOW)	1900	GIE OSIRIS *D*	ERPRCS	1900	ZZZZ ex GIE OSIRIS
• BFC - Main : Sites (SITE)	1990	HEXAGAS *D*	ERPRCS	1990	ZZZZ ex Hexagas
• BFC - Main : Det. Divis. partner (DIVPART)	2955	ORBEO *D*	ERPRCS	2955	ZZZZ ex Orbeo SAS
• BFC - Main : Region by country (COUNTRY)	3865	SOLVAY ENERGY S FR *D*	ERPRCS	3865	ZZZZ ex SOLVAY ENERGY S F
• BFC - Main : Valid profit centers (PCEN_RUL)	3899	DAEHAN *D*	ERPRCS	3899	ZZZZ ex DAEHAN
• BFC - Main : Market (D_MARK)	3919	SYENSQO PARTICIP. FR	ERPRCS	3919	SYENSQO PARTICIP. FR
• BFC - Process (PROCESS)	3944	SYENSQO ENERGY GHG	ERPRCS	3944	SYENSQO ENERGY GHG
• AA - Assets specifications (AA)	3972	SYENSQO FINANCE (FR)	ERPRCS	3972	SYENSQO FINANCE (FR)
• AA - Assets specific transactions (AA_TTY)	3976	RHODIA FINANCE *D*	ERPRCS	3976	ZZZZ ex Rhodia Finance
• Calculated headings / flows (CALCUL)	4003	RHOD V *D*	ERPRCS	4003	ZZZZ ex Rhodia V
• Flow by transaction type (TRA_FLOW)	4004	RHOD W *D*	ERPRCS	4004	ZZZZ ex Rhodia W
• Control (CONTROL)	4274	RHODIA OPERATIONS *D*	ERPRCS	ZFR3	ZZZZ ex RHODIA OPERATIONS
• BFC - Families (FAMILY)	5586	RHODIA CHIMIE *D*	ERPRCS	5586	ZZZZ ex RHODIA CHIMIE
• Dimensions by scheme (SCH_DIM)	6103	SOLVAY FINANCIAL S *D*	ERPRCS	6031	ZZZZ ex SOLVAY F. SERV
• Headings (HEADING)	6104	SYENSQO HOLDING (US)	ERPRCS	6032	SYENSQO HOLDING (US)
• Set of accounts by heading (SETACCT)	6107	SYENSQO SPECIALIT RE	ERPRCS	6059	SYENSQO SPECIALITIES IND
• Rounding Amounts (ROUNDING)	6108	SYENSQO ASIA PACIFIC	ERPRCS	6062	SYENSQO ASIA PACIFIC Pte
• BFC - Conversion : Division conversion (DIV_CONV)	6109	SYENSQO (BANGPOO) SC	ERPRCS	6066	SYENSQO (BANGPOO) S CHEM
• BFC - Conversion : Bank conversion (BANK_CONV)	6112	ALAVER *D*	ERPRCS		
	6114	SOLVAY SP CHEM JAPAN *D*	ERPRCS	6110	ZZZZ ex SOLVAY SP CHEM JA

Display View "Main : Company code mapping



Dialog Structure

- * Main : Company code mapping (ZZR_T001_MAP)
- * Main : BFC Company codes (ZZF_BFC_COMPANIE)
- * Main : Consolidation methods (ZZF_CONSO_METHOD)
- * Main : Companies param. (part of ZZF_T001_MGT)
- * Main : Report.: Div. - Except (ZZR_REPO_DIV_EXC)
- * BFC - Main : Consolidation perimeter (CONS_PER)
- * BFC : Partners by Consolid perimeter (CONS_MGT)
- * BFC - Main : Flows (FLOW)
- * BFC - Main : Sites (SITE)
- * BFC - Main : Det. Divis. partner (DIVPART)
- * BFC - Main : Region by country (COUNTRY)
- * BFC - Main : Valid profit centers (PCEN_RUL)
- * BFC - Main: Market (D_MARK)
- ▼ BFC - Process (PROCESS)
 - * AA - Assets specifications (AA)
 - * AA - Assets specific transactions (AA_TTY)
 - * Calculated headings / flows (CALCUL)
 - * Flow by transaction type (TRA_FLOW)
 - * Control (CONTROL)
- ▼ BFC - Families (FAMILY)
 - * Dimensions by scheme (SCH_DIM)
 - * Headings (HEADING)
 - * Set of accounts by heading (SETACCT)
 - * Rounding Amounts (ROUNDING)
- * BFC - Conversion : Division conversion (DIV_CONV)
- * BFC - Conversion : Bank conversion (BANK_CONV)